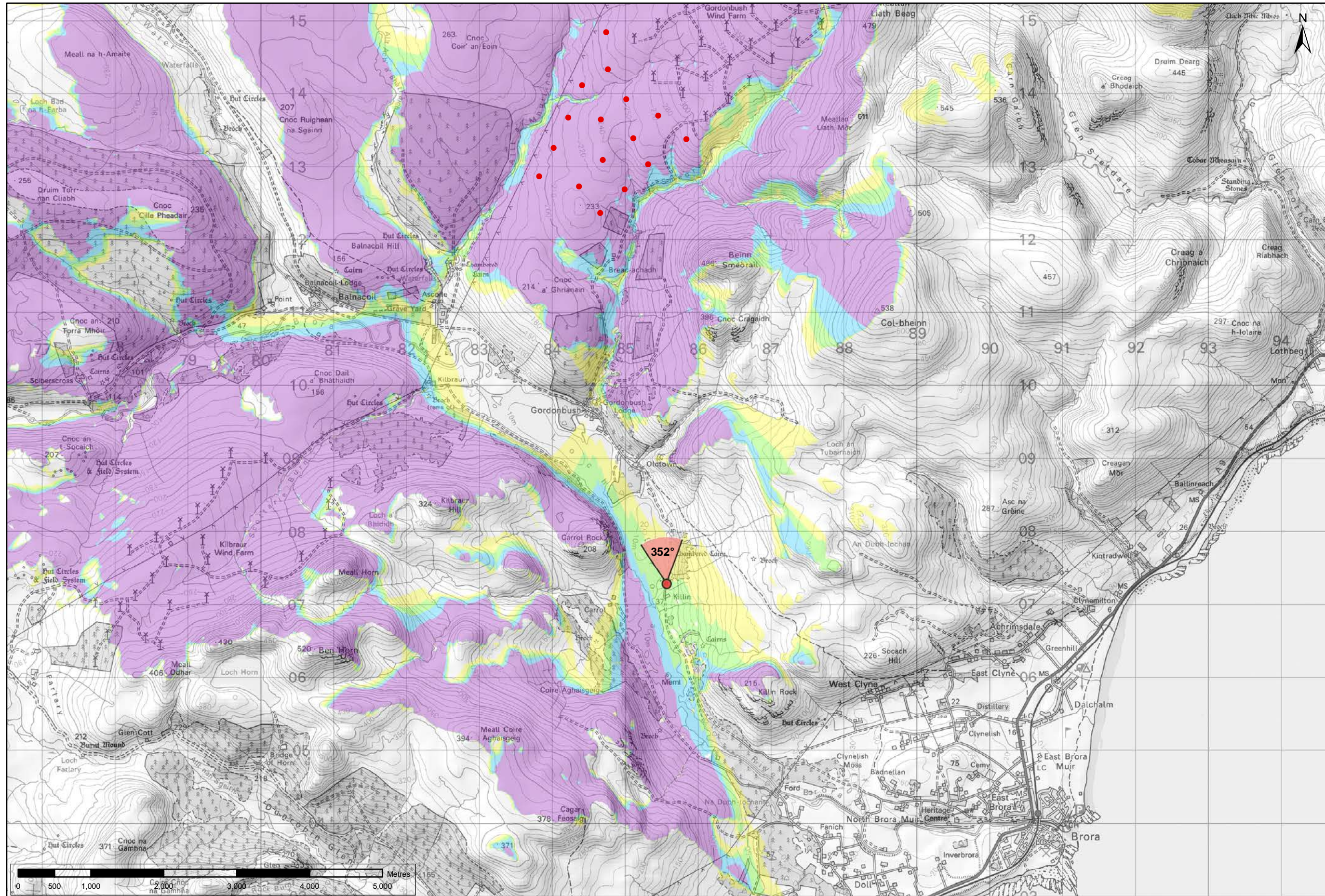





Viewpoint Location Plan Baseline Panorama  
Scale: 1:150,000



Viewpoint Location Plan  
Scale: 1:50,000 (Blade Tip ZTV)

**Note:**  
1. ZTV: Created using ESRI ArcGIS 10.2.2 software using the following data and parameters:  
Blade tip height: 115/130m  
DTM Data: OS Terrain 5. Resampled to a 10m grid.  
Observer height: 1.5m  
No surface features, such as buildings or trees, were included in the analysis.  
Earth curvature and light refraction has been included in calculations.  
2. © Crown copyright and database rights 2015 Ordnance Survey 10034870.



optimised environments

**Key**

- Gordonbush Extension Turbine
- ◀ 90 degree field of view viewpoint
- ◀ 53.5 degree field of view viewpoint

Wind Farm Status (1:150,000 only):

- Turbine Locations
- Gordonbush Extension Site Boundary
- Operational
- Consented
- Application
- Scoping

Gordonbush Extension Blade Tip ZTV  
No. of turbines that are theoretically visible

	1 - 4
	5 - 8
	9 - 12
	13 - 16

**Figure: 7.20a**  
**SNH VIEWPOINT 4: BRORA TO ROGART**  
**MINOR ROAD NORTH OF KILLIN**

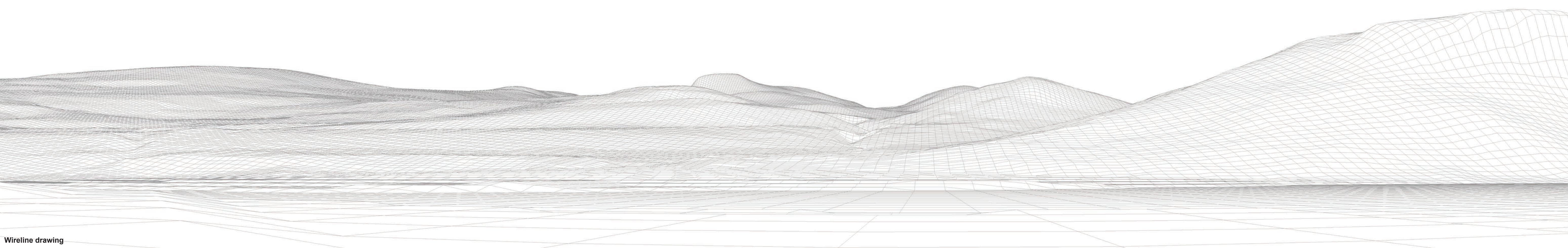
**Gordonbush Extension Wind Farm**  
**Environmental Statement**





Baseline photograph

This image provides landscape and visual context only

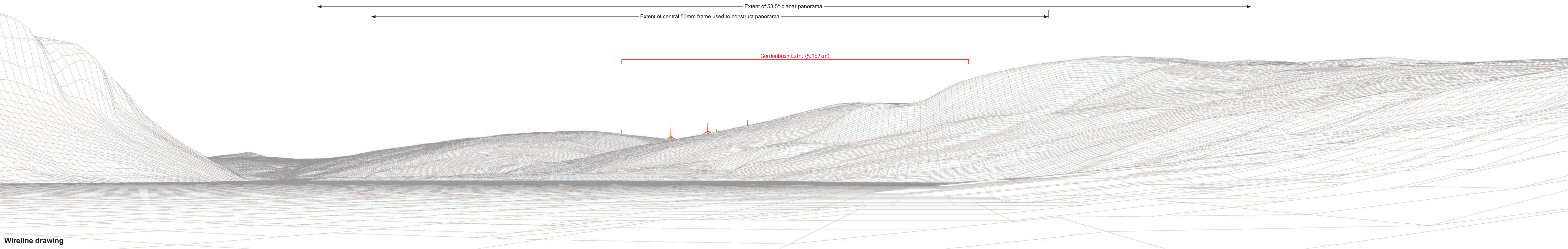


Wireline drawing

OS reference:	285565 E 907283 N	Horizontal field of view:	90° (cylindrical projection)	Camera:	Canon EOS 5D Mk2
Eye level:	31.5 m AOD	Principal distance	522 mm	Lens:	50mm (Canon EF 50mm f/1.4)
Direction of view:	262°			Camera height:	1.5 m AGL
Nearest turbine:	5.167 km			Date and time:	23/07/2014 12:32

Figure: 7.20b(i)  
SNH Viewpoint 4: Brora to Rogart minor road north of Killin

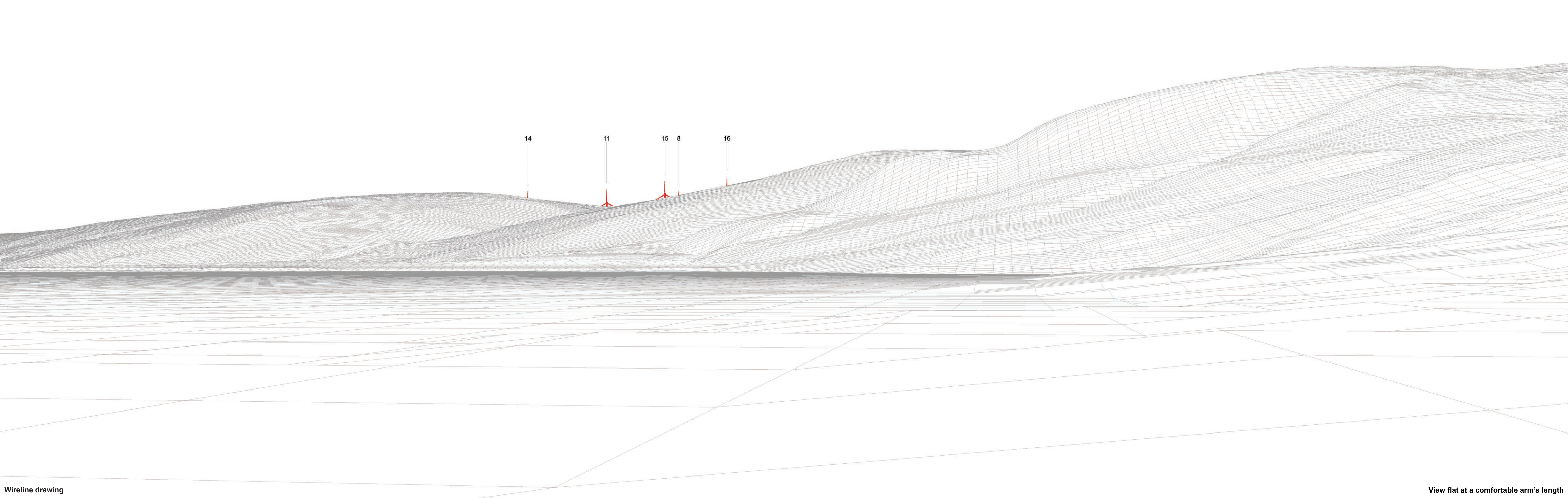




<b>OS reference:</b>	285565 E 907283 N	<b>Horizontal field of view:</b>	90° (cylindrical projection)	<b>Camera:</b>	Canon EOS 5D Mk2
<b>Eye level:</b>	31.5 m AOD	<b>Principal distance</b>	522 mm	<b>Lens:</b>	50mm (Canon EF 50mm f/1.4)
<b>Direction of view:</b>	352°			<b>Camera height:</b>	1.5 m AGL
<b>Nearest turbine:</b>	5.167 km			<b>Date and time:</b>	23/07/2014 12:32

**Figure: 7.20b(ii)**  
**SNH Viewpoint 4: Brora to Rogart minor road north of Killin**





Wireline drawing

View flat at a comfortable arm's length





Photomontage

View flat at a comfortable arm's length

OS reference:	285565 E 907283 N	Horizontal field of view:	53.5° (planar projection)	Camera:	Canon EOS 5D Mk2
Eye level:	31.5 m AOD	Principal distance	812.5 mm	Lens:	50mm (Canon EF 50mm f/1.4)
Direction of view:	352°	Paper size:	841 x 297 mm (half A1)	Camera height:	1.5 m AGL
Nearest turbine:	5.167 km	Correct printed image size:	820 x 260 mm	Date and time:	23/07/2014 12:32

Figure: 7.20d  
SNH Viewpoint 4: Brora to Rogart minor road north of Killin