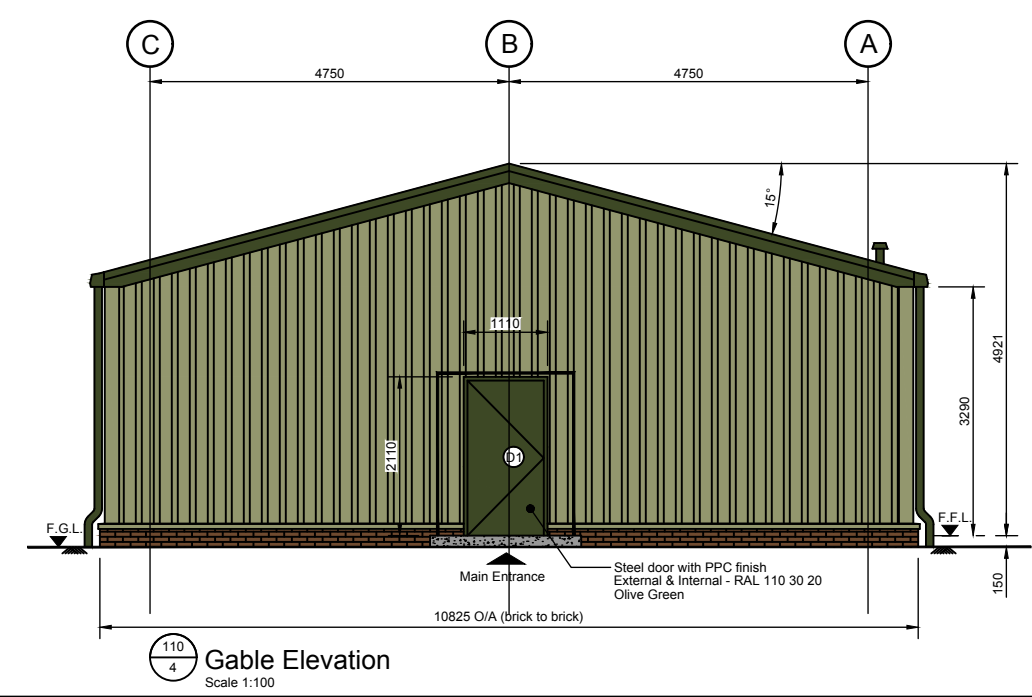
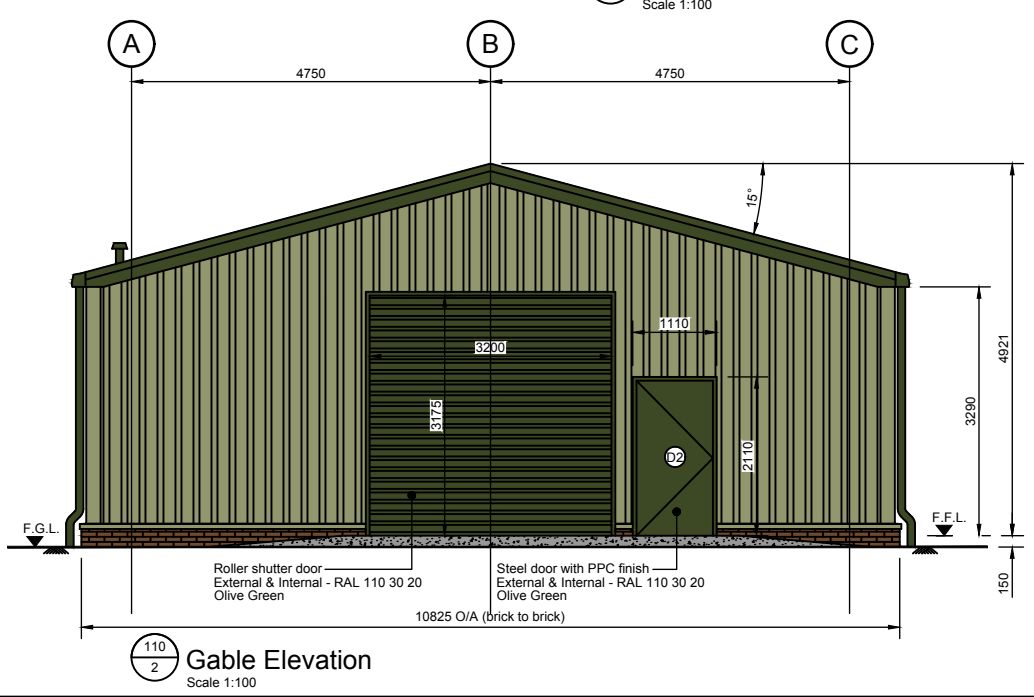
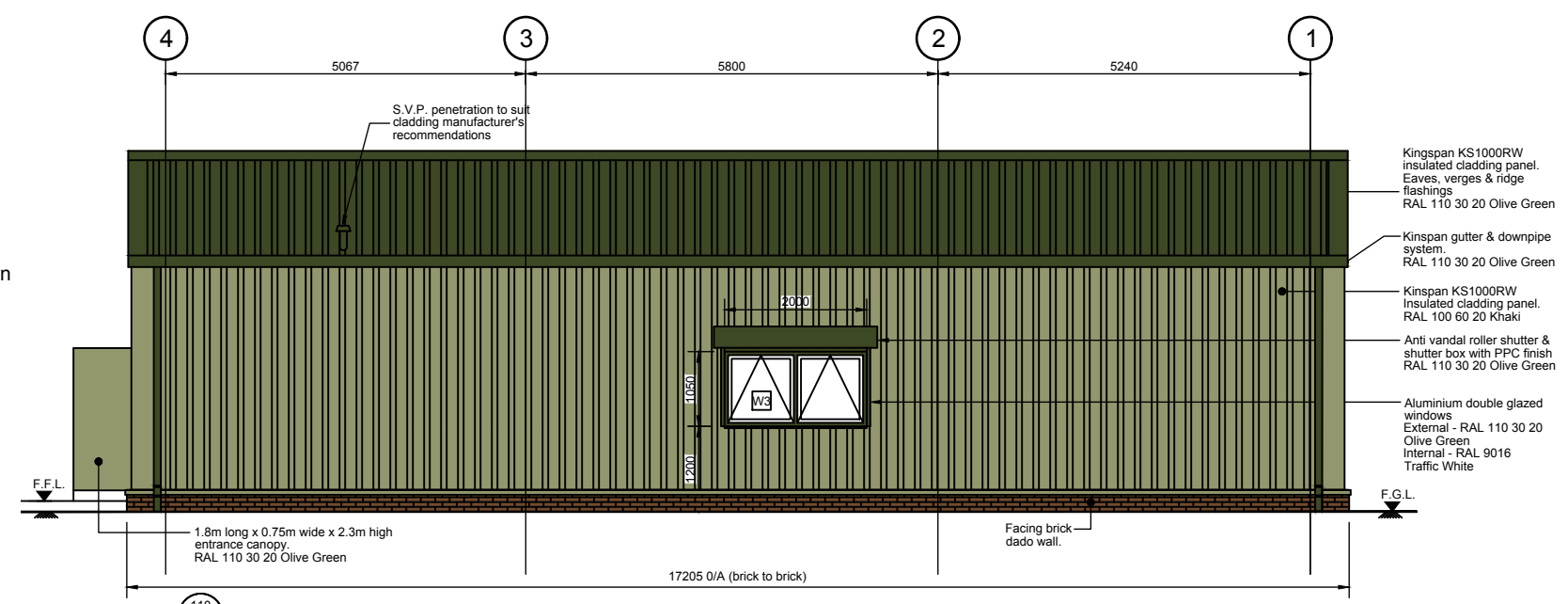
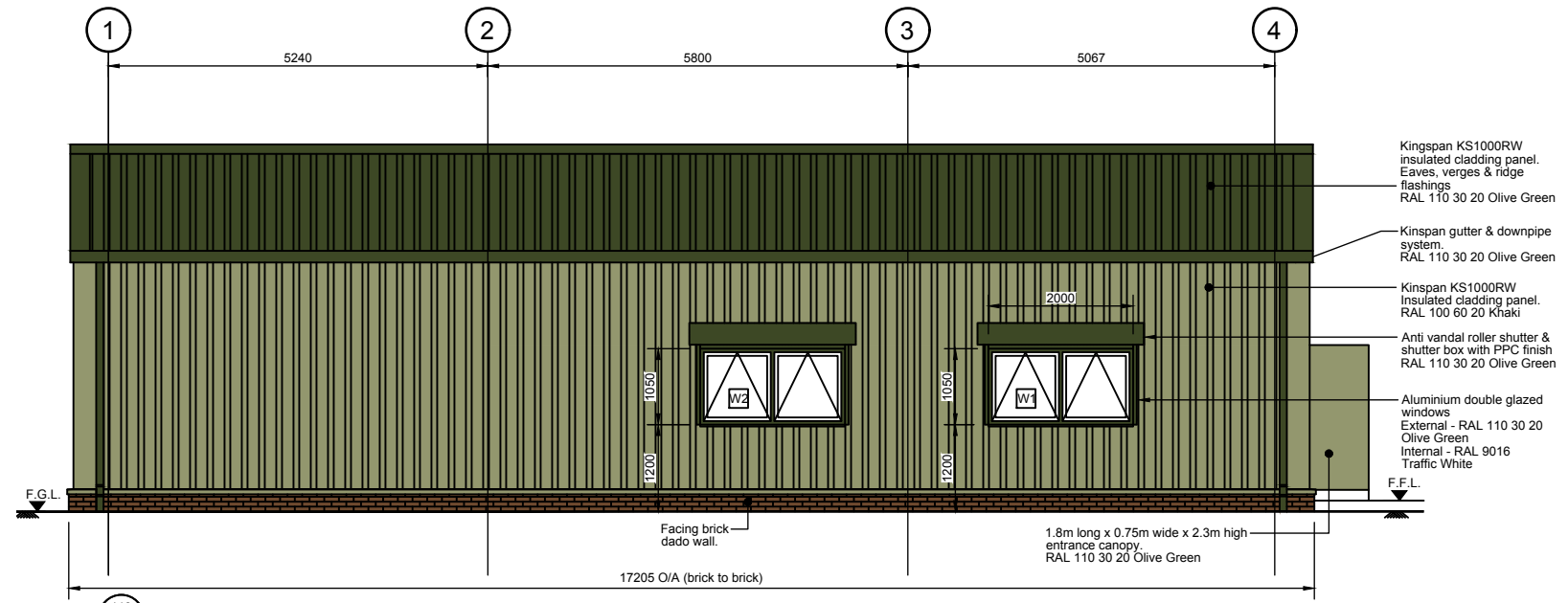


White RAL 9003	Grey White RAL 9002	Goosewing Grey RAL 080 70 05
Gull Grey RAL 240 80 05	Merlin Grey RAL 180 40 05	Anthracite RAL 7016
Olive Green RAL 110 30 20	Juniper Green RAL 160 20 10	Van Dyke Brown RAL 8014



- Notes**
1. All dimensions are in millimetres and all levels in metres AOD unless shown otherwise.
 2. Kingspan standard range of cladding colours shown below for information purposes.

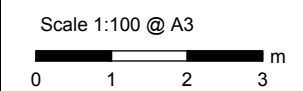


Figure 5.10b
Indicative Operations Building
External Elevations

Tangy IV Wind Farm
EIA Report