

Key

- Site Boundary
- Turbine
- Viewpoint (VP)
- 40km Wider Study Area
- 20km Detailed Study Area
- 5km Distance Radii
- Cairngorms National Park Boundary (CNP)

Zone of Theoretical Visibility (ZTV):
Number of Turbines Theoretically Visible

- 1 - 9
- 10 - 18
- 19 - 27
- 28 - 36

- Viewpoint Locations**
- VP1. Beinn a' Mheadhoin (Glen Affric)
 - VP2. Great Glen Way, Balbeg
 - VP3. Meall Fuar-mhonaidh
 - VP4. Carn na Saobhaidhe
 - VP5. Carn Dubh
 - VP6. Glen Markie
 - VP7. Carn a' Chuilinn
 - VP8. Carn Dearg (Monadhliath)
 - VP9. Geal Charn (Monadhliath)
 - VP10. Braeriach
 - VP11. Carn Liath
 - VP12. Glen Shirra
 - VP13. Geal Charn (Ardverkie)
 - VP14. A87, Loch Garry Viewpoint
 - VP15. Beinn Teallach
 - VP16. Footpath East of Loch Spey
 - VP17. Carn Dearg (Glen Roy)
 - VP18. Loch na Lairige
 - VP19. Carn na Caim
 - VP20. Urquhart Castle

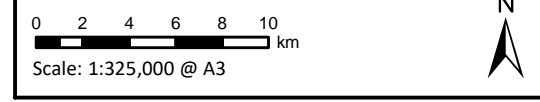


Figure 7.5.1
Viewpoints

Cloiche Wind Farm
EIA Report