

NVC dominant habitats

- H10a - Dry dwarf shrub heath
- H12a - Dry heath/acid grassland
- M15b - Wet dwarf shrub heath
- M15c - Wet dwarf shrub heath
- M17 - Wet modified bog
- M17a - Blanket sphagnum bog
- M18a - Blanket Sphagnum bog
- M18b - Blanket Sphagnum bog
- M25 - Marsh/marshy grassland
- M6c - Flush and spring - acid/neutral flush
- U20 - Bracken
- U4 - Acid grassland - unimproved
- U4a - Acid grassland - unimproved
- Open water
- Quarry

Key

- Gordonbush Turbines
- Gordonbush Extension Turbines
- Substation
- Existing Gordonbush Wind Farm Track
- Existing Gordonbush Wind Farm Extension Track
- Proposed Cable
- Proposed Green Hydrogen Facility
- Proposed Temporary Construction Compound

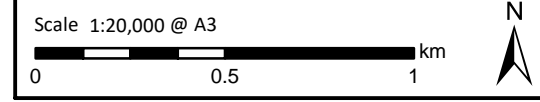
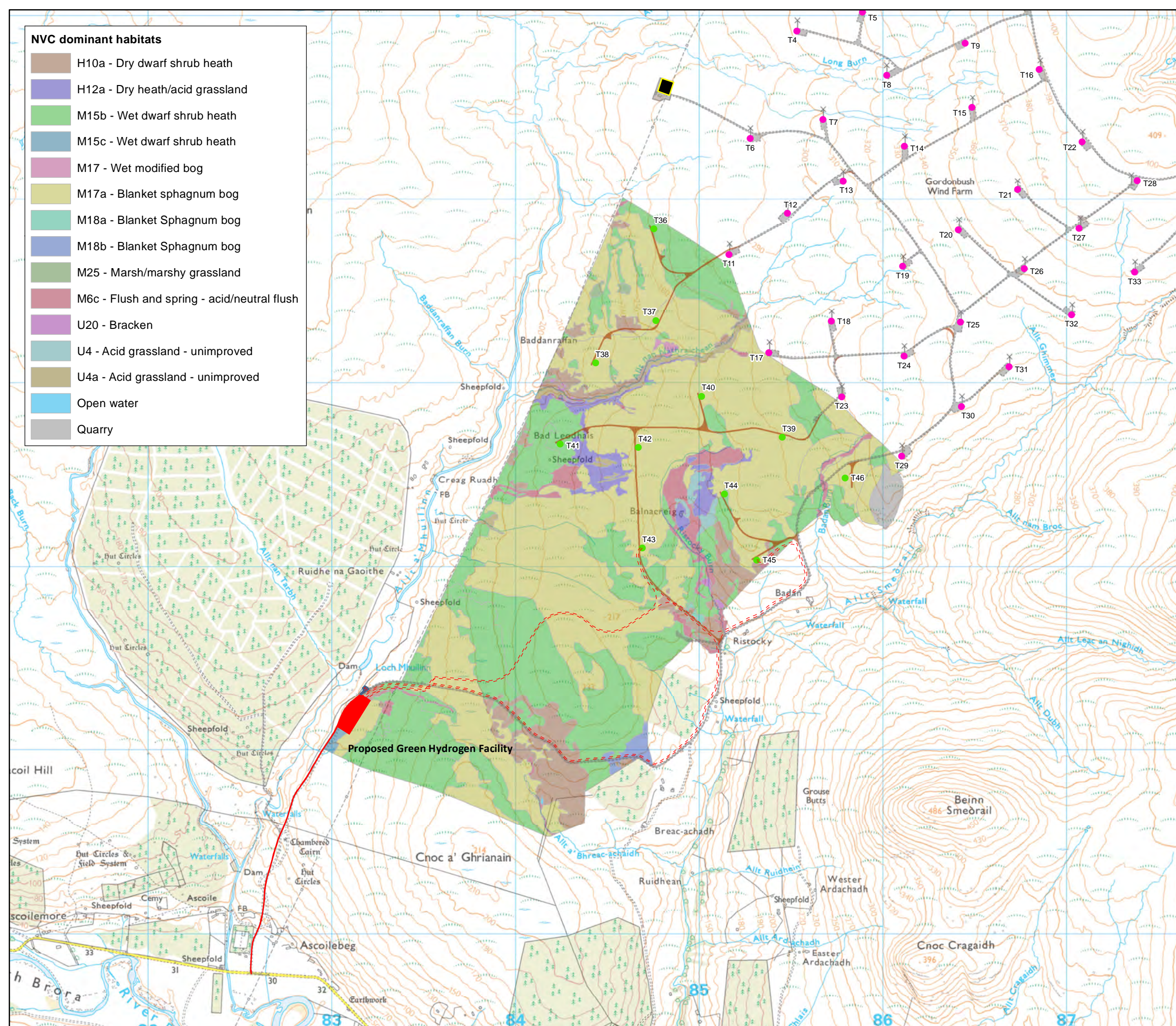


Figure 6
Historical Gordonbush and Gordonbush Extension
Wind Farm NVC Survey Results

**Gordonbush Wind Farm Extension:
Proposed Green Hydrogen Facility**