

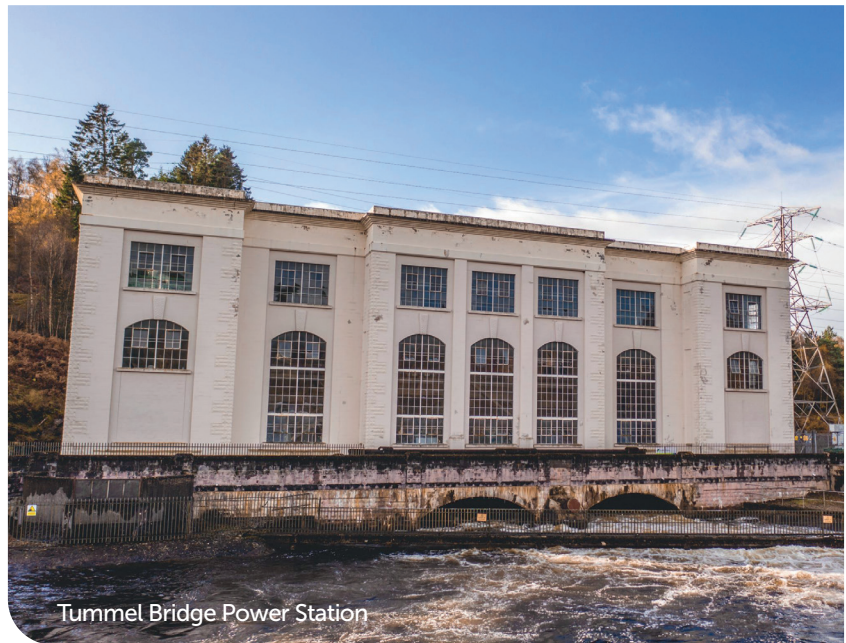
# TUMMEL BRIDGE POWER STATION TO ENTER A NEW ERA

SSE Renewables is repowering the Tummel Bridge Power Station. This £50 million investment will secure local jobs and supply chain opportunities by extending Tummel’s working life, increase its potential power output and support SSE Renewables’ commitment to significantly contribute to government Net Zero targets.

The work will involve replacing the hydro station’s two turbines, which were installed when Tummel Bridge started producing energy in 1933, with modern units. Once completed, Tummel Bridge’s potential output will increase from 34 to 40 megawatts (MW).

SSE Renewables has a rich heritage of hydro development in Scotland. Our hydro portfolio totals 1,459MW, including 300MW of pumped storage and 750MW of flexible hydro. The repowering of Tummel Bridge will extend its working life to at least the year 2050.

The work is expected to begin in early April and take around 18 months to complete. Most activity will be contained within the existing building but there may be some disruption caused by transport movements to and from the site and noise from building works. We appreciate the patience and understanding of local residents and businesses during this time.



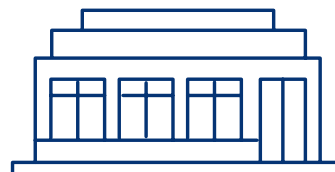
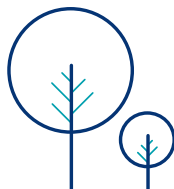
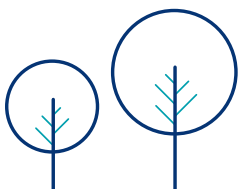
Tummel Bridge Power Station



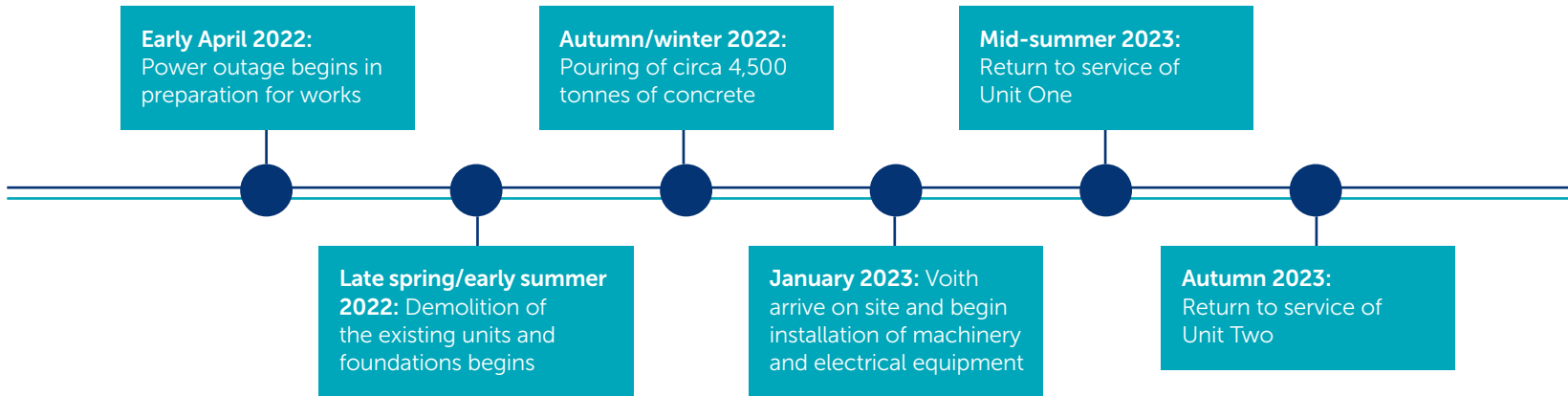
Tummel’s No. 2 “Twin Runner” Horizontal Francis turbine

“Tummel Bridge Station played a pioneering role in Scotland’s quest to harness the power of water to produce for cleaner energy. This iconic structure has played a critical role in providing energy to Scottish homes and businesses since its construction in 1933. This investment will ensure it remains a key asset in our operations for many years to come.”

**Jerry Williamson, Director of Operations for SSE Renewables**



Timeline



FREQUENTLY ASKED QUESTIONS

**Why is this work required?**

SSE Renewables' Tummel Bridge Power Station has operated without any major upgrade work since it opened in 1933. The two turbines at the heart of the station's operations are nearly 90 years old. Replacing the existing machinery and infrastructure is necessary for Tummel Bridge to continue operating for decades to come.

**What are the site operating hours?**

Initially the site will operate 24 hours per day and for six days per week during the demolition period from late April to July 2022, from 0700 hours on Mondays to 1900 hours on Saturdays. Timings after the demolition period will be subject to review. Operating for 24 hours will shorten the length of time required to complete this necessary work.

Deliveries to the site will be scheduled to take place between 0800 hours and 1800 hours, Monday to Friday.

**How can I find out more about the work?**

More details can be found on the Tummel Bridge section of the SSE Renewables website [www.sserenewables.com/hydro/tummel-valley](http://www.sserenewables.com/hydro/tummel-valley)

**Contact details:** Alan Greenwood, Stakeholder Engagement Manager, SSE Renewables  
Email: [alan.greenwood@sse.com](mailto:alan.greenwood@sse.com)

