








Key

-  Site Boundary
-  Turbine
-  45 km Wider Study Area
-  20 km Detailed Study Area
-  5 km Distance Radii

Zone of Theoretical Visibility (ZTV):
Comparative Theoretical Visibility of
Consented Scheme and Proposed
Varied Development

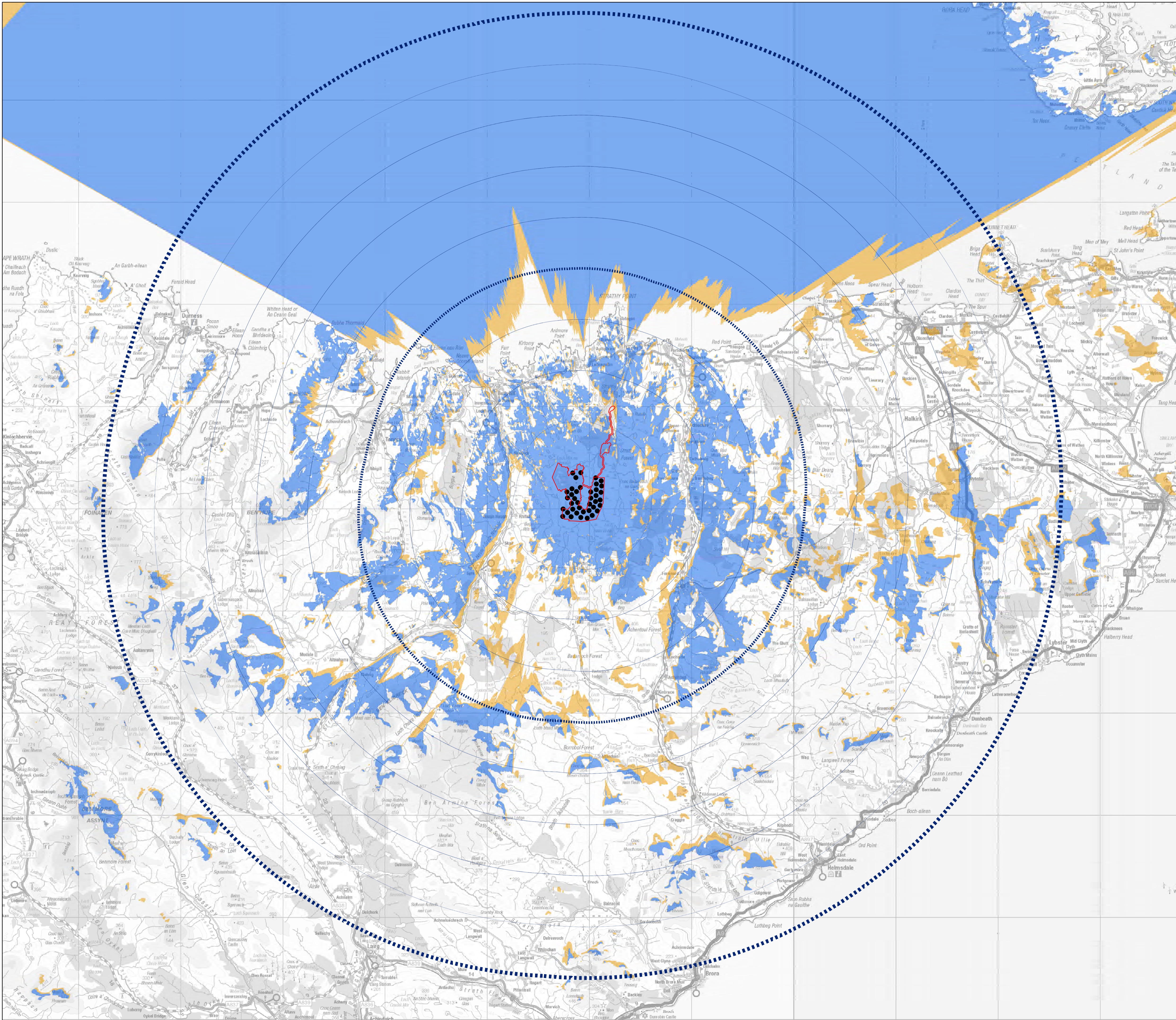
-  Area where Proposed Varied Development would be visible
-  Area where both the Consented Scheme and the Proposed Varied Development would be visible

Scale 1:350,000@ A3



Figure 4.2a
Comparative ZTV of the Consented
Scheme and Proposed Varied Development

Strathy South Wind Farm
EIAR 2020



Key

- Site Boundary
- Turbine
- 45 km Wider Study Area
- 20 km Detailed Study Area
- 5 km Distance Radii

Zone of Theoretical Visibility (ZTV):
Comparative Theoretical Visibility of
Consented Scheme and Proposed
Varied Development

- Area where Proposed Varied Development would be visible
- Area where both the Consented Scheme and the Proposed Varied Development would be visible

0 1.5 3 6 9 12 Kilometers
Scale 1:175,000 @A1



Figure 4.2b
Comparative ZTV of the Consented Scheme
and Proposed Varied Development

Strathclyde South Wind Farm
EIAR 2020