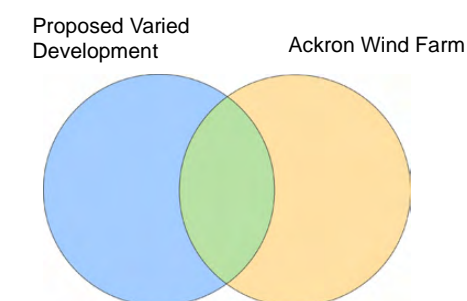


Key

- Site Boundary
- Proposed Turbine
- Ackron Turbine (Scoping)
- 45km Wider Study Area
- 20km Detailed Study Area
- 5 km Distance Radii

Zone of Theoretical Visibility:
Wind Farm Development Theoretically Visible

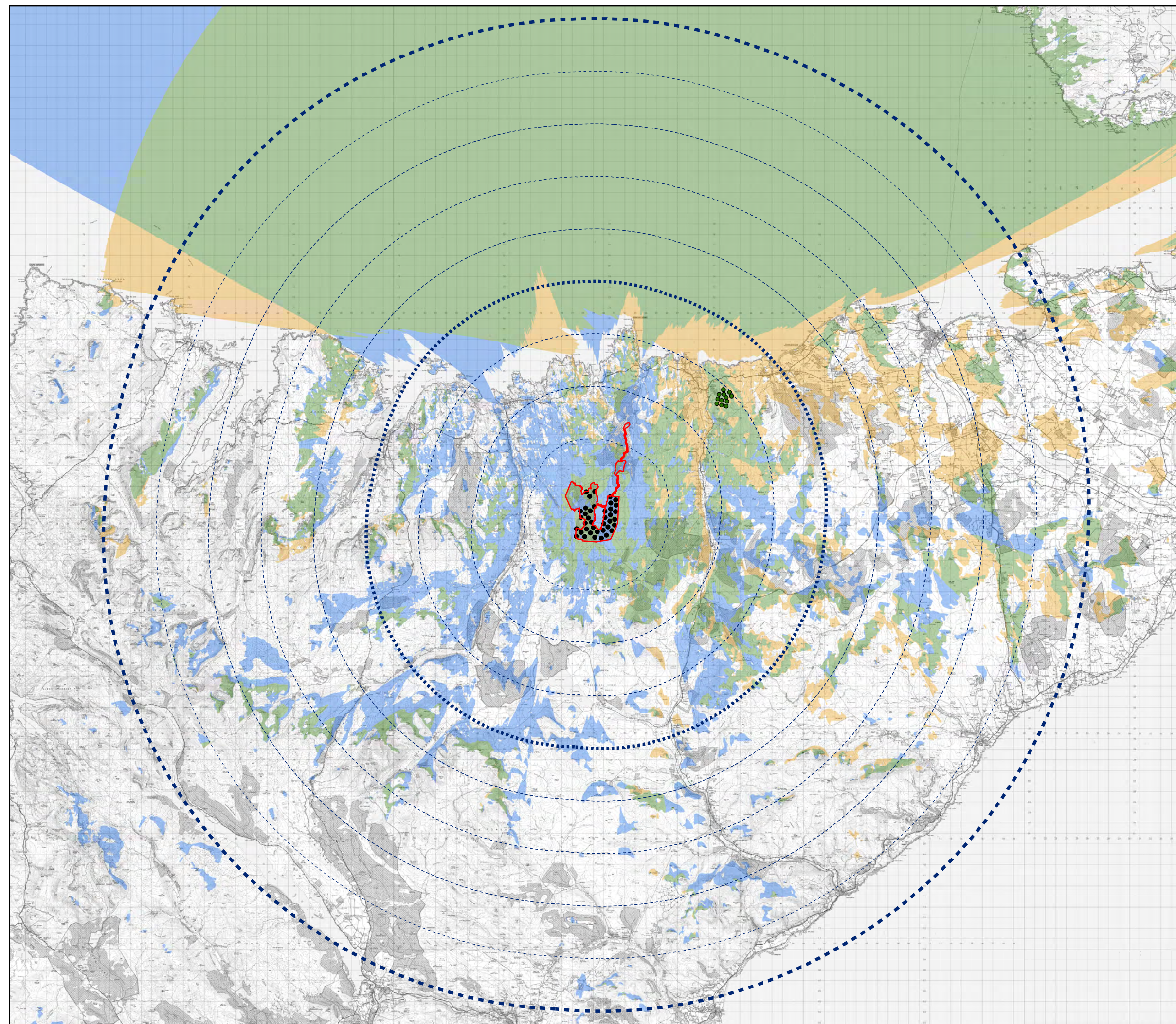


Scale 1:350,000@ A3
0 2 4 6 8 10 Km



Figure 4.7a
Ackron Wind Farm Cumulative ZTV

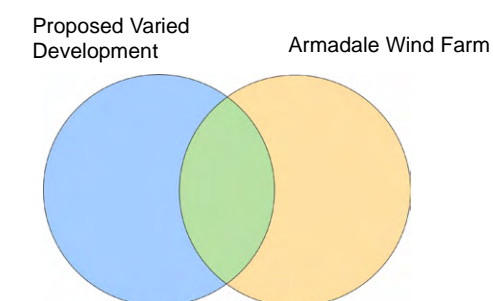
Strathy South Wind Farm
EIAR 2020



Key

- Site Boundary
- Proposed Turbine
- Armadale Wind Farm (Scoping)
- 45 km Wider Study Area
- 20 km Detailed Study Area
- 5 km Distance Radii

Zone of Theoretical Visibility:
Wind Farm Development Theoretically Visible

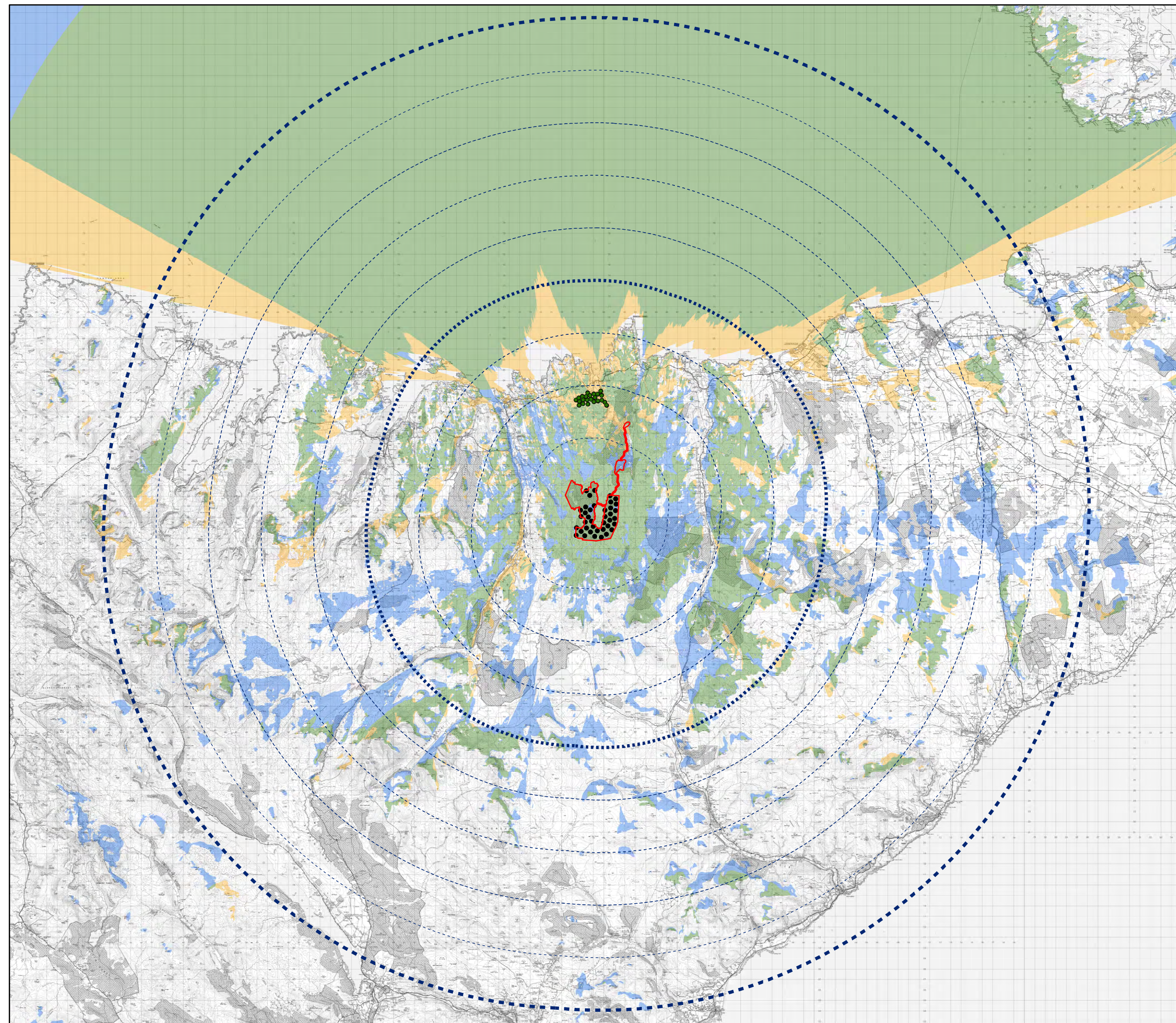


Scale 1:350,000@ A3
0 2 4 6 8 10 Km



Figure 4.7b
Armadale Wind Farm Cumulative ZTV

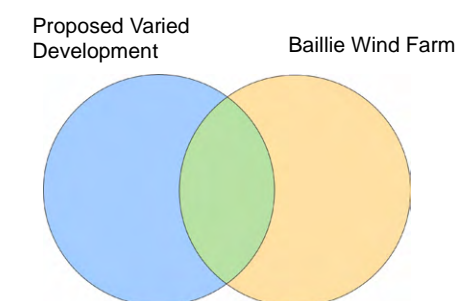
Strathy South Wind Farm
EIAR 2020



Key

- Site Boundary
- Proposed Turbine
- Baillie Wind Farm (Operational)
- 45 km Wider Study Area
- 20 km Detailed Study Area
- 5 km Distance Radii

Zone of Theoretical Visibility:
Wind Farm Development Theoretically Visible

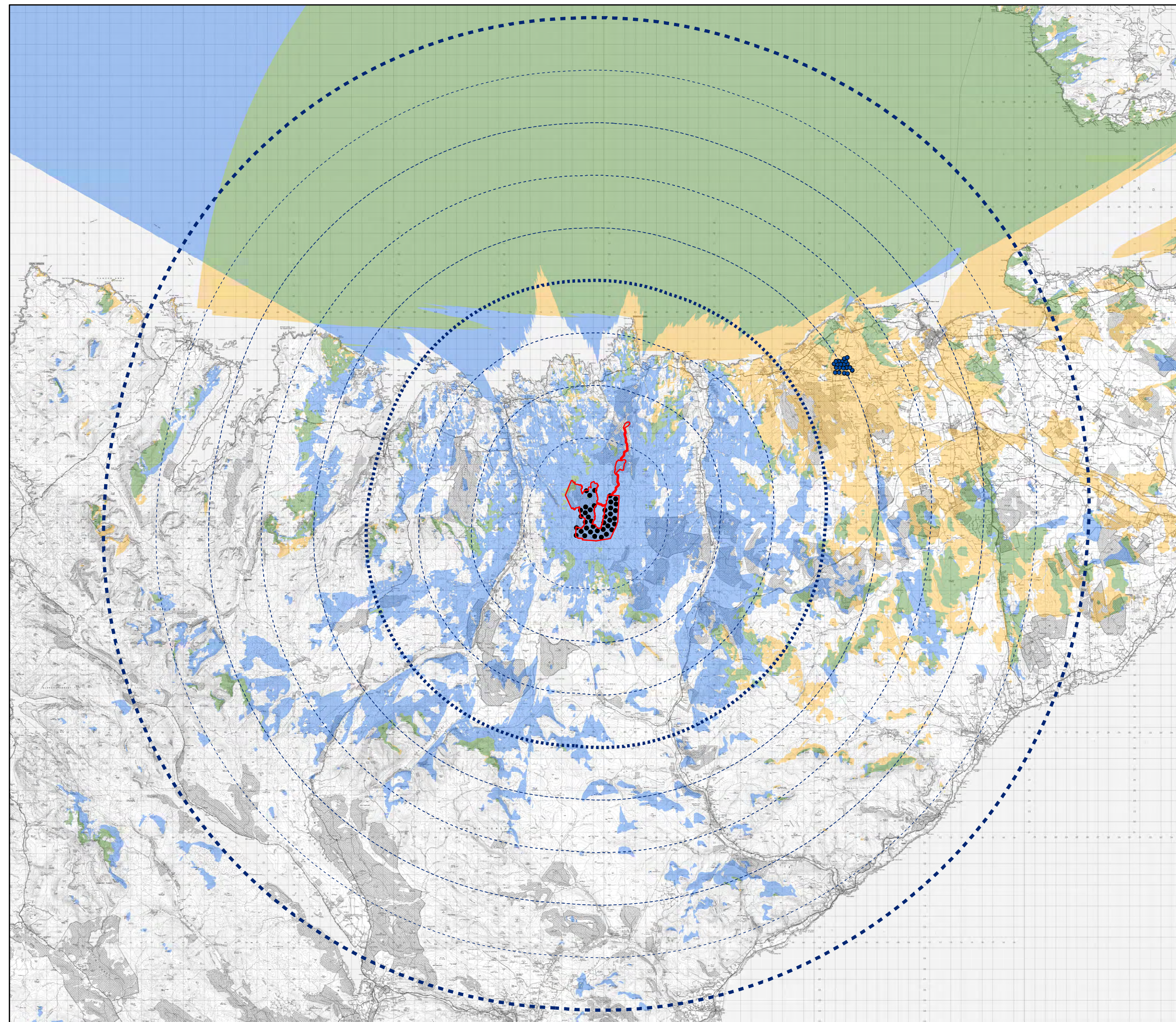


Scale 1:350,000@ A3
0 2 4 6 8 10 Km



Figure 4.7c
Baillie Wind Farm Cumulative ZTV

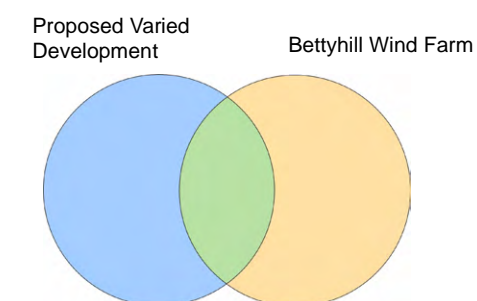
Strathy South Wind Farm
EIAR 2020



Key

- Site Boundary
- Proposed Turbine
- Bettyhill Wind Farm (Operational)
- 45 km Wider Study Area
- 20 km Detailed Study Area
- 5 km Distance Radii

Zone of Theoretical Visibility:
Wind Farm Development Theoretically Visible



Scale 1:350,000@ A3
0 2 4 6 8 10 Km



Figure 4.7d
Bettyhill Wind Farm Cumulative ZTV

Strathy South Wind Farm
EIAR 2020

