


Viewpoint Location Plan  
Scale: 1:50,000 (Blade Tip ZTV)

**Note:**  
1. **ZTV:** Created using ESRI ArcGIS 10.4 software using the following data and parameters:  
Blade tip height: 115/130m  
DTM Data: OS Terrain 5. Resampled to a 10m grid.  
Observer height: 1.5m  
No surface features, such as buildings or trees, were included in the analysis.  
Earth curvature and light refraction has been included in calculations.  
2. © Crown copyright and database rights 2016 Ordnance Survey 10034870.



optimised environments

**Key**

- Gordonbush Extension FEI Layout
- 53.5 degree field of view viewpoint
- Gordonbush Turbine Locations

Gordonbush Extension FEI Layout Blade Tip ZTV

No. of turbines that are theoretically visible

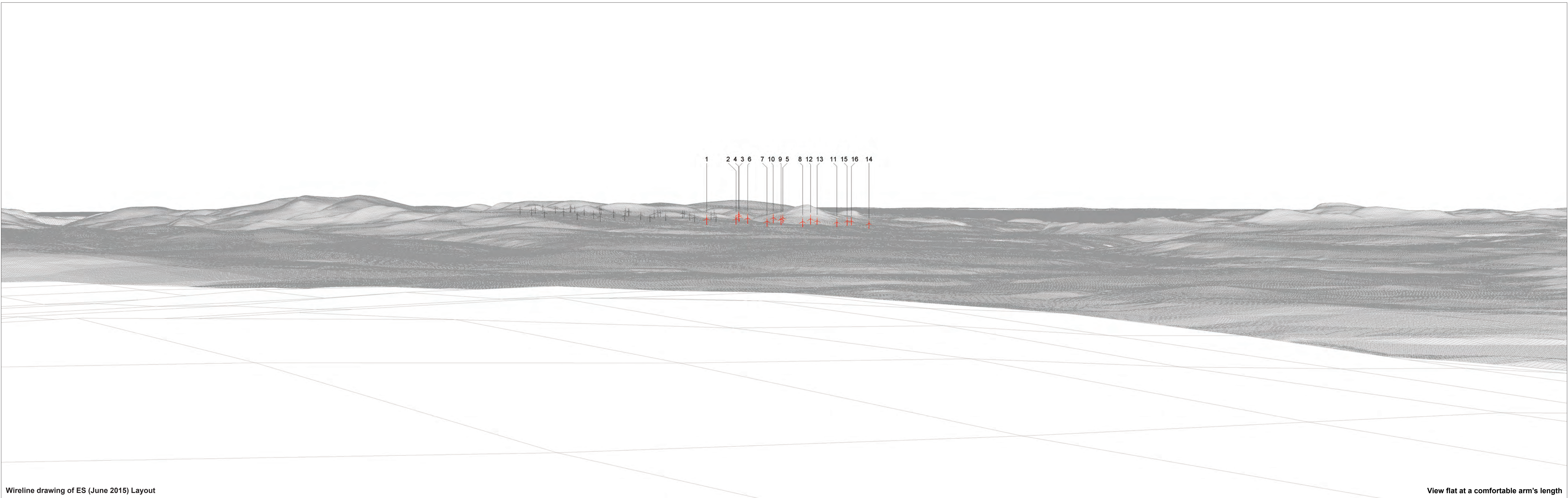
1 - 4
5 - 8
9 - 12
13 - 15

**Figure: 2.22a**  
**SNH VISUALISATIONS VIEWPOINT 15:**  
**BEN ARMINE**

**Gordonbush Extension Wind Farm**  
**FEI**



© Crown copyright and database rights 2016 Ordnance Survey 10034670.



Wireline drawing of ES (June 2015) Layout

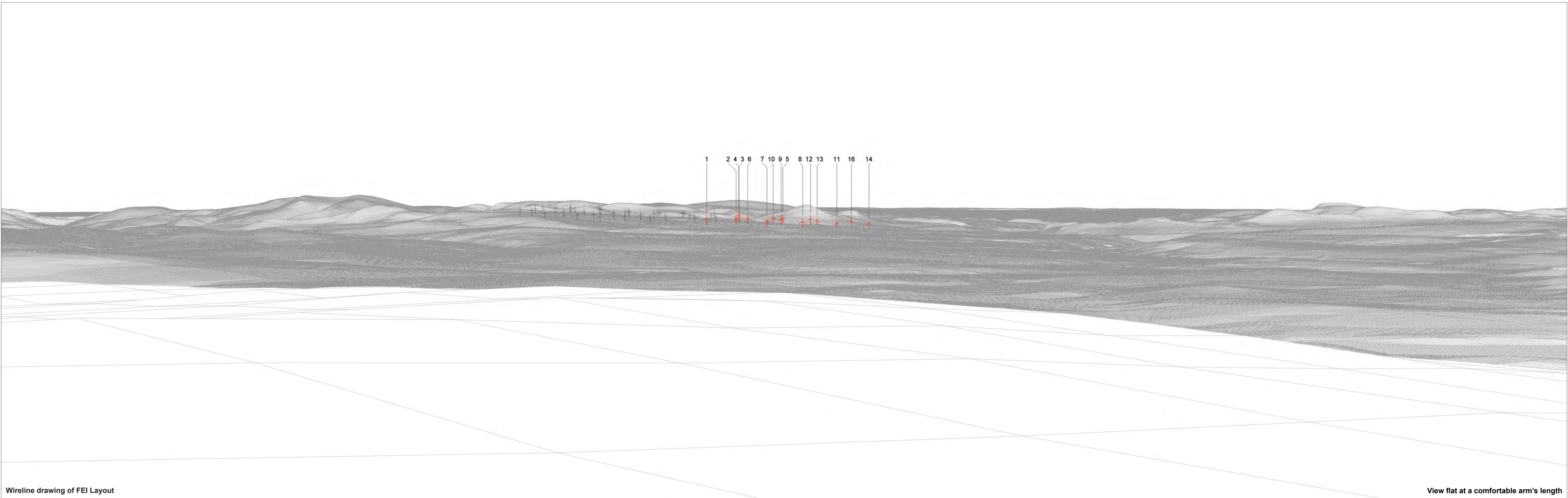
View flat at a comfortable arm's length

OS reference:	269522 E 927232 N	Horizontal field of view:	53.5° (planar projection)	Camera:	Canon EOS 5D Mk2
Eye level:	702.5 m AOD	Principal distance	812.5 mm	Lens:	50mm (Canon EF 50mm f/1.4)
Direction of view:	132°	Paper size:	841 x 297 mm (half A1)	Camera height:	1.5 m AGL
Nearest turbine:	19.619 km	Correct printed image size:	820 x 260 mm	Date and time:	05/11/14, 12:28

Figure: 2.22b ES (June 2015) Layout  
SNH Viewpoint 15: Ben Armine



© Crown copyright and database rights 2016 Ordnance Survey 10034670.



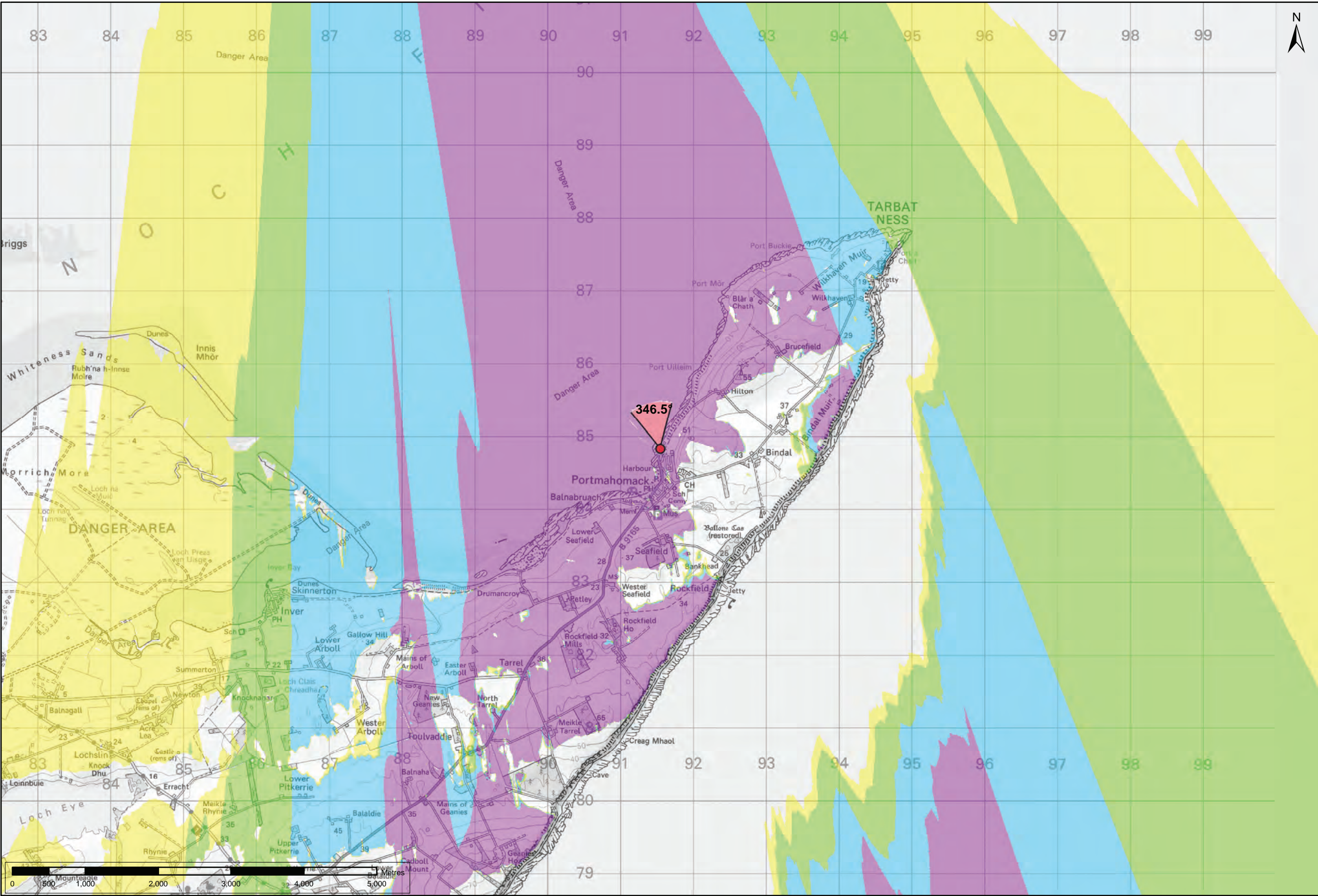
Wireline drawing of FEI Layout

View flat at a comfortable arm's length

OS reference:	269522 E 927232 N	Horizontal field of view:	53.5° (planar projection)	Camera:	Canon EOS 5D Mk2
Eye level:	702.5 m AOD	Principal distance:	812.5 mm	Lens:	50mm (Canon EF 50mm f/1.4)
Direction of view:	132°	Paper size:	841 x 297 mm (half A1)	Camera height:	1.5 m AGL
Nearest turbine:	19.619 km	Correct printed image size:	820 x 260 mm	Date and time:	05/11/14, 12:28


Figure: 2.22c FEI Layout  
SNH Viewpoint 15: Ben Armine





Viewpoint Location Plan  
Scale: 1:50,000 (Blade Tip ZTV)

**Note:**  
1. **ZTV:** Created using ESRI ArcGIS 10.4 software using the following data and parameters:  
Blade tip height: 115/130m  
DTM Data: OS Terrain 5. Resampled to a 10m grid.  
Observer height: 1.5m  
No surface features, such as buildings or trees, were included in the analysis.  
Earth curvature and light refraction has been included in calculations.  
2. © Crown copyright and database rights 2016 Ordnance Survey 10034870.



optimised environments

**Key**

- Gordonbush Extension FEI Layout
- 53.5 degree field of view viewpoint
- Gordonbush Turbine Locations

Gordonbush Extension FEI Layout Blade Tip ZTV

No. of turbines that are theoretically visible

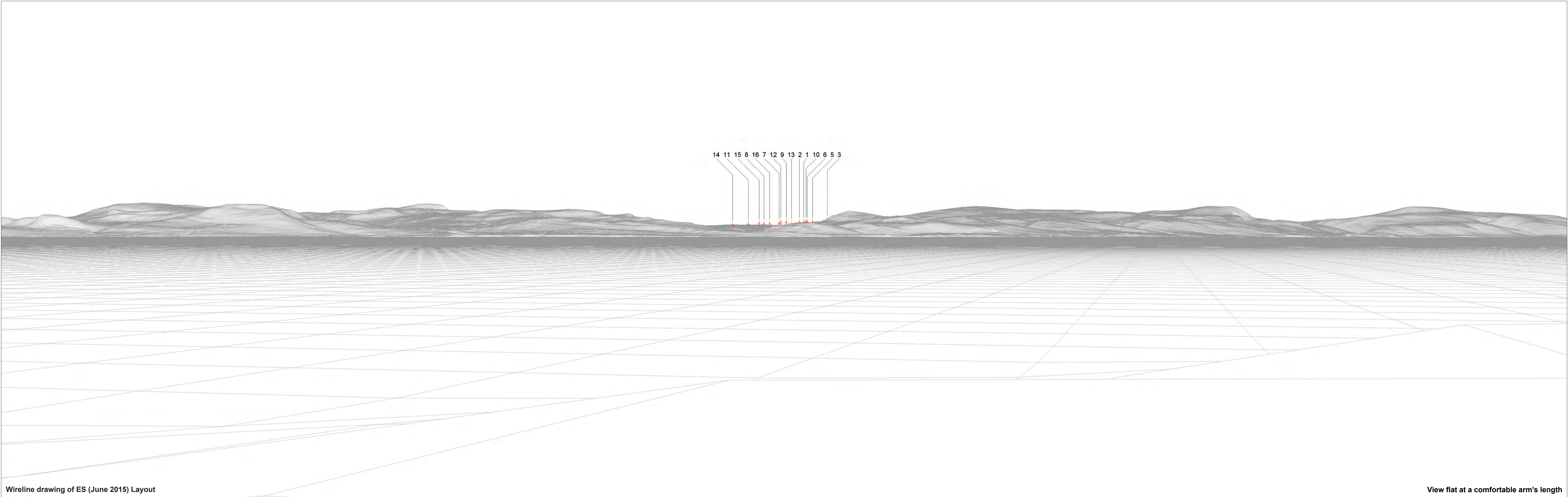
- 1 - 4
- 5 - 8
- 9 - 12
- 13 - 15

**Figure: 2.23a**  
**SNH VISUALISATIONS VIEWPOINT 16:**  
**PORTMAHOMACK**

**Gordonbush Extension Wind Farm**  
**FEI**



© Crown copyright and database rights 2016 Ordnance Survey 10034670



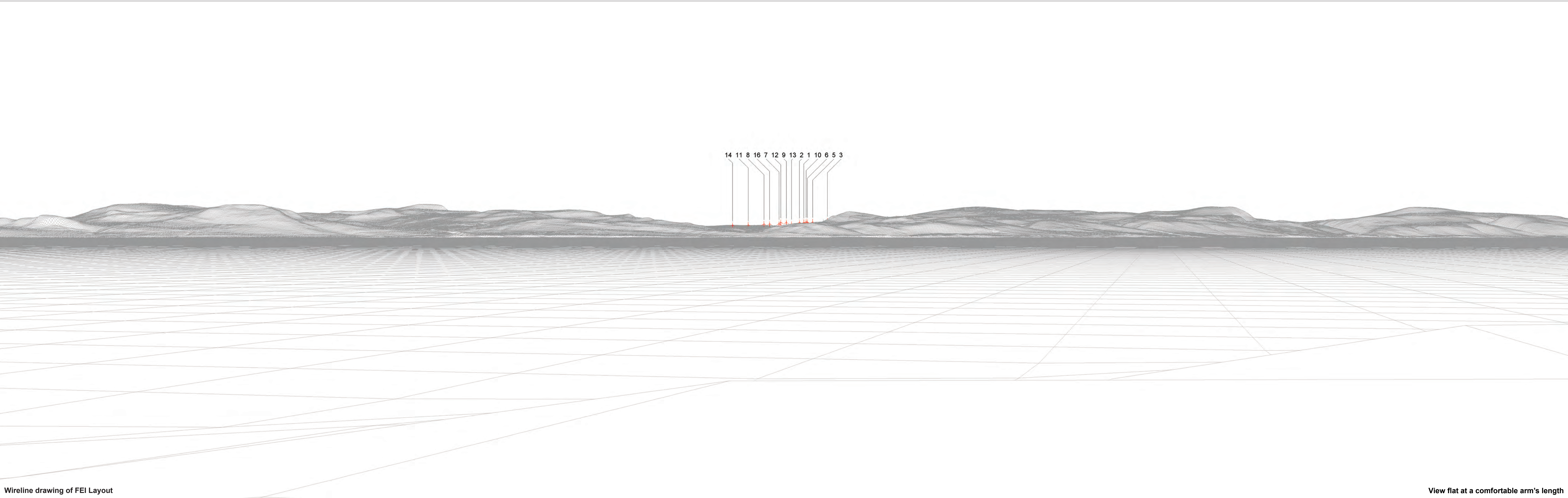
Wireline drawing of ES (June 2015) Layout

View flat at a comfortable arm's length

OS reference:	291545 E 884832 N	Horizontal field of view:	53.5° (planar projection)	Camera:	Canon EOS 5D Mk2	Figure: 2.23b ES (June 2015) Layout
Eye level:	5.5 m AOD	Principal distance	812.5 mm	Lens:	50mm (Canon EF 50mm f/1.4)	SNH Viewpoint 16: Portmahomack
Direction of view:	346.5°	Paper size:	841 x 297 mm (half A1)	Camera height:	1.5 m AGL	
Nearest turbine:	28.385 km	Correct printed image size:	820 x 260 mm	Date and time:	04/03/15 12:14	



© Crown copyright and database rights 2016 Ordnance Survey 10034670.



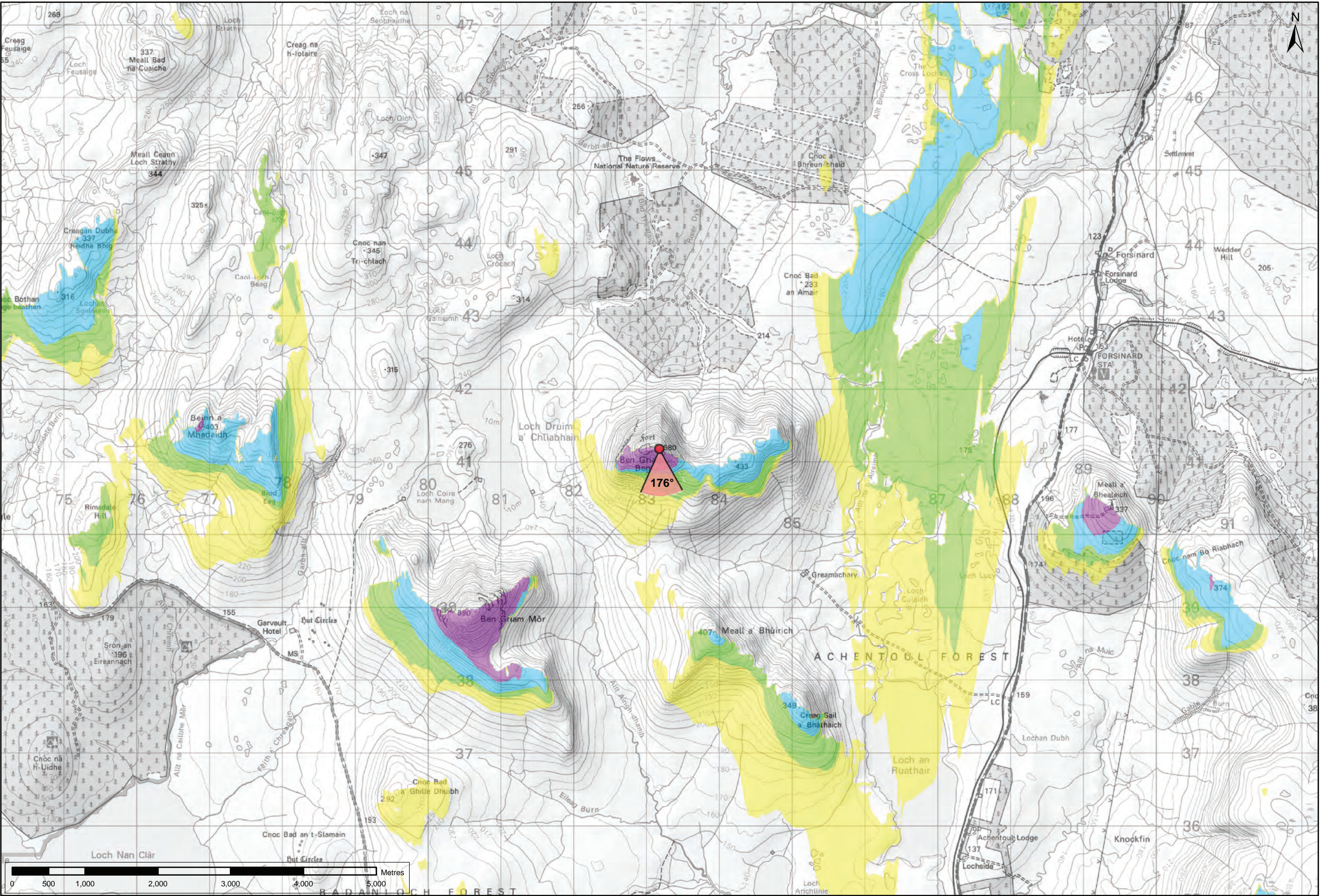
Wireline drawing of FEI Layout

View flat at a comfortable arm's length

OS reference:	291545 E 884832 N	Horizontal field of view:	53.5° (planar projection)	Camera:	Canon EOS 5D Mk2
Eye level:	5.5 m AOD	Principal distance	812.5 mm	Lens:	50mm (Canon EF 50mm f/1.4)
Direction of view:	346.5°	Paper size:	841 x 297 mm (half A1)	Camera height:	1.5 m AGL
Nearest turbine:	28.385 km	Correct printed image size:	820 x 260 mm	Date and time:	04/03/15 12:14

Figure: 2.23c FEI Layout  
SNH Viewpoint 16: Portmahomack





Viewpoint Location Plan  
Scale: 1:50,000 (Blade Tip ZTV)

**Note:**  
1. **ZTV:** Created using ESRI ArcGIS 10.4 software using the following data and parameters:  
Blade tip height: 115/130m  
DTM Data: OS Terrain 5. Resampled to a 10m grid.  
Observer height: 1.5m  
No surface features, such as buildings or trees, were included in the analysis.  
Earth curvature and light refraction has been included in calculations.  
2. © Crown copyright and database rights 2016 Ordnance Survey 10034870.

**Key**

- Gordonbush Extension FEI Layout
- ▼ 53.5 degree field of view viewpoint
- Gordonbush Turbine Locations

Gordonbush Extension FEI Layout Blade Tip ZTV

No. of turbines that are theoretically visible

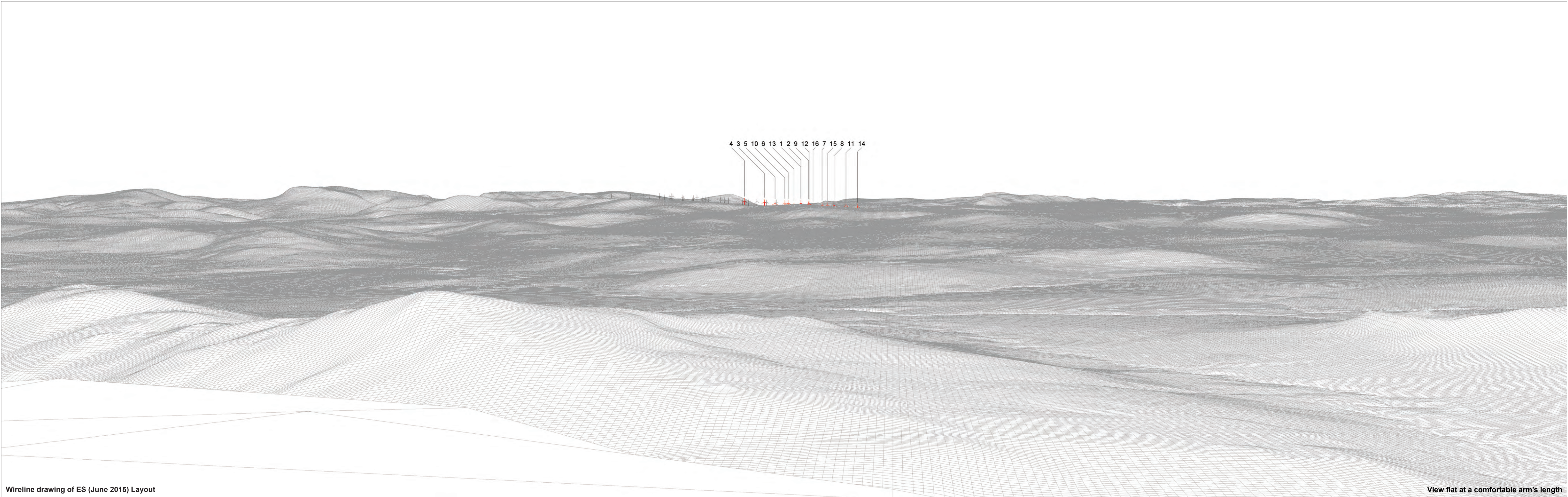
1 - 4
5 - 8
9 - 12
13 - 15

**Figure: 2.23a**  
**SNH VISUALISATIONS VIEWPOINT 17:**  
**BEN GRIAM BEG**

**Gordonbush Extension Wind Farm**  
**FEI**



© Crown copyright and database rights 2016 Ordnance Survey 10004670



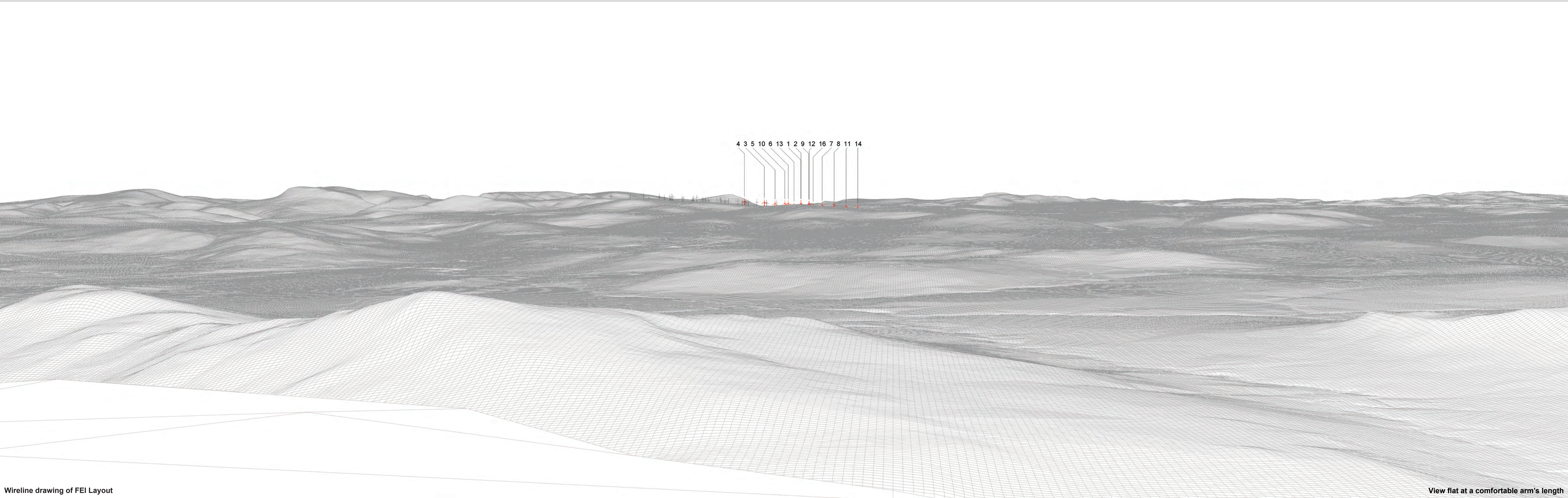
Wireline drawing of ES (June 2015) Layout

View flat at a comfortable arm's length

<b>OS reference:</b>	283180 E 941176 N	<b>Horizontal field of view:</b>	53.5° (planar projection)	<b>Camera:</b>	Canon EOS 5D Mk2	<b>Figure: 2.24b ES (June 2015) Layout SNH Viewpoint 17: Ben Giam Beg</b>
<b>Eye level:</b>	577.5 m AOD	<b>Principal distance</b>	812.5 mm	<b>Lens:</b>	50mm (Canon EF 50mm f/1.4)	
<b>Direction of view:</b>	176°	<b>Paper size:</b>	841 x 297 mm (half A1)	<b>Camera height:</b>	1.5 m AGL	
<b>Nearest turbine:</b>	26.376 km	<b>Correct printed image size:</b>	820 x 260 mm	<b>Date and time:</b>	02/09/2014 14:00	



© Crown copyright and database rights 2016 Ordnance Survey 10004670



<b>OS reference:</b>	283180 E 941176 N	<b>Horizontal field of view:</b>	53.5° (planar projection)	<b>Camera:</b>	Canon EOS 5D Mk2	<b>Figure: 2.24c FEI Layout</b> <b>SNH Viewpoint 17: Ben Grian Beg</b>
<b>Eye level:</b>	577.5 m AOD	<b>Principal distance</b>	812.5 mm	<b>Lens:</b>	50mm (Canon EF 50mm f/1.4)	
<b>Direction of view:</b>	176°	<b>Paper size:</b>	841 x 297 mm (half A1)	<b>Camera height:</b>	1.5 m AGL	
<b>Nearest turbine:</b>	26.376 km	<b>Correct printed image size:</b>	820 x 260 mm	<b>Date and time:</b>	02/09/2014 14:00	