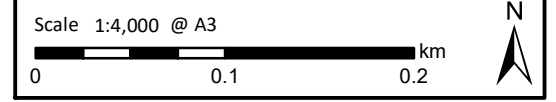
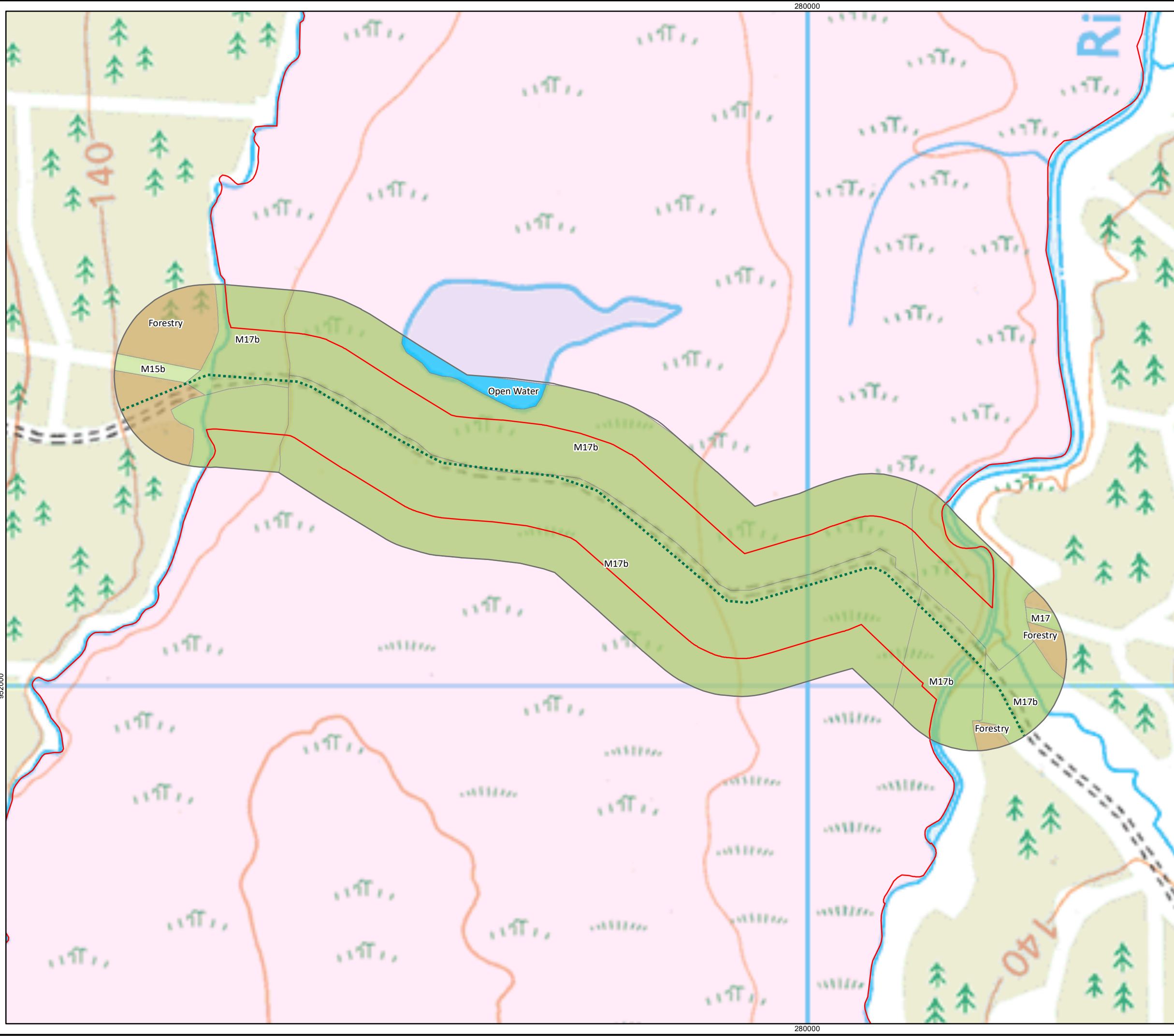


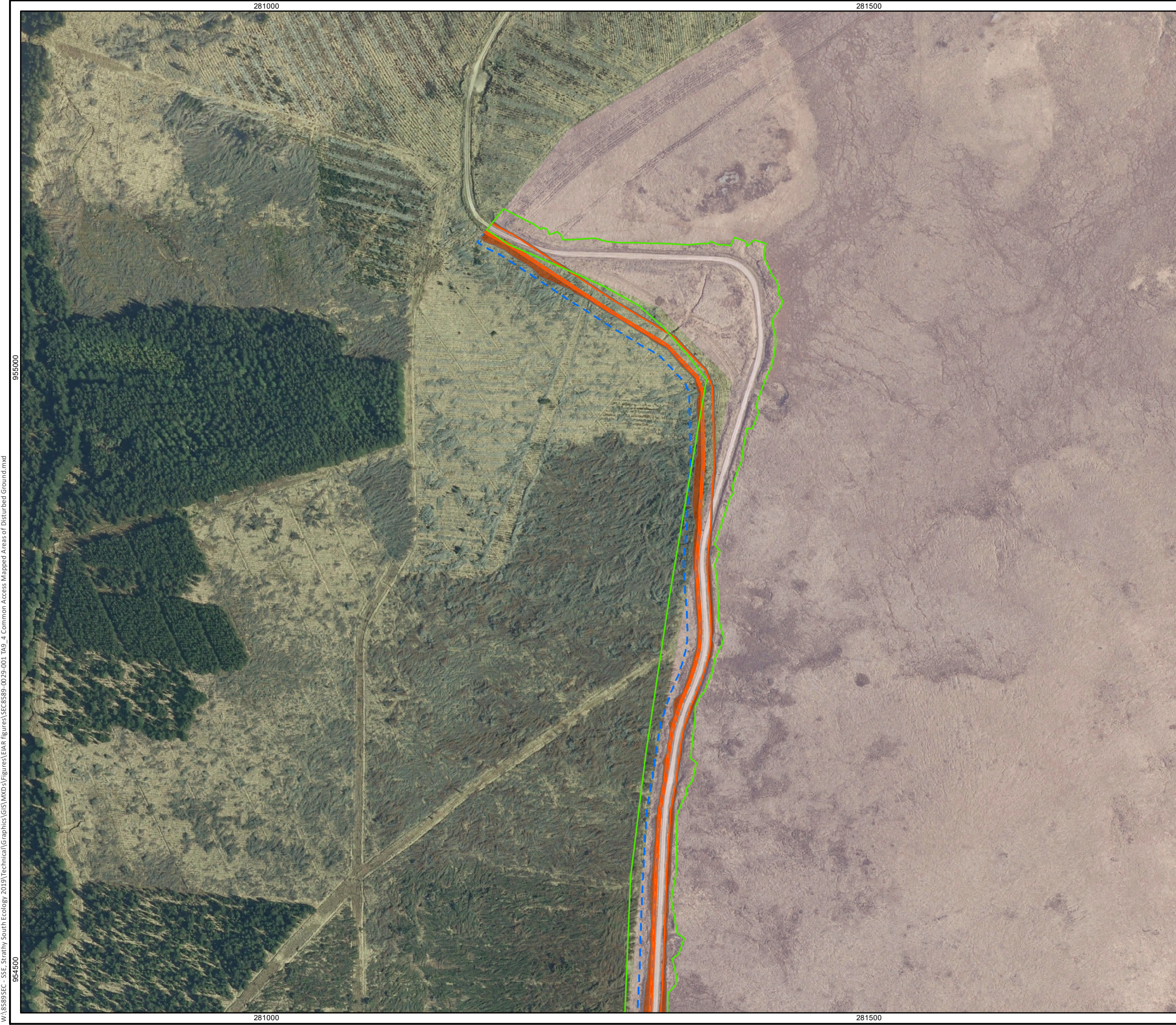
- Site Boundary
- Caithness and Sutherland Peatlands SAC and SPA
- Existing Yellow Bog Track to be Upgraded for use by Construction Traffic

- NVC habitats
- M4
  - M15
  - M17
  - M19
  - M25
  - MG9
  - S9
  - U20
  - Coniferous woodland
  - Standing water

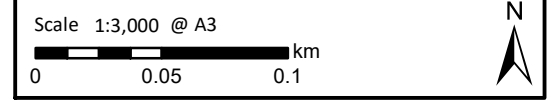


**Figure 9.4.2b**  
**NVC Survey Results (2012)**  
**Yellow Bog Track**

**Strathy South Wind Farm**  
**EIAR 2020**



- Key**
- Proposed access track/ditch (permanent infrastructure footprint)
  - Proposed earthworks
  - Non-qualifying SAC habitat
  - 10m buffer from permanent infrastructure footprint
  - Caithness and Sutherland Peatlands SAC and SPA



**Figure 9.4.3a**  
Common Access Mapped Areas  
of Disturbed Ground

**Strathy South Wind Farm**  
EIAR 2020

W:\8589SEC - SSE, Strathy South Ecology 2019\Technical\Graphics\GIS\WMS\Figures\EIAR figures\SEC8589-0029-001 TAG\_4 Common Access Mapped Areas of Disturbed Ground.mxd