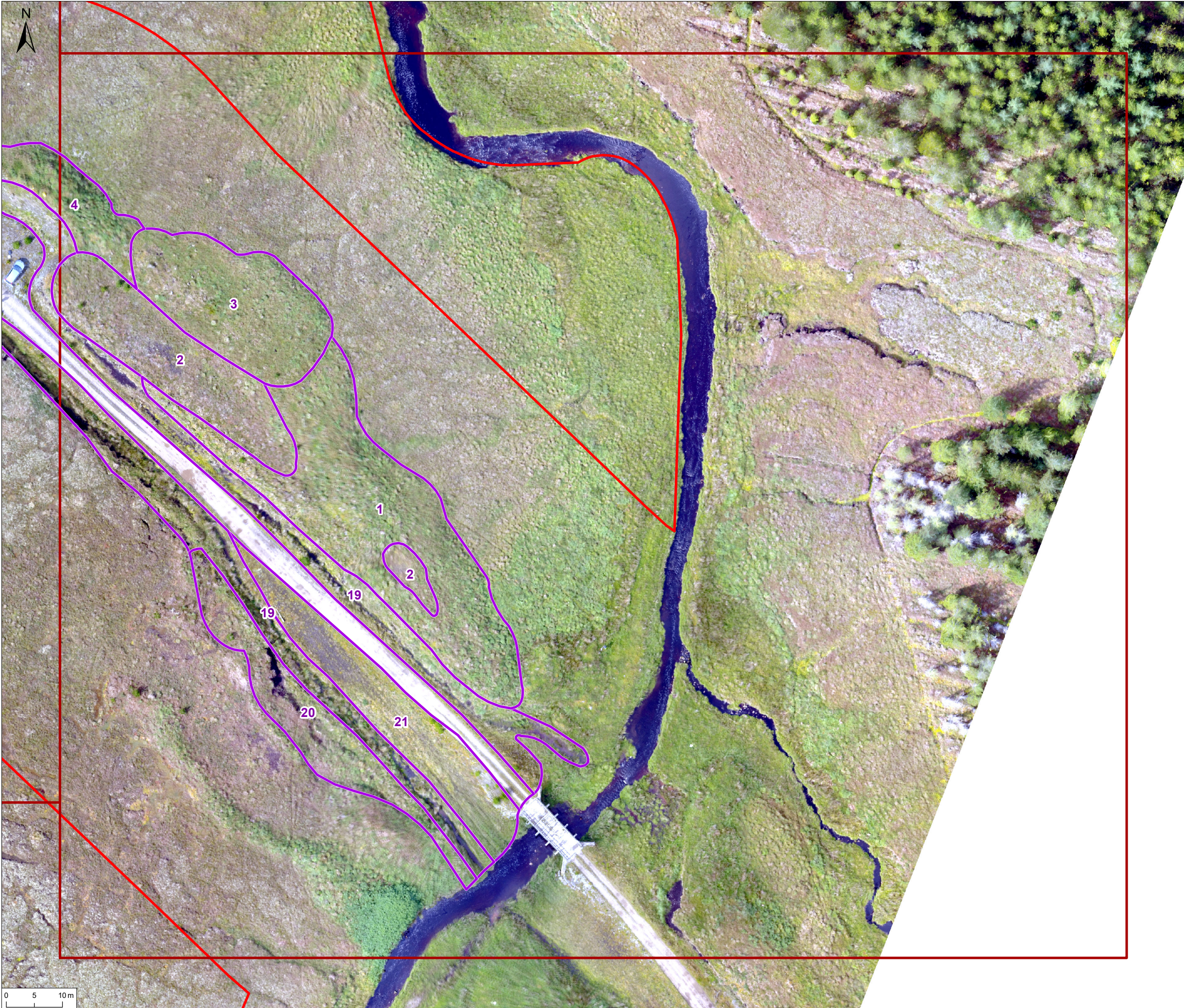


W:\8591SEC - SSE, Strathly South, Yellow Bog Track Assessment\Technical\Graphics\GIS\MXDs\Figures\2019\108 Track Assessment\8591sec_fig3 - MappedHabitats.mxd



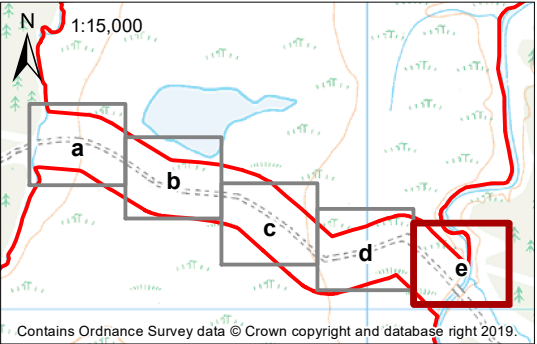
© 2019 RPS Group

Notes


1. This drawing has been prepared in accordance with the scope of RPS's appointment with its client and is subject to the terms and conditions of that appointment. RPS accepts no liability for any use of this document other than by its client and only for the purposes for which it was prepared and provided.

2. If received electronically it is the recipients responsibility to print to correct scale. Only written dimensions should be used.

- Legend**
- Site boundary
 - Mapped habitats with target note references (1-22)



Rev	Description	By	CB	Date



MAKING
COMPLEX
EASY

Belford House, 3rd Floor, 59 Belford Road, Edinburgh, EH4 3DE
T: +44(0)131 555 5011 E: rpsed2@rpsgroup.com

Client **SSE Renewables**

Project **Strathly South Wind Farm
Yellow Bog Access Track**

Title **Mapped Habitats with Target Notes**

Status FINAL	Drawn By KAG	PM/Checked By SL
Project Number SEC8591	Scale @ A3 1:650	Date Created NOV 2019
Figure Number 3e		Rev -

rpsgroup.com

W:\8591SEC - SSE, Strathly South, Yellow Bog Track Assessment\Technical\Graphics\GIS\MXDs\Figures\2019\1108 Track Assessment\8591sec_fig4 - DroneSurvey_ContourMap.mxd



Source: Esri, DigitalGlobe, GeoEye, Earthstar Geographics, CNES/Airbus DS, USDA, USGS, AeroGRID, IGN, and the GIS User Community

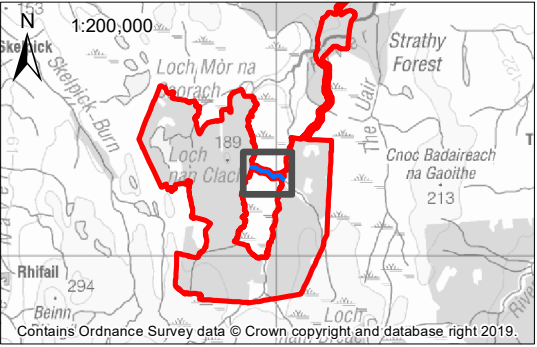
© 2019 RPS Group

Notes


1. This drawing has been prepared in accordance with the scope of RPS's appointment with its client and is subject to the terms and conditions of that appointment. RPS accepts no liability for any use of this document other than by its client and only for the purposes for which it was prepared and provided.

2. If received electronically it is the recipients responsibility to print to correct scale. Only written dimensions should be used.

- Legend**
- Site boundary
 - Yellow Bog access track



Rev	Description	By	CB	Date



MAKING
COMPLEX
EASY

Belford House, 3rd Floor, 59 Belford Road, Edinburgh, EH4 3DE
T: +44(0)131 555 5011 E: rpsed2@rpsgroup.com

Client	SSE Renewables		
Project	Strathly South Wind Farm Yellow Bog Access Track		
Title	Contour Map (generated from drone survey)		
Status	Drawn By	PM/Checked By	
FINAL	KAG	SL	
Project Number	Scale @ A3	Date Created	
SEC8591	1:4,000	NOV 2019	
Figure Number			Rev
4			-

rpsgroup.com

W:\859\SEC - SSE\ Strathy South, Yellow Bog Track Assessment\Technical\Graphics\GIS\MXDs\Figures\2019\108 Track Assessment\859\sec_fig5a - Location_Cross_Sections.mxd



Source: Esri, DigitalGlobe, GeoEye, Earthstar Geographics, CNES/Airbus DS, USDA, USGS, AeroGRID, IGN, and the GIS User Community

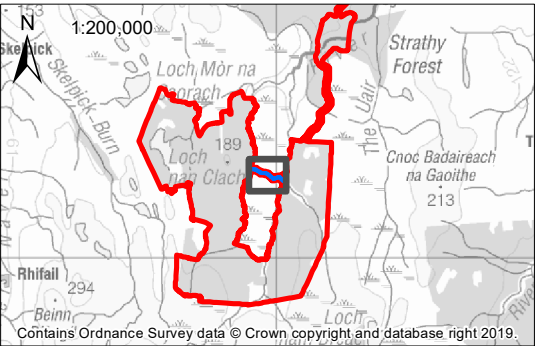
© 2019 RPS Group

Notes


1. This drawing has been prepared in accordance with the scope of RPS's appointment with its client and is subject to the terms and conditions of that appointment. RPS accepts no liability for any use of this document other than by its client and only for the purposes for which it was prepared and provided.

2. If received electronically it is the recipients responsibility to print to correct scale. Only written dimensions should be used.

- Legend**
- Site boundary
 - Yellow Bog access track
 - Mapped zone of impact
 - Location of cross sections A-H



Rev	Description	By	CB	Date



MAKING
COMPLEX
EASY

Belford House, 3rd Floor, 59 Belford Road, Edinburgh, EH4 3DE
T: +44(0)131 555 5011 E: rpsed2@rpsgroup.com

Client **SSE Renewables**

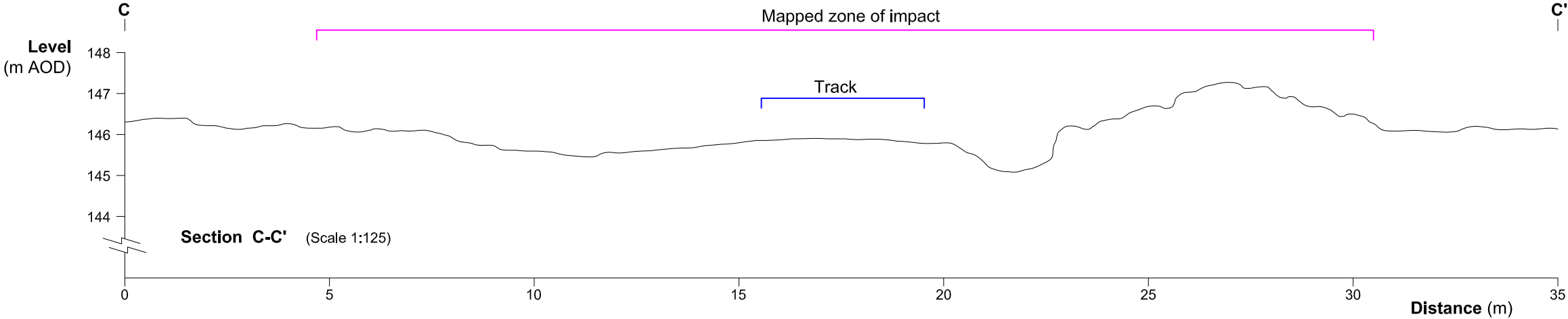
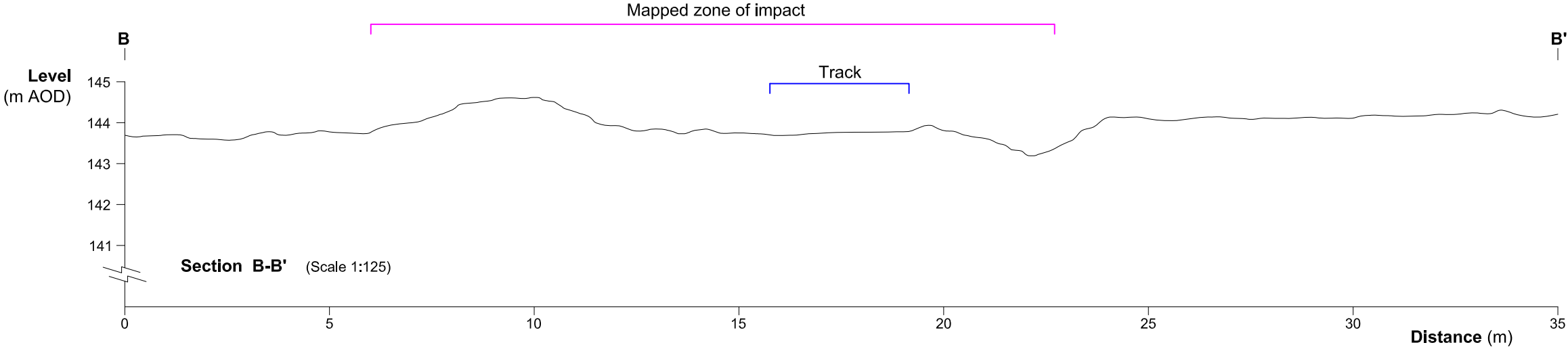
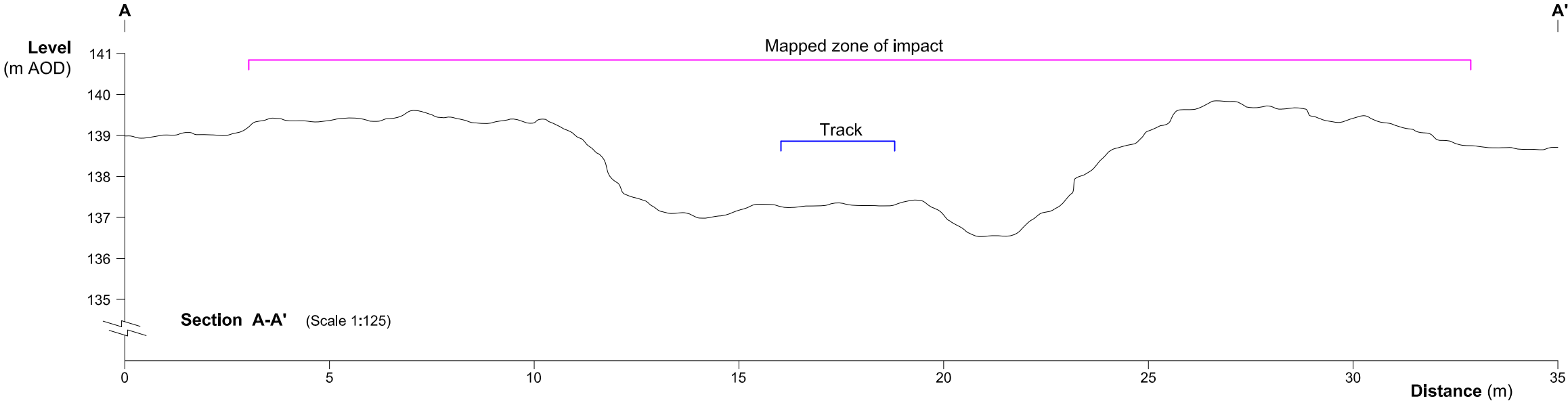
Project **Strathy South Wind Farm
Yellow Bog Access Track**

Title **Location of Cross Sections**

Status FINAL	Drawn By KAG	PM/Checked By SL
Project Number SEC8591	Scale @ A3 1:3,000	Date Created NOV 2019
Figure Number 5a	Rev -	

rpsgroup.com

W:\8591SEC - SSE, Strathly South, Yellow Bog Track Assessment\Technical\Graphics\GIS\MXDs\Figures\20191108 Track Assessment\8591sec_fig5b_d - Track_Cross_Sections_20191108.dwg

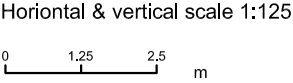


© 2019 RPS Group

Notes

1. This drawing has been prepared in accordance with the scope of RPS's appointment with its client and is subject to the terms and conditions of that appointment. RPS accepts no liability for any use of this document other than by its client and only for the purposes for which it was prepared and provided.

2. If received electronically it is the recipients responsibility to print to correct scale. Only written dimensions should be used.



Rev	Description	By	CB	Date



Belford House, 3rd Floor, 59 Belford Road, Edinburgh, EH4 3DE
T: +44(0)131 555 5011 E: rpsed2@rpsgroup.com

Client SSE Renewables

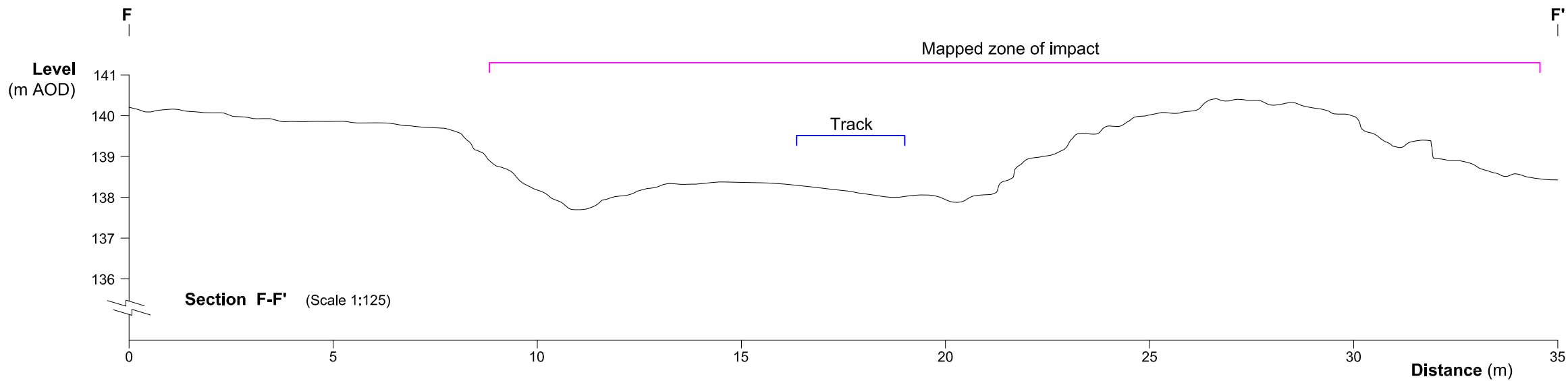
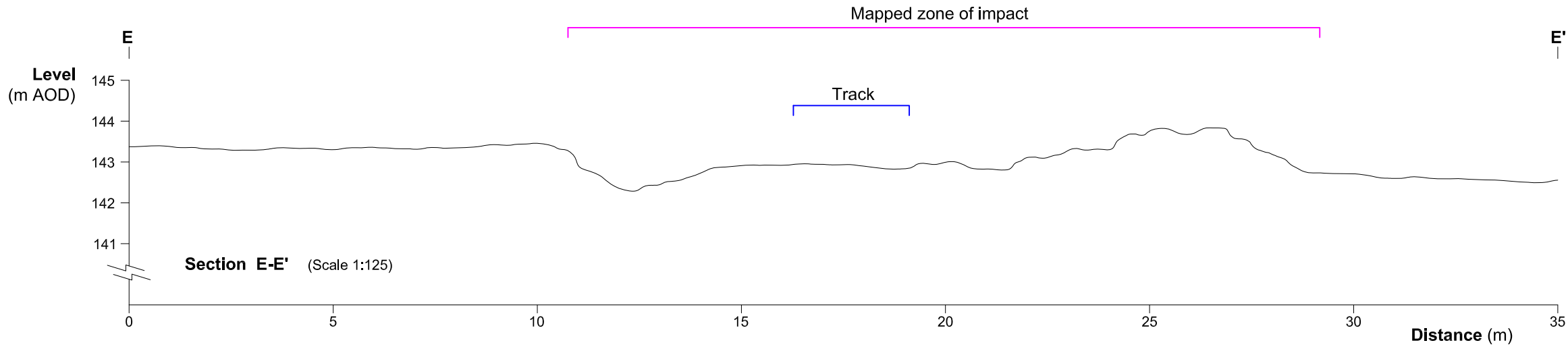
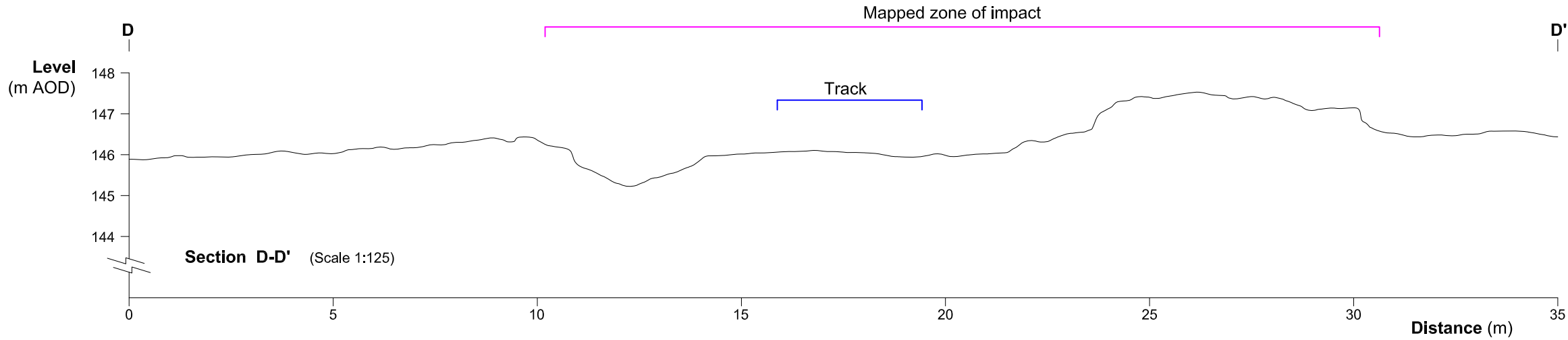
Project Strathly South Wind Farm
Yellow Bog Access Track

Title Cross Sections: A, B & C

Status	Drawn By	PM/Checked by
FINAL	KAG	SL
Job Ref	Scale @ A3	Date Created
SEC8591	1:125	NOV19
RPS Drawing/Figure Number	Rev	
5b	-	

rpsgroup.com

W:\8591SEC - SSE, Strathly South, Yellow Bog Track Assessment\Technical\Graphics\GIS\MXDs\Figures\20191108 Track Assessment\8591sec_fig5b_d - Track_Cross_Sections_20191108.dwg



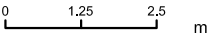
© 2019 RPS Group

Notes

1. This drawing has been prepared in accordance with the scope of RPS's appointment with its client and is subject to the terms and conditions of that appointment. RPS accepts no liability for any use of this document other than by its client and only for the purposes for which it was prepared and provided.

2. If received electronically it is the recipients responsibility to print to correct scale. Only written dimensions should be used.

Horizontal & vertical scale 1:125



Rev	Description	By	CB	Date



Belford House, 3rd Floor, 59 Belford Road, Edinburgh, EH4 3DE
T: +44(0)131 555 5011 E: rpsed2@rpsgroup.com

Client SSE Renewables

Project Strathly South Wind Farm
Yellow Bog Access Track

Title Cross Sections: D, E & F

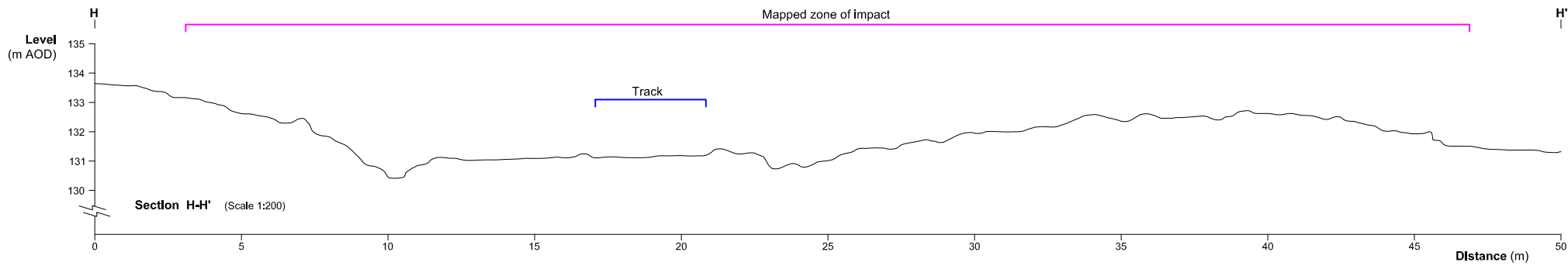
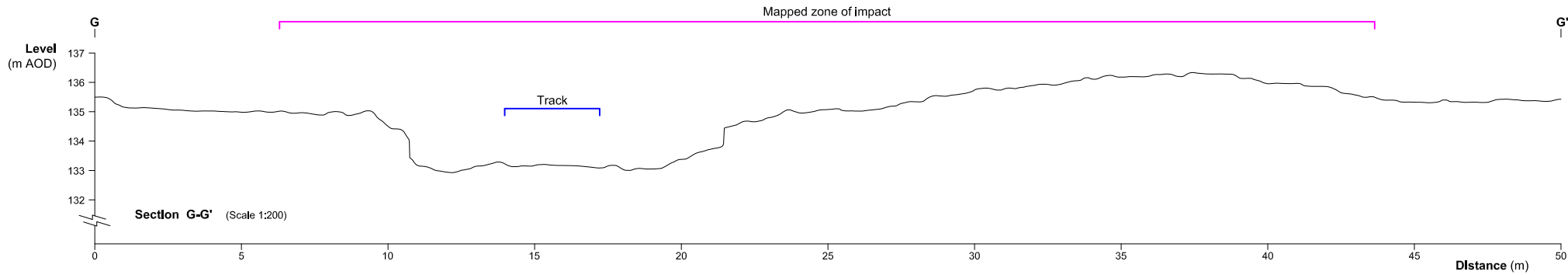
Status Drawn By PM/Checked by
FINAL KAG SL

Job Ref Scale @ A3 Date Created
SEC8591 1:125 NOV19

RPS Drawing/Figure Number Rev
5c -

rpsgroup.com

W:\8591SEC - SSE, Strathly South, Yellow Bog Track Assessment\Technical\Graphics\GIS\MXDs\Figures\20191108 Track Assessment\8591sec_fig5b_d - Track_Cross_Sections_20191108.dwg



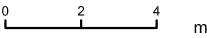
© 2019 RPS Group

Notes

1. This drawing has been prepared in accordance with the scope of RPS's appointment with its client and is subject to the terms and conditions of that appointment. RPS accepts no liability for any use of this document other than by its client and only for the purposes for which it was prepared and provided.

2. If received electronically it is the recipients responsibility to print to correct scale. Only written dimensions should be used.

Horizontal & vertical scale 1:200



Rev	Description	By	CB	Date



Belford House, 3rd Floor, 59 Belford Road, Edinburgh, EH4 3DE
T: +44(0)131 555 5011 E: rpsed2@rpsgroup.com

Client SSE Renewables

Project Strathly South Wind Farm
 Yellow Bog Access Track

Title Cross Sections: G & H

Status	Drawn By	PM/Checked by
FINAL	KAG	SL
Job Ref	Scale @ A3	Date Created
SEC8591	1:200	NOV19

RPS Drawing/Figure Number	Rev
5d	-

rpsgroup.com