

- Key**
- Proposed Turbine
 - Application Turbine
 - 40km Wider Study Area
 - 20km Detailed Study Area
 - 5km Distance Radii
 - ▭ Cairngorms National Park Boundary (CNP)

Zone of Theoretical Visibility:
Wind Farm Development Theoretically Visible

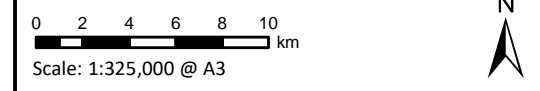
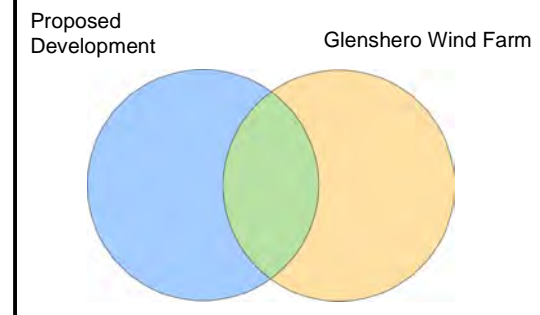


Figure 7.8.6
Cumulative ZTV - Proposed Development with Glenshero

Cloiche Wind Farm
EIA Report