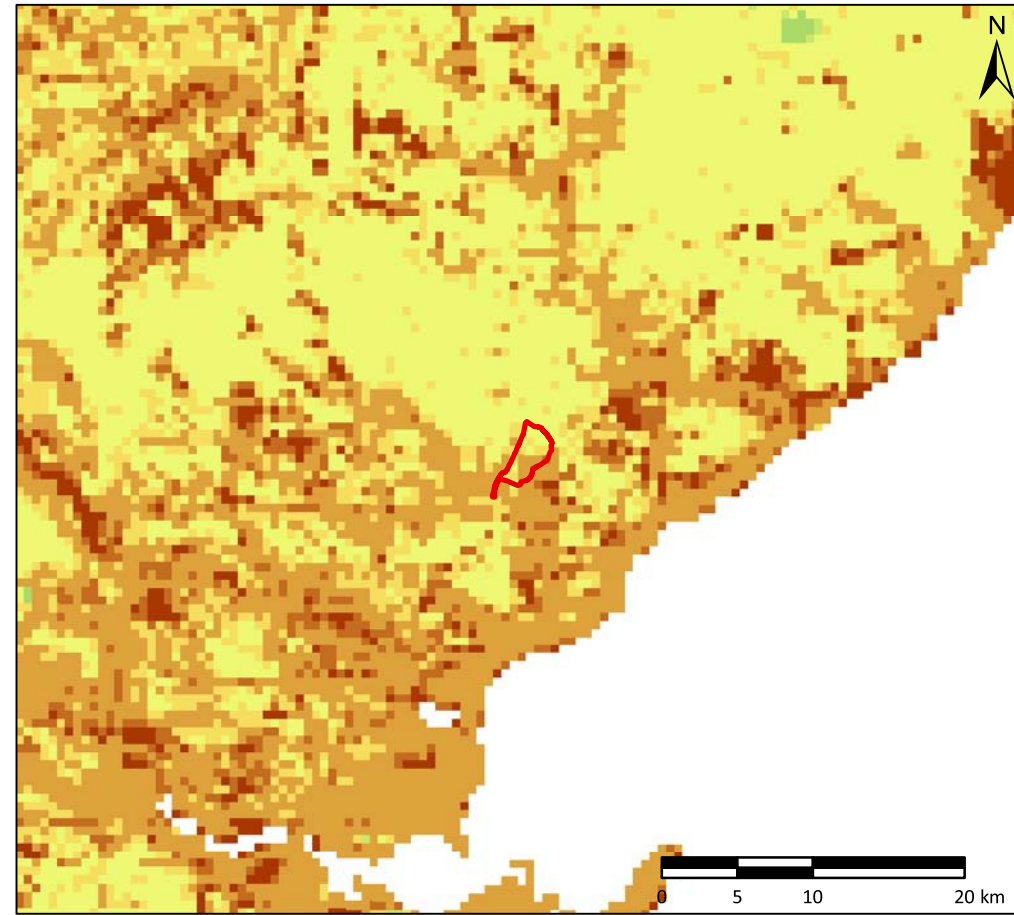
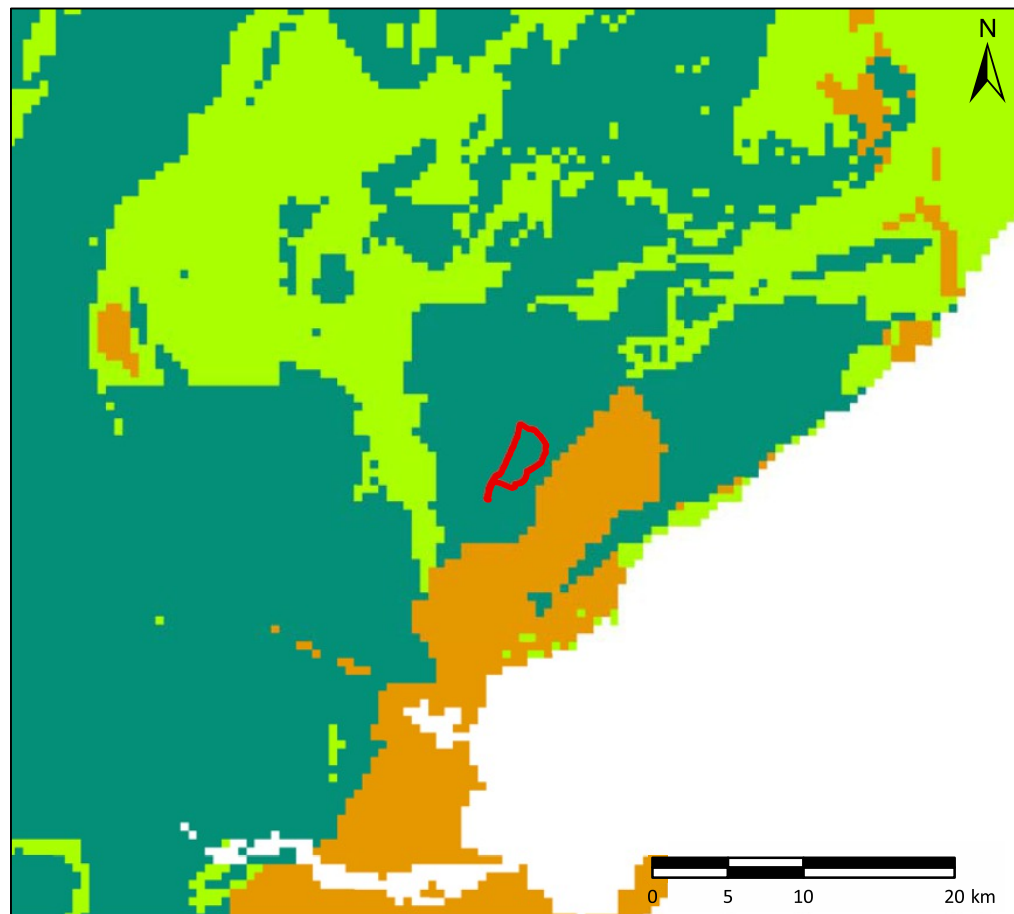


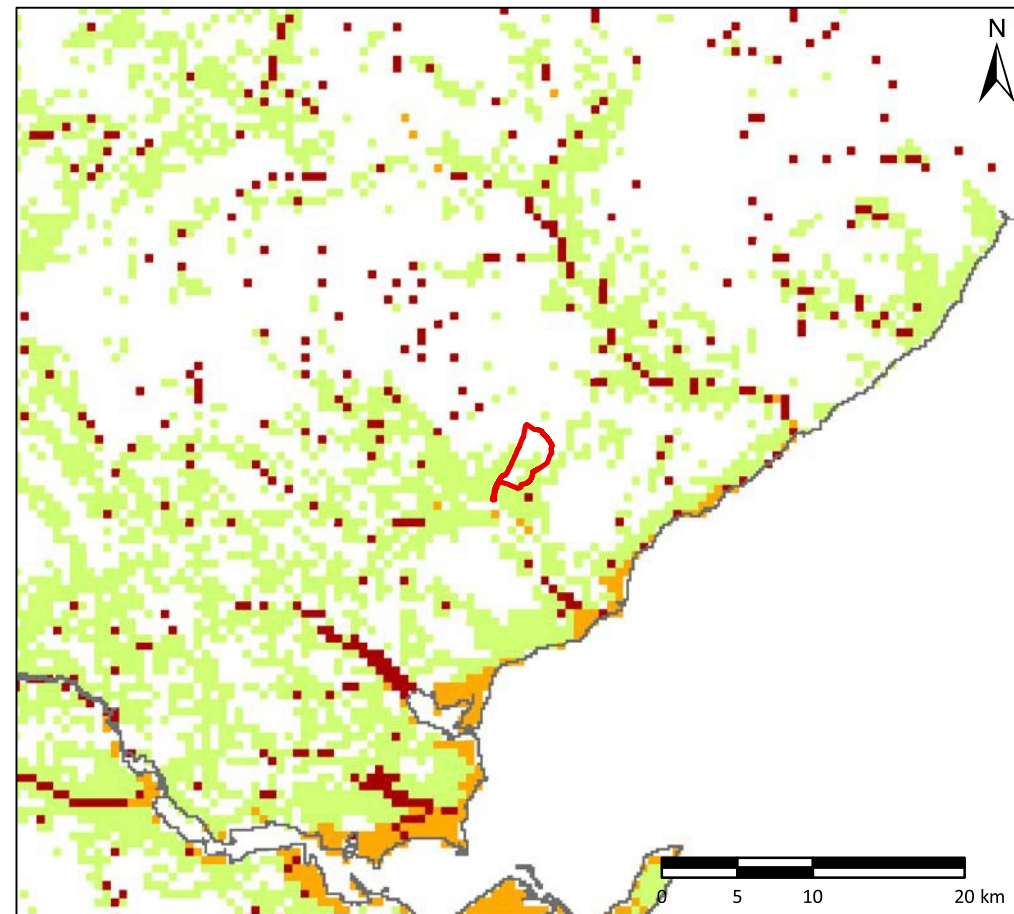
MAP EXTRACT



GROUNDWATER VULNERABILITY IN THE UPPER MOST AQUIFER



BEDROCK AQUIFERS



SUPERFICIAL AQUIFERS

Key

Site Boundary

Superficial Aquifers

I H
 I M
 I L

H = High productivity
M = Moderate productivity
L = Low productivity

Bedrock Aquifers

DI VH
 IF VH
 DI H
 IF H
 IF M
 F M
 IF L
 F L
 IF VL
 F VL

DI = Dominantly intergranular flow
IF = Intergranular fracture flow
I = Intergranular flow
F = Fracture flow

VH = Very High productivity
H = High productivity
M = Moderate productivity
L = Low productivity
VL = Very Low productivity

Groundwater Vulnerability in the Upper Most Aquifer Vulnerability Class

5 (Most vulnerable)
 4a
 4b
 4c
 4d
 3
 2
 1 (Least vulnerable)

2004 SNIFFER (Maps produced by BGS/MI)
Includes material based on Ordnance Survey mapping with the permission of the Controller of Her Majesty's Stationary Office, Crown Copyright, Licence number AL100012293

Figure 9.5

GROUNDWATER VULNERABILITY

**Gordonbush Extension Wind Farm
Environmental Statement**