

Key

- Site Boundary
- Footprint of Development
- Turbine
- Turbine 500m Buffer *

Vantage Point (VP) Location

- Primary Location
- Other Locations Used
- View Direction

Indicative Viewsheds **

- VP1
- VP2A - Primary
- VP2B } Secondary (e.g. used when deep snow prevented access to VP2A)
- VP2C }
- VP2D }
- VP3
- VP4
- Waterbody (incl. ID)

Note

* The 500m turbine buffer is also referred to as the 'flight risk area' (FRA), as used within the collision risk modelling (CRM).

** The viewsheds have been generated using 50m resolution digital terrain model data (OS Terrain 50) and have a 10m a.g.l. offset. Viewsheds have been clipped at 2km radii from the VP, and limited to a 180 degree arc of view.

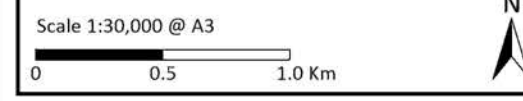


Figure 5.3a
Vantage Point Locations and Viewsheds 2018-19 (Western Cluster)

Cloiche Wind Farm
Additional Information