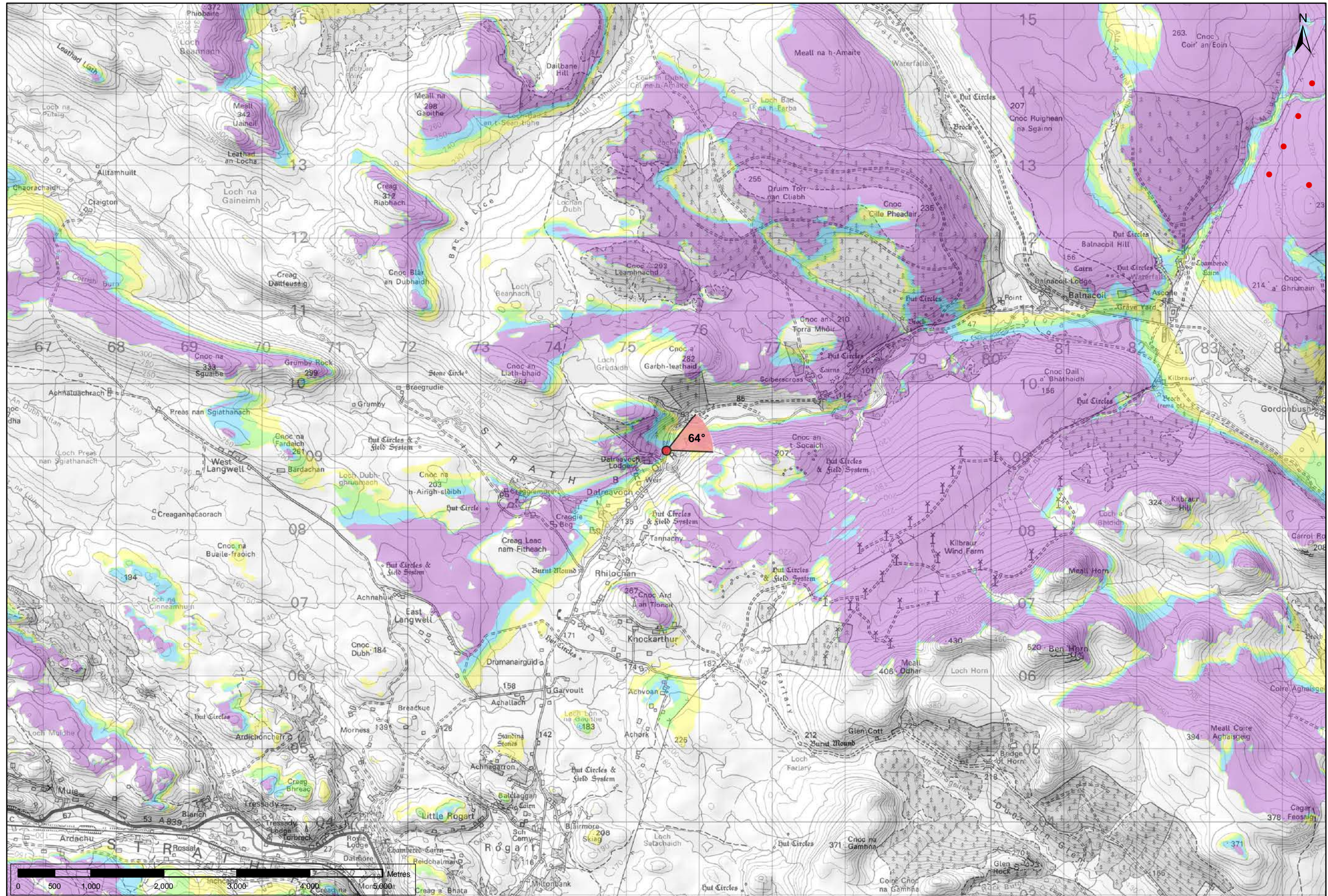


Viewpoint Location Plan Baseline Panorama
Scale: 1:150,000



Viewpoint Location Plan
Scale: 1:50,000 (Blade Tip ZTV)

Note:
1. ZTV: Created using ESRI ArcGIS 10.2.2 software using the following data and parameters:
Blade tip height: 115/130m
DTM Data: OS Terrain 5. Resampled to a 10m grid.
Observer height: 1.5m
No surface features, such as buildings or trees, were included in the analysis.
Earth curvature and light refraction has been included in calculations.
2. © Crown copyright and database rights 2015 Ordnance Survey 10034870.

- Key**
- Gordonbush Extension Turbine
 - ◀ 90 degree field of view viewpoint
 - ◀ 53.5 degree field of view viewpoint
- Wind Farm Status (1:150,000 only):
- Turbine Locations
 - ◀ Gordonbush Extension Site Boundary
 - ◀ Operational
 - ◀ Consented
 - ◀ Application
 - ◀ Scoping

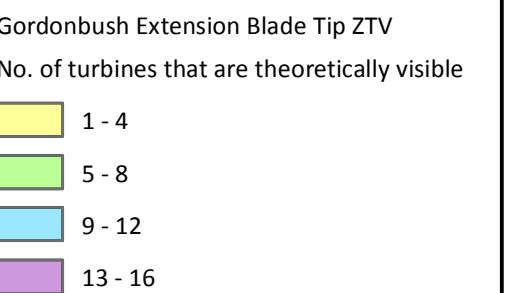
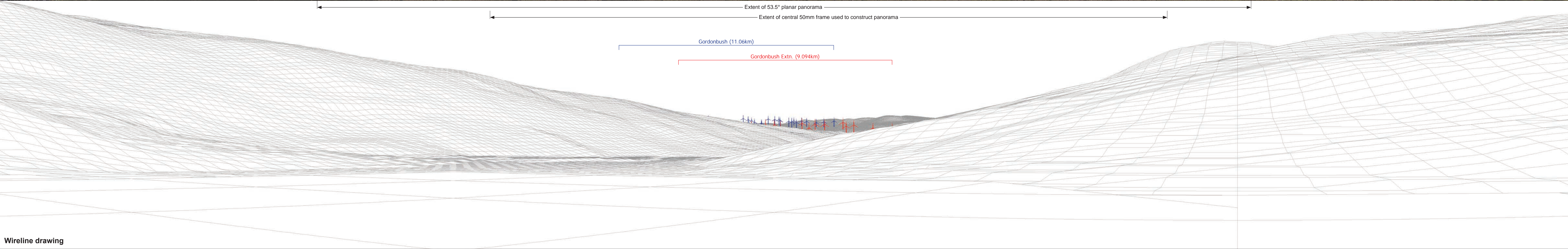


Figure: 7.23a
SNH VIEWPOINT 7: BRORA TO ROGART
MINOR ROAD NEAR DALREAVOCH
Gordonbush Extension Wind Farm
Environmental Statement



Baseline photograph

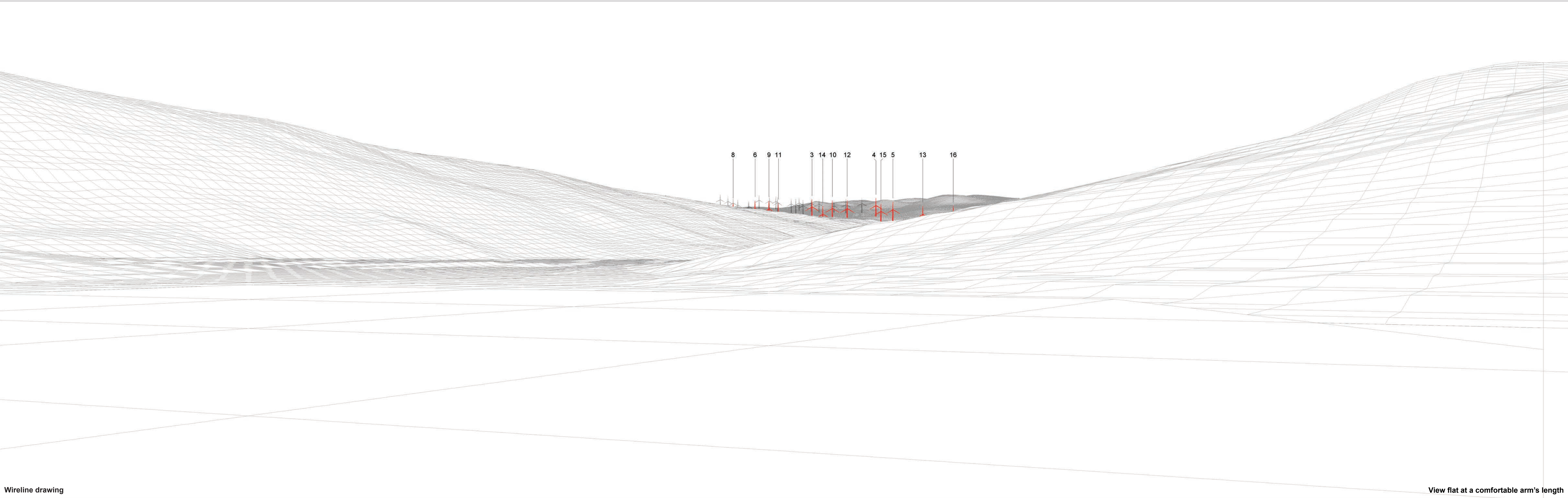
This image provides landscape and visual context only



Wireline drawing

OS reference:	275550 E 909090 N	Horizontal field of view:	90° (cylindrical projection)	Camera:	Canon EOS 5D Mk2
Eye level:	98.5 m AOD	Principal distance	522 mm	Lens:	50mm (Canon EF 50mm f/1.4)
Direction of view:	64°			Camera height:	1.5 m AGL
Nearest turbine:	9.094 km			Date and time:	24/07/2014, 18:07

Figure: 7.23b
SNH Viewpoint 7: Brora to Rogart minor road near Dalreavoch





Photomontage

View flat at a comfortable arm's length

OS reference:	275550 E 909090 N	Horizontal field of view:	53.5° (planar projection)	Camera:	Canon EOS 5D Mk2
Eye level:	98.5 m AOD	Principal distance	812.5 mm	Lens:	50mm (Canon EF 50mm f/1.4)
Direction of view:	64°	Paper size:	841 x 297 mm (half A1)	Camera height:	1.5 m AGL
Nearest turbine:	9.094 km	Correct printed image size:	820 x 260 mm	Date and time:	24/07/2014, 18:07

Figure: 7.23d
SNH Viewpoint 7: Brora to Rogart minor road near Dalreavoch