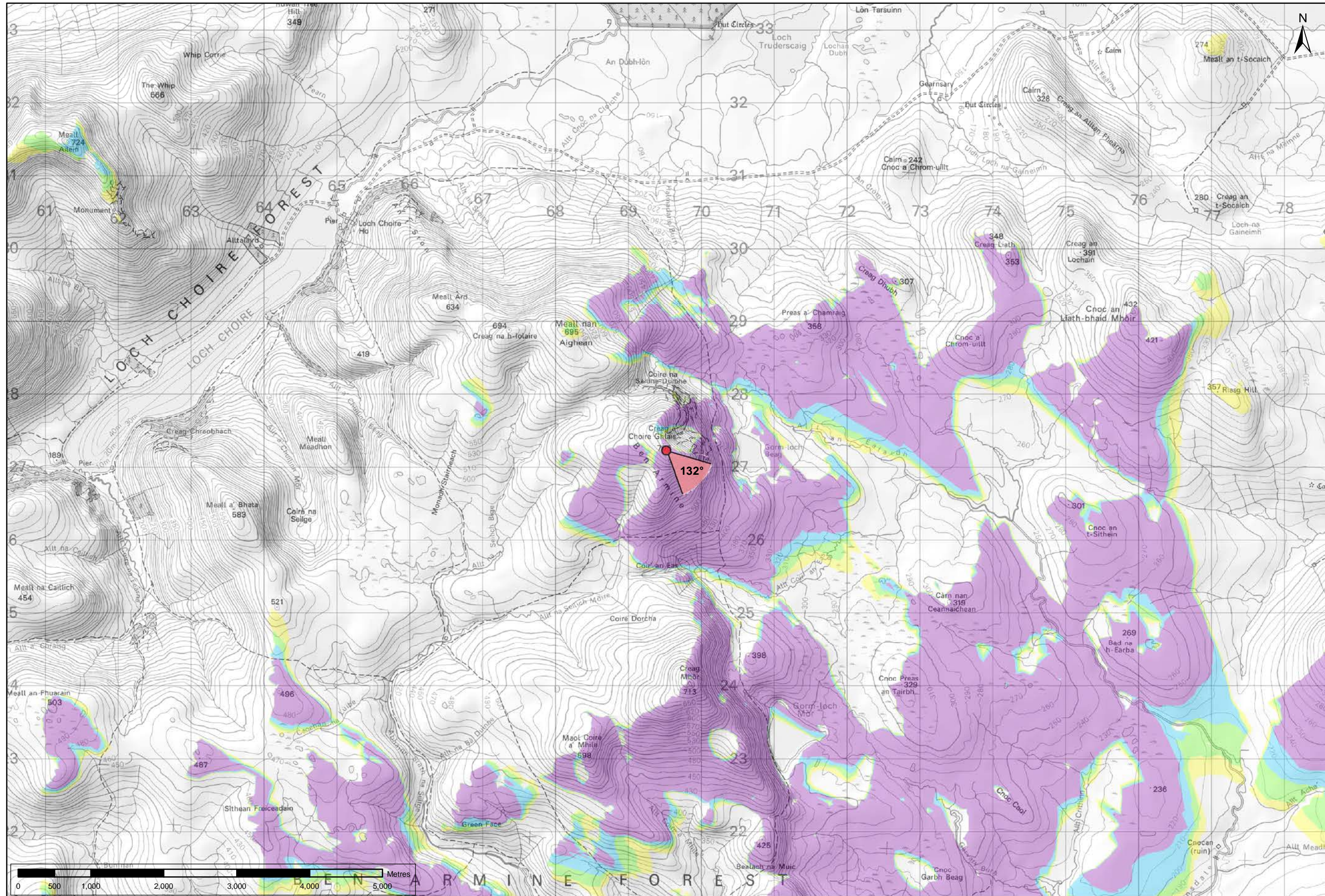



Viewpoint Location Plan Baseline Panorama
Scale: 1:150,000



Viewpoint Location Plan
Scale: 1:50,000 (Blade Tip ZTV)

Note:
1. ZTV: Created using ESRI ArcGIS 10.2.2 software using the following data and parameters:
Blade tip height: 115/130m
DTM Data: OS Terrain 5. Resampled to a 10m grid.
Observer height: 1.5m
No surface features, such as buildings or trees, were included in the analysis.
Earth curvature and light refraction has been included in calculations.
2. © Crown copyright and database rights 2015 Ordnance Survey 10034870.



optimised environments

Key

- Gordonbush Extension Turbine
- 90 degree field of view viewpoint
- 53.5 degree field of view viewpoint

Wind Farm Status (1:150,000 only):

- Turbine Locations
- Gordonbush Extension Site Boundary
- Operational
- Consented
- Application
- Scoping

Gordonbush Extension Blade Tip ZTV
No. of turbines that are theoretically visible

1 - 4
5 - 8
9 - 12
13 - 16

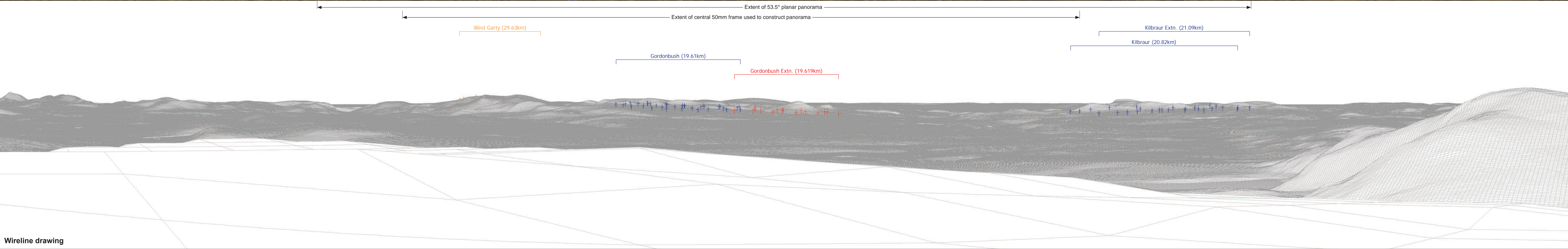
Figure: 7.31a
SNH VIEWPOINT 15:
BEN ARMINE

Gordonbush Extension Wind Farm
Environmental Statement



Baseline photograph

This image provides landscape and visual context only



Wireline drawing

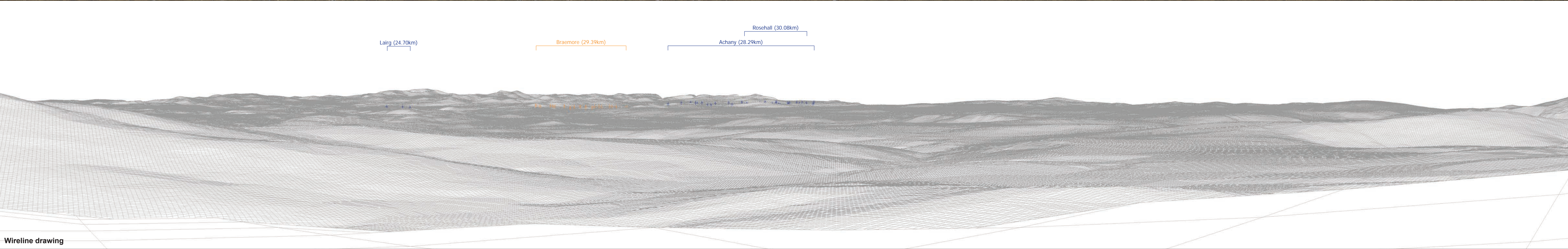
OS reference:	269522 E 927232 N	Horizontal field of view:	90° (cylindrical projection)	Camera:	Canon EOS 5D Mk2
Eye level:	702.5 m AOD	Principal distance	522 mm	Lens:	50mm (Canon EF 50mm f/1.4)
Direction of view:	132°			Camera height:	1.5 m AGL
Nearest turbine:	19.619 km			Date and time:	05/11/14, 12:28

Figure: 7.31b(i)
SNH Viewpoint 15: Ben Armine



Baseline photograph

This image provides landscape and visual context only



Wireline drawing

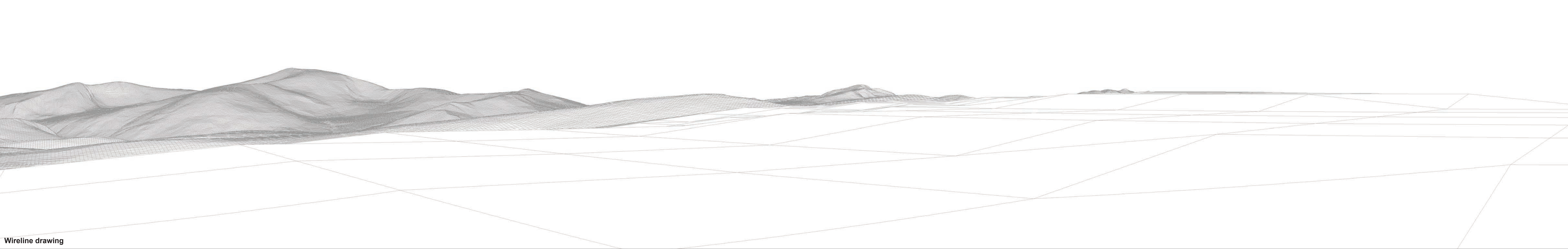
OS reference:	269522 E 927232 N	Horizontal field of view:	90° (cylindrical projection)	Camera:	Canon EOS 5D Mk2
Eye level:	702.5 m AOD	Principal distance	522 mm	Lens:	50mm (Canon EF 50mm f/1.4)
Direction of view:	222°			Camera height:	1.5 m AGL
Nearest turbine:	19.619 km			Date and time:	05/11/14, 12:28

Figure: 7.31b(ii)
SNH Viewpoint 15: Ben Armine



Baseline photograph

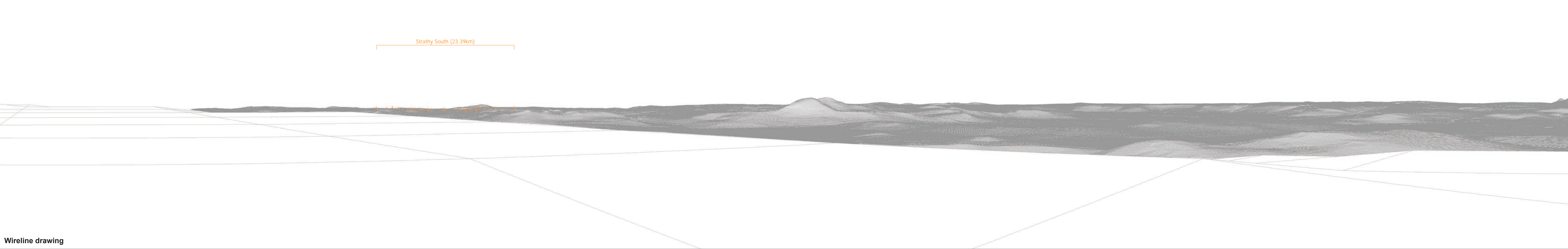
This image provides landscape and visual context only

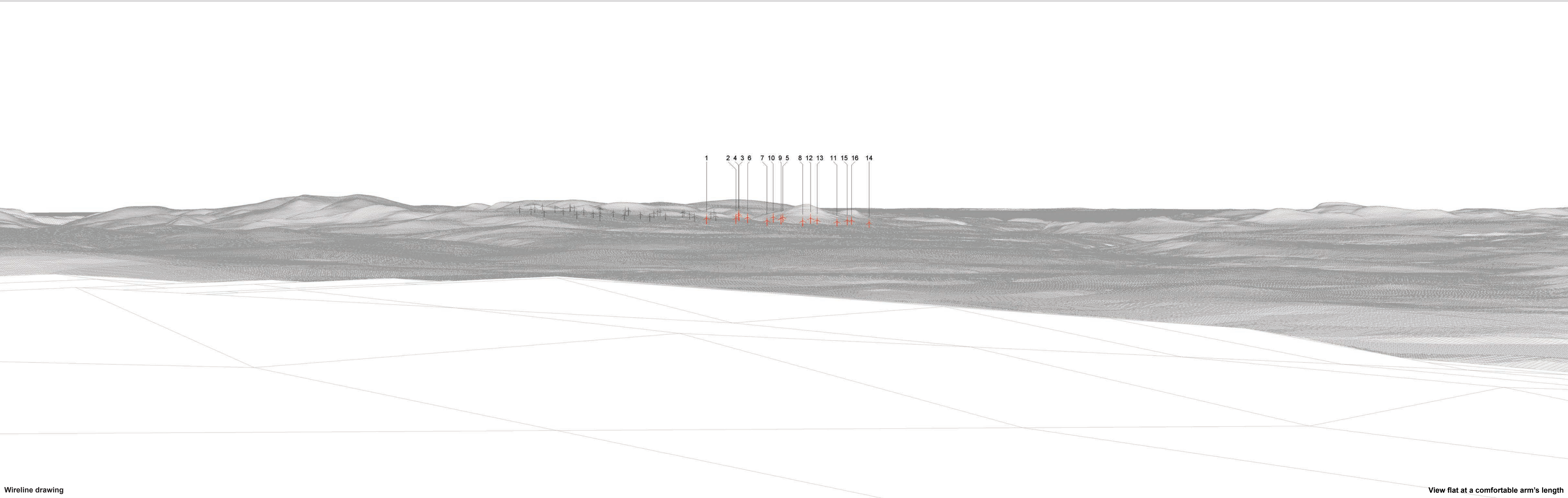


Wireline drawing

OS reference:	269522 E 927232 N	Horizontal field of view:	90° (cylindrical projection)	Camera:	Canon EOS 5D Mk2
Eye level:	702.5 m AOD	Principal distance	522 mm	Lens:	50mm (Canon EF 50mm f/1.4)
Direction of view:	312°			Camera height:	1.5 m AGL
Nearest turbine:	19.619 km			Date and time:	05/11/14, 12:28

Figure: 7.31b(iii)
SNH Viewpoint 15: Ben Armine





Wireline drawing

View flat at a comfortable arm's length

OS reference: 269522 E 927232 N		Horizontal field of view: 53.5° (planar projection)		Camera: Canon EOS 5D Mk2	
Eye level: 702.5 m AOD		Principal distance: 812.5 mm		Lens: 50mm (Canon EF 50mm f/1.4)	
Direction of view: 132°		Paper size: 841 x 297 mm (half A1)		Camera height: 1.5 m AGL	
Nearest turbine: 19.619 km		Correct printed image size: 820 x 260 mm		Date and time: 05/11/14, 12:28	

Figure: 7.31c
SNH Viewpoint 15: Ben Armine



Photomontage (Gordonbush Operational turbines have been montaged)

View flat at a comfortable arm's length

OS reference:	269522 E 927232 N	Horizontal field of view:	53.5° (planar projection)	Camera:	Canon EOS 5D Mk2
Eye level:	702.5 m AOD	Principal distance	812.5 mm	Lens:	50mm (Canon EF 50mm f/1.4)
Direction of view:	132°	Paper size:	841 x 297 mm (half A1)	Camera height:	1.5 m AGL
Nearest turbine:	19.619 km	Correct printed image size:	820 x 260 mm	Date and time:	05/11/14, 12:28

Figure: 7.31d
SNH Viewpoint 15: Ben Armine