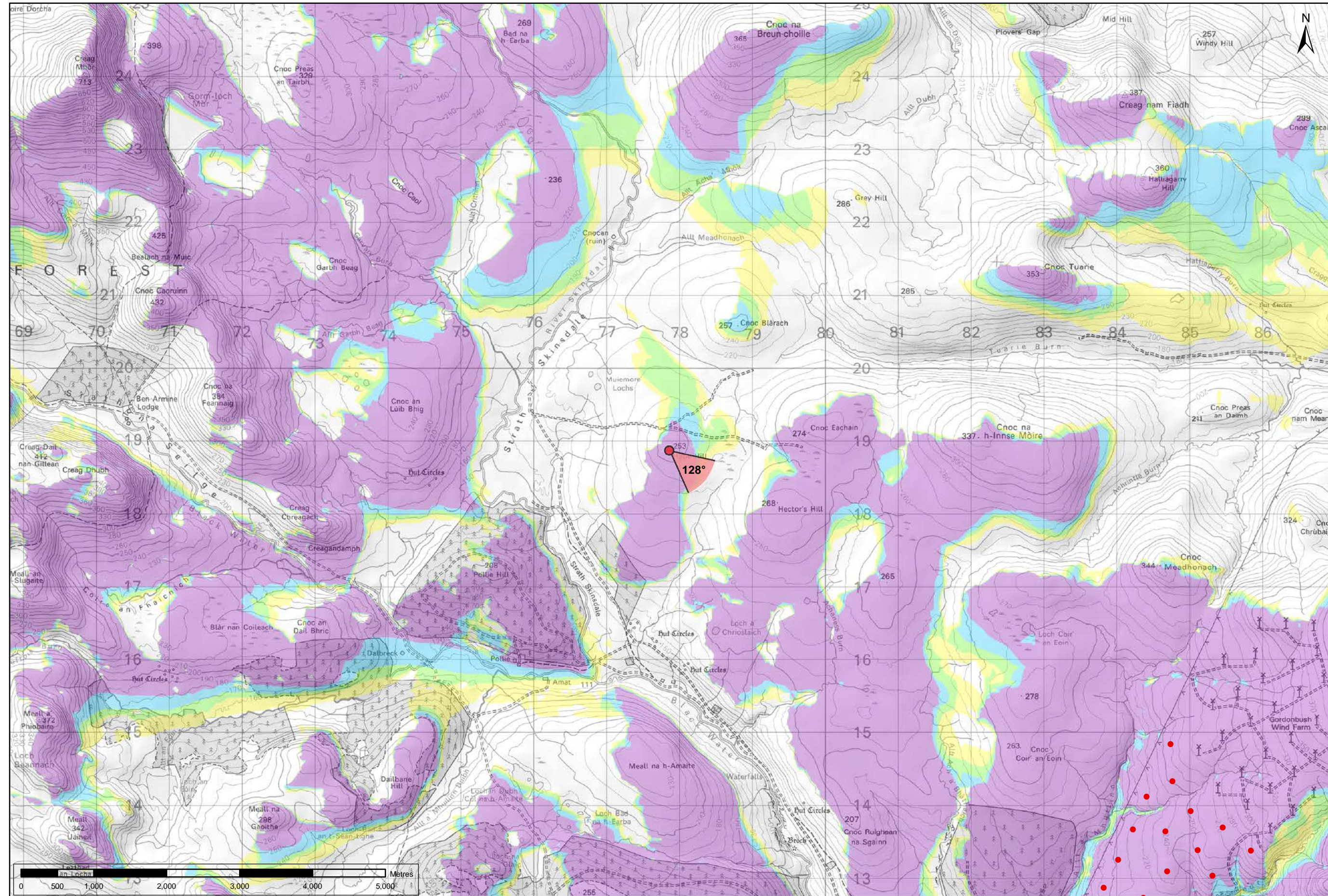


Viewpoint Location Plan Baseline Panorama
Scale: 1:150,000



Viewpoint Location Plan
Scale: 1:50,000 (Blade Tip ZTV)

Note:
1. ZTV: Created using ESRI ArcGIS 10.2.2 software using the following data and parameters:
Blade tip height: 115/130m
DTM Data: OS Terrain 5. Resampled to a 10m grid.
Observer height: 1.5m
No surface features, such as buildings or trees, were included in the analysis.
Earth curvature and light refraction has been included in calculations.
2. © Crown copyright and database rights 2015 Ordnance Survey 10034870.

Key

- Gordonbush Extension Turbine
- ◀ 90 degree field of view viewpoint
- ◀ 53.5 degree field of view viewpoint

Wind Farm Status (1:150,000 only):

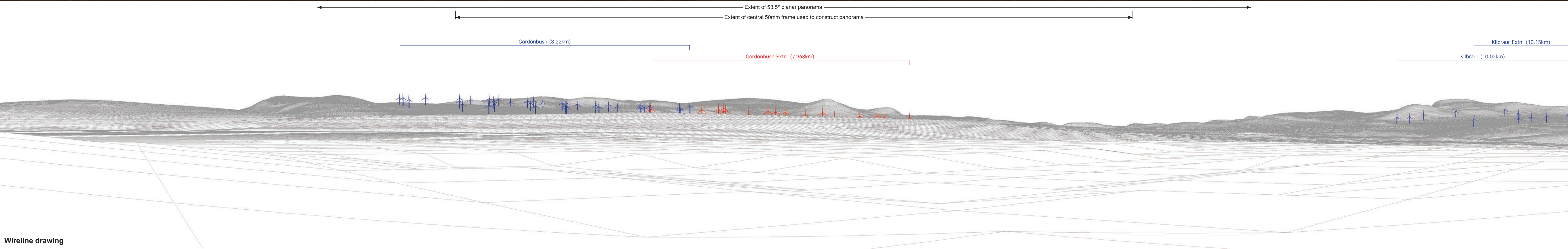
- Turbine Locations
- ◀ Gordonbush Extension Site Boundary
- ◀ Operational
- ◀ Consented
- ◀ Application
- ◀ Scoping

Gordonbush Extension Blade Tip ZTV

No. of turbines that are theoretically visible

- ◀ 1 - 4
- ◀ 5 - 8
- ◀ 9 - 12
- ◀ 13 - 16

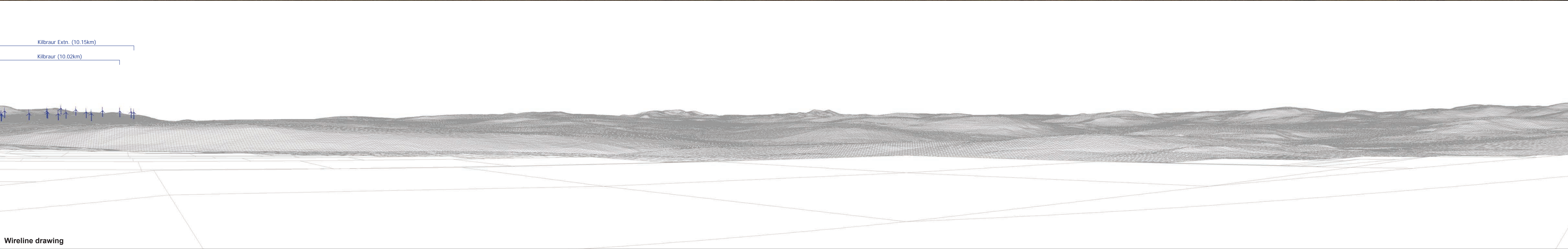
Figure: 7.27a
SNH VIEWPOINT 11:
HOPE HILL





Baseline photograph

This image provides landscape and visual context only



Wireline drawing

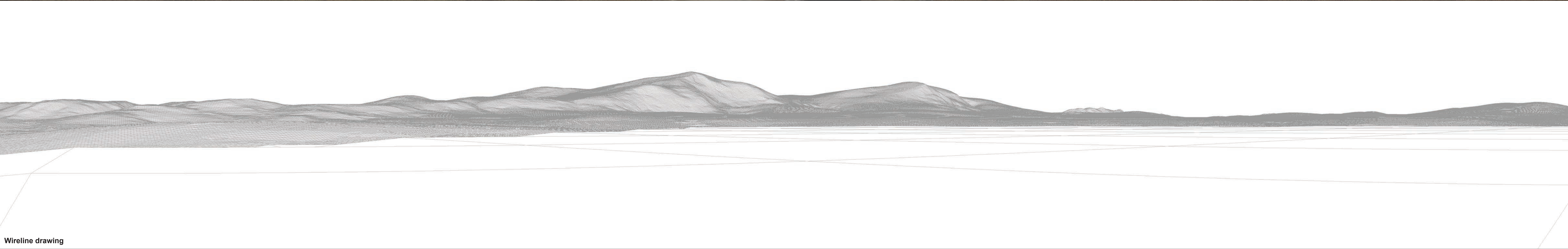
OS reference:	277861 E 918871 N	Horizontal field of view:	90° (cylindrical projection)	Camera:	Canon EOS 5D Mk2
Eye level:	253.5 m AOD	Principal distance	522 mm	Lens:	50mm (Canon EF 50mm f/1.4)
Direction of view:	218°			Camera height:	1.5 m AGL
Nearest turbine:	7.968 km			Date and time:	31/08/2014 10:53

Figure: 7.27b(ii)
SNH Viewpoint 11: Hope Hill



Baseline photograph

This image provides landscape and visual context only



Wireline drawing

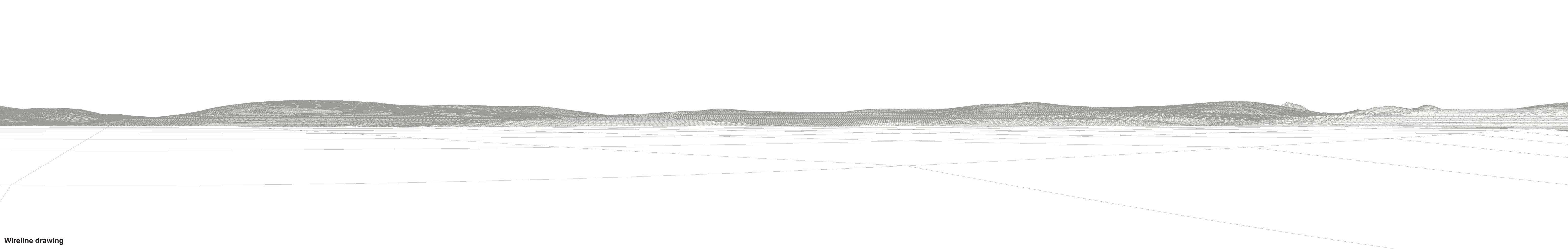
OS reference:	277861 E 918871 N	Horizontal field of view:	90° (cylindrical projection)	Camera:	Canon EOS 5D Mk2
Eye level:	253.5 m AOD	Principal distance	522 mm	Lens:	50mm (Canon EF 50mm f/1.4)
Direction of view:	308°			Camera height:	1.5 m AGL
Nearest turbine:	7.968 km			Date and time:	31/08/2014 10:53

Figure: 7.27b(iii)
SNH Viewpoint 11: Hope Hill



Baseline photograph

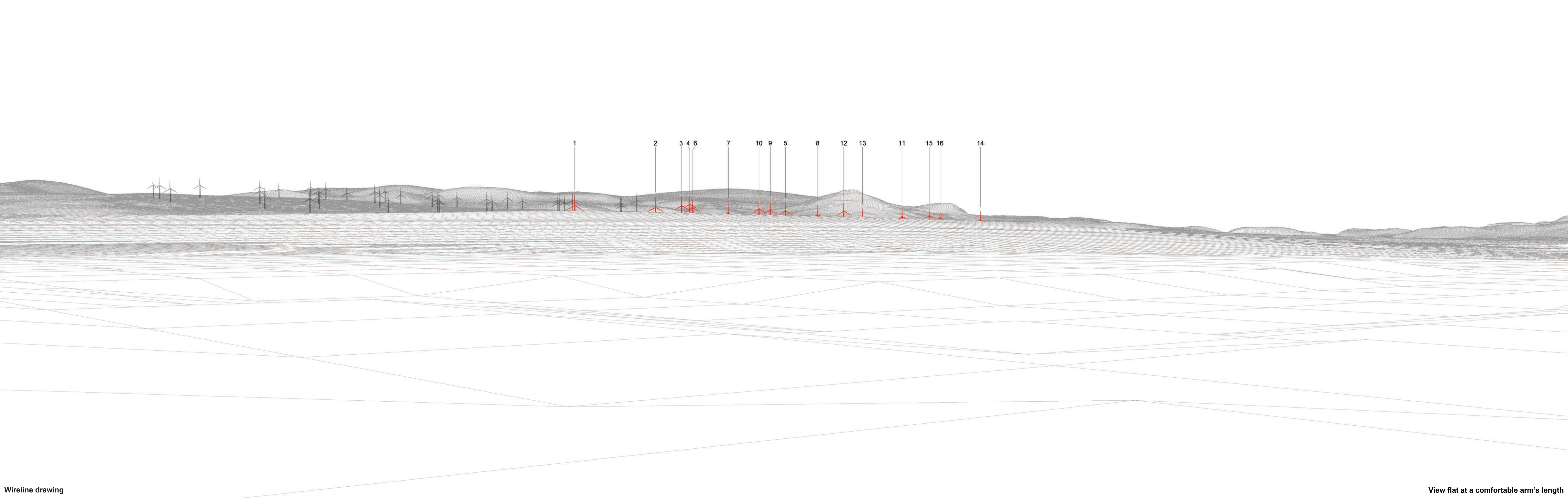
This image provides landscape and visual context only



Wireline drawing

OS reference:	277861 E 918871 N	Horizontal field of view:	90° (cylindrical projection)	Camera:	Canon EOS 5D Mk2
Eye level:	253.5 m AOD	Principal distance	522 mm	Lens:	50mm (Canon EF 50mm f/1.4)
Direction of view:	38°			Camera height:	1.5 m AGL
Nearest turbine:	7.968 km			Date and time:	31/08/2014 10:53

Figure: 7.27b(iiii)
SNH Viewpoint 11: Hope Hill



Wireline drawing

View flat at a comfortable arm's length

OS reference:	277861 E 918871 N	Horizontal field of view:	53.5° (planar projection)	Camera:	Canon EOS 5D Mk2
Eye level:	253.5 m AOD	Principal distance:	812.5 mm	Lens:	50mm (Canon EF 50mm f/1.4)
Direction of view:	128°	Paper size:	841 x 297 mm (half A1)	Camera height:	1.5 m AGL
Nearest turbine:	7.968 km	Correct printed image size:	820 x 260 mm	Date and time:	31/08/2014 10:53

Figure: 7.27c
SNH Viewpoint 11: Hope Hill



Photomontage

View flat at a comfortable arm's length

OS reference:	277861 E 918871 N	Horizontal field of view:	53.5° (planar projection)	Camera:	Canon EOS 5D Mk2
Eye level:	253.5 m AOD	Principal distance	812.5 mm	Lens:	50mm (Canon EF 50mm f/1.4)
Direction of view:	128°	Paper size:	841 x 297 mm (half A1)	Camera height:	1.5 m AGL
Nearest turbine:	7.968 km	Correct printed image size:	820 x 260 mm	Date and time:	31/08/2014 10:53

Figure: 7.27d
SNH Viewpoint 11: Hope Hill