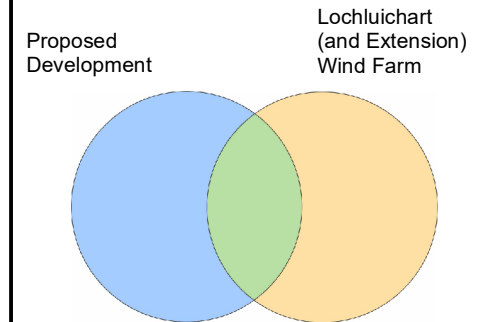


- Proposed Turbine
- Operational Turbine
- ▭ 40km Wider Study Area
- ▭ 20km Detailed Study Area
- ▭ 5km Distance Radii

Zone of Theoretical Visibility:
Wind Farm Development Theoretically Visible



Note: Due to gaps in the terrain data, theoretical visibility is not shown over all areas of sea

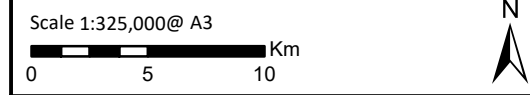
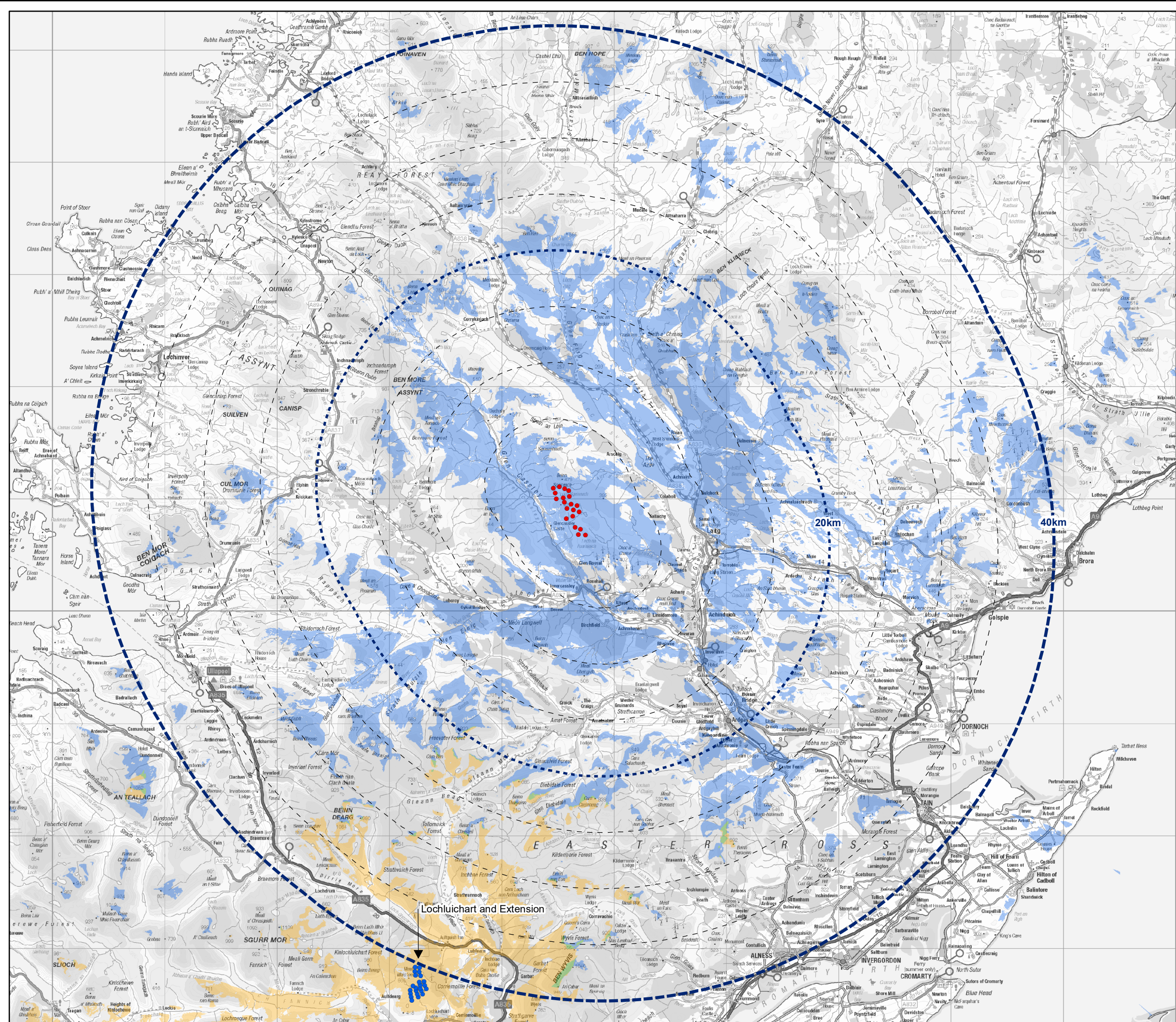


Figure 7.8.14
Cumulative ZTV - Proposed Development
with Lochluichart and Extension

**Achany Extension Wind Farm
EIA Report**