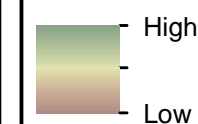


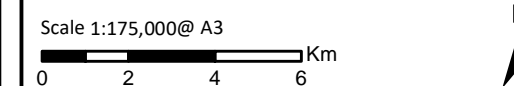
Key

- Site Boundary
- 40km Wider Study Area
- 20km Detailed Study Area
- 5 km Buffer
- Proposed Turbine
- Operational Turbine
- Consented Turbine
- Wild Land Area (WLA) 34: Reay - Cassley
- Other WLA
- WLA Sub-Section Divider
- ★ Assessment Location
- Access Route to Assessment Location

Map of Relative Wildness

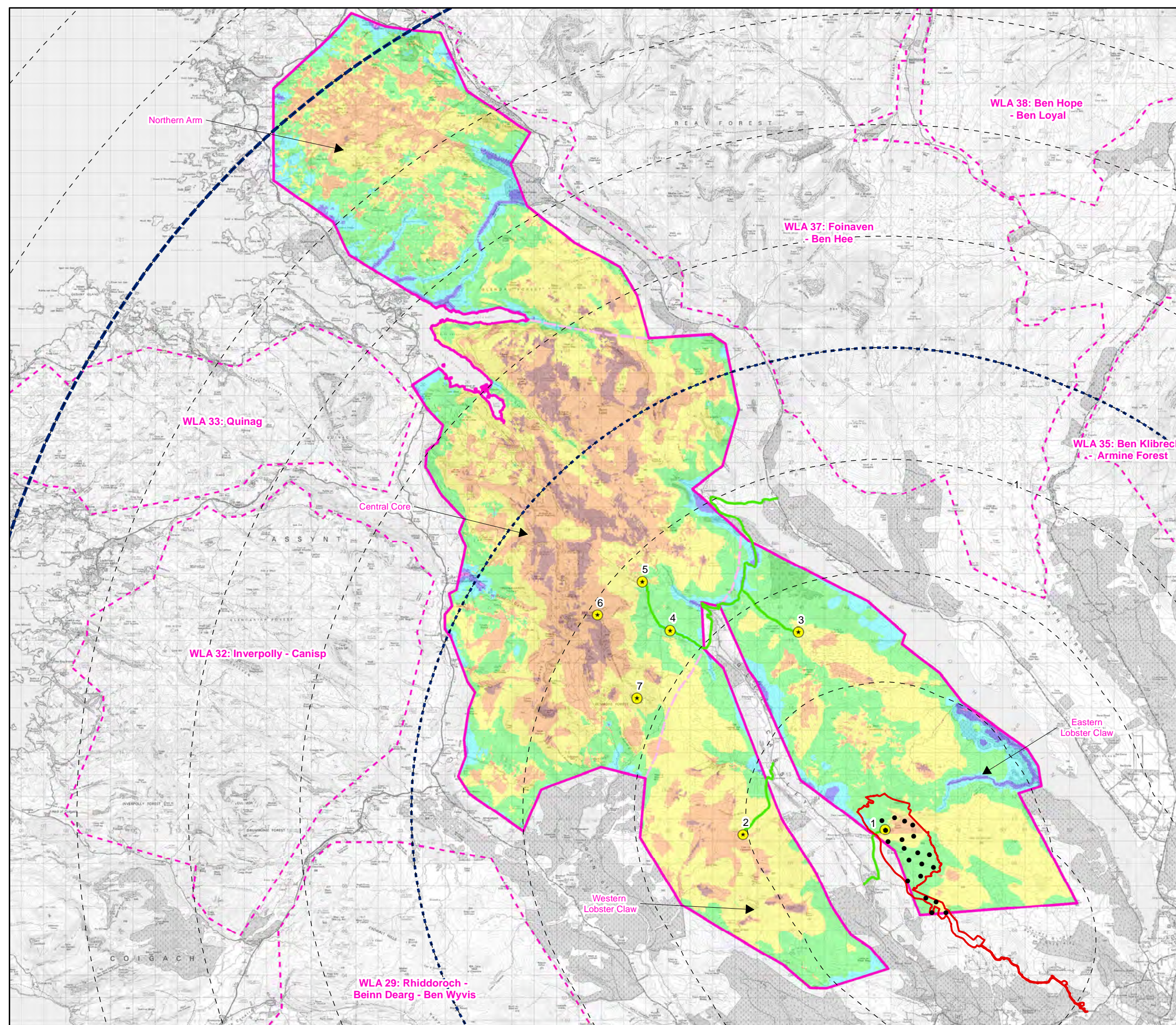


Map of relative wildness GIS information obtained from NatureScot Natural Spaces website: <http://gateway.snh.gov.uk/natural-spaces/index.jsp>



TA 7.5 Figure 1
Map of Relative Wildness (WLA 34)

Achany Extension Wind Farm
EIA Report



- Site Boundary
 - 40km Wider Study
 - 20km Detailed Study
 - 5 km Buffer
 - Proposed Turbine
 - Wild Land Area (WLA) 34: Reay - Cassley
 - Other WLA
 - WLA Sub-Section Divider
 - Assessment Location
 - Access Route to Assessment Location
- Jenks 8 Classification
- Class 1
 - Class 2
 - Class 3
 - Class 4
 - Class 5
 - Class 6
 - Class 7
 - Class 8

Map of relative wildness GIS information obtained from NatureScot Natural Spaces website: <http://gateway.snh.gov.uk/natural-spaces/index.jsp>

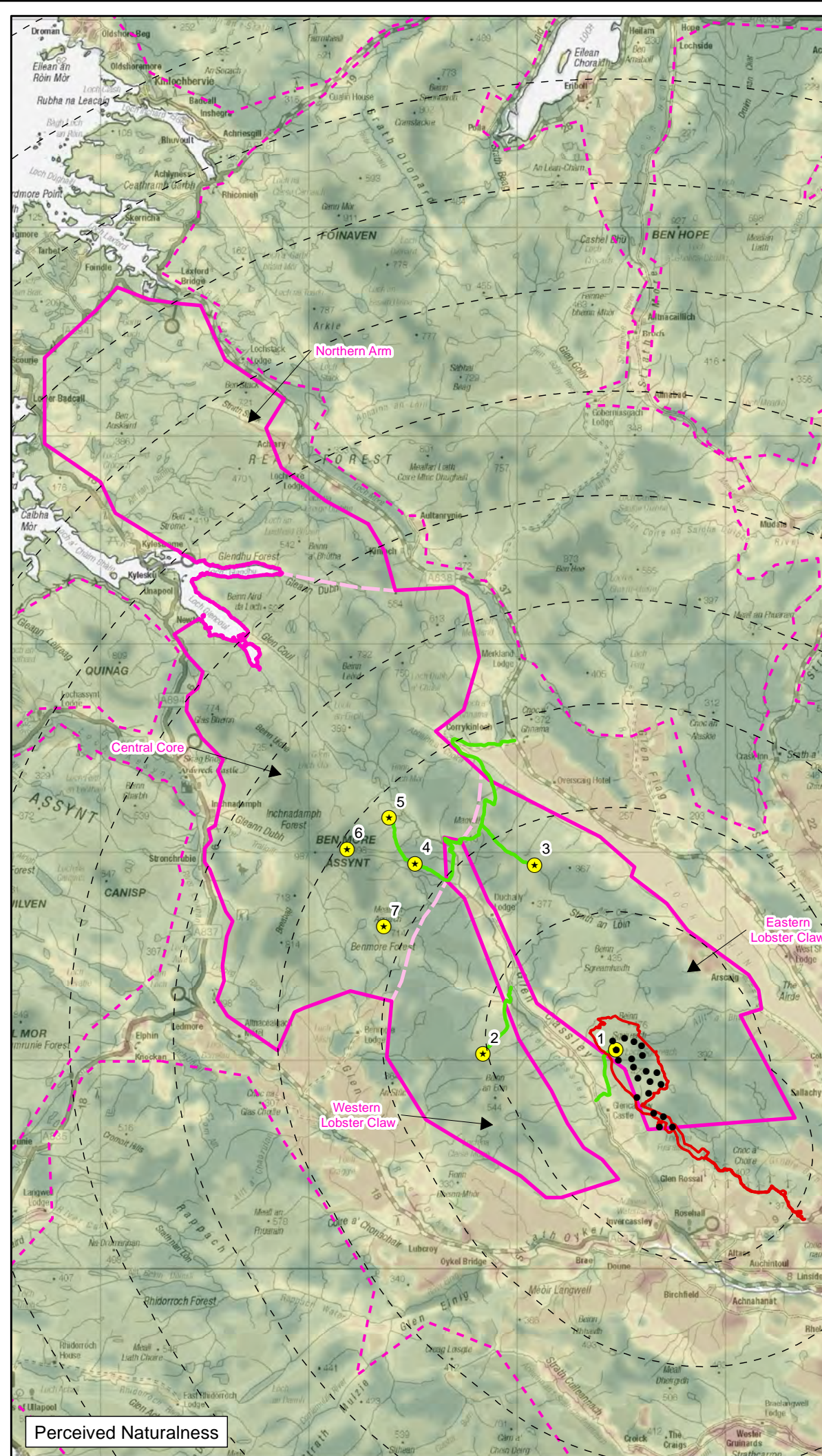
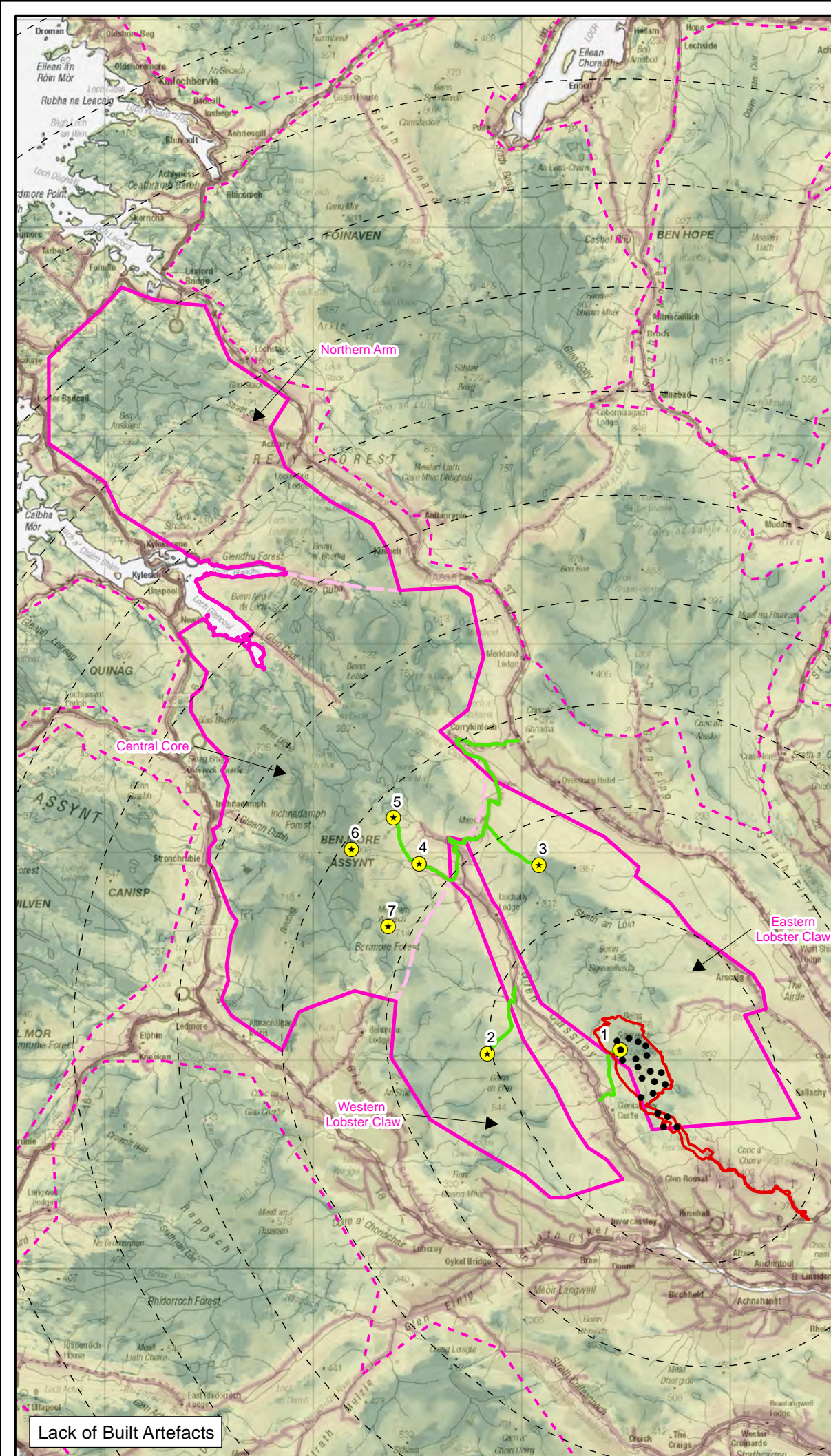
Scale 1:165,000@ A3

0 2 4 6 Km

N

TA 7.5 Figure 2
Map of Relative Wildness:
Jenks 8 Interpretation (WLA 34)

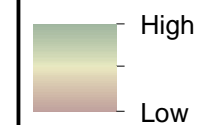
Achany Extension Wind Farm
EIA Report



Key

- Site Boundary
- 5 km Buffer
- Proposed Turbine
- Wild Land Area (WLA) 34: Reay - Cassley
- Other WLA
- WLA Sub-Section Divider
- Assessment Location
- Access Route to Assessment Location

Strength of Attributes



Map of relative wildness GIS information obtained from NatureScot Natural Spaces website:
<http://gateway.snh.gov.uk/natural-spaces/index.jsp>

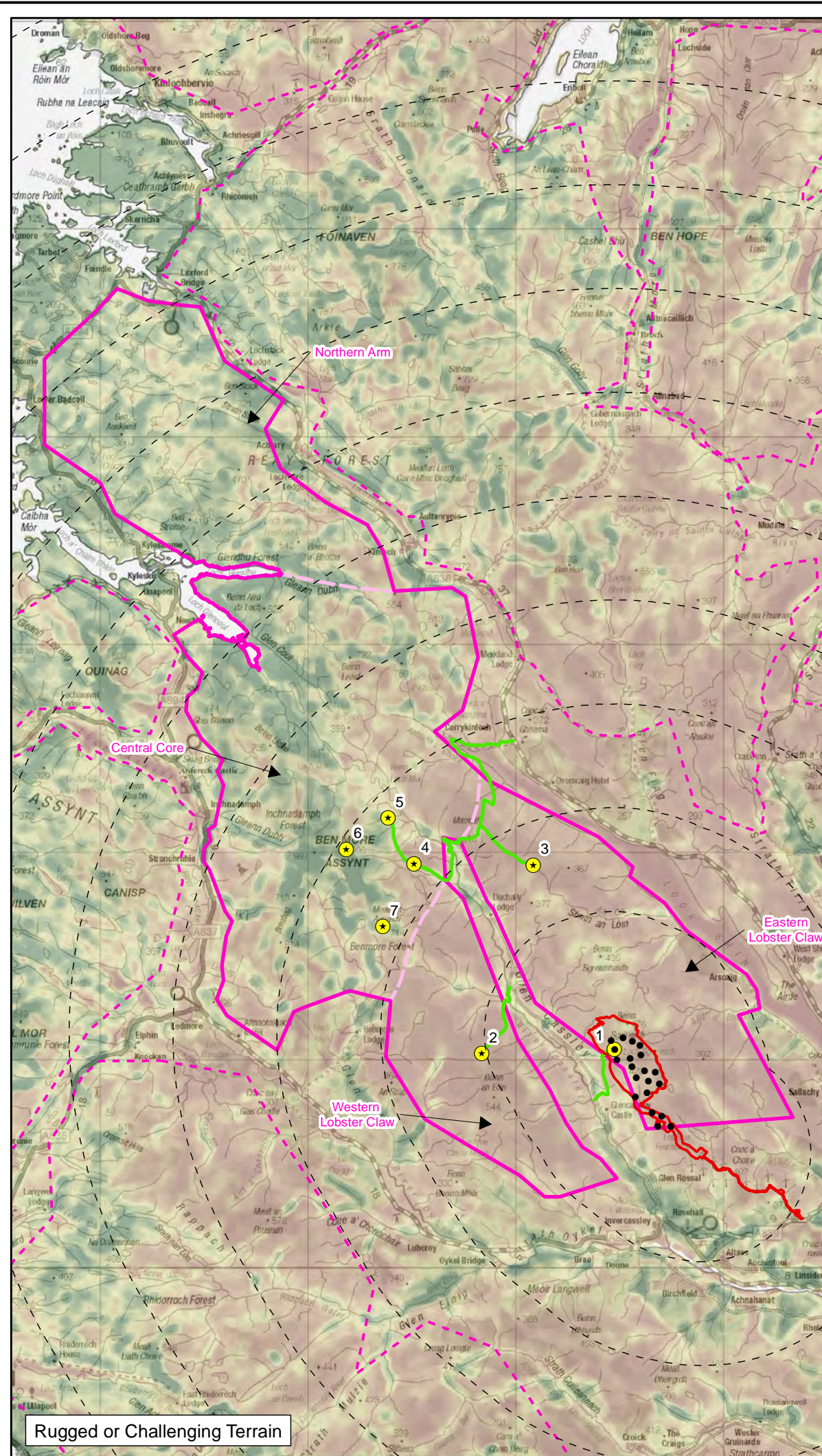
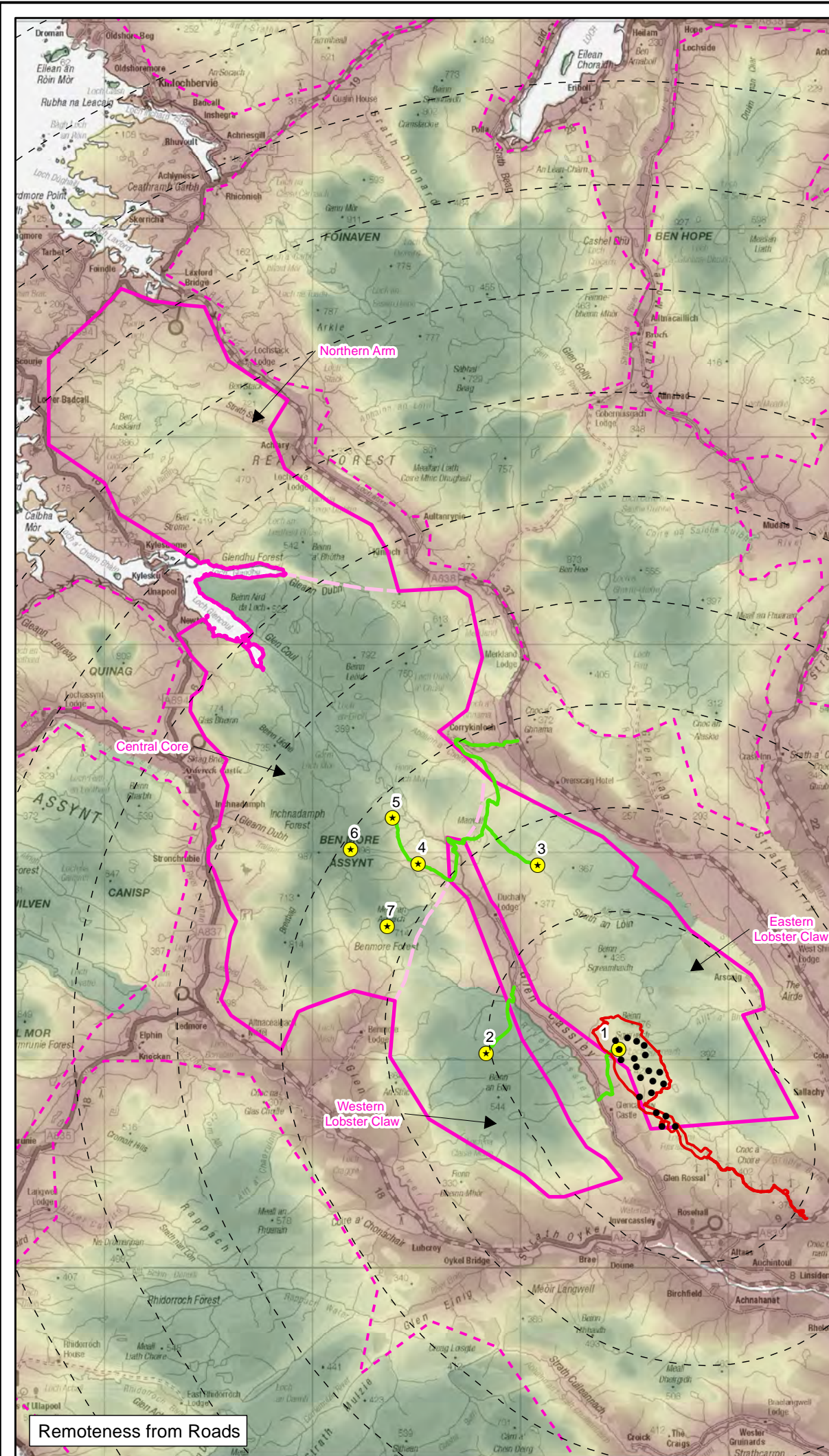
Scale 1:250,000@ A3

0 2 4 6 Km



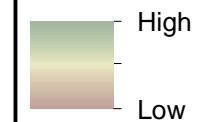
TA 7.5 Figure 3.1
Wild Land Attribute Mapping
(WLA 34)

Achany Extension Wind Farm
EIA Report



- Site Boundary
- 5 km Buffer
- Proposed Turbine
- Wild Land Area (WLA) 34: Reay-Cassley
- Other WLA
- WLA Sub-Section Divider
- ★ Assessment Location
- Access Route to Assessment Location

Strength of Attributes



Map of relative wildness GIS information obtained from NatureScot Natural Spaces website:
<http://gateway.snh.gov.uk/natural-spaces/index.jsp>

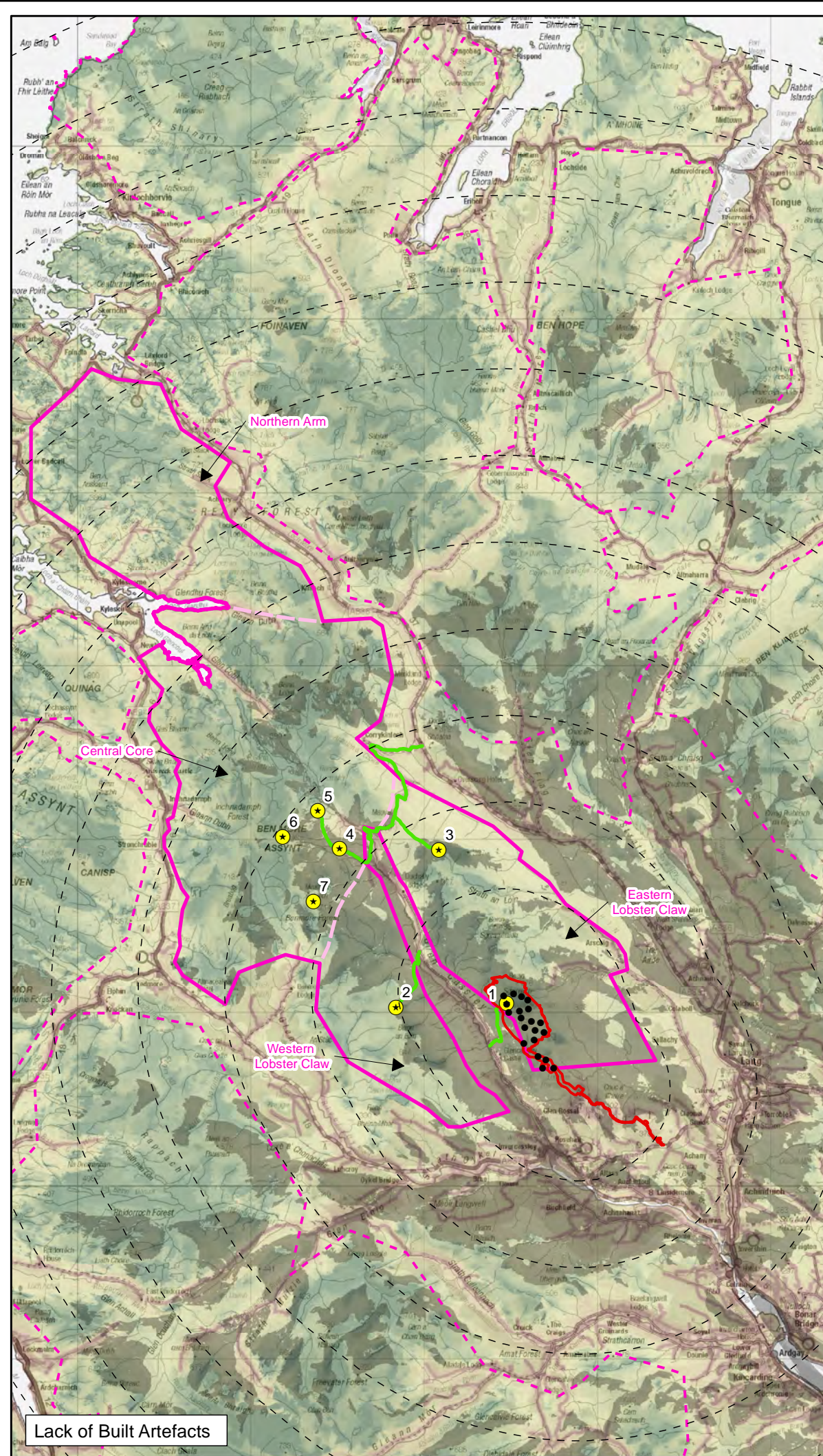
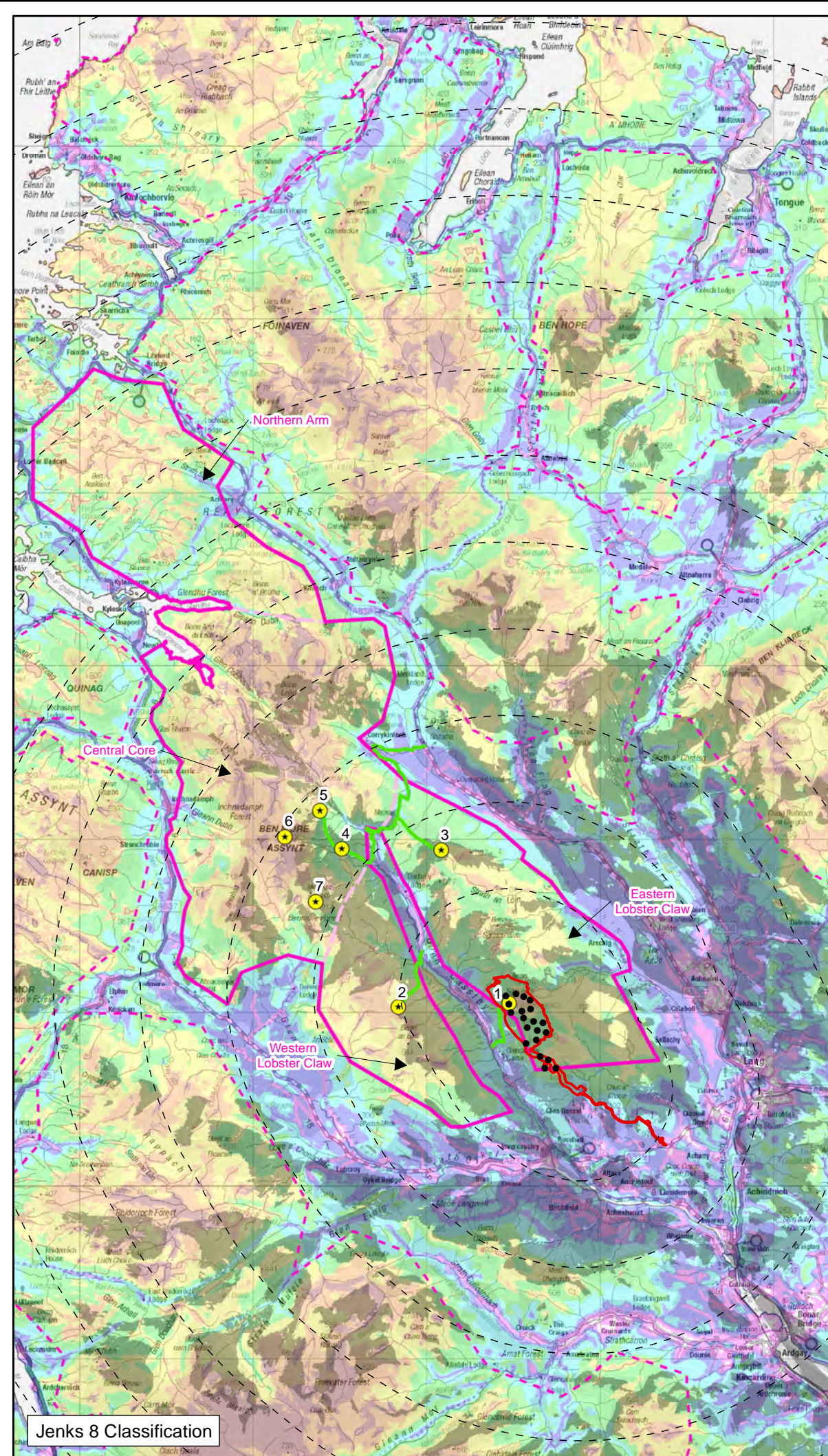
Scale 1:250,000@ A3

0 2 4 6 Km



TA 7.5 Figure 3.2
Wild Land Attribute Mapping
(WLA 34)

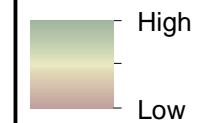
Achany Extension Wind Farm
EIA Report



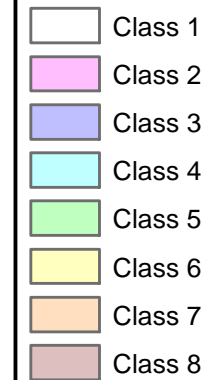
- Site Boundary
- 5 km Buffer
- Proposed Turbine
- Wild Land Area (WLA) 34: Reay - Cassley
- Other WLA
- WLA Sub-Section Divider
- Assessment Location
- Access Route to Assessment Location
- Zone of Theoretical Visibility (ZTV)

Note: the ZTV will show as different shades where overlaid on the Jenks 8 or Attribute Mapping.

Lack of Built Artefacts



Jenks 8 Classification



Map of relative wildness GIS information obtained from NatureScot Natural Spaces website:
<http://gateway.snh.gov.uk/natural-spaces/index.jsp>

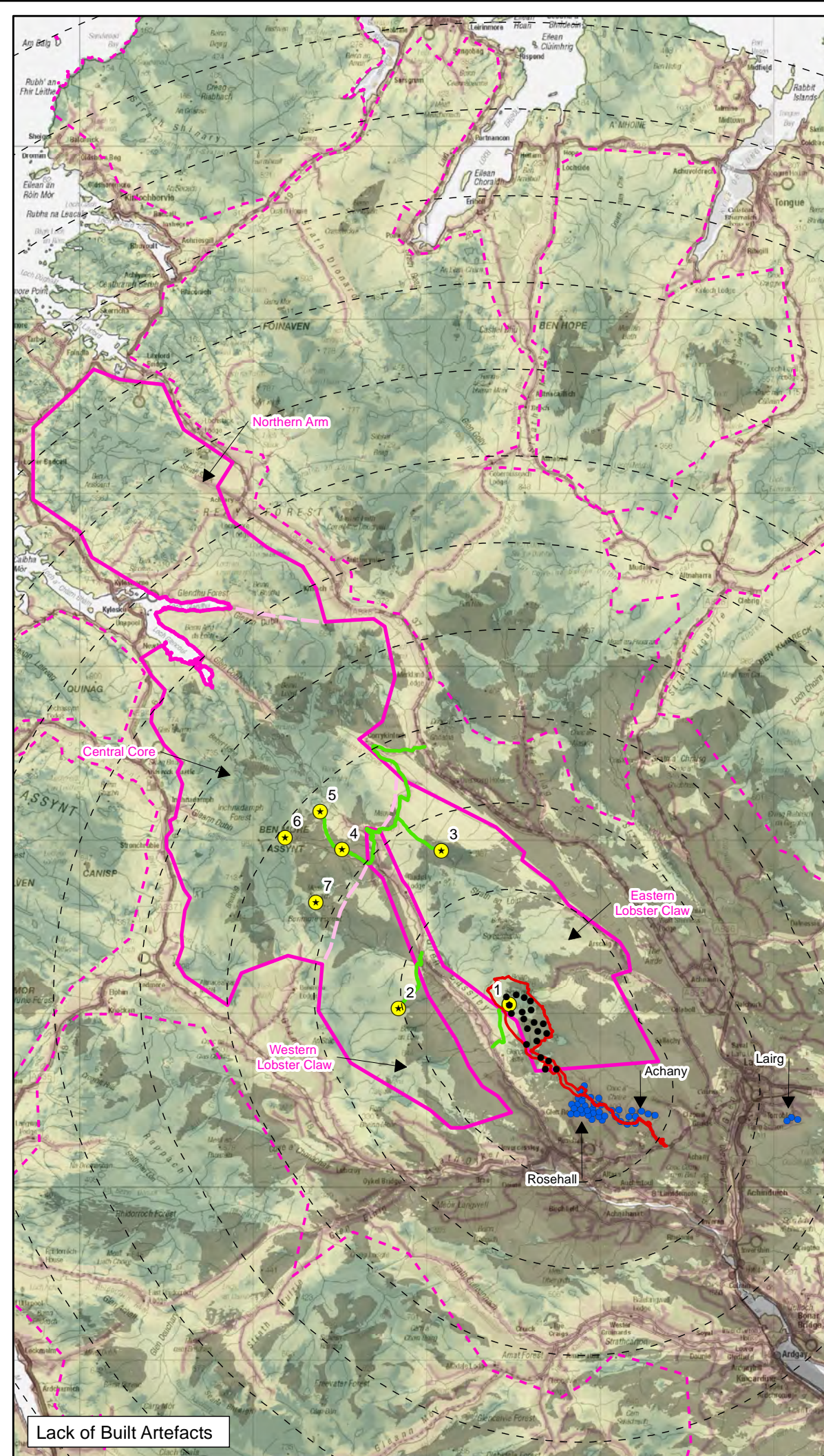
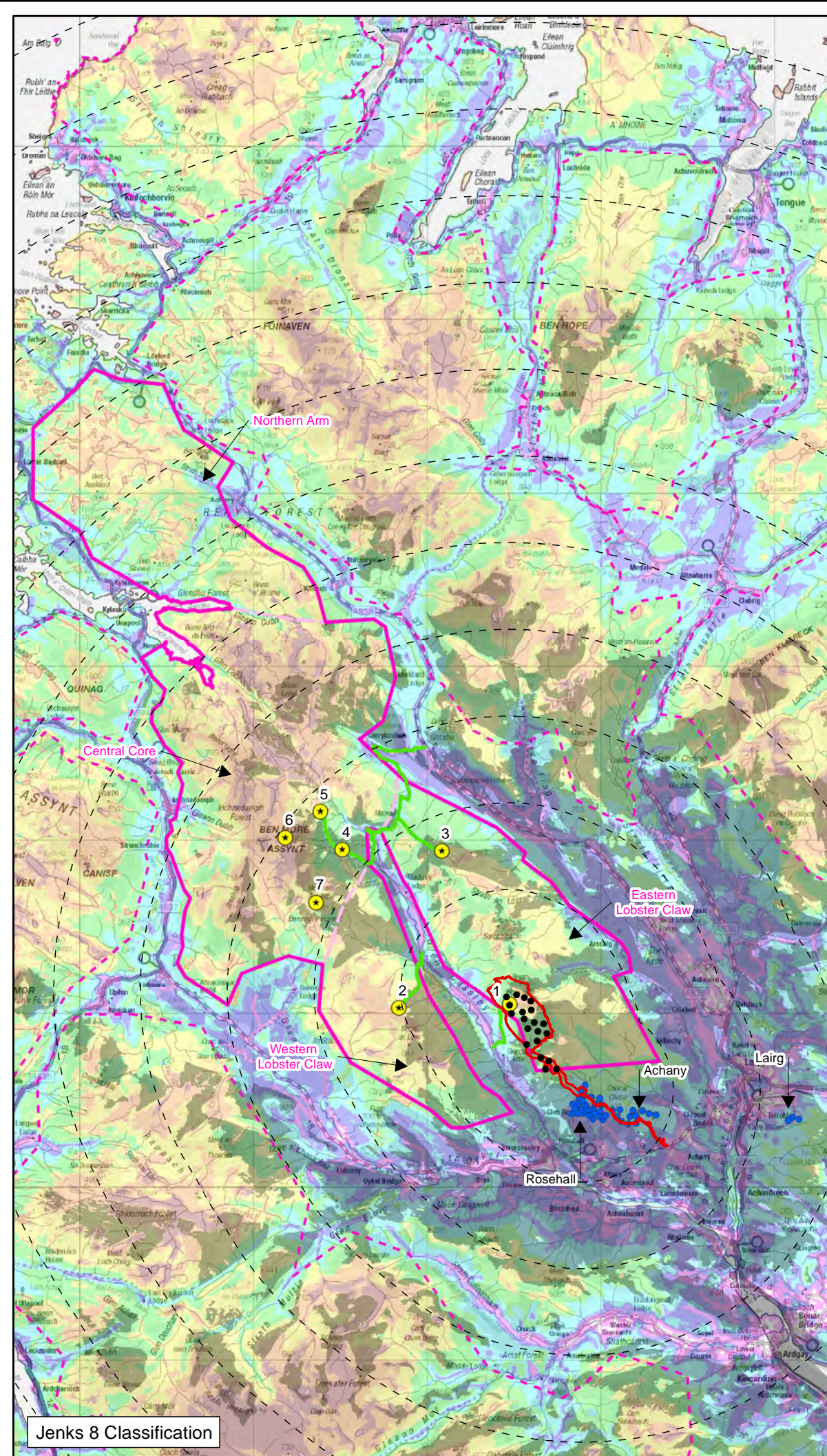
Scale 1:300,000@ A3

0 2 4 6 Km



TA 7.5 Figure 4
ZTV Overview (WLA 34):
Proposed Development

Achany Extension Wind Farm
EIA Report

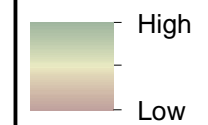


Key

- Site Boundary
- 5 km Buffer
- Proposed Turbine
- Operational Turbine
- Wild Land Area (WLA) 34: Reay - Cassley
- Other WLA
- WLA Sub-Section Divider
- ★ Assessment Location
- Access Route to Assessment Location
- Zone of Theoretical Visibility (ZTV) for Achany, Rosehall and Lairg

Note: the ZTV will show as different shades where overlaid on the Jenks 8 or Attribute Mapping.

Lack of Built Artefacts



Jenks 8 Classification

- Class 1
- Class 2
- Class 3
- Class 4
- Class 5
- Class 6
- Class 7
- Class 8

Map of relative wildness GIS information obtained from NatureScot Natural Spaces website:
<http://gateway.snh.gov.uk/natural-spaces/index.jsp>

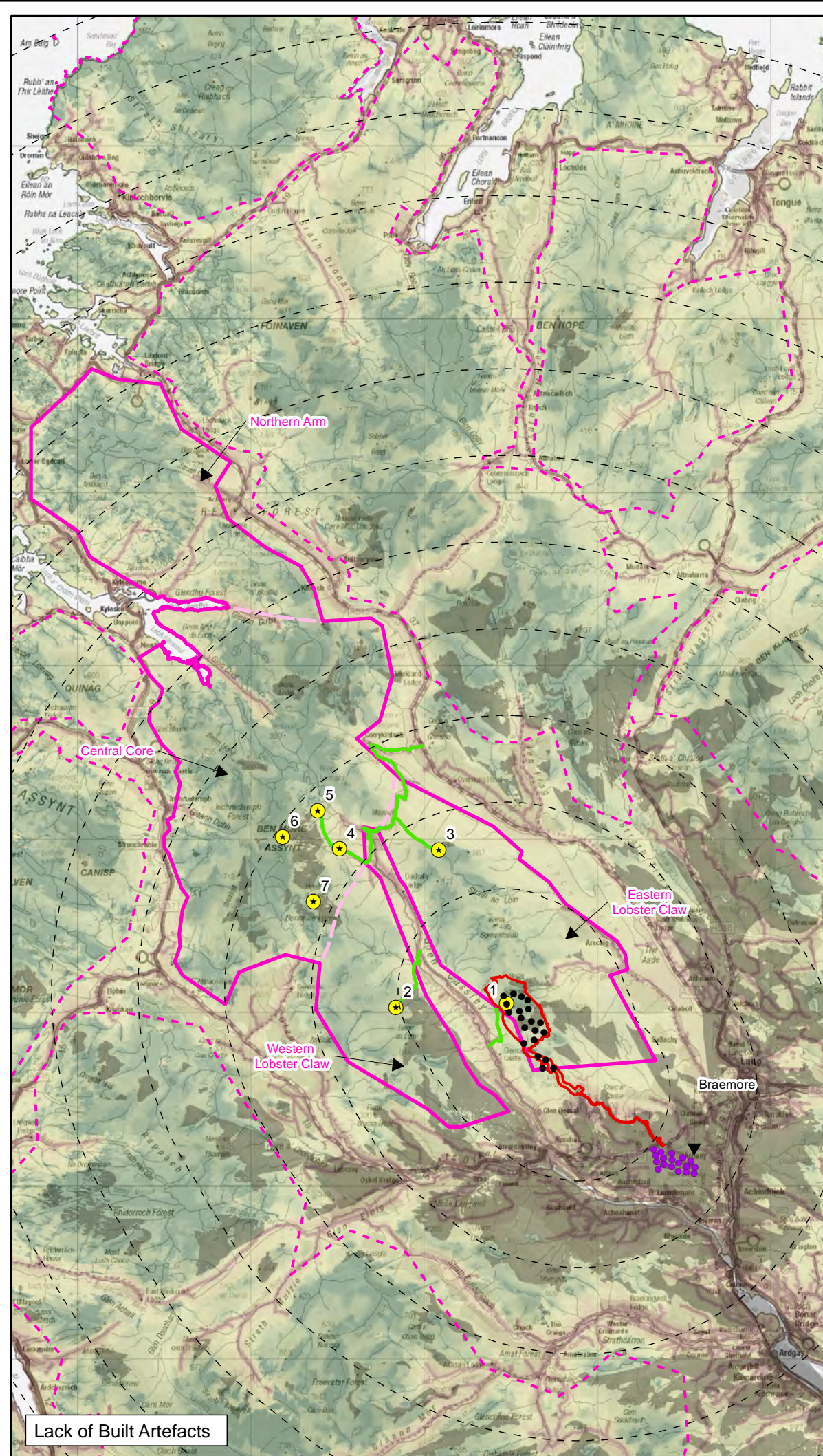
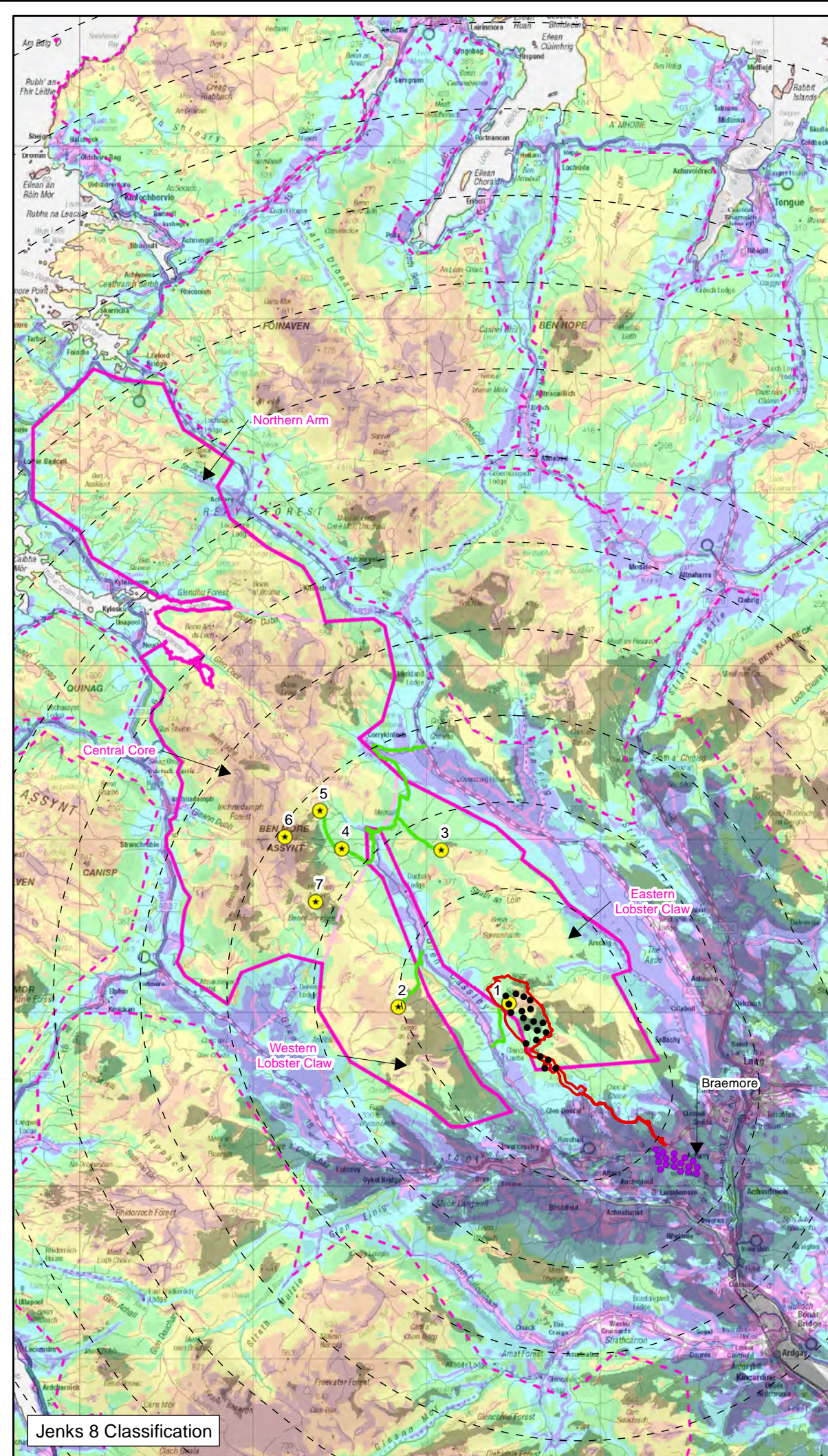
Scale 1:300,000@ A3

0 2 4 6 Km



TA 7.5 Figure 5
ZTV Overview (WLA 34):
Existing Wind Farms within 10km

Achany Extension Wind Farm
EIA Report

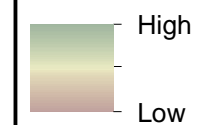


Key

- Site Boundary
- 5 km Buffer
- Proposed Turbine
- Consented Turbine
- Wild Land Area (WLA) 34: Reay - Cassley
- Other WLA
- WLA Sub-Section Divider
- ★ Assessment Location
- Access Route to Assessment Location
- Zone of Theoretical Visibility (ZTV)

Note: the ZTV will show as different shades where overlaid on the Jenks 8 or Attribute Mapping.

Lack of Built Artefacts



Jenks 8 Classification

- Class 1
- Class 2
- Class 3
- Class 4
- Class 5
- Class 6
- Class 7
- Class 8

Map of relative wildness GIS information obtained from NatureScot Natural Spaces website:
<http://gateway.snh.gov.uk/natural-spaces/index.jsp>

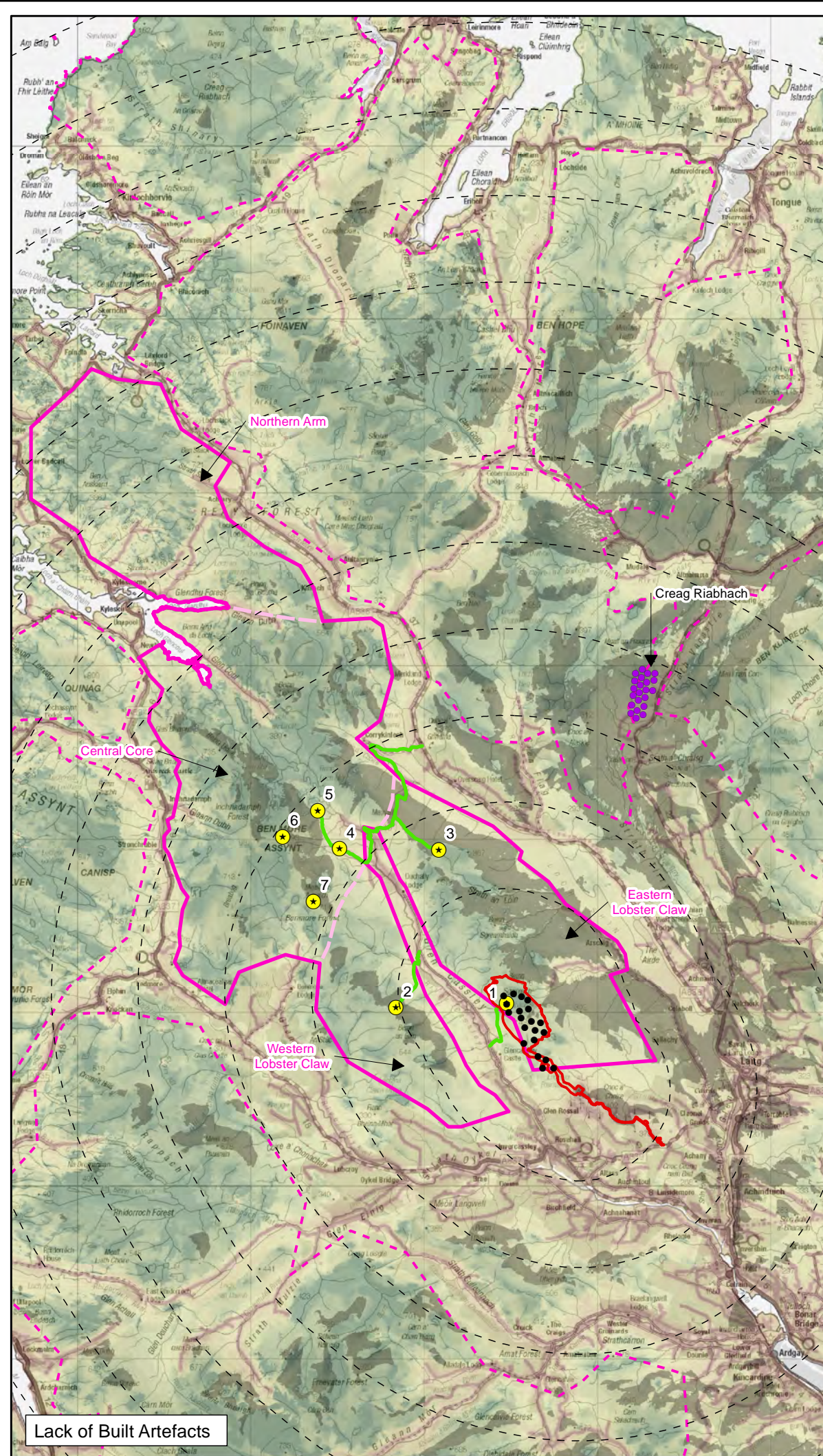
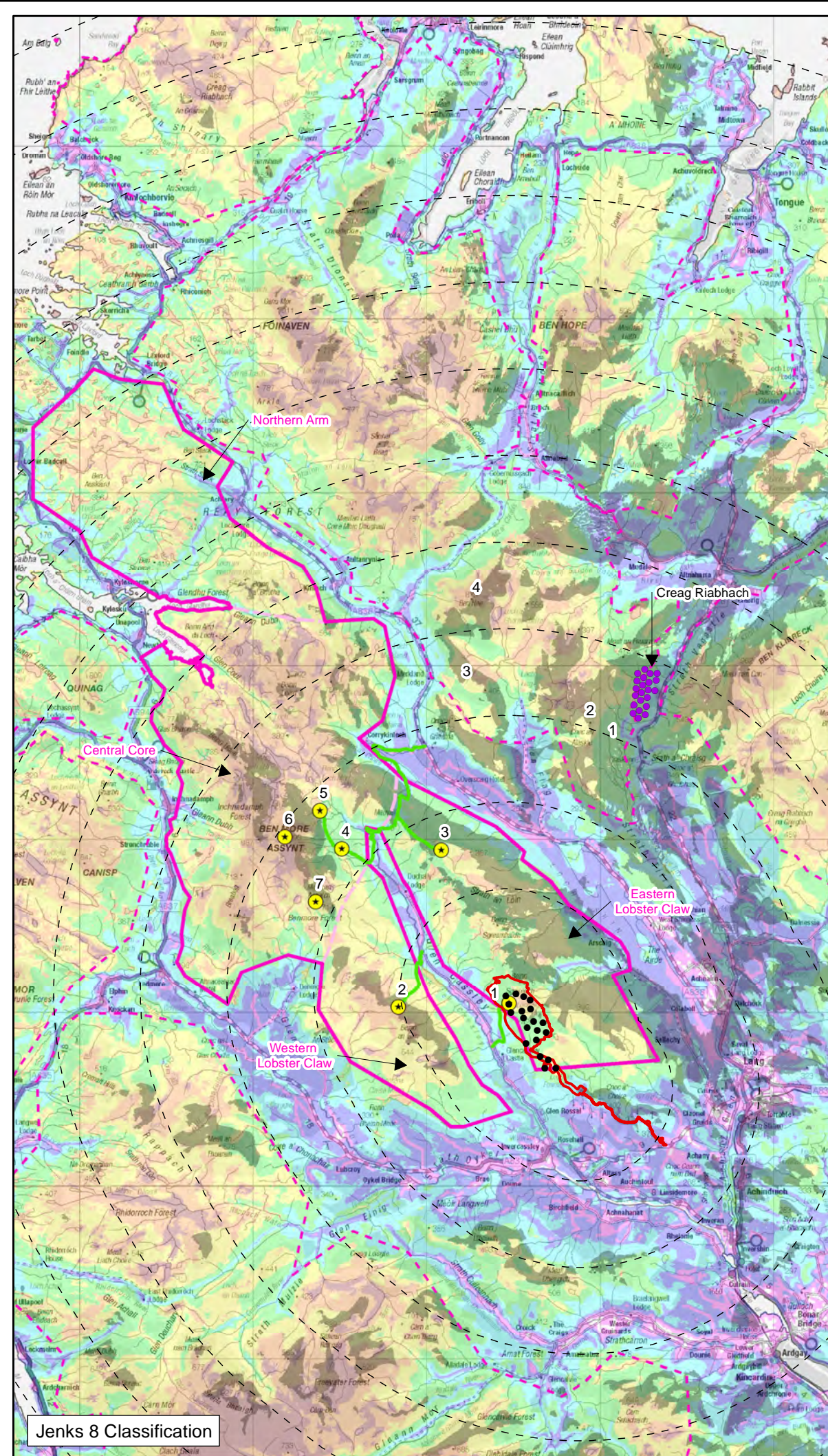
Scale 1:300,000@ A3

0 2 4 6 Km



TA 7.5 Figure 6
ZTV Overview (WLA 34):
Braemore

Achany Extension Wind Farm
EIA Report

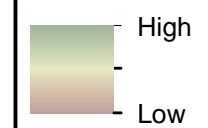


Key

- Site Boundary
- 5 km Buffer
- Proposed Turbine
- Consented Turbine
- Wild Land Area (WLA) 34: Reay - Cassley
- Other WLA
- WLA Sub-Section Divider
- + Assessment Location
- Access Route to Assessment Location
- Zone of Theoretical Visibility (ZTV)

Note: the ZTV will show as different shades where overlaid on the Jenks 8 or Attribute Mapping.

Lack of Built Artefacts



Jenks 8 Classification

- Class 1
- Class 2
- Class 3
- Class 4
- Class 5
- Class 6
- Class 7
- Class 8

Map of relative wildness GIS information obtained from NatureScot Natural Spaces website:
<http://gateway.snh.gov.uk/natural-spaces/index.jsp>

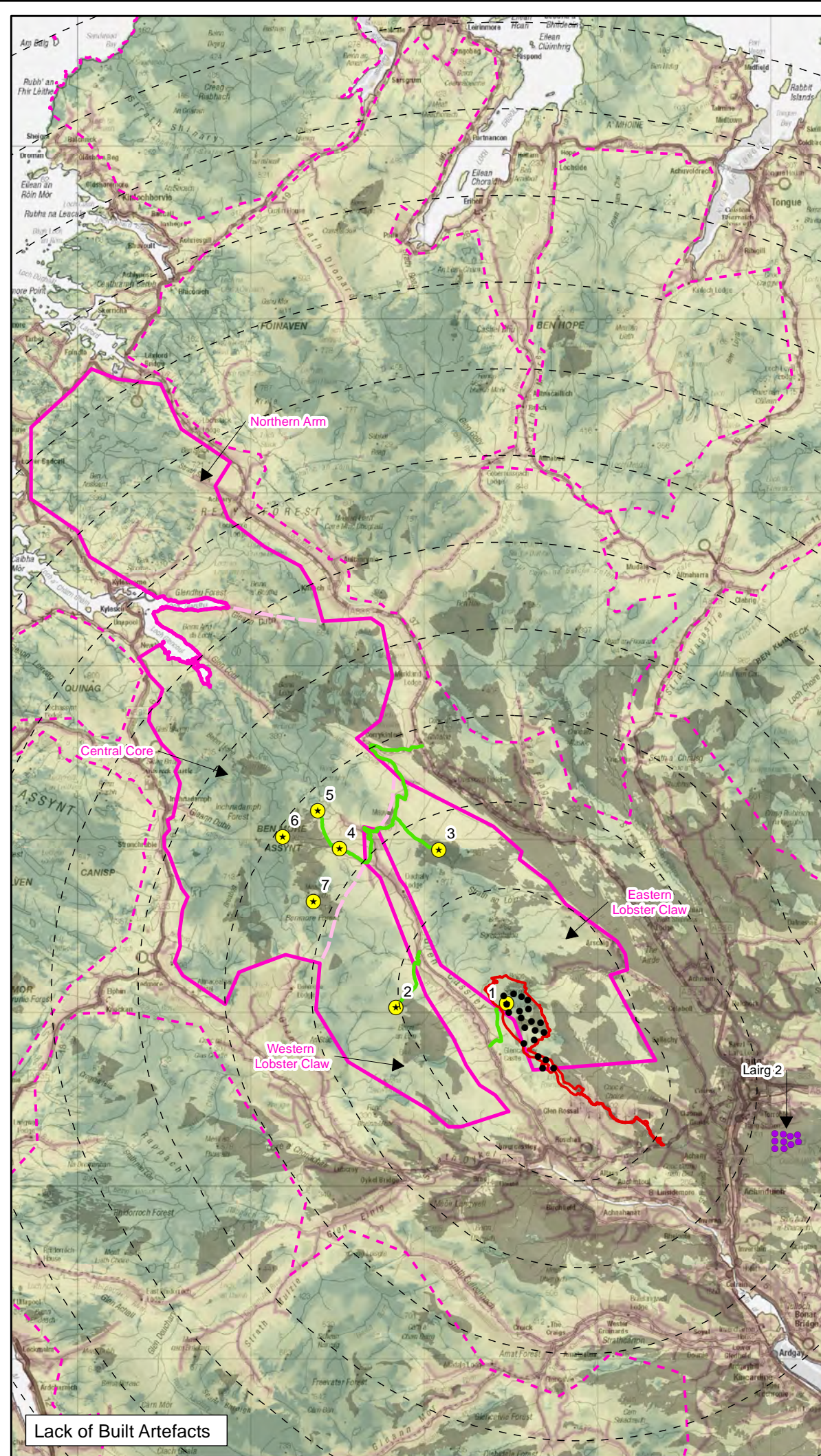
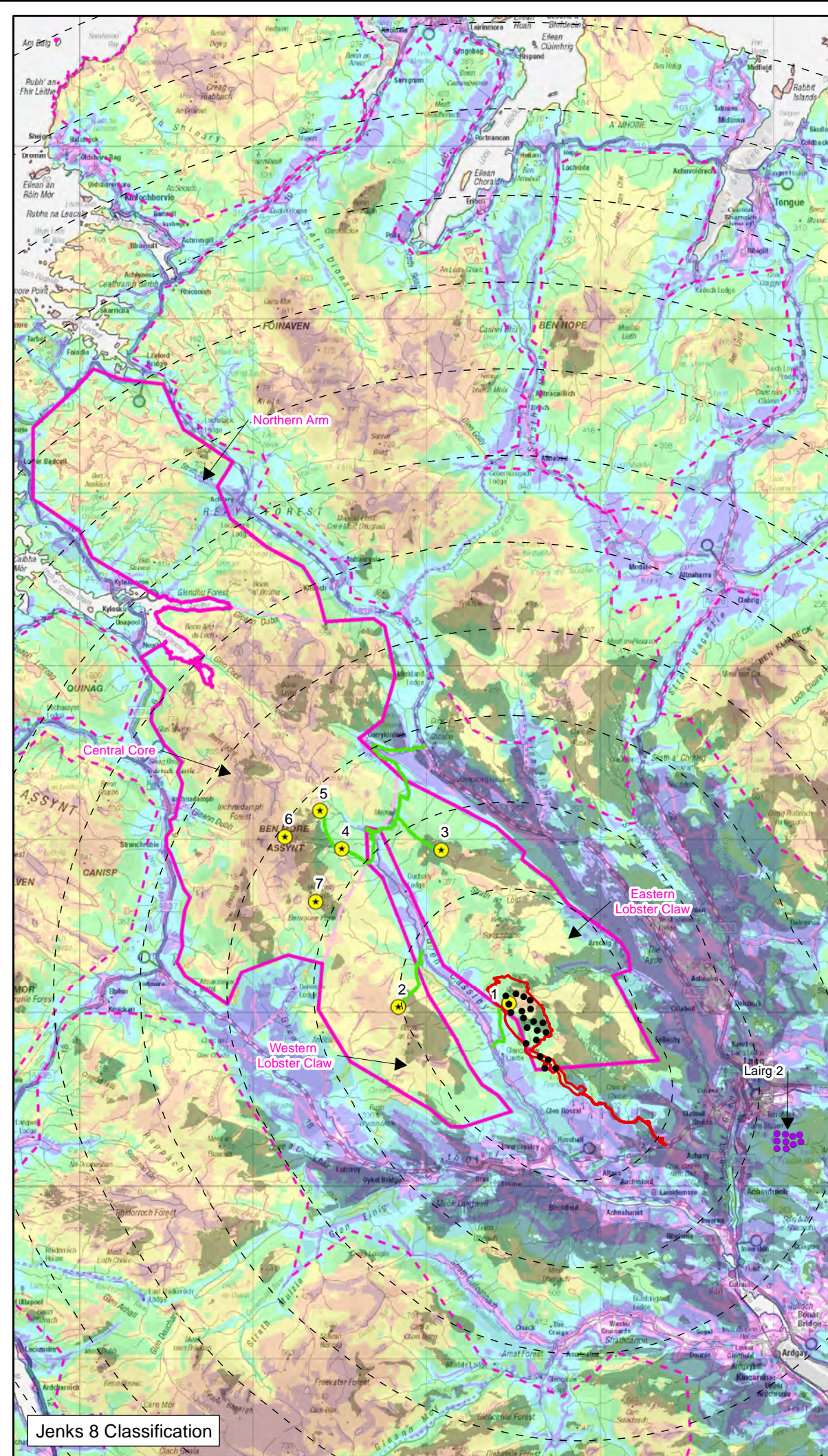
Scale 1:300,000@ A3

0 2 4 6 Km



TA 7.5 Figure 7
ZTV Overview (WLA 34):
Creag Riabhach

Achany Extension Wind Farm
EIA Report

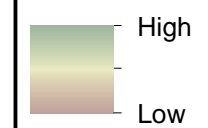


Key

- Site Boundary
- 5 km Buffer
- Proposed Turbine
- Consented Turbine
- Wild Land Area (WLA) 34: Reay - Cassley
- Other WLA
- WLA Sub-Section Divider
- + Assessment Location
- Access Route to Assessment Location
- Zone of Theoretical Visibility (ZTV)

Note: the ZTV will show as different shades where overlaid on the Jenks 8 or Attribute Mapping.

Lack of Built Artefacts



Jenks 8 Classification

- Class 1
- Class 2
- Class 3
- Class 4
- Class 5
- Class 6
- Class 7
- Class 8

Map of relative wildness GIS information obtained from NatureScot Natural Spaces website:
<http://gateway.snh.gov.uk/natural-spaces/index.jsp>

Scale 1:300,000@ A3

0 2 4 6 Km



TA 7.5 Figure 8
ZTV Overview (WLA 34):
Lairg 2 (Consented)

Achany Extension Wind Farm
EIA Report