

Community Benefit Funding

Since 2004, the existing Kingsmountain and Dunneill Community Fund has contributed over €654,000 to local groups in the vicinity of the existing wind farms.

In May, SSE marked two decades of community investment in the North-West by awarding funding to 14 local groups through the 2024 Kingsmountain and Dunneill Community Fund. The potential fund linked to the Crumhach Wind Farm would represent a significant increase on the existing Kingsmountain and Dunneill Community Fund.

Crumhach Wind Farm would include a community fund anticipated to be worth several hundred thousand euros annually, which would be implemented in accordance with government best practice.

If Crumhach Wind Farm receives planning consent and is constructed, SSE plans to conduct multiple local



consultation events to disseminate information regarding this fund, adhering to current government guidelines.

These events will also facilitate the expression of interest from community members to join a community benefit fund committee.

This committee will be established to ensure the effective allocation of funding in alignment with community needs, with a primary focus on developing a community funding strategy consistent with the UN Sustainable Development Goals.

Presentation of funding linked to the existing Kingsmountain and Dunneill Community Fund, which took place in the Old Schoolhouse, Templeboy in June 2024.



About SSE Renewables

SSE Renewables is a leading developer and operator of renewable energy in Ireland, operating some of the largest onshore wind farms on the island including the 174MW Galway Wind Park in Connemara and the 73MW Slieve Kirk Wind Park outside Derry City. Part of FTSE100-listed energy infrastructure company SSE plc, its strategy is to lead the transition to a net zero future through the world-class development, financing, construction and operation of clean power assets across a diverse mix of renewable technologies. SSE is delivering cleaner, more secure homegrown power assets to increase its operational renewable generation capacity from 5GW today to up to 9GW by 2027 as part of an almost €25bn clean energy plan, the five-year Net Zero Acceleration Programme (NZAP) Plus. This includes delivery of the world's largest offshore wind farm in construction.

SSE Renewables has a team of around 2,000 renewable energy professionals focused on championing clean energy delivery across the markets in which it operates. These include its core market focus in the UK and Ireland, as well as in selected markets in Continental Europe and Japan.

Contact us

Conor Joy
External Relations Manager
Email clo@sse.com

Post
SSE Renewables, Red Oak South, South County
Business Park, Leopardstown, Dublin 18, D18 W688

To learn more about the proposed
Crumhach Wind Farm, please visit:
www.sserenewables.com/crumhachwindfarm



Crumhach Wind Farm

a project by SSE Renewables

Public Consultation

Keeping You Informed – July 2025



Crumhach Wind Farm



Public Consultation Evenings

SSE will be running a public consultation for the proposed Crumhach Wind Farm for six weeks, from July 23rd to September 3rd. This builds on public engagement for the project which has been ongoing since April 2024.

During the public consultation, we hope to hear the views of the local community regarding the project. Our consultation materials, outlining further details on Crumhach, will be available to view in-person in person at the below locations and times.



Wednesday, July 23rd 2025
in Dromore West Community Centre
(F26 T9F9), from 2pm-8pm.



Thursday, July 24th 2025
in the Old Schoolhouse, Templeboy
(F91 T045), from 2pm-8pm.



For those unable to make our in-person events, all materials on display and an online feedback form will be available via our virtual consultation room from July 23rd. You can access the virtual consultation room from that date by visiting <https://www.sserenewables.com/crumhachwindfarm>.

Our consultation events are free to attend, will give the local community the chance to learn more about our plans and have any questions they might have answered by our project team. Thereafter, it is **our intention to submit a planning application directly to An Coimisiún Pleanála (formerly An Bord Pleanála) in Q1 2026 through the Strategic Infrastructure Development (SID) planning process**, which is designed for large-scale developments of national importance.

About the Project

Through the proposed Crumhach Wind Farm we are seeking to secure and extend our over two-decade long presence in Sligo.

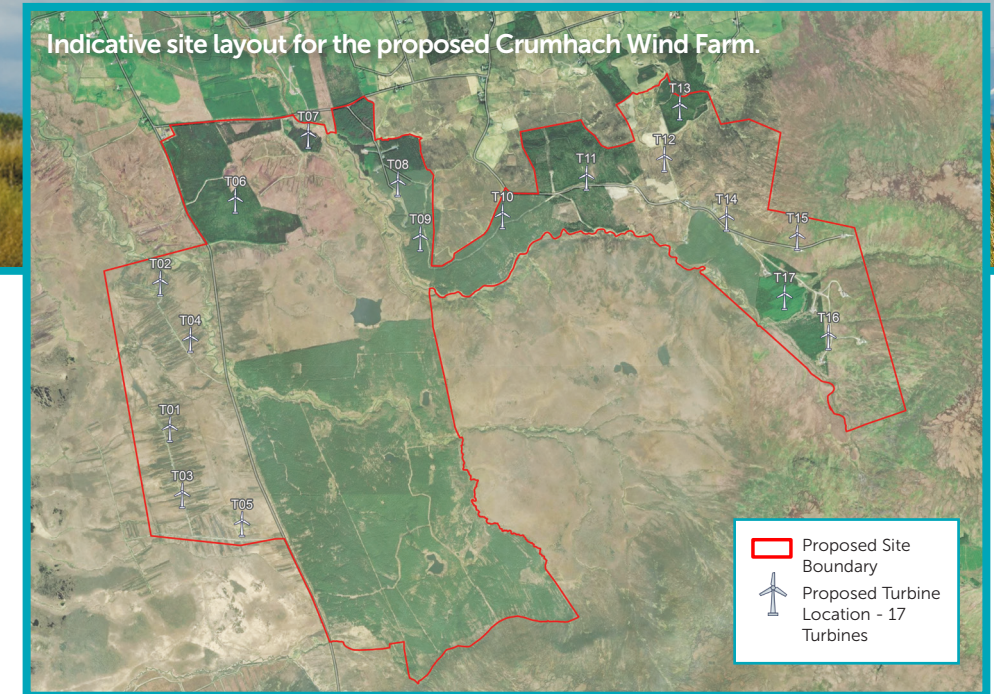
In Sligo, SSE has operated Kingsmountain Wind Farm since 2003, and the neighboring Dunneill Wind Farm since 2010. Together, both wind farms constitute over 36MW of clean energy, powering Irish homes and businesses and removing harmful carbon dioxide emissions from Ireland's electricity fuel mix in addition to providing a significant economic boost locally. Crumhach Wind Farm would involve the repowering of the Dunneill and Kingsmountain wind farms, in addition to greenfield development located

in-between the existing wind farms and on lands located south-south-west of the existing wind farms, with part of the proposed development on Coillte lands. Repowering would involve the dismantling and replacement of turbine equipment, with existing infrastructure on site such as roads and grid connection equipment being reused where possible.

Repowering can provide several benefits including continuing the productive use of existing windfarm sites and significantly increasing the clean energy produced at these sites.



Indicative site layout for the proposed Crumhach Wind Farm.



While the number and layout of turbines will be refined during the project design stage, the proposed development will likely comprise the removal of the 23 existing wind turbines from Dunneill Wind Farm (13 turbines) and Kingsmountain Wind Farm (10 turbines) and the construction of 17 wind turbines across the proposed site, in addition to an onsite substation. We are no longer proposing that a battery energy storage system (BESS) will be included as part of our forthcoming planning application.

The draft layout for the proposed Crumhach Wind Farm comprises turbines with a maximum tip height of 180m. The wind farm will generate up to 100MW of energy, based on the current design proposals.

Key Benefits



Provide up to 100MW of green, renewable energy.



Creation of approximately 80-100 jobs during the construction phase, with 2-3 jobs during the operational phase.



Prevent approximately 70,000 metric tonnes of harmful CO2 being released each year.



Contribute to Ireland's binding climate targets.



Investment in the local economy and communities.



Annual Community Benefit Fund which could be worth several hundred thousand euros per-annum.