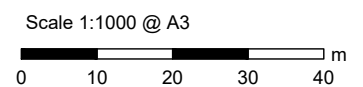
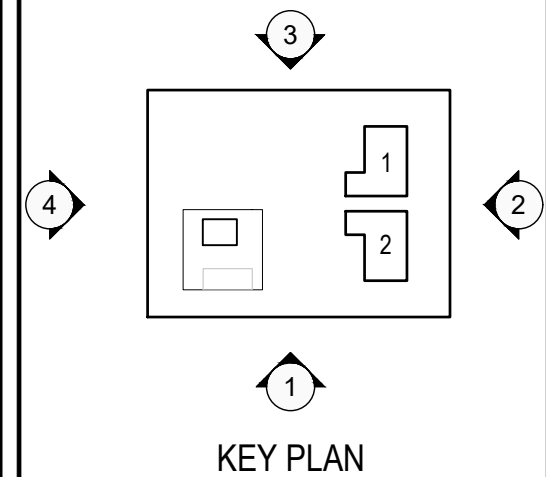


**Notes**

1. All dimensions are in metres (m) unless stated otherwise.
2. Layout and dimensions are indicative and are subject to change after detailed design.
3. Given site location, it is possible that "outdoor" equipment will require to be installed within buildings. These buildings are shown as a dashed line.
4. Additional transmission busbar works may be required to link the two transformers. This is dependent on the specific connection voltage and design provided by SHETL.



**Figure 3.8b**  
Substation Layout - Elevations