










Key

 Site Boundary

 Turbine

 Vantage Points
(Apr. 2019 - Aug. 2020)

VP Viewsheds (to 15m)

-  1
-  2
-  3
-  4
-  5
-  6
-  7

VP number, Easting, Northing, Bearing

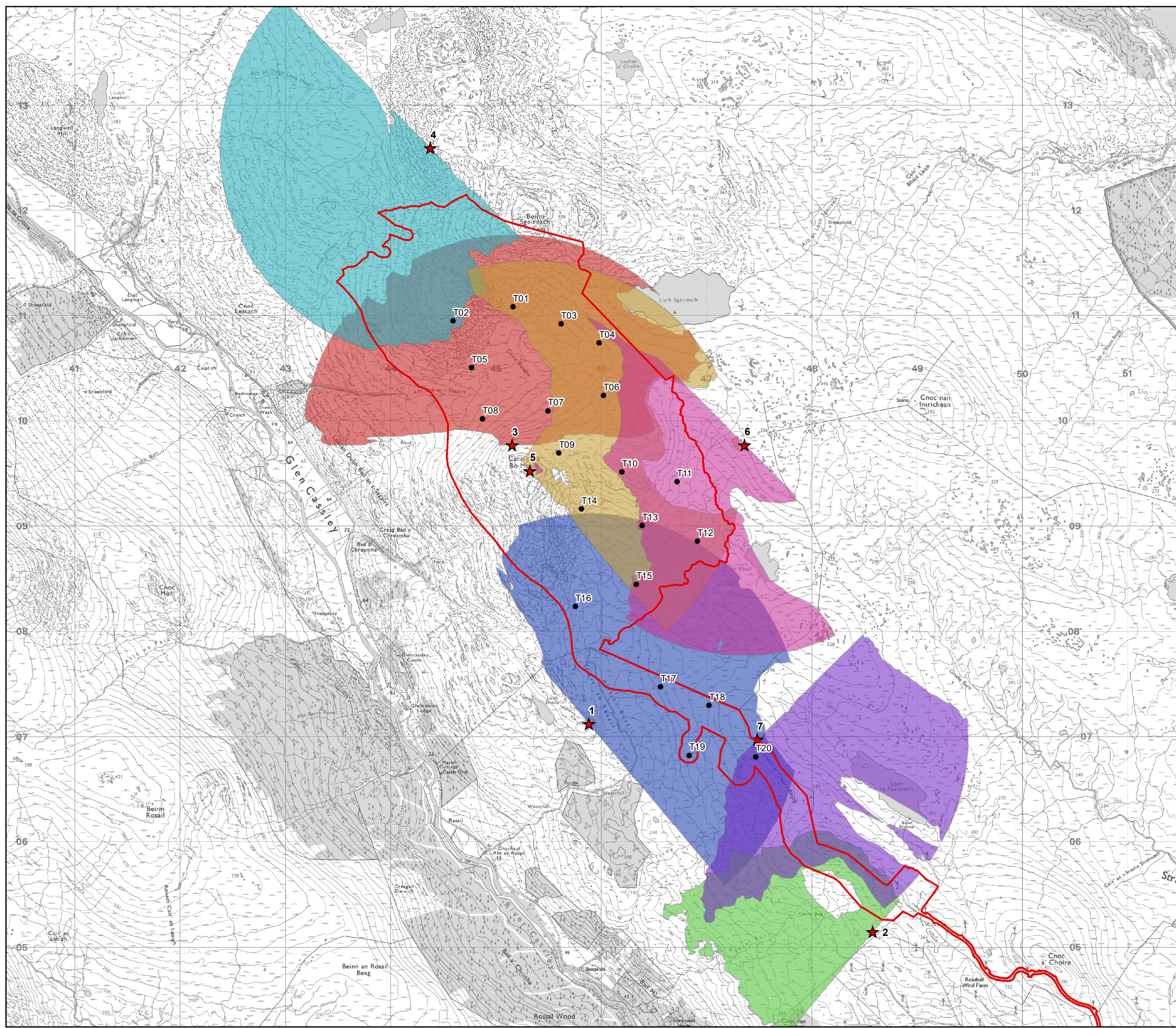
- 1, 245883, 907123, 50°
- 2, 248578, 905147, 310°
- 3, 245154, 909771, 0°
- 4, 244377, 912594, 225°
- 5, 245322, 909529, 50°
- 6, 247362, 909773, 225°
- 7, 247482, 906974, 135°

0 0.5 1 km
Scale: 1:35,000 @ A3



Figure No. 9.7b
Vantage Points and Viewsheds (to 15m)
Apr. 2019 - Aug. 2020

Achany Extension Wind Farm
EIA Report



W:\86065EC - SSE GlenCasley WF, On 2019_2020\Technical\Graphics\GIS\MXDs\Figures\SSE8606-001-5-007 Vantage Point Locations_and_Viewsheds_15m_Terrain5_Fig9_7b.mxd