



FIGURE 4.11b - VP11: Forsinard Photomontage

OS reference: 288982 E 942360 N Distance to development: 11.0km Ground level: 158.74m AOD Direction of view: 313.15°  
Camera: Canon EOS 5D Mk II Focal length: 50mm vertical (27°) x 28mm horizontal (65.5°) Camera height: 1.5m Date: 15/08/19 Time: 11:09  
Drawing No. - 121002-D-SI4.11b-1.0.0 Date - 12/07/2021

*The images contained on this page and the following are not representative of scale and distance from the actual viewpoint and show the wind farm development in its wider landscape context only.*





Existing View

Terrain model



Strathy South 35 Turbine  
Proposed Varied Development



Strathy North Wind  
Farm Turbine

OS reference: 288982 E 942360 N Distance to development: 11.0km Ground level: 158.74m AOD Direction of view: 313.15°  
Camera: Canon EOS 5D Mk II Focal length: 50mm vertical (27°) x 28mm horizontal (65.5°) Camera height: 1.5m Date: 15/08/19 Time: 11:09  
Drawing No. - 121002-D-SI4.11c-1.0.0 Date - 12/07/2021

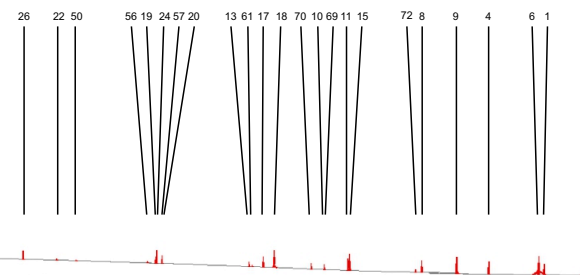


FIGURE 4.11c - VP11: Forsinard Baseline Photo and Wireline