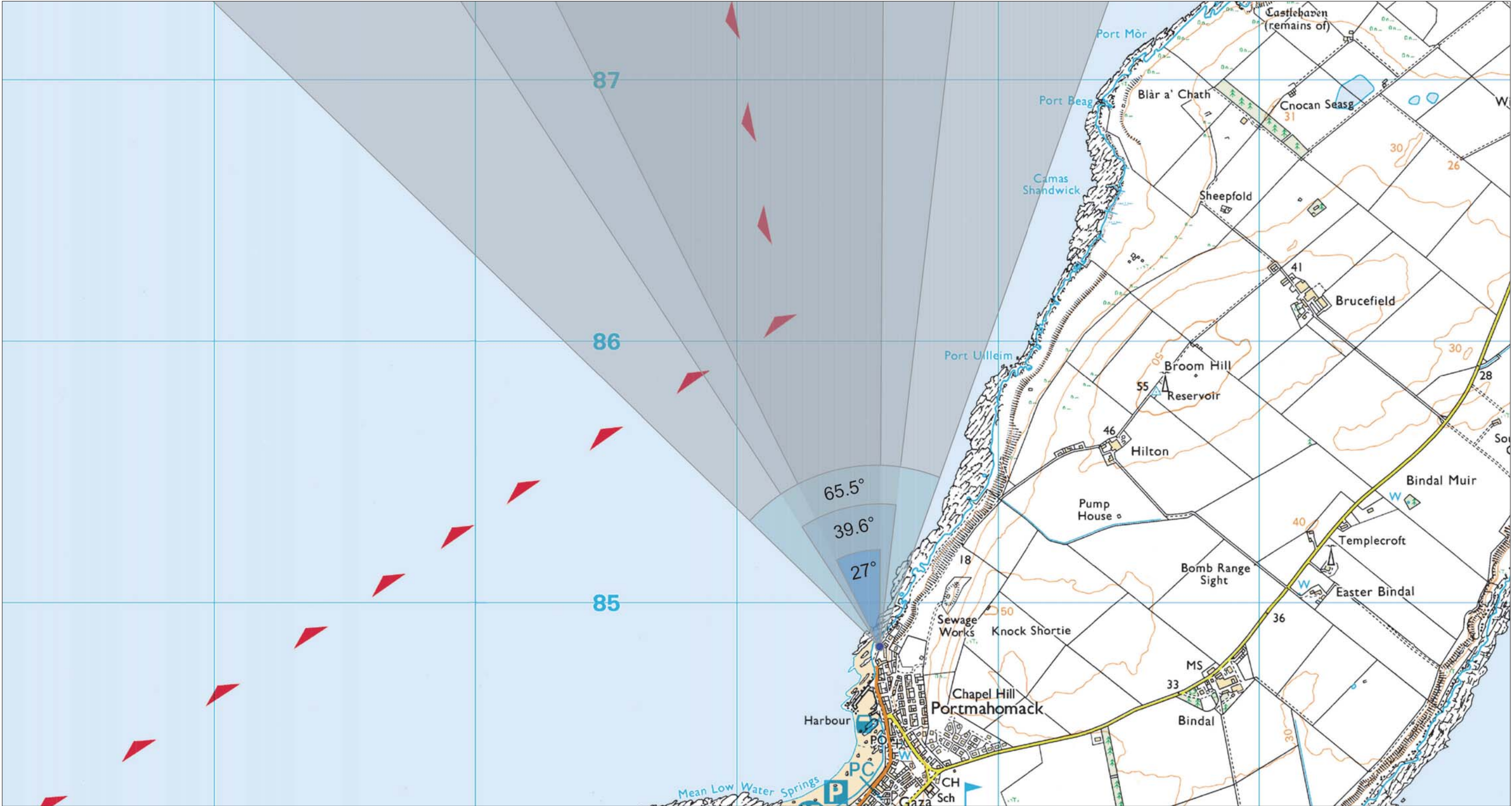


Viewpoint 16: Portmahomack



Grid Ref: 291545 884832 Distance to nearest turbine: 28.385km AOD: 4m

Travel into Portmahomack on the B9165. Drive all the way through the village to the northern end of the road, where there is a large, roughly-surfaced parking/turning area that also gives access to several houses. The viewpoint is located on the western edge of this area, close to the rocky edging.

THC Viewpoint 16  
**Portmahomack**  
Fig 7.49

**Gordonbush Extension Wind Farm  
Environmental Statement**



Extent of 50mm single frame image



**Viewpoint 16: Portmahomack**

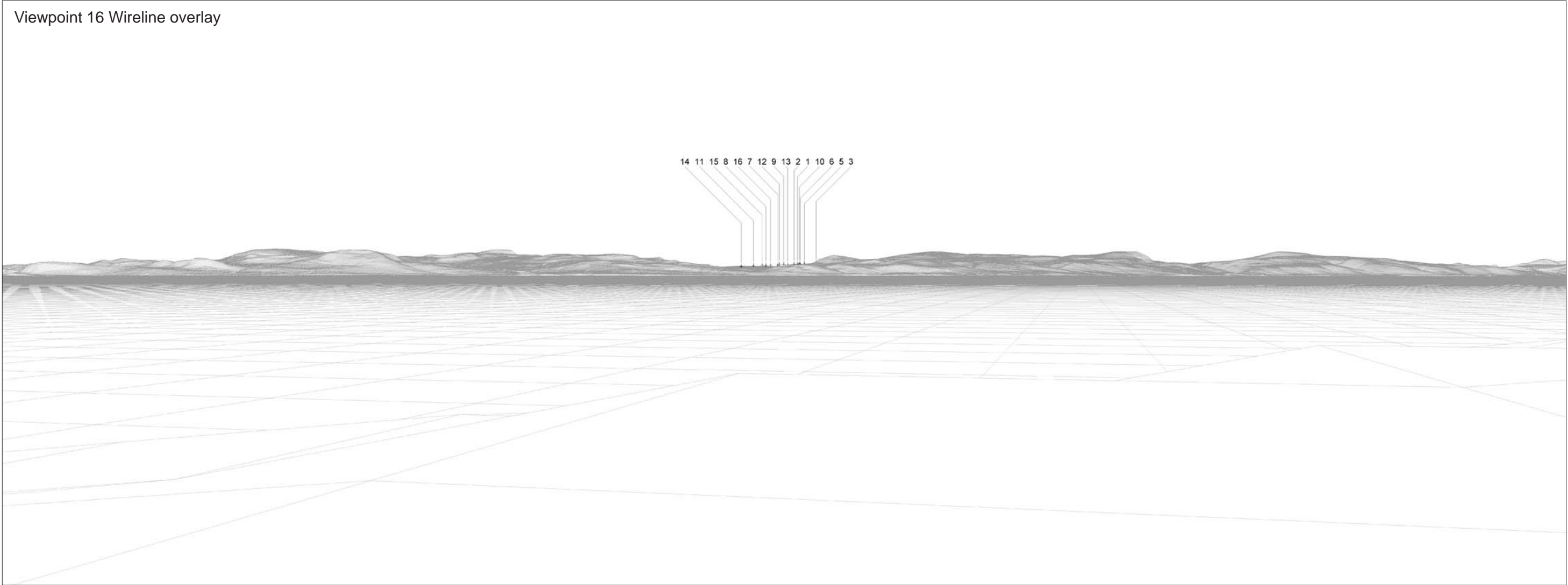
Distance to nearest turbine: 28.385km      Camera: EOS 5D II      Focal length: 50mm vertical (27°) x 28mm horizontal (65.5°)      Camera height: 1.5m      Date:04/03/15      Time: 12:22

The images contained on this page and the following two pages are not representative of scale and distance from the actual Viewpoint and show the wind farm development in its wider landscape context only.





Viewpoint 16 Existing view



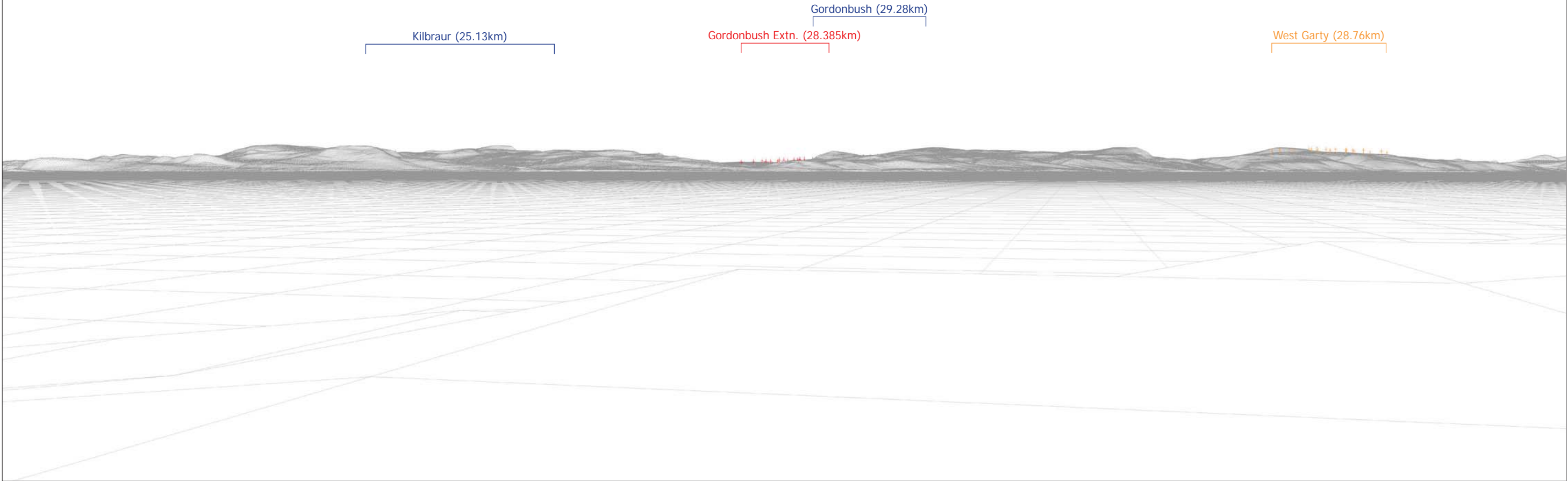
Viewpoint 16 Wireline overlay





Viewpoint 16 Existing view

Viewpoint 16 Cumulative Wireline. Application turbines in red, operational / under construction in blue and application in orange.







**Viewpoint 16: Portmahomack**

Distance to nearest turbine: 28.385km    Camera: EOS 5D II    Focal length: 50mm    Camera height: 1.5m    Date: 04/03/15    Time: 12:21

When viewed at a comfortable arm's length, this image is representative of the maximum field of view of clear vision but is not representative of scale and distance.





**Viewpoint 16: Portmahomack**

Distance to nearest turbine: 28.385km    Camera: EOS 5D II    Focal length: 75mm    Camera height: 1.5m    Date: 04/03/15    Time: 12:21

This image should be viewed at a comfortable arm's length (approx. 500mm).