

Key

- Site Boundary
- Natural Heritage Future Zone Boundary
- Forsinard RSPB Reserve
- Caithness and Sutherland Peatlands SAC, SPA and Ramsar site
- Caithness Lochs SPA
- East Caithness Cliffs SPA
- North Caithness Cliffs SPA
- North Sutherland Coastal Islands SPA

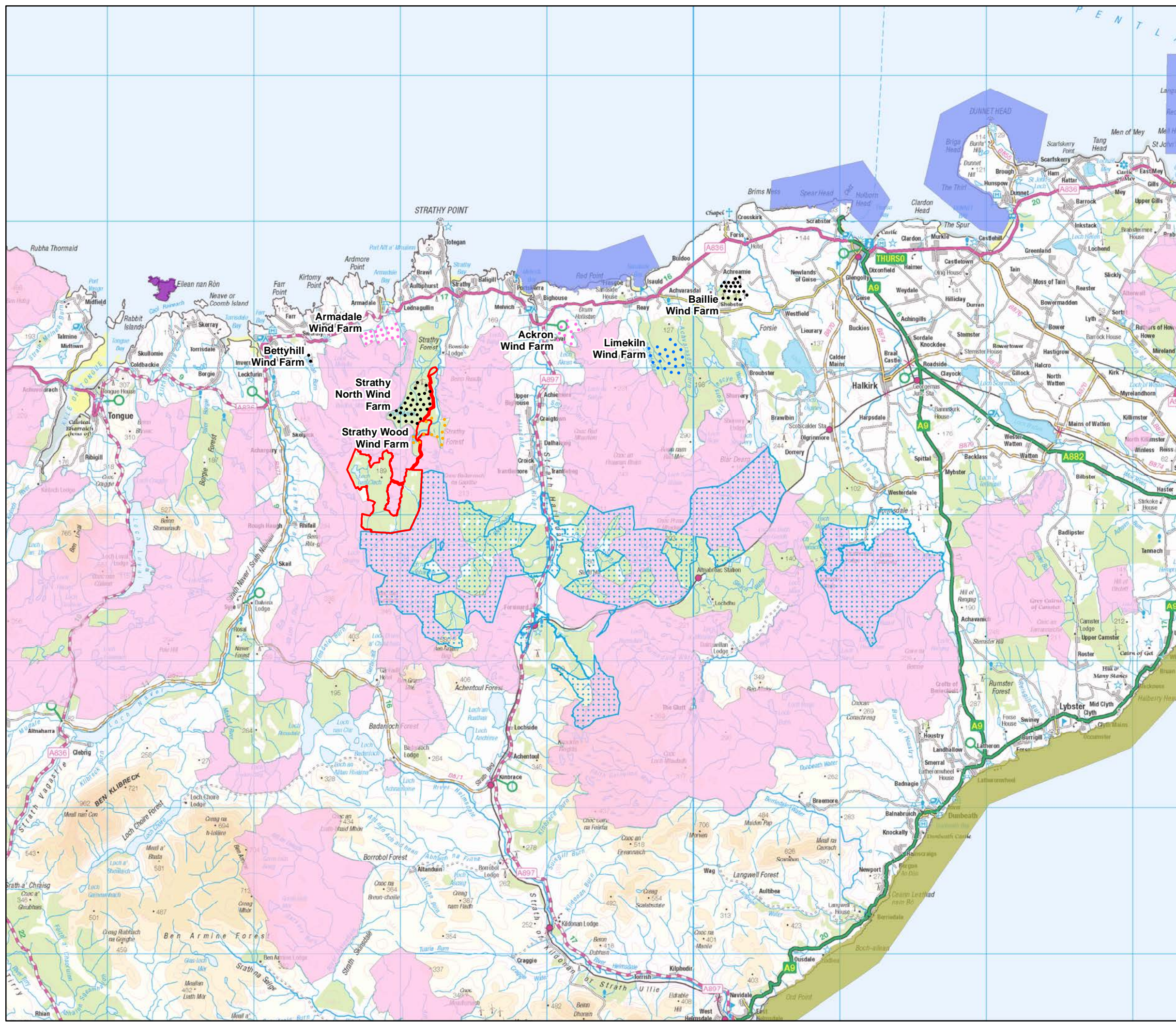
Notes:
The qualifying species of the Caithness & Sutherland Peatland SPA are:

Species	No. of pairs
Red-throated diver	89
Black-throated diver	26
Hen harrier	14
Golden eagle	5
Merlin	54
Golden plover	1064
Wood sandpiper	5
Short-eared owl	30
Dunlin	1860
Common scoter	27
Greenshank	256
Wigeon	43

Scale 1:400,000@ A3

Figure 5.1
Site Context in Relation to NHFZs,
SPAs and RSPB Reserves

Strathy South Wind Farm
EIAR 2020



Key

- Site Boundary
- Wind Farm Status ***
- Constructed
- Consented
- In Planning
- Scoping
- Forsinard RSPB Reserve
- Caithness and Sutherland Peatlands SAC, SPA and Ramsar site
- Caithness Lochs SPA
- East Caithness Cliffs SPA
- North Caithness Cliffs SPA
- North Sutherland Coastal Islands SPA

*Windfarm status source:
Ash Consultants Feb 2020

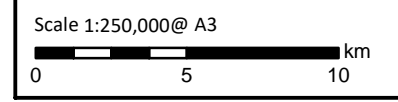
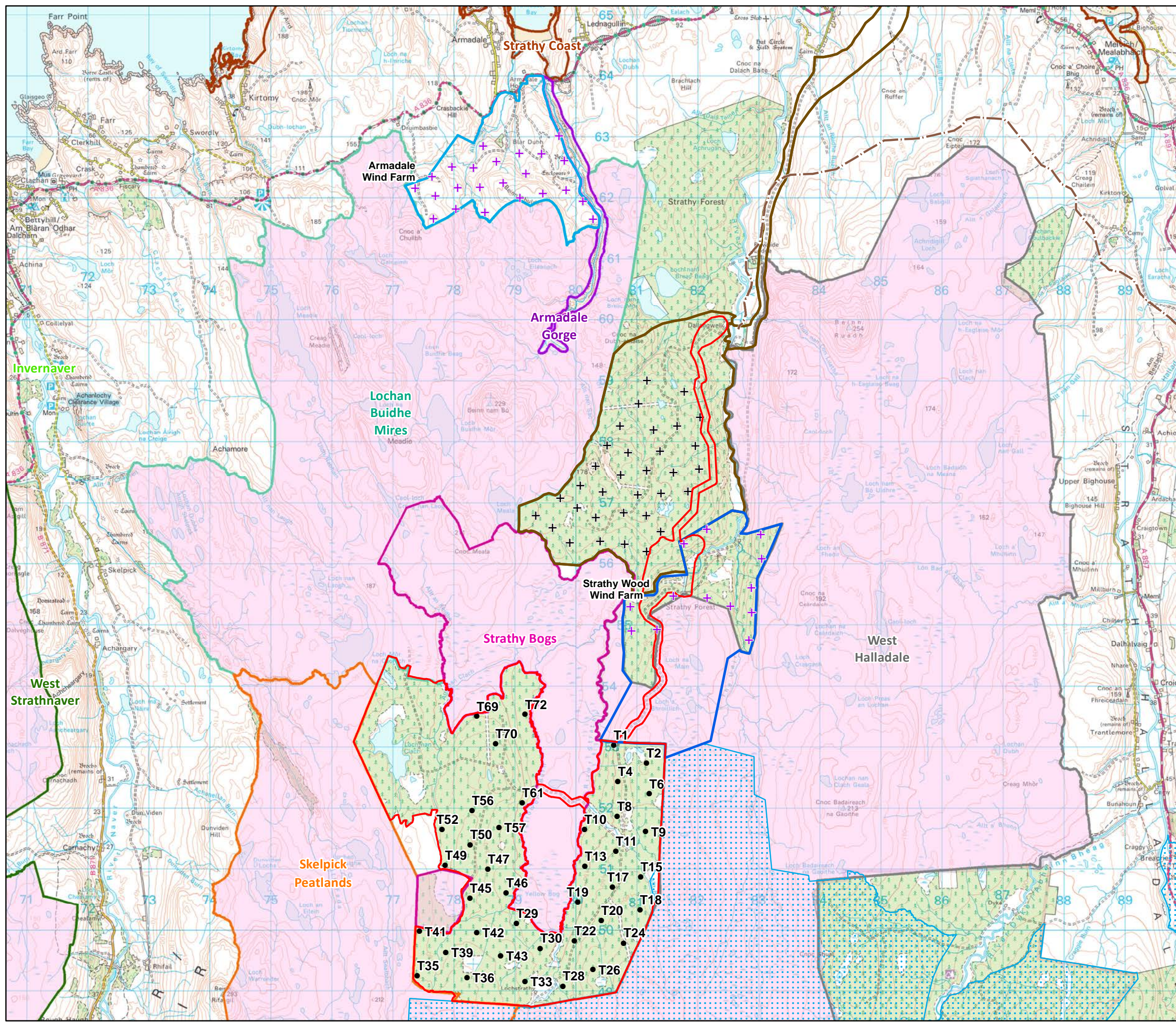


Figure 5.2
Local Site Context in Relation to SPAs,
RSPB Reserves and Wind Farms

Strathy South Wind Farm
EIAR 2020



Key

- Site Boundary
- Turbine
- + Armadale Scoping Layout
- + Strathy Wood Proposed Turbines
- Strathy North Site Boundary
- Armadale Site Boundary
- Strath Halladale to Dallangwell Grid Connection
- Strathy Wood Site Boundary
- Caithness and Sutherland Peatlands SAC and SPA
- Armadale Gorge SSSI
- Lochan Buidhe Mires SSSI
- Skelpick Peatlands SSSI
- Strathy Bogs SSSI
- Strathy Coast SSSI
- West Halladale SSSI
- West Strathnaver SSSI
- Forsinard RSPB Reserve

Scale 1:60,000 @ A3

Figure 5.3
 Local Site Context in Relation to SPA/Ramsar Site, SSSIs, RSPB Reserve and Local Wind Farm Developments

Strathy South Wind Farm
 EIAR 2020

W:\8547SEC - SSE, Strathy South Breeding Season Data Processing\Technical\Graphics\GIS\MXDs\Figures\Chapter Figures - NO RPS LOGO\SEC8547-Figs 3-0003-001 Local_Site_Context_in_Relation_to_Designations.mxd



Key

- Site Boundary
- Turbine
- Strathy North Wind Farm
- Strathy Wood Proposed Turbines
- Strathy North Site Boundary
- Strathy Wood Site Boundary
- Landownership Boundary
- Preferred Access Route
- Alternative Access Route
- Common Access Route

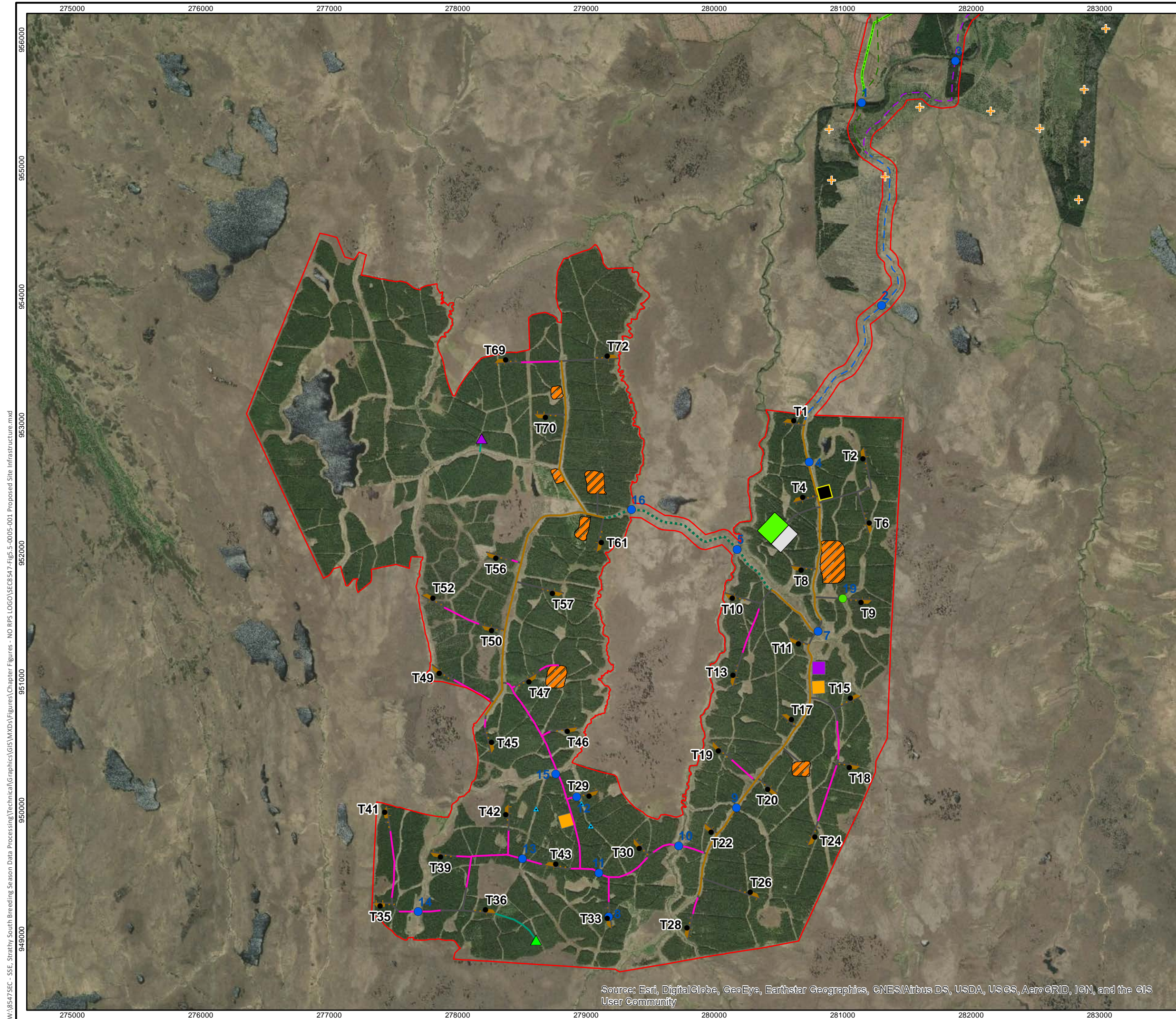
Scale 1:40,000 @ A3

Figure 5.4
Site Boundary, Proposed Turbine
Layout and Landownership Boundaries

Strathy South Wind Farm
EIAR 2020

Source: Esri, DigitalGlobe, GeoEye, Earthstar Geographics, CNES/Airbus DS, USDA, USGS, AeroGRID, IGN, and the GIS User Community

W:\85475EC - SSE, Strathy South Breeding Season Data Processing\Technical\Graphics\GIS\MXDs\Figures\Chapter Figures - NO RPS LOGO\SEC547-Figs-4-0004-001_Site_Layout_and_Land_Ownership.mxd



Key

- Site Boundary
- Turbine
- Strathy Wood Proposed Turbines
- Hardstand
- Access Track
- Cut
- Floating
- Upgrade
- LiDAR Track
- LiDAR A
- LiDAR B
- Water Abstraction Location
- Water Crossing
- Water Crossing - New
- Water Crossing - Remove
- Preferred Access Route
- Alternative Access Route
- Common Access Route
- Preferred Indicative Cable Route through Strathy North
- Alternative Indicative Cable Route through Strathy North
- Common Indicative Cable Route through Strathy North
- Strathy North Access Route
- Substation
- Substation Temporary Laydown Area
- Batching Plant
- Amended Laydown Area
- Construction Compound
- Borrow Pit
- Existing Yellow Bog Track, Surfacing to be Upgraded and Minor Localised Widening

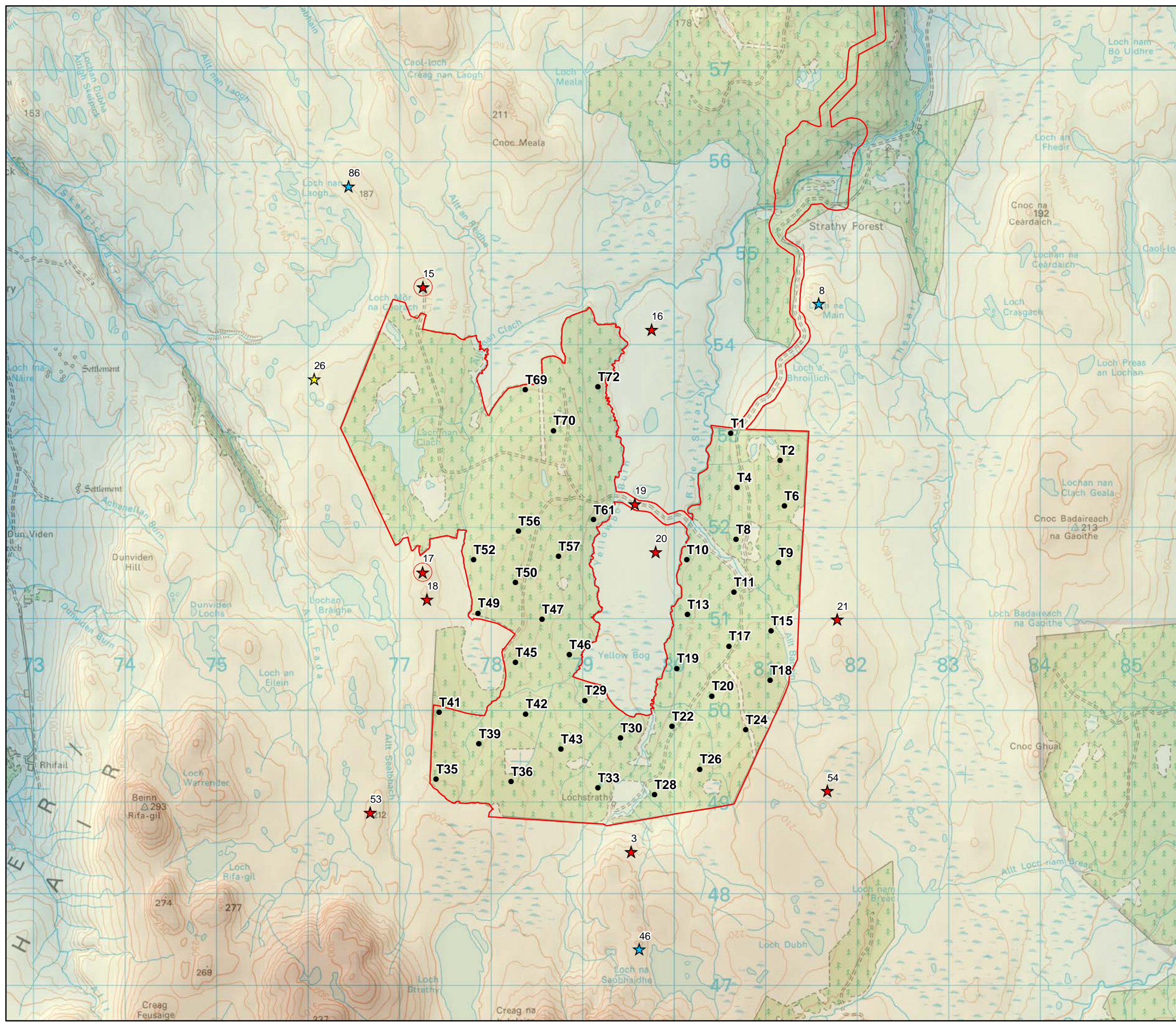
Scale 1:28,000 @ A3

0 0.5 1 km

N

Figure 5.5
Site Boundary and Proposed Wind Farm Infrastructure

Strathy South Wind Farm
EIAR 2020



Key

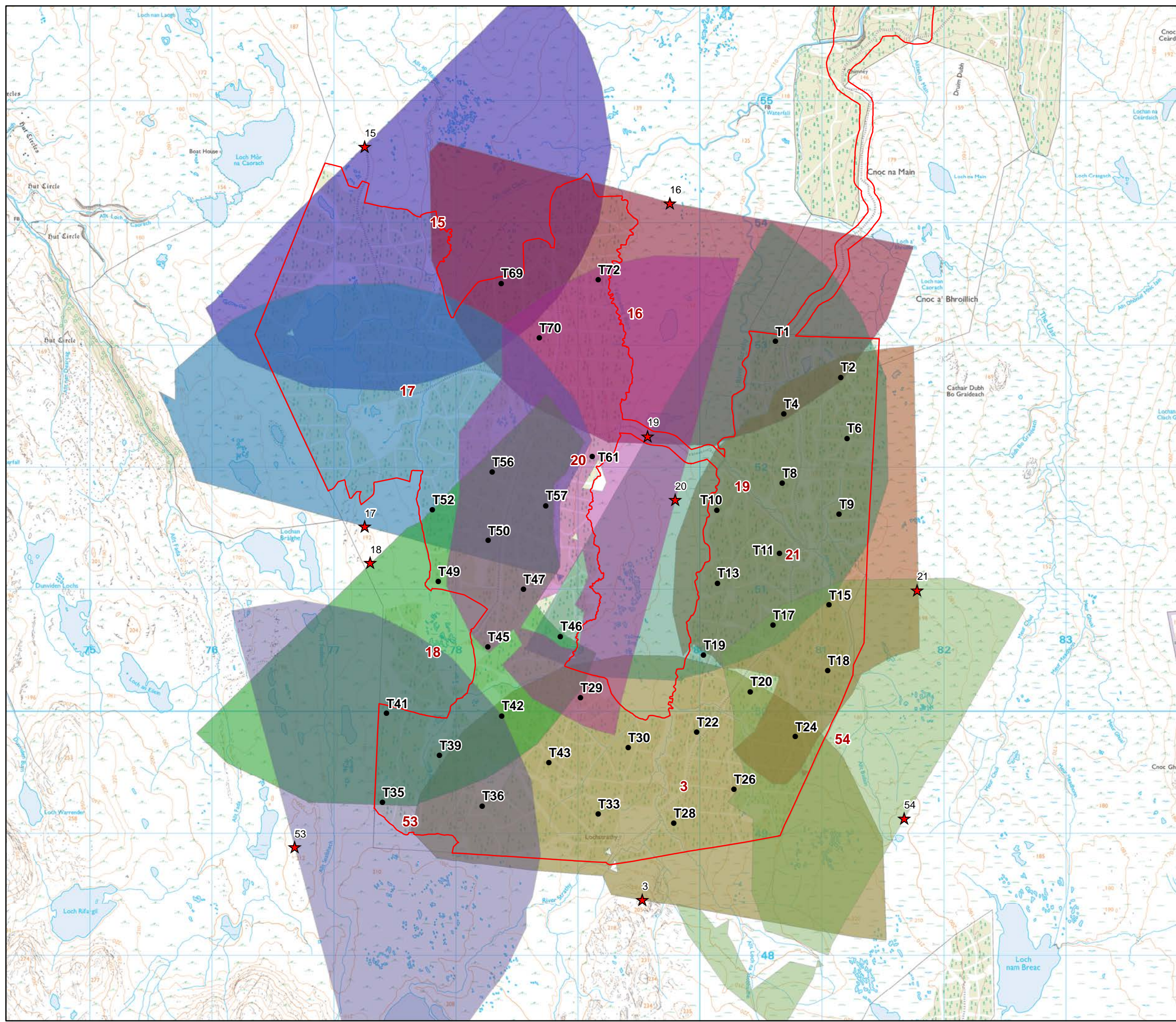
- Site Boundary
- Turbine
- ★ RPS VPs (2018 & 2019)
- ★ RPS diver VPs (2018 & 2019)
- ★ RPS diver VPs (2019)
- High seats used at VPs 15 and 17

Scale 1:40,000 @ A3

Figure 5.6
Site Topography and
Vantage Point Locations

Strathy South Wind Farm
EIAR 2020

W:\85475EC - SSE, Strathy South Breeding Season Data Processing\Technical\Graphics\GIS\MXDs\Figures\Chapter Figures - NO RPS LOGO\SEC0547-Figs 5.6-0006-001 Site Topography & Vantage Point Locations.mxd



Key

- Site Boundary
- Turbine
- ★ RPS VPs (2018 & 2019)

VP viewedshed (to 20 m)

- 3
- 15
- 16
- 17
- 18
- 19
- 20
- 21
- 53
- 54

Scale 1:30,000 @ A3

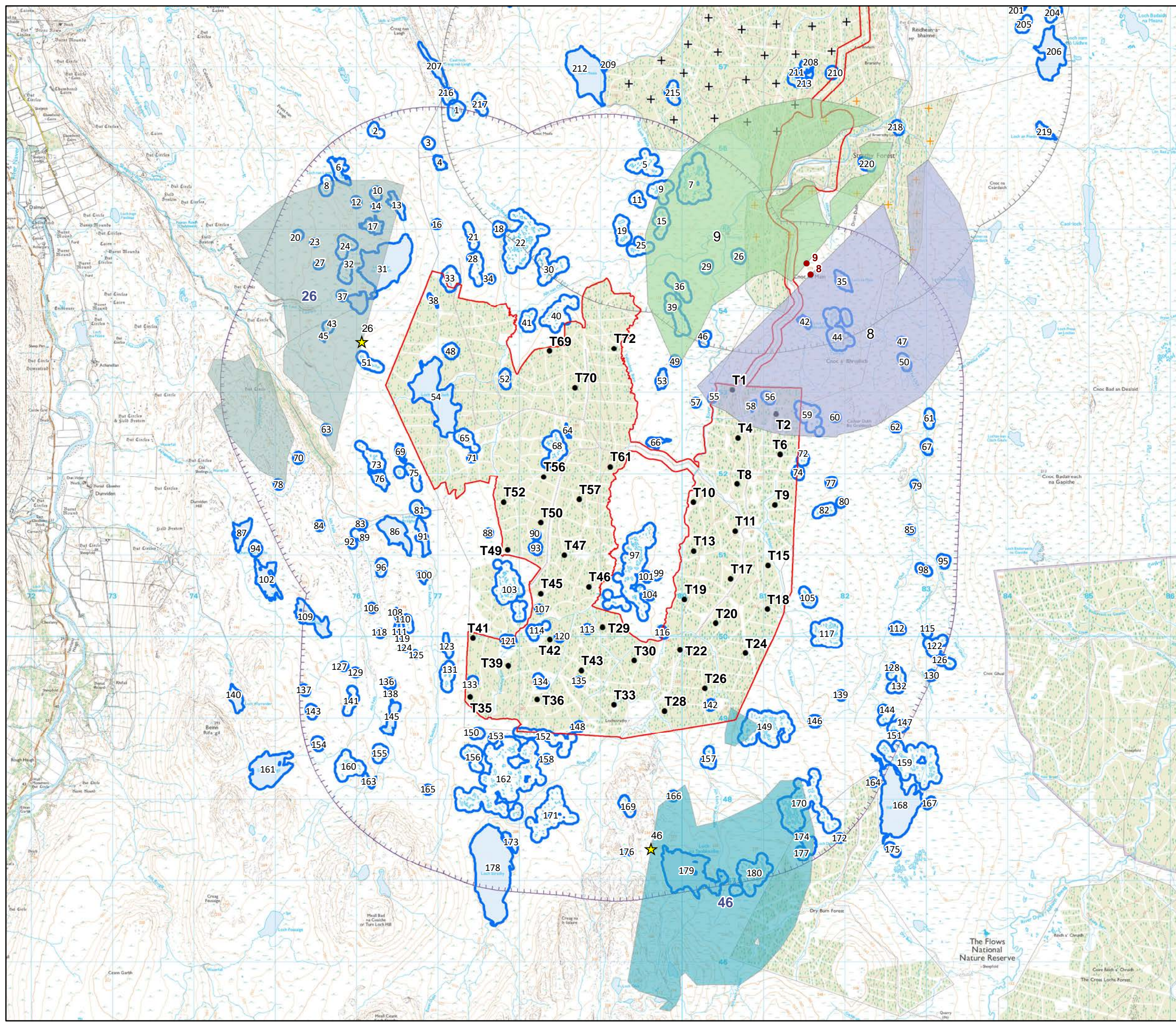
0 0.5 1 km

N

Figure 5.7
RPS VP Locations 2018 and 2019
with 2 km Viewshed to 20 m

Strathy South Wind Farm
EIAR 2020

W:\8547SEC - SSE, Strathy South Breeding Season Data Processing\Technical\Graphics\GIS\MXDs\Figures\Chapter Figures - NO RPS LOGO\SEC547-Figs.7-0007-001-RPS VP Locations 2018 & 2019.mxd



Key

- Site Boundary
- Turbine
- Strathy North Wind Farm
- Strathy Wood Proposed Turbines
- RPS diver VPs (2018)

Diver VP viewshed (to 20 m)

- 26
- 46
- EON/RWE Diver VPs

EON/RWE Diver VP viewshed (to 20 m)

- 8
- 9

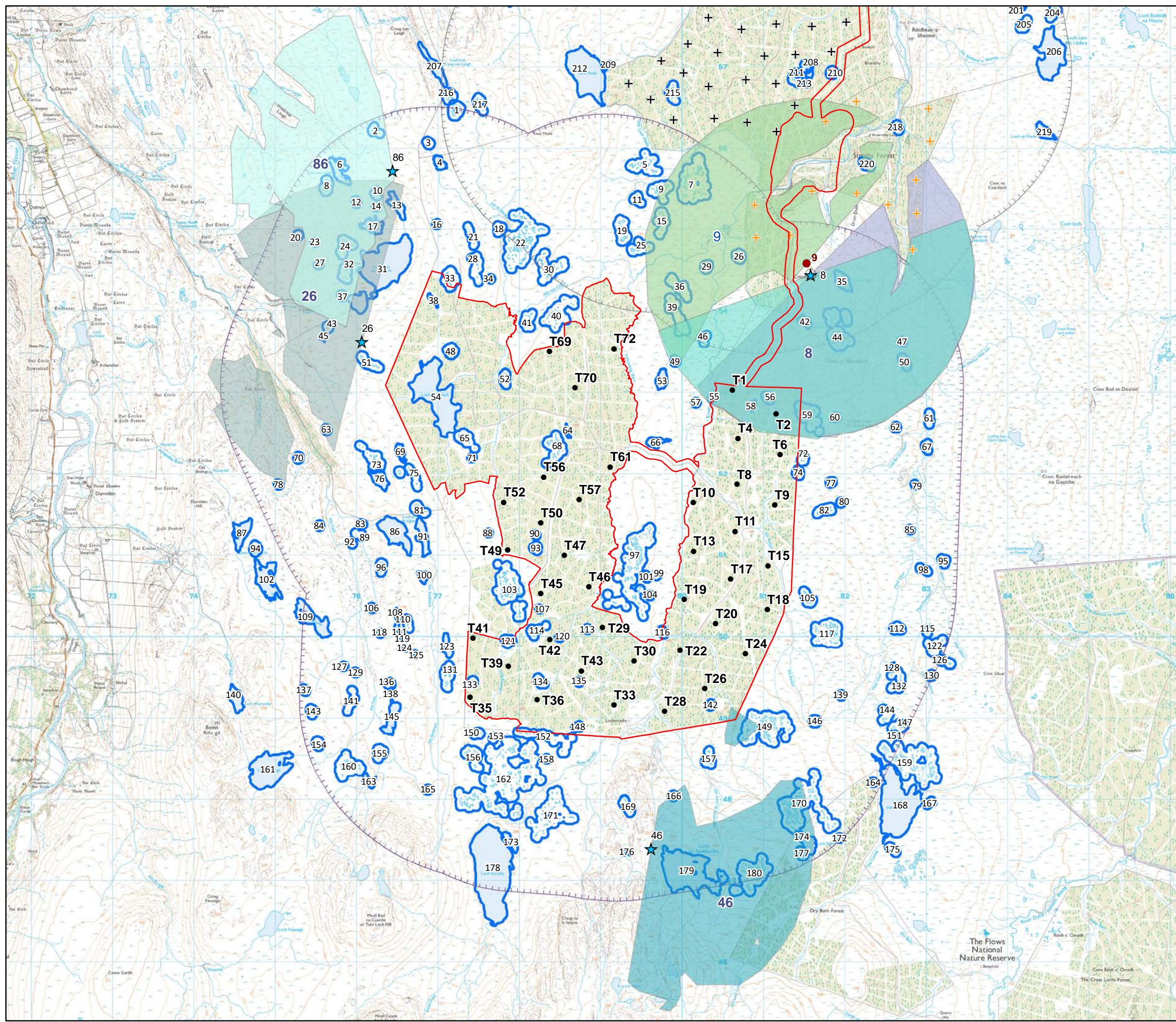
- Strathy South Breeding Survey Boundary
- Strathy North Breeding Survey Boundary
- Lochs For Breeding Diver Survey

Scale 1:45,000 @ A3

Figure 5.8
RPS Diver VP Locations 2018 with
2 km Viewshed to 20 m

Strathy South Wind Farm
EIAR 2020

W:\85475EC - SSE, Strathy South Breeding Season Data Processing\Technical\Graphics\GIS\MXDs\Figures\Chapter Figures - NO RPS LOGO\SEC547-Figs-8-0015-001-RPS Diver VP Locations 2018.mxd



Key

- Site Boundary
- Turbine
- Strathy North Wind Farm
- Strathy Wood Proposed Turbines
- RPS diver VPs (2019)

Diver VP viewshed (to 20 m)

- 8
- 26
- 46
- 86

EON/RWE Diver VPs

- 8
- 9

EON/RWE Diver VP viewshed (to 20 m)

- 8
- 9

- Strathy South Breeding Survey Boundary
- Strathy North Breeding Survey Boundary
- Lochs For Breeding Diver Survey

VP 8 completed at the same location by RPS and EON/RWE

Scale 1:45,000 @ A3

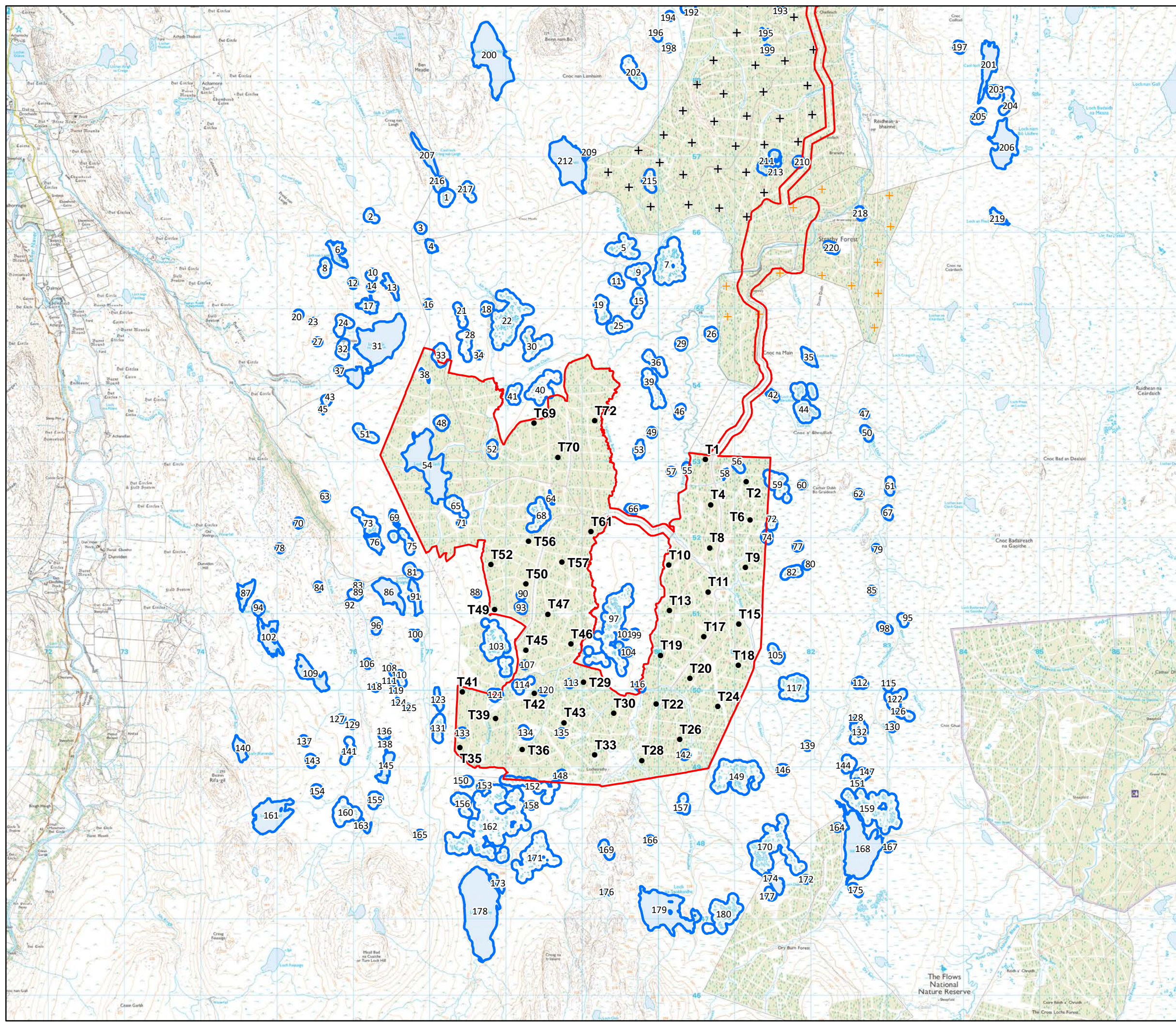
Figure 5.9
RPS Diver VP Locations 2019 with
2 km Viewshed to 20 m

Strathy South Wind Farm
EIAR 2020

W:\85475EC - SSE, Strathy South Breeding Season Data Processing\Technical\Graphics\GIS\MXDs\Figures\Chapter Figures - NO RPS LOGO\SEC547-Figs-9-0016-001-RPS Diver VP Locations 2019.mxd

Key

- Site Boundary
- Turbine
- + Strathy North Wind Farm
- + Strathy Wood Proposed Turbines
- Lochs For Breeding Diver Survey



Scale 1:48,000 @ A3

Figure 5.10
RPS Diver Loch Survey ID System

Strathy South Wind Farm
EIAR 2020

W:\85475EC - SSE, Strathy South Breeding Season Data Processing\Technical\Graphics\GIS\MXDs\Figures\Chapter Figures - NO RPS LOGO\SEC547-Figs-10-0009-001 RPS Diver Loch Survey ID System.mxd