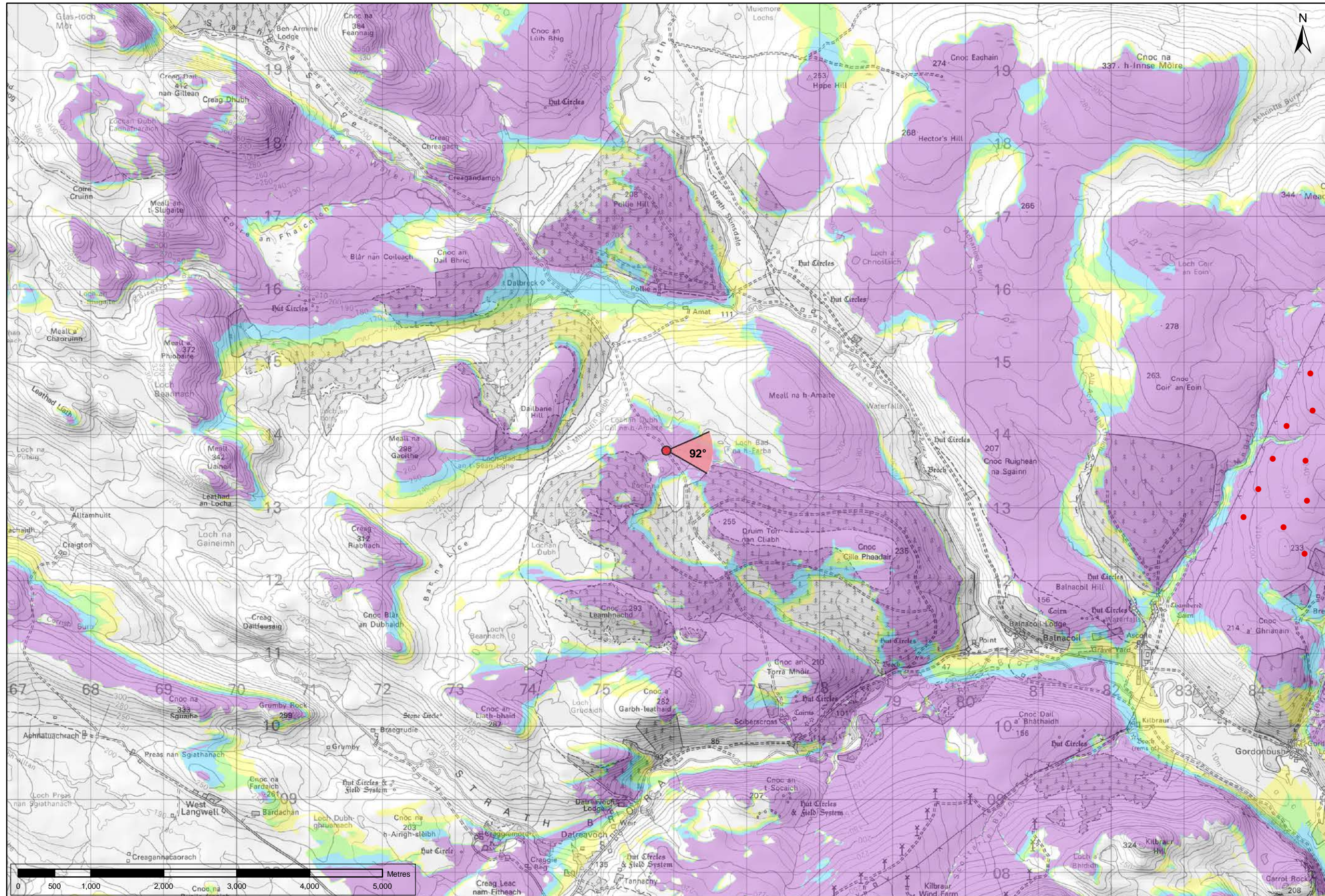





Viewpoint Location Plan Baseline Panorama
Scale: 1:150,000



Viewpoint Location Plan
Scale: 1:50,000 (Blade Tip ZTV)

Note:
1. ZTV: Created using ESRI ArcGIS 10.2.2 software using the following data and parameters:
Blade tip height: 115/130m
DTM Data: OS Terrain 5. Resampled to a 10m grid.
Observer height: 1.5m
No surface features, such as buildings or trees, were included in the analysis.
Earth curvature and light refraction has been included in calculations.
2. © Crown copyright and database rights 2015 Ordnance Survey 10034870.



optimised environments

Key

- Gordonbush Extension Turbine
- 90 degree field of view viewpoint
- 53.5 degree field of view viewpoint

Wind Farm Status (1:150,000 only):

- Turbine Locations
- Gordonbush Extension Site Boundary
- Operational
- Consented
- Application
- Scoping

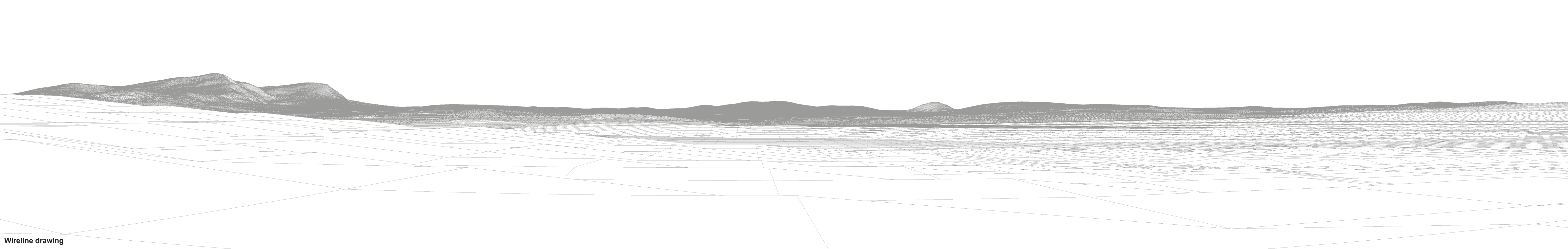
Gordonbush Extension Blade Tip ZTV

No. of turbines that are theoretically visible

1 - 4
5 - 8
9 - 12
13 - 16

Figure: 7.28a
SNH VIEWPOINT 12:
TRACK TO BEN ARMINE LODGE

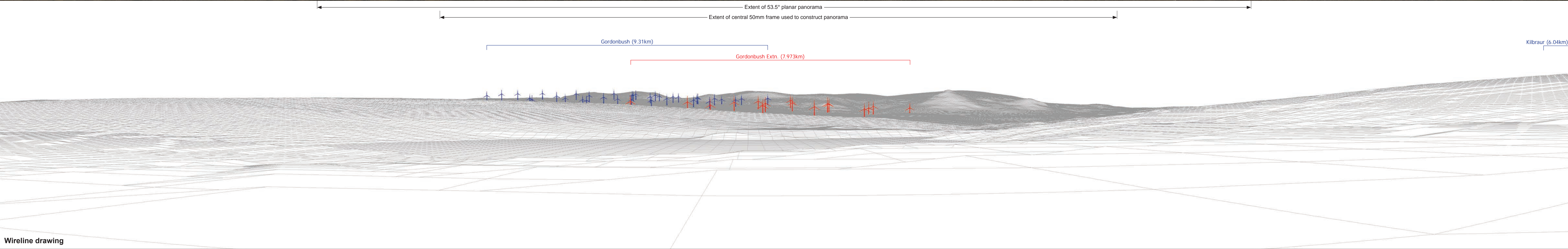
Gordonbush Extension Wind Farm
Environmental Statement





Baseline photograph

This image provides landscape and visual context only



Wireline drawing

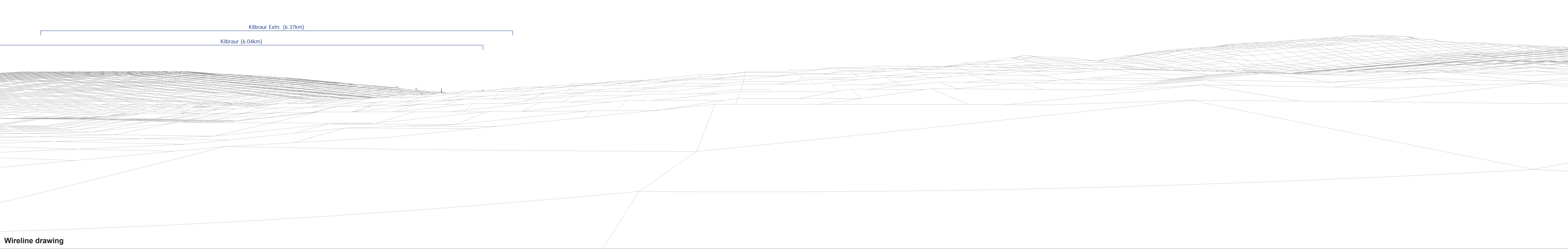
OS reference:	275899 E 913789 N	Horizontal field of view:	90° (cylindrical projection)	Camera:	Canon EOS 5D Mk2
Eye level:	204.5 m AOD	Principal distance	522 mm	Lens:	50mm (Canon EF 50mm f/1.4)
Direction of view:	92°			Camera height:	1.5 m AGL
Nearest turbine:	7.973 km			Date and time:	31/08/2014 09:00

Figure: 7.28b(ii)
SNH Viewpoint 12: Track to Ben Armine Lodge



Baseline photograph

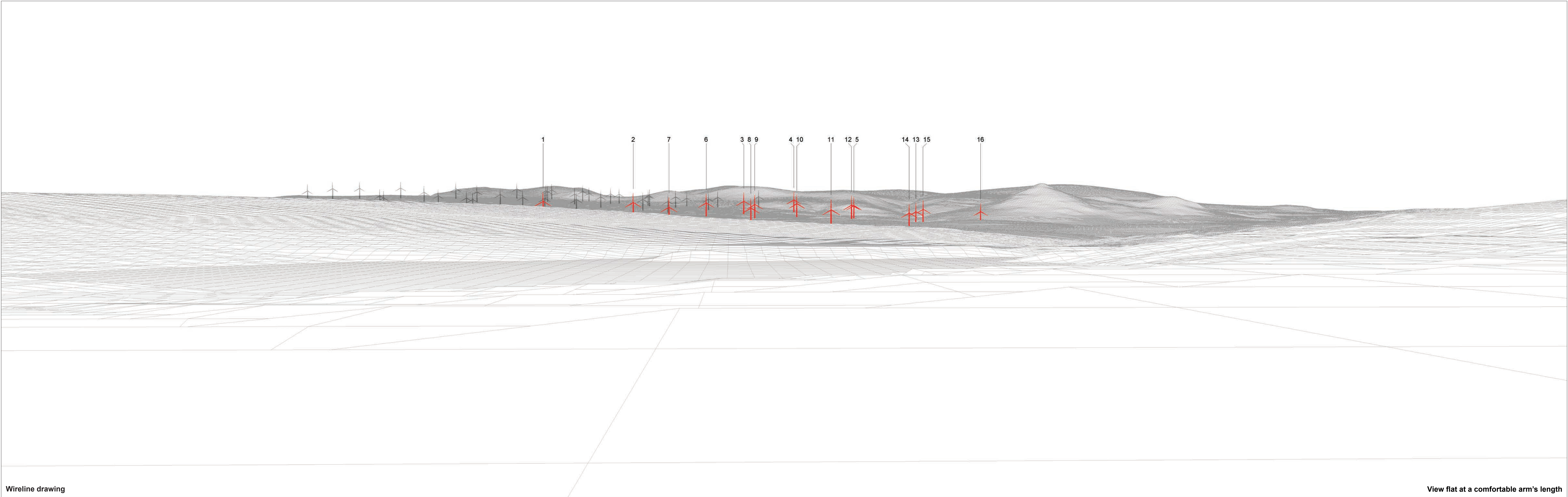
This image provides landscape and visual context only



Wireline drawing

OS reference:	275899 E 913789 N	Horizontal field of view:	90° (cylindrical projection)	Camera:	Canon EOS 5D Mk2
Eye level:	204.5 m AOD	Principal distance	522 mm	Lens:	50mm (Canon EF 50mm f/1.4)
Direction of view:	182°			Camera height:	1.5 m AGL
Nearest turbine:	7.973 km			Date and time:	31/08/2014 09:00

Figure: 7.28b(iii)
SNH Viewpoint 12: Track to Ben Armine Lodge



Wireline drawing

View flat at a comfortable arm's length

Figure: 7.28c
SNH Viewpoint 12: Track to Ben Armine Lodge



Photomontage (Gordonbush Operational turbines have been montaged)

View flat at a comfortable arm's length

OS reference:	275899 E 913789 N	Horizontal field of view:	53.5° (planar projection)	Camera:	Canon EOS 5D Mk2
Eye level:	204.5 m AOD	Principal distance	812.5 mm	Lens:	50mm (Canon EF 50mm f/1.4)
Direction of view:	92°	Paper size:	841 x 297 mm (half A1)	Camera height:	1.5 m AGL
Nearest turbine:	7.973 km	Correct printed image size:	820 x 260 mm	Date and time:	31/08/2014 09:00

Figure: 7.28d
SNH Viewpoint 12: Track to Ben Armine Lodge