

Key

- Site Boundary
- Turbine
- 40km Study Area
- 20km Detailed Study Area
- 5km Distance Radii
- Cairngorms National Park Boundary (CNP)
- National Scenic Area (NSA)
- Wild Land Area (WLA)
- Site Included on the Inventory of Gardens and Designed Landscapes (GDL)
- Special Landscape Area (SLA)

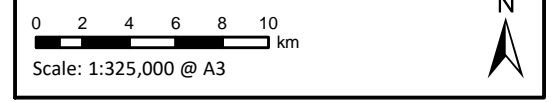


Figure 7.2.1
Designated and Protected Landscapes

Cloiche Wind Farm
EIA Report