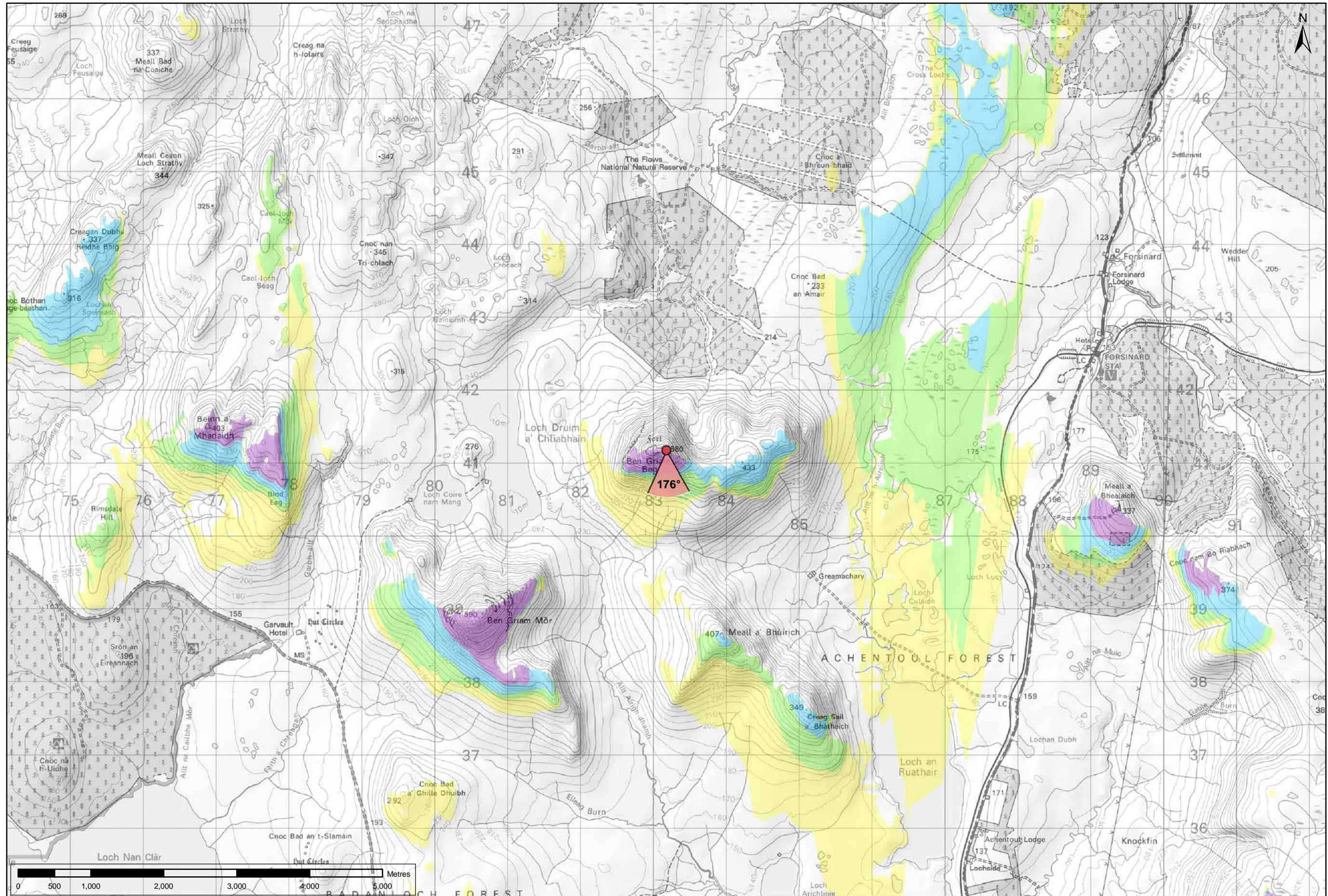


Viewpoint Location Plan Baseline Panorama  
Scale: 1:150,000



Viewpoint Location Plan  
Scale: 1:50,000 (Blade Tip ZTV)

**Note:**  
1. ZTV: Created using ESRI ArcGIS 10.2.2 software using the following data and parameters:  
Blade tip height: 115/130m  
DTM Data: OS Terrain 5. Resampled to a 10m grid.  
Observer height: 1.5m  
No surface features, such as buildings or trees, were included in the analysis.  
Earth curvature and light refraction has been included in calculations.  
2. © Crown copyright and database rights 2015 Ordnance Survey 10034870.

**Key**

- Gordonbush Extension Turbine
- ◀ 90 degree field of view viewpoint
- ◀ 53.5 degree field of view viewpoint

**Wind Farm Status (1:150,000 only):**

- Turbine Locations
- ◀ Gordonbush Extension Site Boundary
- ◀ Operational
- ◀ Consented
- ◀ Application
- ◀ Scoping

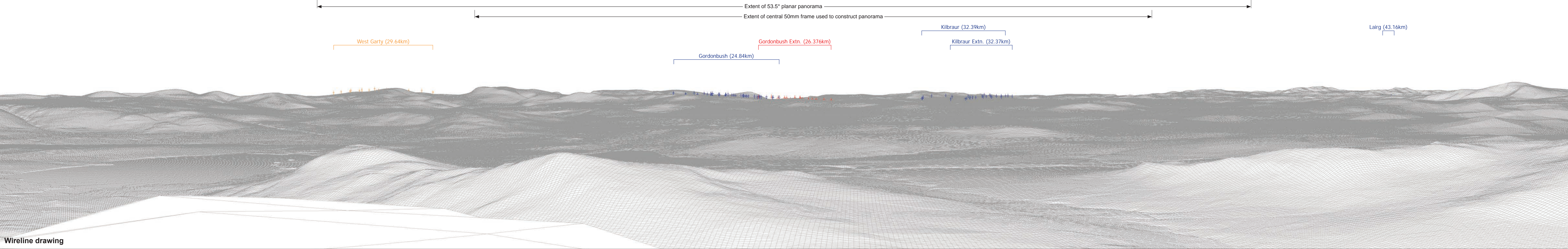
**Gordonbush Extension Blade Tip ZTV**

No. of turbines that are theoretically visible

- ◀ 1 - 4
- ◀ 5 - 8
- ◀ 9 - 12
- ◀ 13 - 16

**Figure: 7.33a**  
**SNH VIEWPOINT 17:**  
**BEN GRIAM BEG**



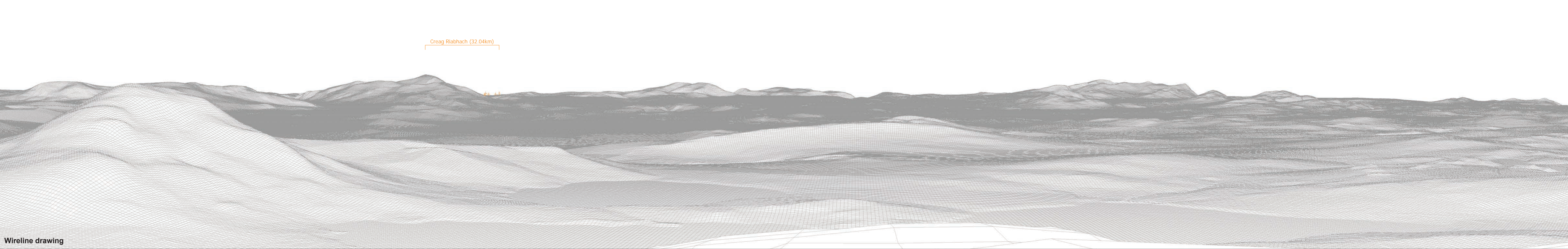






Baseline photograph

This image provides landscape and visual context only



Wireline drawing

OS reference:	283180 E 941176 N	Horizontal field of view:	90° (cylindrical projection)	Camera:	Canon EOS 5D Mk2
Eye level:	577.5 m AOD	Principal distance	522 mm	Lens:	50mm (Canon EF 50mm f/1.4)
Direction of view:	266°			Camera height:	1.5 m AGL
Nearest turbine:	26.376 km			Date and time:	02/09/2014 14:00

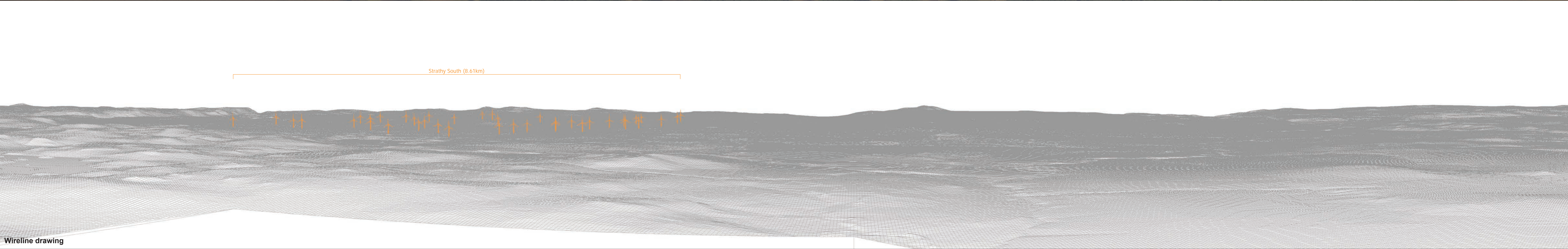
Figure: 7.33b(ii)  
SNH Viewpoint 17: Ben Grian Beg





Baseline photograph

This image provides landscape and visual context only



Wireline drawing

OS reference:	283180 E 941176 N	Horizontal field of view:	90° (cylindrical projection)	Camera:	Canon EOS 5D Mk2
Eye level:	577.5 m AOD	Principal distance	522 mm	Lens:	50mm (Canon EF 50mm f/1.4)
Direction of view:	356°			Camera height:	1.5 m AGL
Nearest turbine:	26.376 km			Date and time:	02/09/2014 14:00

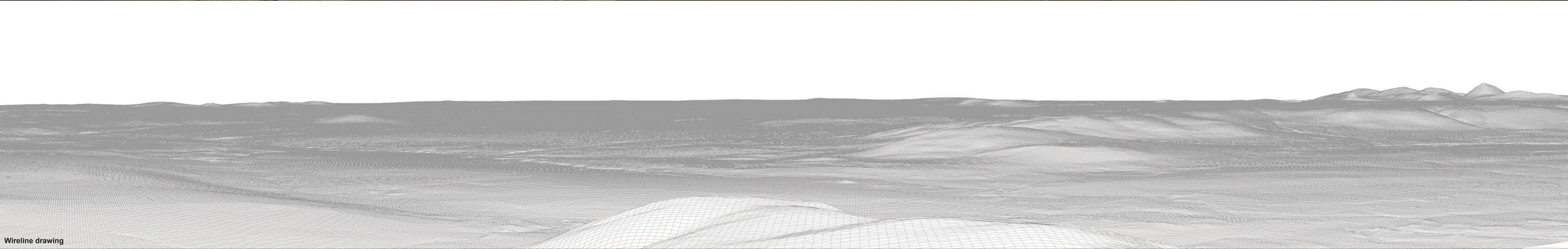
Figure: 7.33b(iii)  
SNH Viewpoint 17: Ben Griam Beg





Baseline photograph

This image provides landscape and visual context only



Wireline drawing

OS reference:	283180 E 941176 N	Horizontal field of view:	90° (cylindrical projection)	Camera:	Canon EOS 5D Mk2
Eye level:	577.5 m AOD	Principal distance	522 mm	Lens:	50mm (Canon EF 50mm f/1.4)
Direction of view:	86°			Camera height:	1.5 m AGL
Nearest turbine:	26.376 km			Date and time:	02/09/2014 14:00

Figure: 7.33b(iiii)  
SNH Viewpoint 17: Ben Grian Beg