









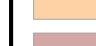
Key

-  20 km Detailed Study Area
-  5 km Distance Radii

Wild Land

-  WLA 39 - East Halladale Flows
-  WLA Assessment Location
-  WLA Assessment Location Access Routes
-  WLA Section Divider

Jenks 8 Classification

-  Class 1
-  Class 2
-  Class 3
-  Class 4
-  Class 5
-  Class 6
-  Class 7
-  Class 8

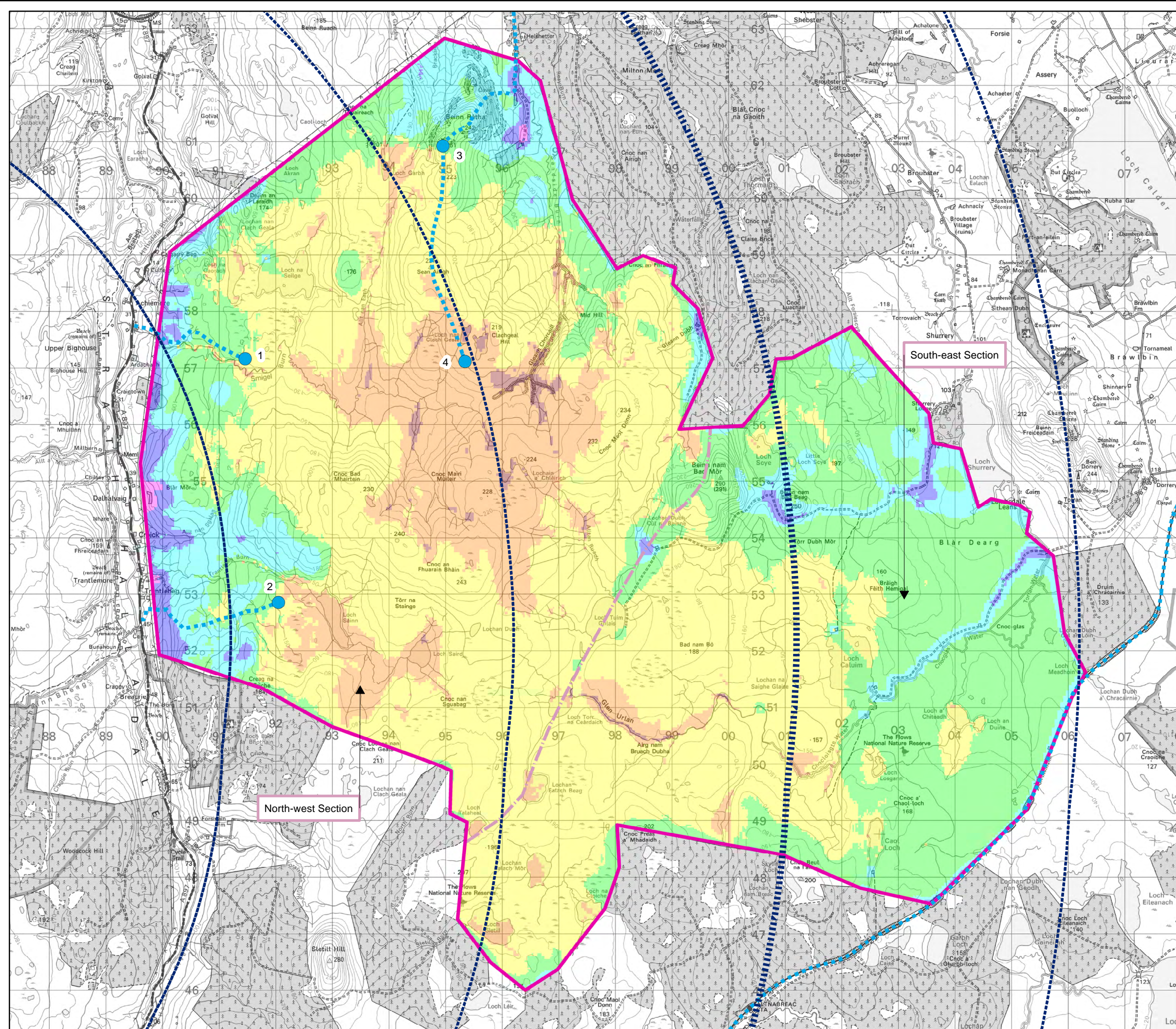
Scale 1:65,000 @ A3

0 0.35 0.7 1.4 2.1 2.8 Kilometers










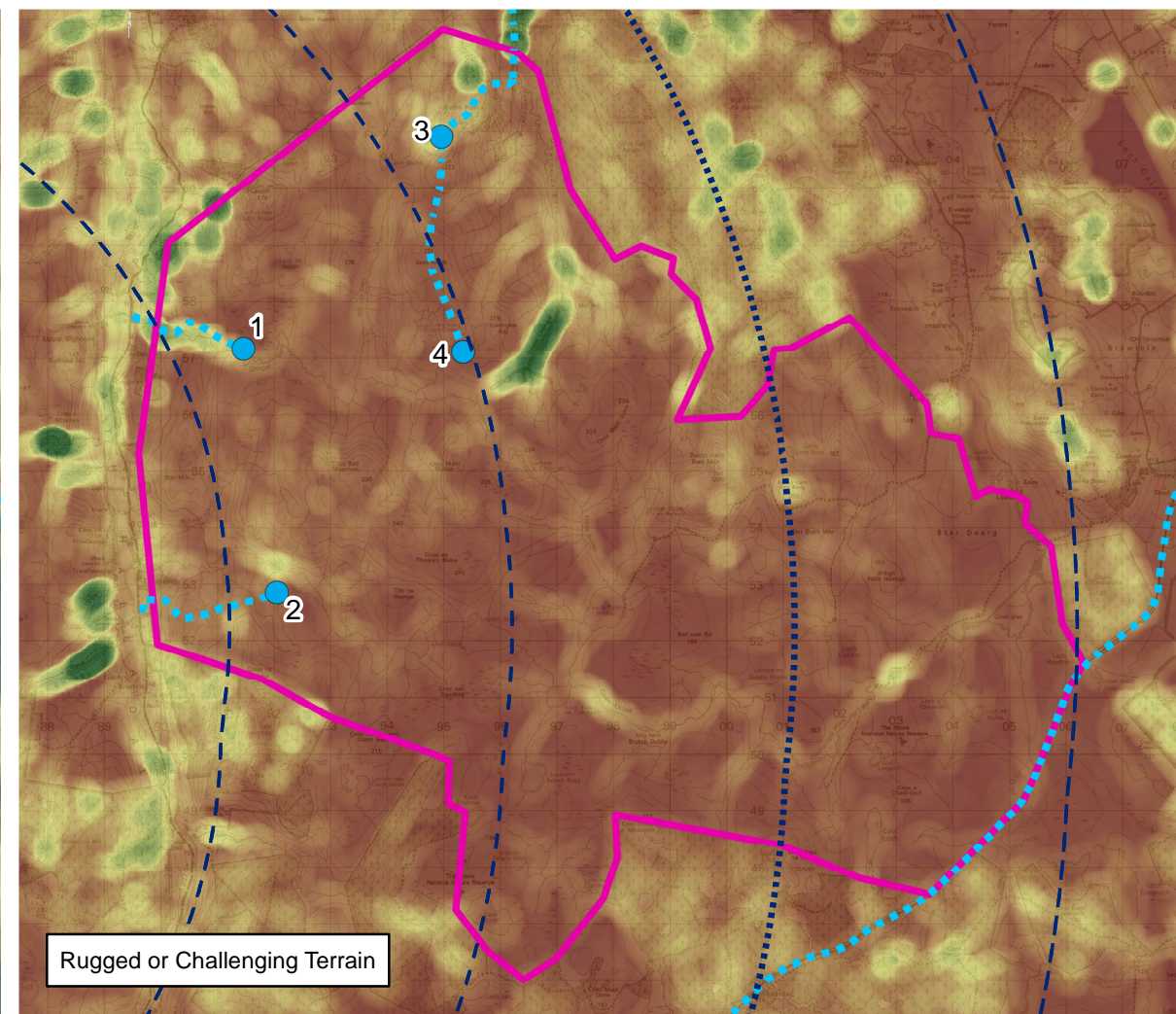
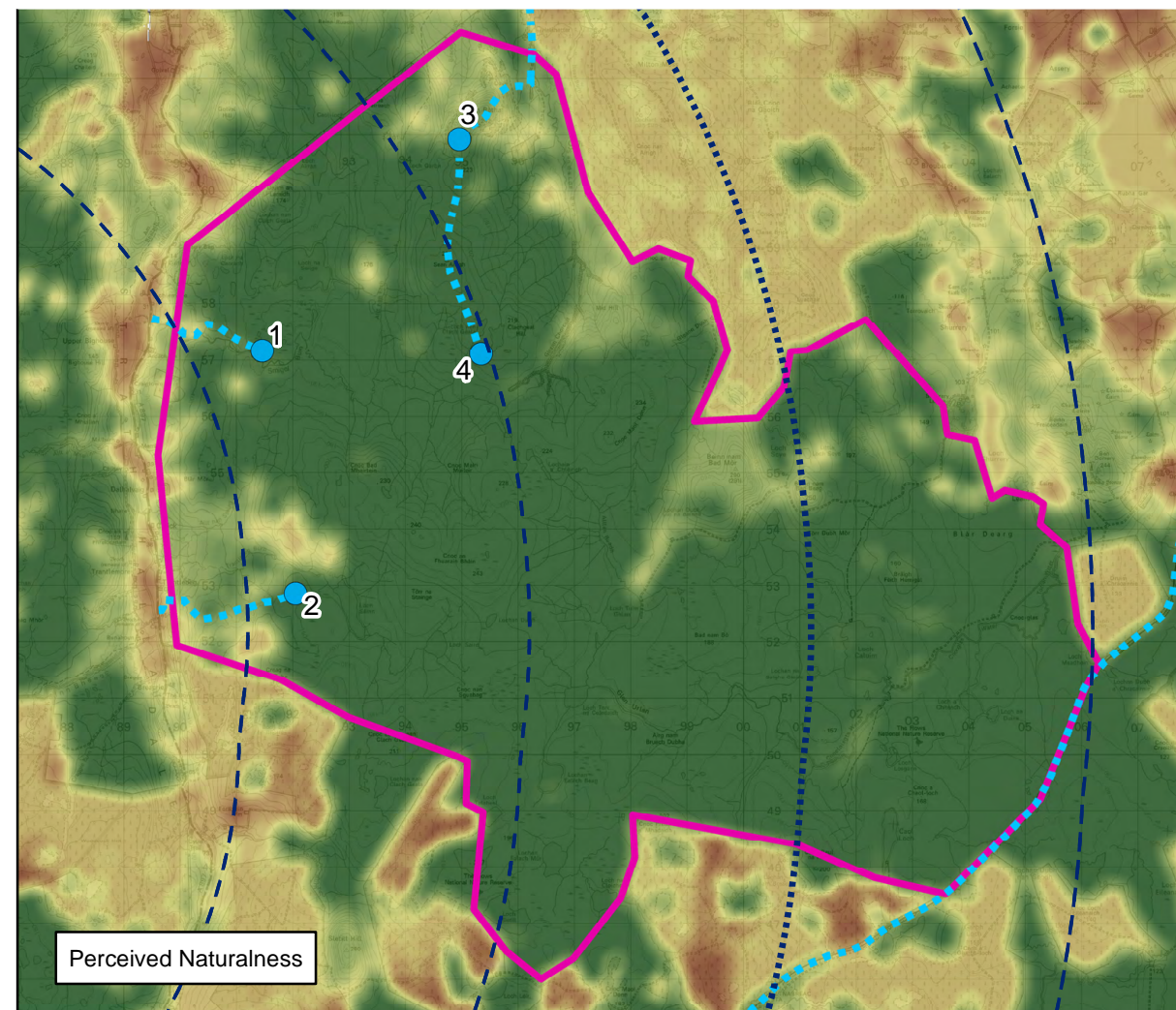
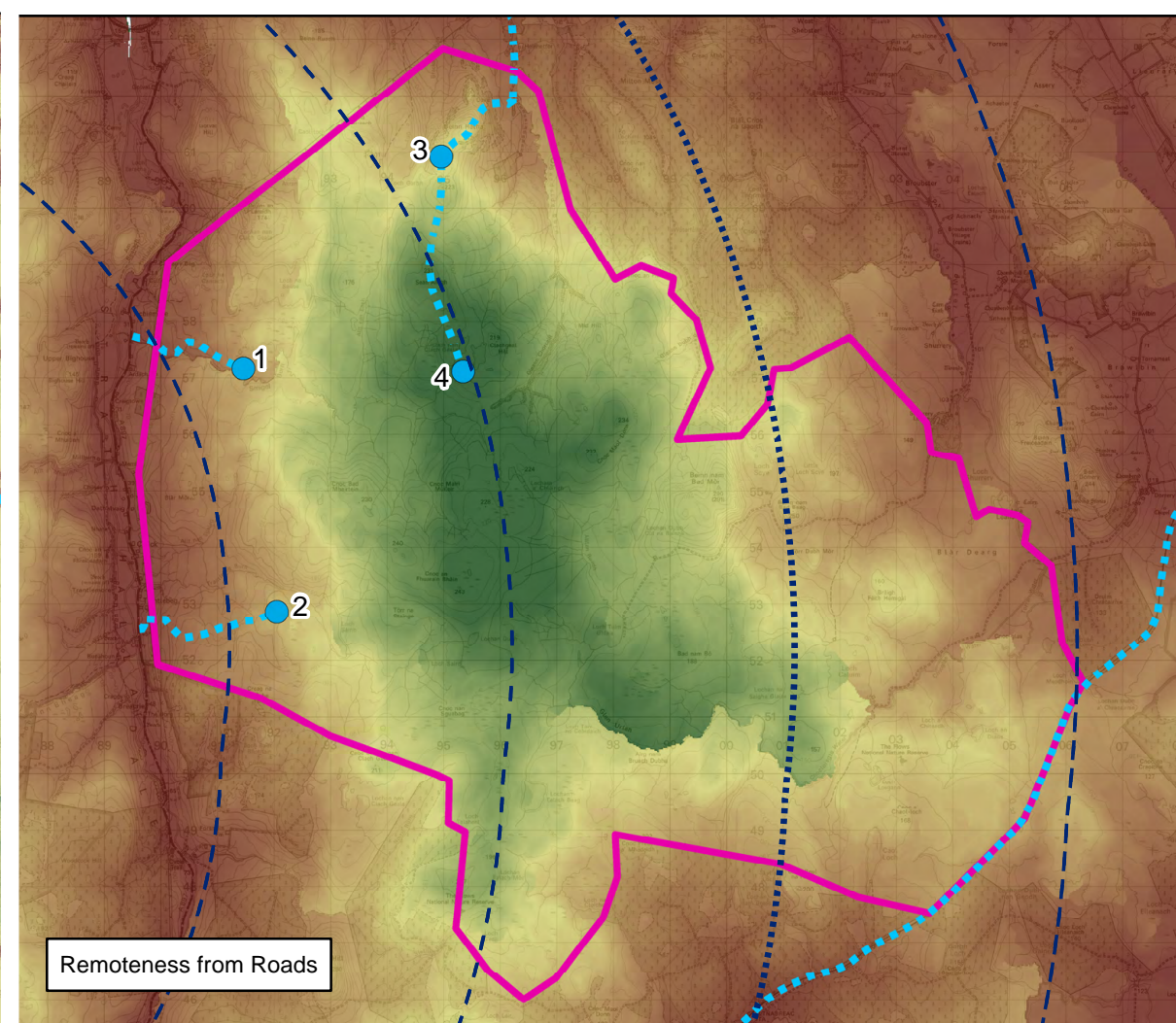
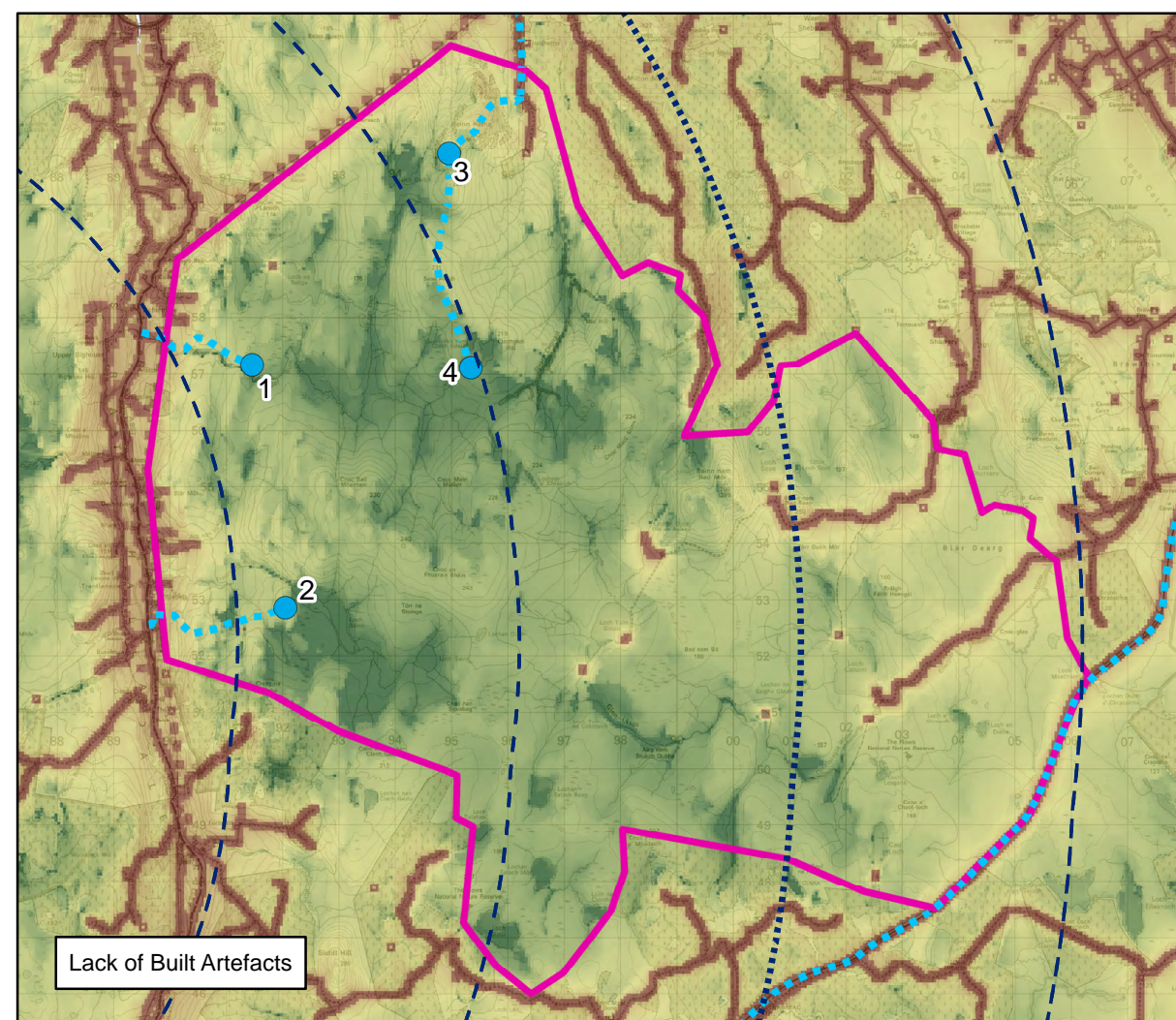
TA Figure 4.9.2
Map of Relative Wildness -
Jenks 8 Interpretation

Strathly South Wind Farm
EIAR 2020

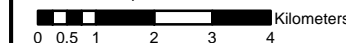


Key

-  20 km Detailed Study Area
 -  5 km Distance Radii
 -  WLA 39 - East Halladale Flows
 -  WLA Assessment Locations
 -  WLA Assessment Location Access Routes
- Strength of Attributes**
-  High
-  Low



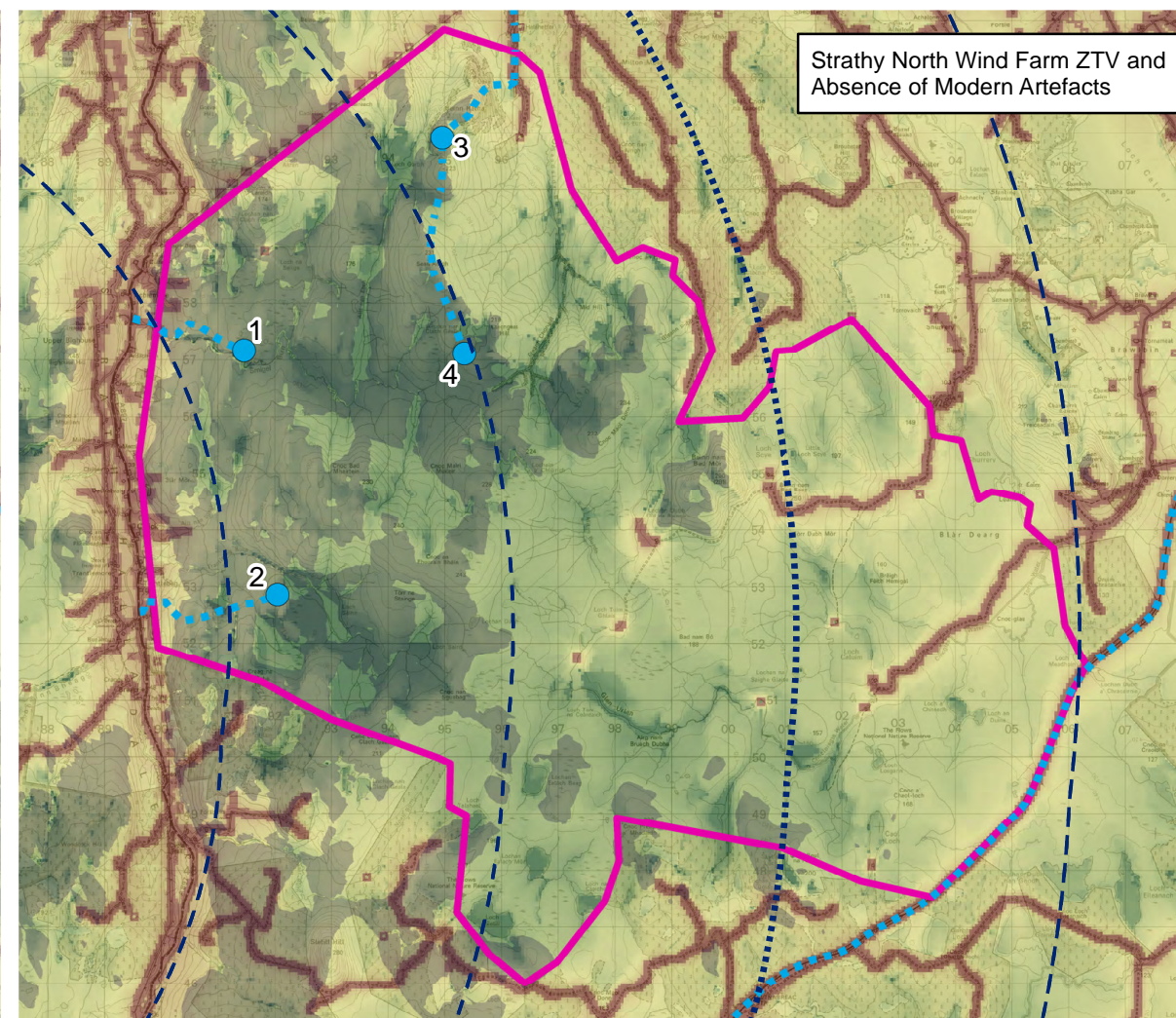
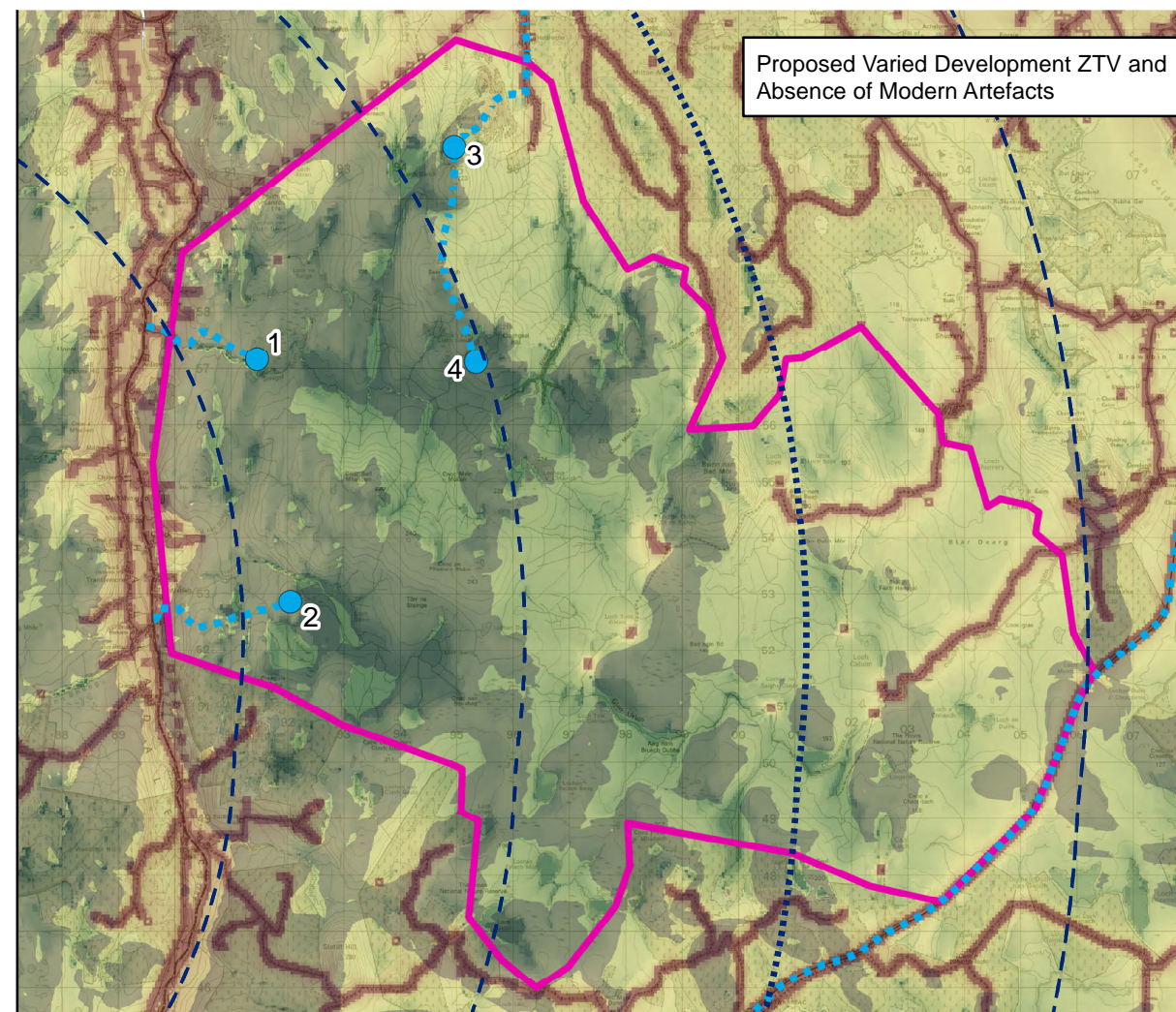
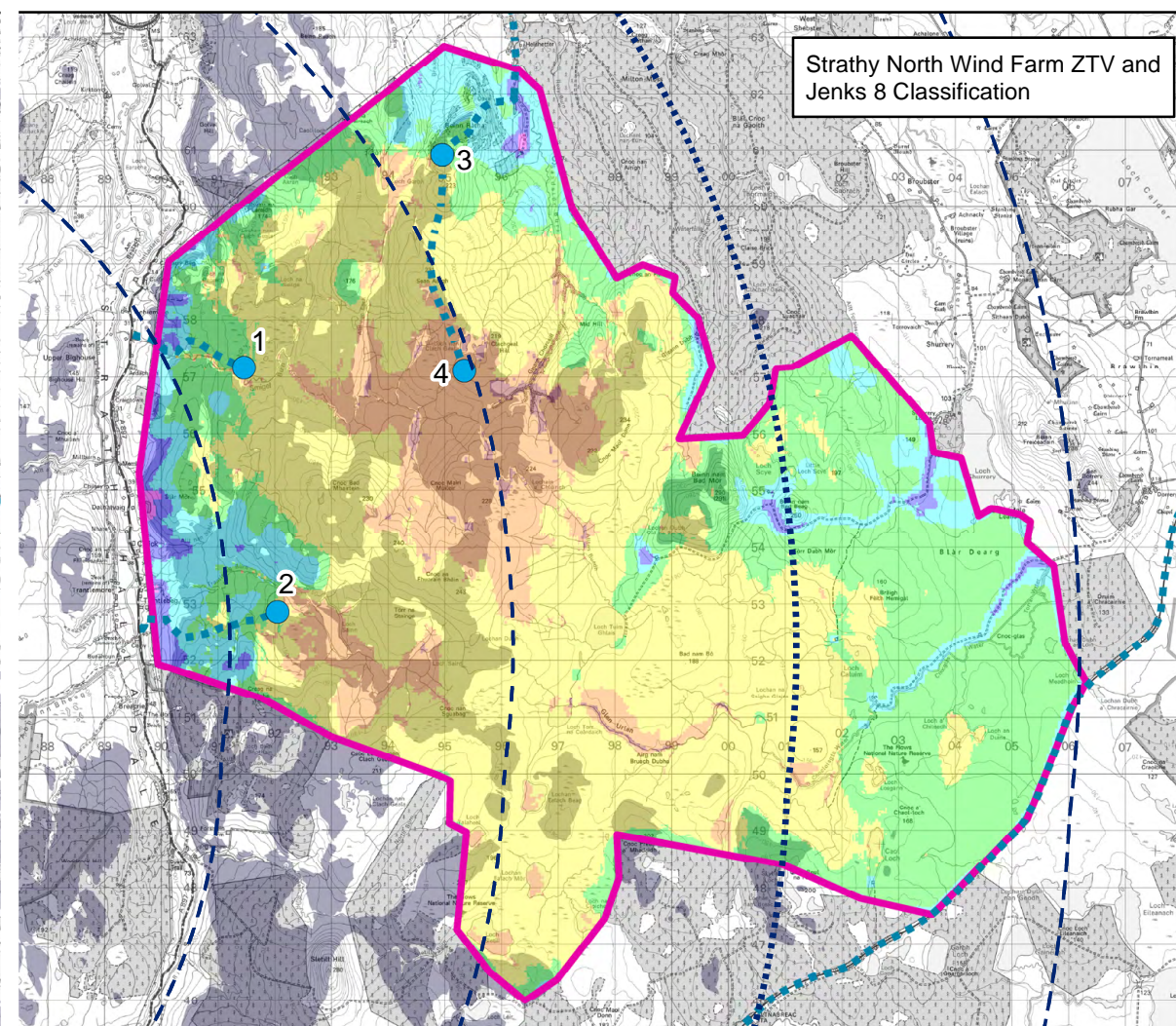
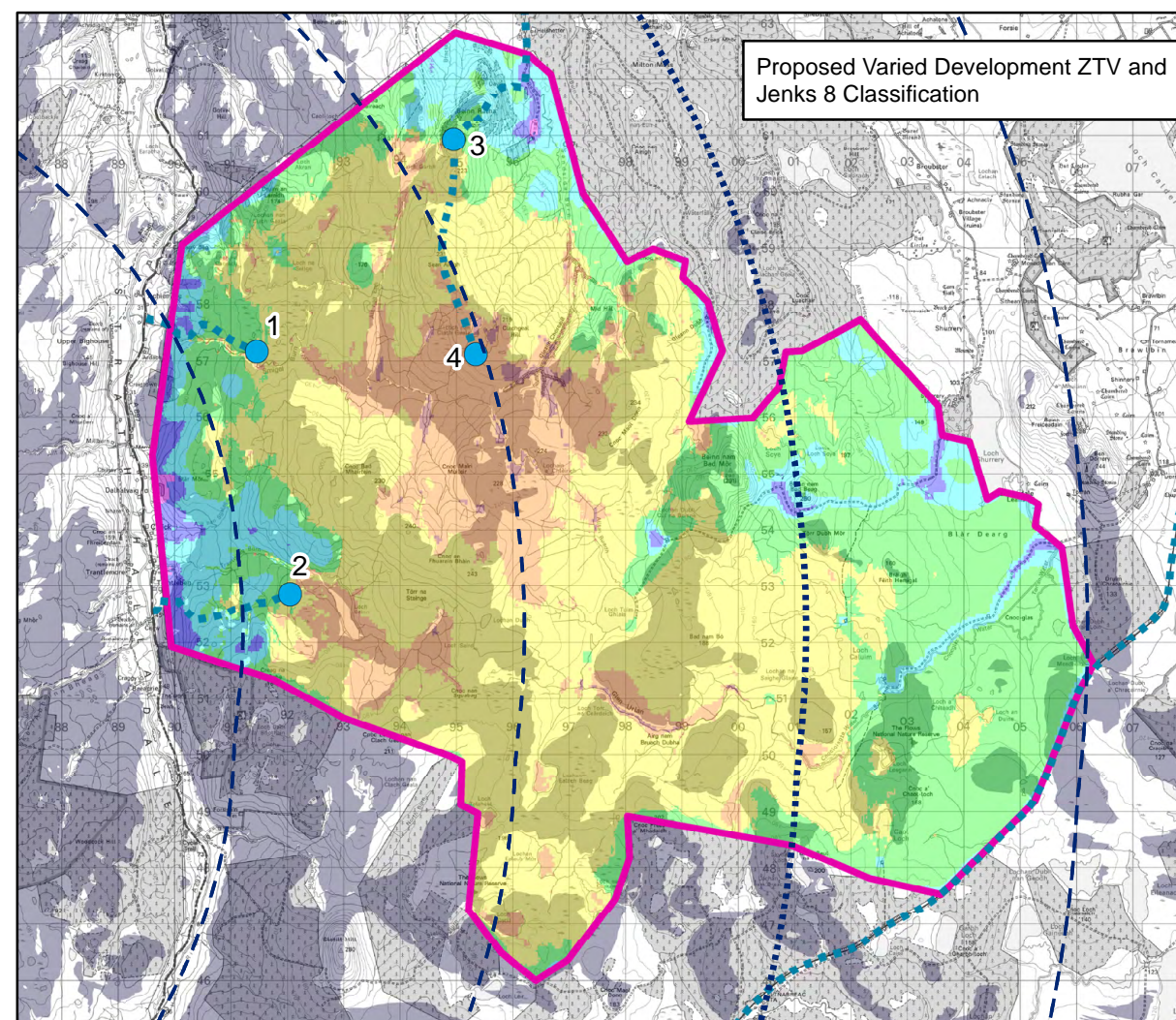
Scale 1:130,000@ A3

 Kilometers






TA Figure 4.9.3
SNH Wild Land Attribute Mapping




Strathly South Wind Farm
EIAR 2020






Key

-  20 km Detailed Study Area
-  5 km Distance Radii
-  Zone of Theoretical Visibility (ZTV)

Jenks 8 Classification

-  Class 1
-  Class 2
-  Class 3
-  Class 4
-  Class 5
-  Class 6
-  Class 7
-  Class 8

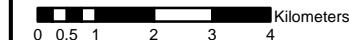
Wild Land

-  WLA 39 - East Halladale Flows
-  WLA Assessment Location
-  WLA Assessment Location Access Routes

Absence of Modern Artefacts

-  High
-  Low

Scale 1:130,000@ A3




TA Figure 4.9.4a
ZTV Overviews: Proposed Varied Development
and Strathy North Wind Farm

Strathy South Wind Farm
EIAR 2020