

Viewpoint Location Plan
Scale: 1:50,000 (Blade Tip ZTV)

Note:
1. **ZTV:** Created using ESRI ArcGIS 10.4 software using the following data and parameters:
Blade tip height: 115/130m
DTM Data: OS Terrain 5. Resampled to a 10m grid.
Observer height: 1.5m
No surface features, such as buildings or trees, were included in the analysis.
Earth curvature and light refraction has been included in calculations.
2. © Crown copyright and database rights 2016 Ordnance Survey 10034870.

Key

- Gordonbush Extension FEI Layout
- 53.5 degree field of view viewpoint
- Gordonbush Turbine Locations

Gordonbush Extension FEI Layout Blade Tip ZTV

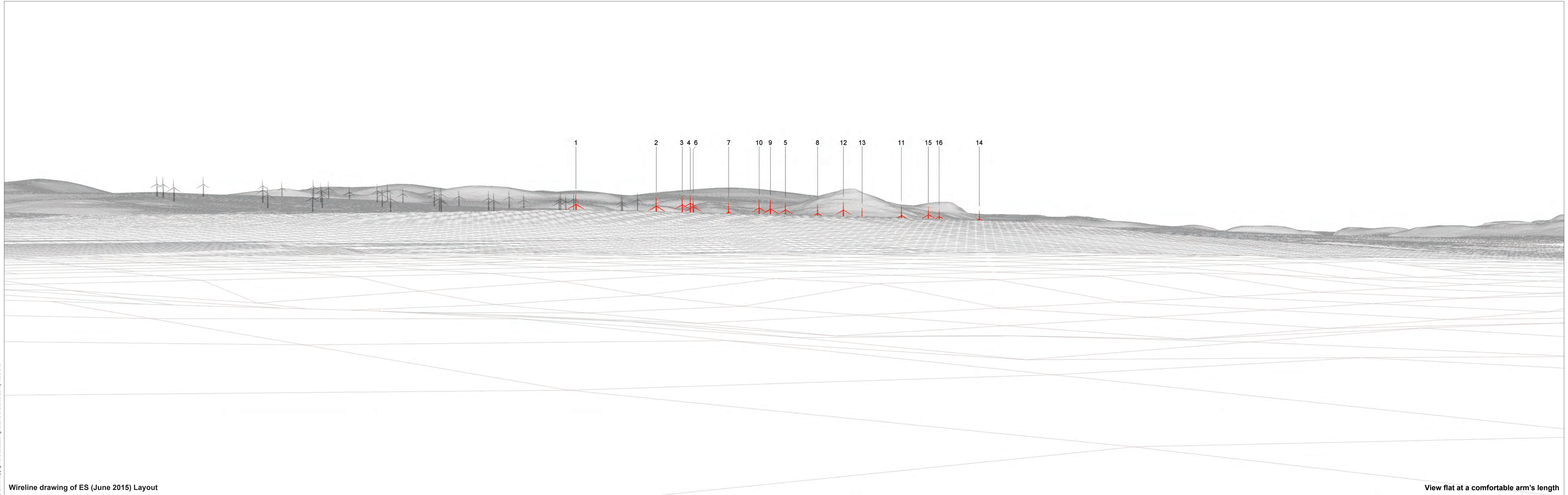
No. of turbines that are theoretically visible

	1 - 4
	5 - 8
	9 - 12
	13 - 15

Figure: 2.18a
SNH VISUALISATIONS VIEWPOINT 11:
HOPE HILL

Gordonbush Extension Wind Farm
FEI

© Crown copyright and database rights 2016 Ordnance Survey 10034670.



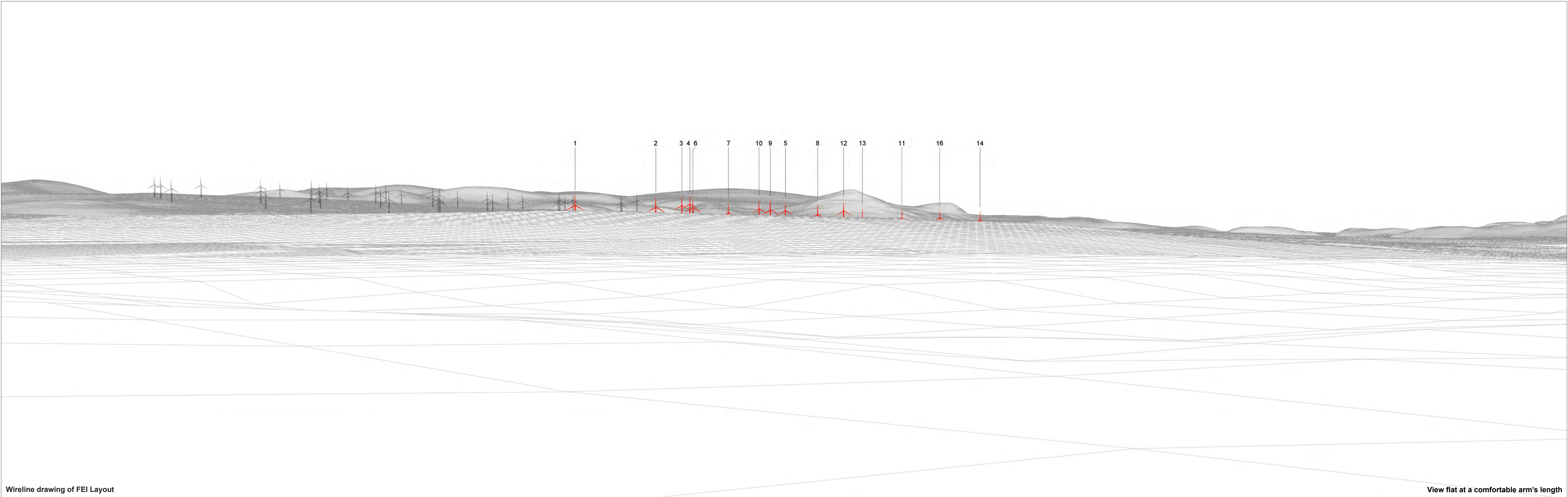
Wireline drawing of ES (June 2015) Layout

View flat at a comfortable arm's length

OS reference:	277861 E 918871 N	Horizontal field of view:	53.5° (planar projection)	Camera:	Canon EOS 5D Mk2
Eye level:	253.5 m AOD	Principal distance:	812.5 mm	Lens:	50mm (Canon EF 50mm f/1.4)
Direction of view:	128°	Paper size:	841 x 297 mm (half A1)	Camera height:	1.5 m AGL
Nearest turbine:	7.968 km	Correct printed image size:	820 x 260 mm	Date and time:	31/08/2014 10:53

Figure: 2.18b ES (June 2015) Layout
SNH Viewpoint 11: Hope Hill

© Crown copyright and database rights 2016 Ordnance Survey 10034670.

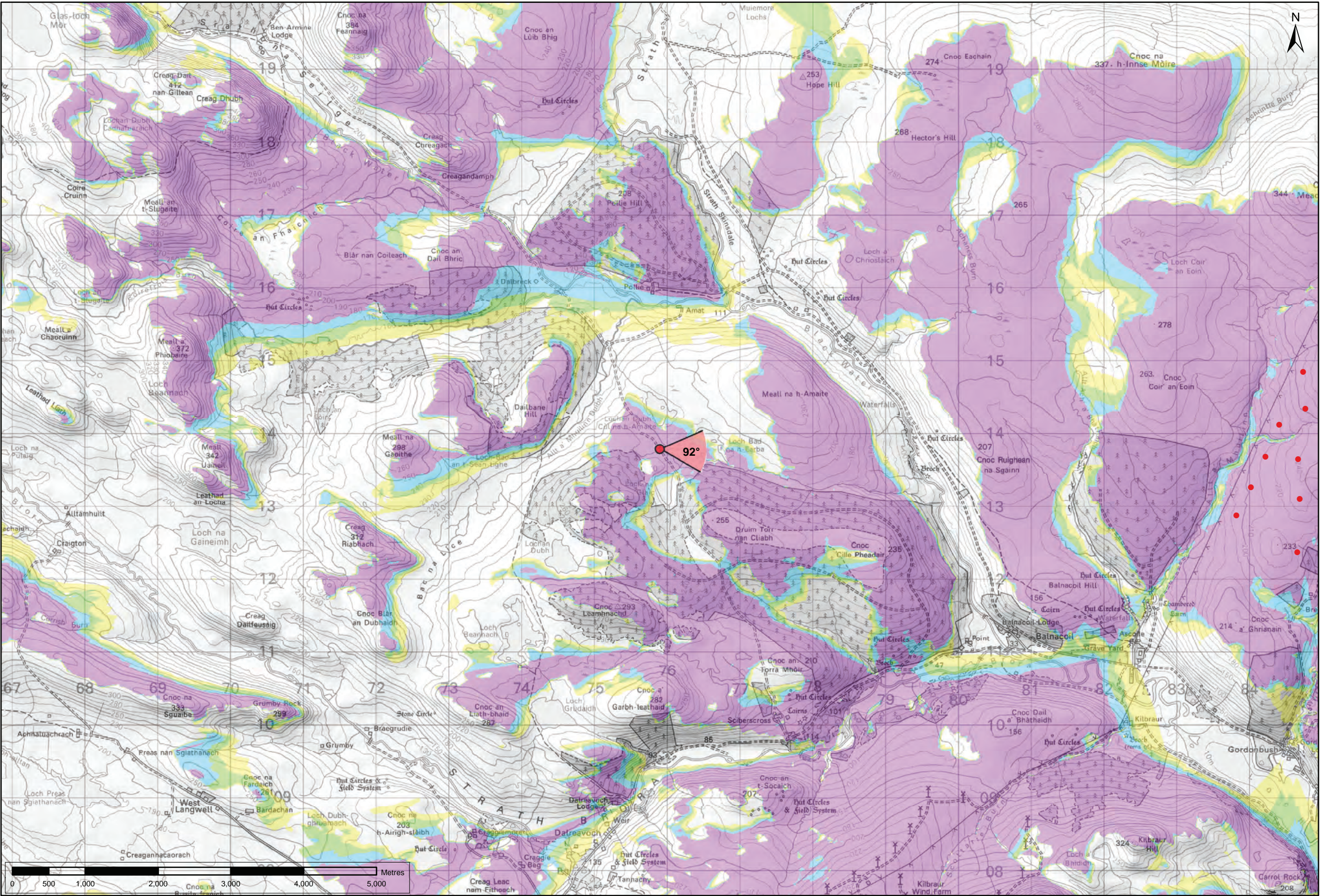


Wireline drawing of FEI Layout

View flat at a comfortable arm's length

OS reference:	277861 E 918871 N	Horizontal field of view:	53.5° (planar projection)	Camera:	Canon EOS 5D Mk2
Eye level:	253.5 m AOD	Principal distance	812.5 mm	Lens:	50mm (Canon EF 50mm f/1.4)
Direction of view:	128°	Paper size:	841 x 297 mm (half A1)	Camera height:	1.5 m AGL
Nearest turbine:	7.968 km	Correct printed image size:	820 x 260 mm	Date and time:	31/08/2014 10:53

Figure: 2.18c FEI Layout
SNH Viewpoint 11: Hope Hill



Viewpoint Location Plan
Scale: 1:50,000 (Blade Tip ZTV)

Note:
1. **ZTV:** Created using ESRI ArcGIS 10.4 software using the following data and parameters:
Blade tip height: 115/130m
DTM Data: OS Terrain 5. Resampled to a 10m grid.
Observer height: 1.5m
No surface features, such as buildings or trees, were included in the analysis.
Earth curvature and light refraction has been included in calculations.
2. © Crown copyright and database rights 2016 Ordnance Survey 10034870.

Key

- Gordonbush Extension FEI Layout
- ▼ 53.5 degree field of view viewpoint
- Gordonbush Turbine Locations

Gordonbush Extension FEI Layout Blade Tip ZTV

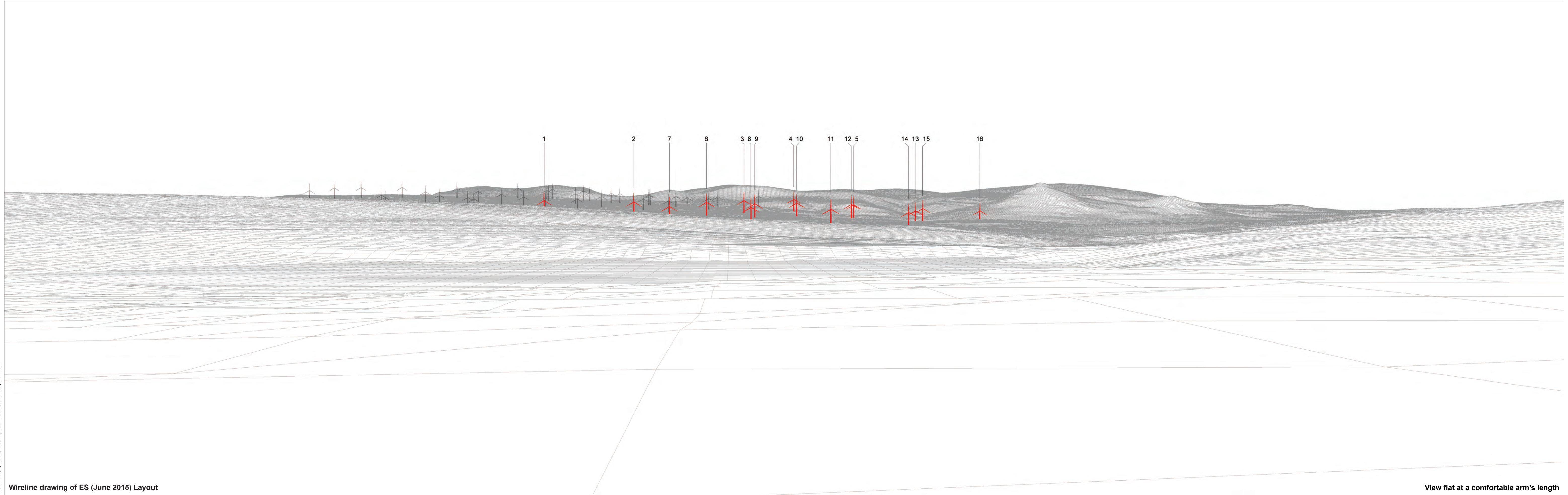
No. of turbines that are theoretically visible

- 1 - 4
- 5 - 8
- 9 - 12
- 13 - 15

Figure: 2.19a
SNH VISUALISATIONS VIEWPOINT 12:
TRACK TO BEN ARMINE LODGE

Gordonbush Extension Wind Farm
FEI

© Crown copyright and database rights 2016 Ordnance Survey 10034870



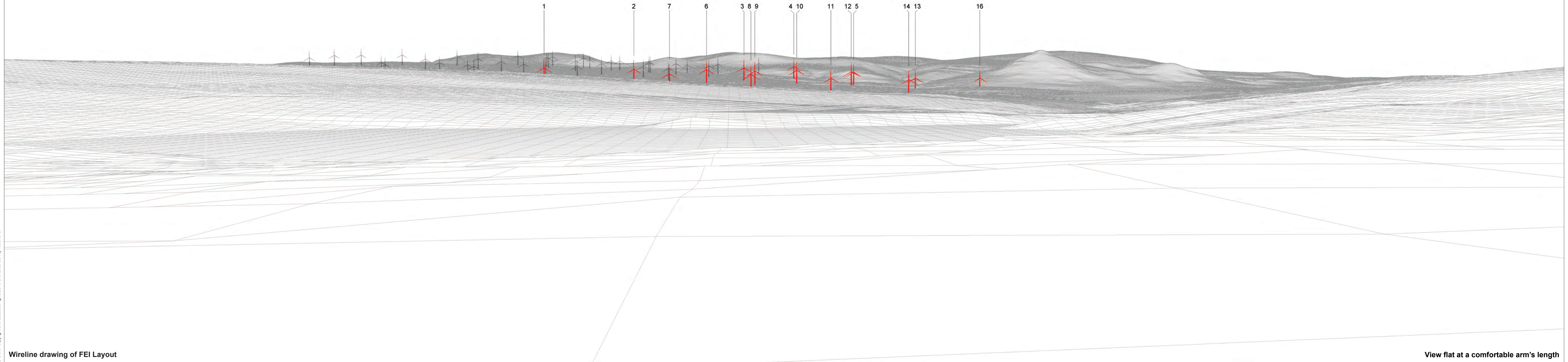
Wireline drawing of ES (June 2015) Layout

View flat at a comfortable arm's length

OS reference:	275899 E 913789 N	Horizontal field of view:	53.5° (planar projection)	Camera:	Canon EOS 5D Mk2
Eye level:	204.5 m AOD	Principal distance:	812.5 mm	Lens:	50mm (Canon EF 50mm f/1.4)
Direction of view:	92°	Paper size:	841 x 297 mm (half A1)	Camera height:	1.5 m AGL
Nearest turbine:	7.973 km	Correct printed image size:	820 x 260 mm	Date and time:	31/08/2014 09:00

Figure: 2.19b ES (June 2015) Layout
SNH Viewpoint 12: Track to Ben Armine Lodge

© Crown copyright and database rights 2016 Ordnance Survey 10034870



Wireline drawing of FEI Layout

View flat at a comfortable arm's length

OS reference:	275899 E 913789 N	Horizontal field of view:	53.5° (planar projection)	Camera:	Canon EOS 5D Mk2
Eye level:	204.5 m AOD	Principal distance:	812.5 mm	Lens:	50mm (Canon EF 50mm f/1.4)
Direction of view:	92°	Paper size:	841 x 297 mm (half A1)	Camera height:	1.5 m AGL
Nearest turbine:	7.973 km	Correct printed image size:	820 x 260 mm	Date and time:	31/08/2014 09:00

Figure: 2.19c FEI Layout
SNH Viewpoint 12: Track to Ben Armine Lodge