

# Welcome

## About this exhibition

Thank you for taking the time to visit our exhibition today about the recently submitted Scoping Report for the Proposed Variations to the consented Achany Extension wind farm. The purpose of this exhibition is to share our proposed amendments and timelines with local communities and interested parties to inform and ultimately gather feedback, ahead of the submission of a Section 36C Variation application to the Scottish Government Energy Consents Unit (ECU) later this year.

We want our exhibitions to be an opportunity for you to meet the team, raise questions or concerns and to share any comments that you might have.

Here at SSE Renewables, we want to continue working in collaboration with the communities around our projects and take all feedback and comments into account. This is important to us at all stages of development.

Please take as much time as you like to view the information boards on display and chat with the project team who are on hand to assist with any questions you may have.







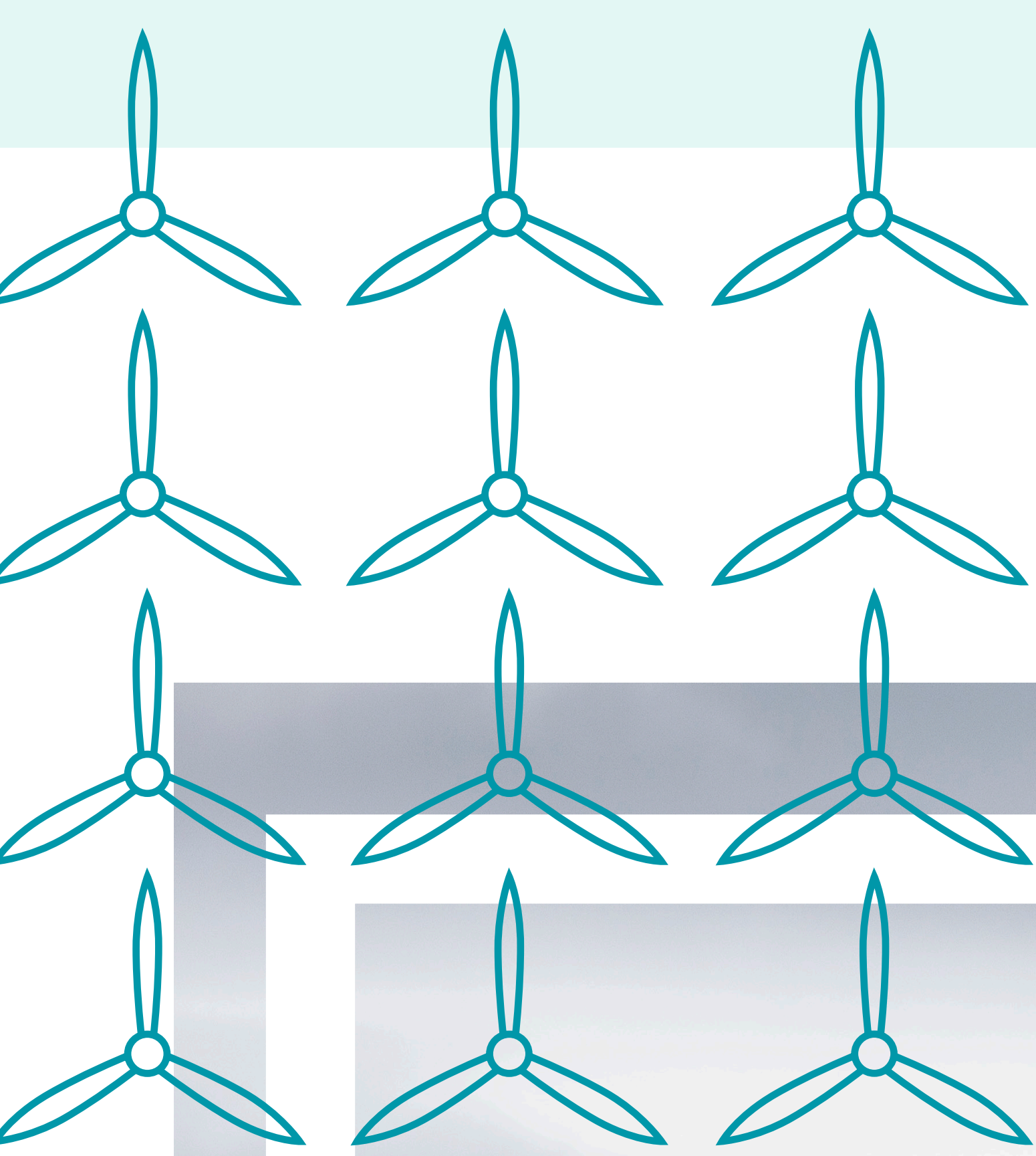
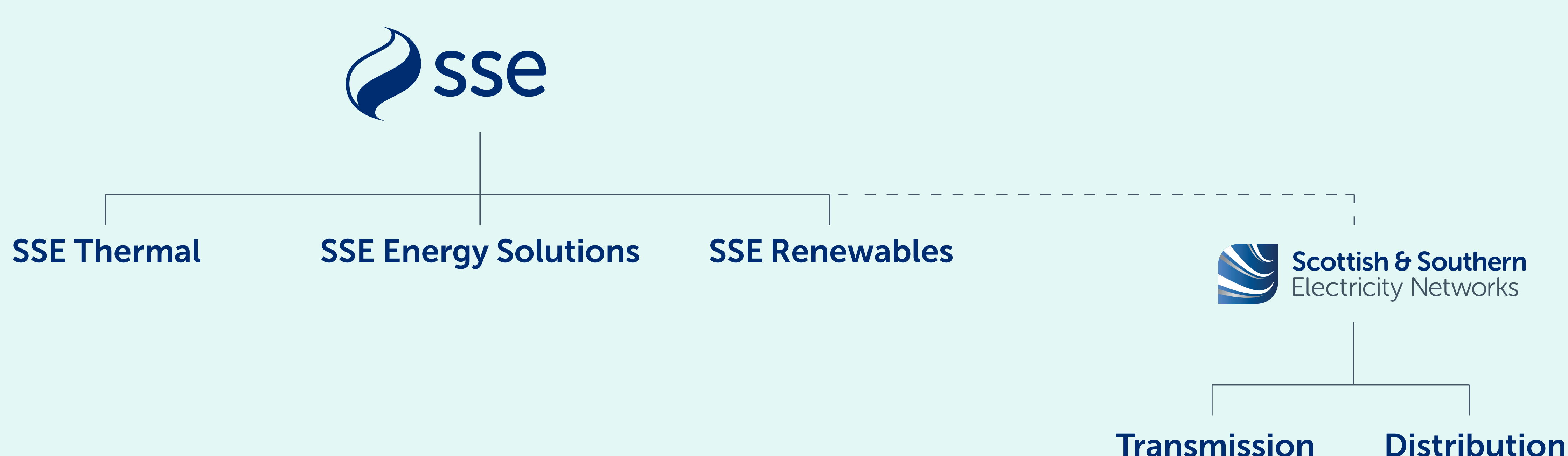
# About SSE Renewables

**SSE Renewables is a leading developer and operator of renewable energy generation, focusing on onshore and offshore wind, hydro, solar and battery storage.**

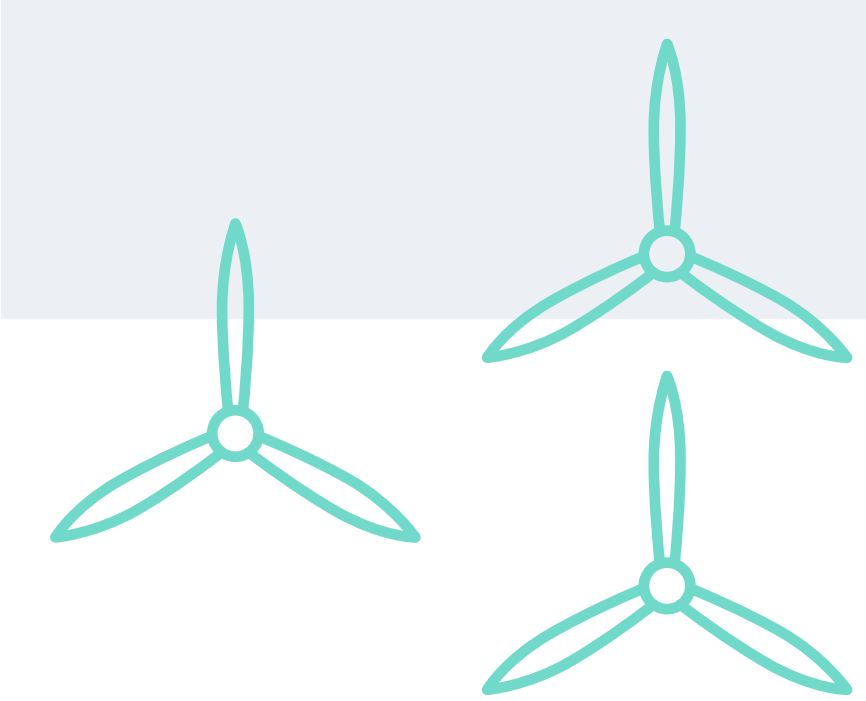
Part of energy infrastructure company SSE plc, UK-listed in the FTSE100, it is delivering clean power assets to increase SSE's operational renewable generation capacity as part of a five-year clean energy plan to 2027, the ~£17.5bn Net Zero Acceleration Programme (NZAP) Plus. This includes delivery of the world's largest offshore wind farm in construction, the 3.6GW Dogger Bank Wind Farm.

SSE Renewables has a team of around 2,000 renewable energy professionals with a passion for championing clean energy delivery, each based across the markets in which it operates.

It operates across its core UK and Ireland markets, as well as in carefully selected international markets in Continental Europe and Japan.



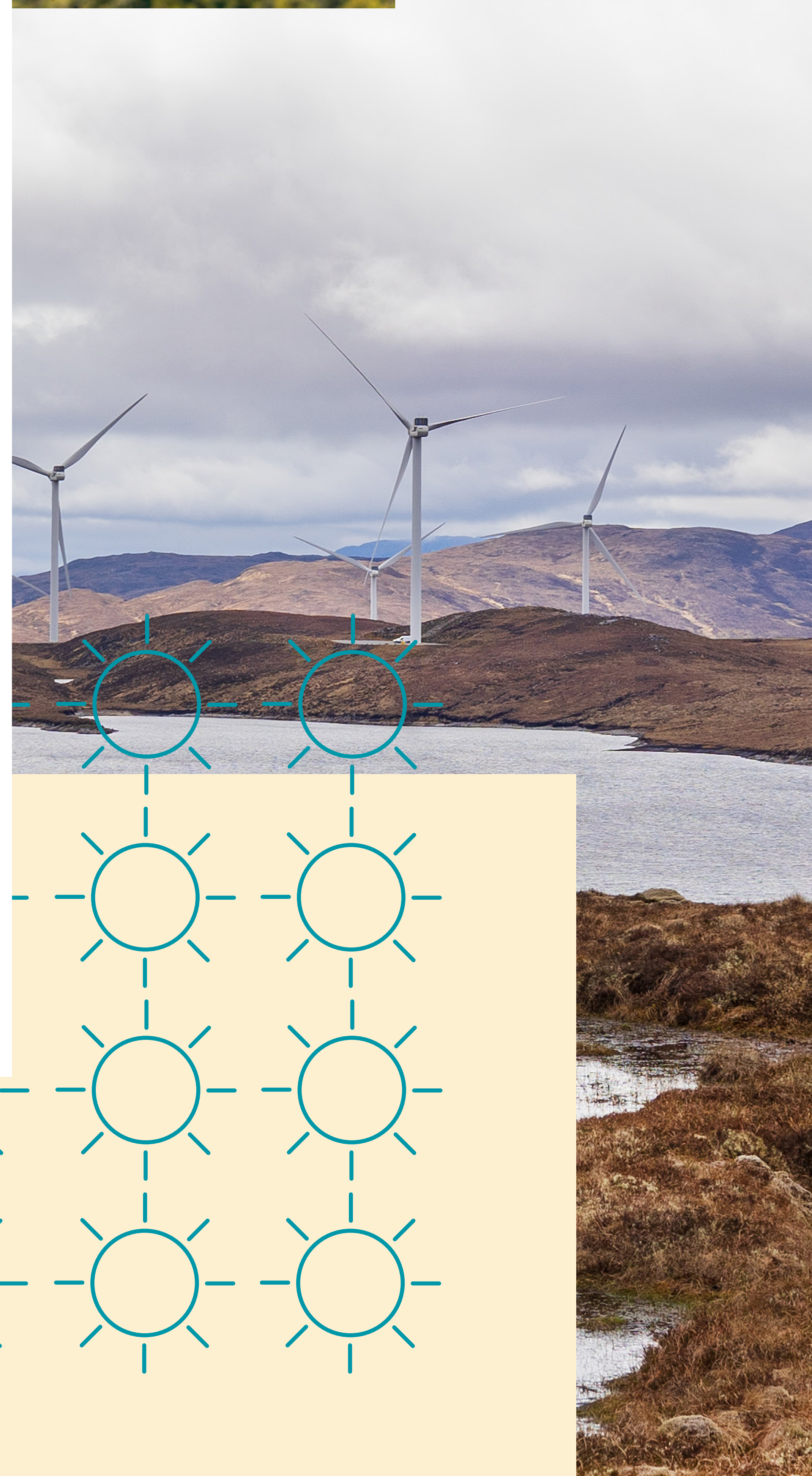
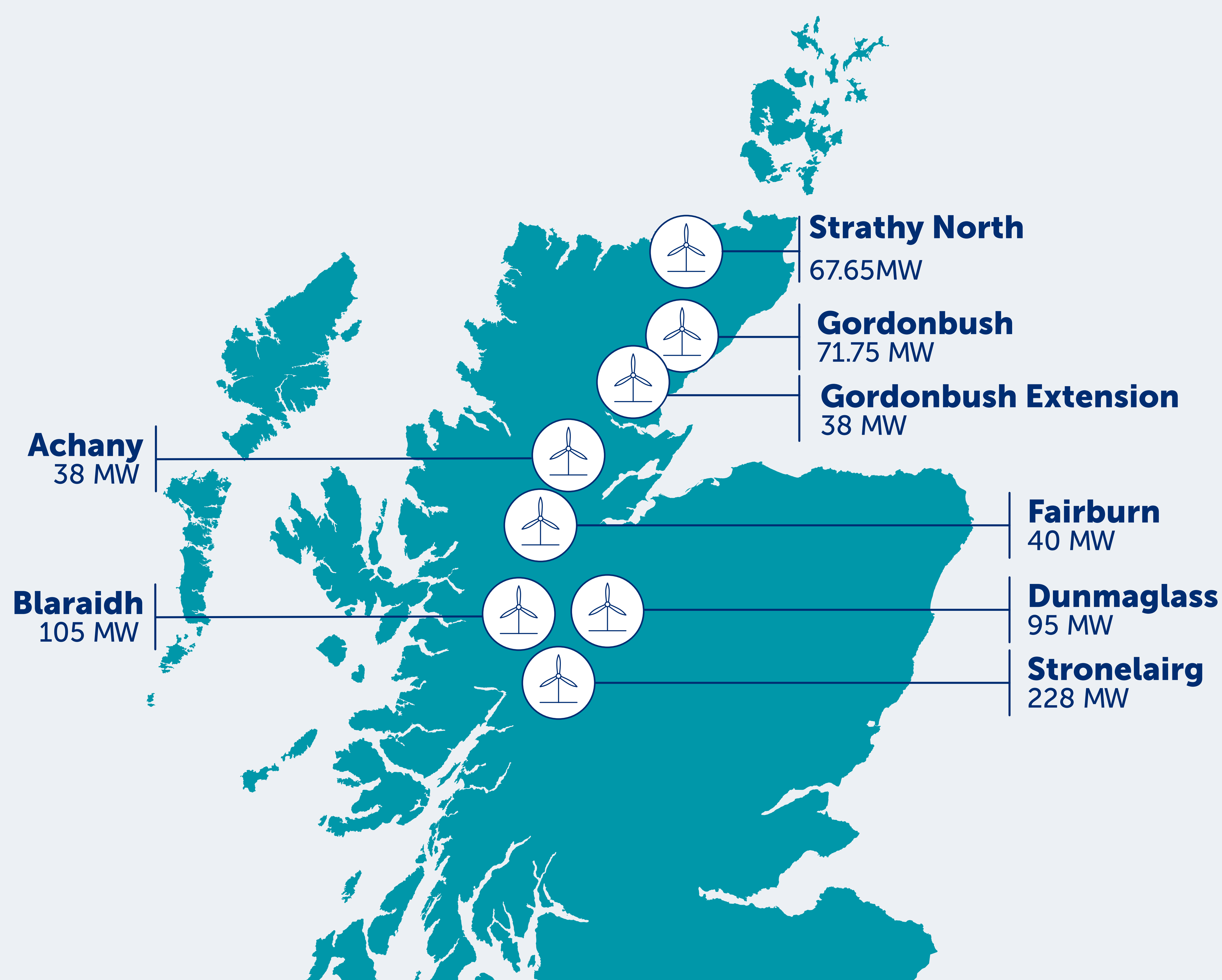




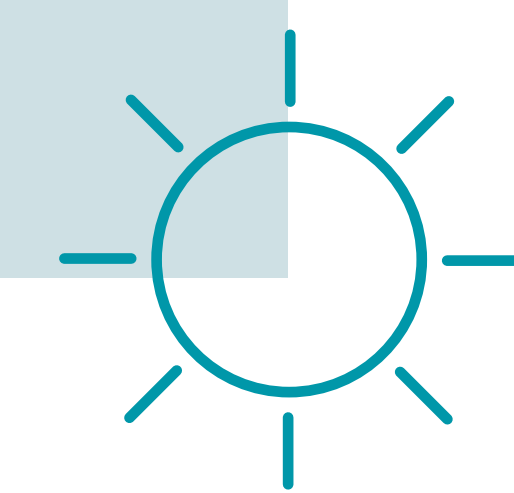
# SSE Renewables in the Highlands

SSE Renewables has a long history in the Highlands, starting 80 years ago bringing power to the glens via hydro-electricity.

As technologies advanced, we have harnessed the power of wind with our onshore and offshore wind farms, delivering clean, renewable energy to homes and businesses across the Highlands and beyond. We operate eight onshore wind farms across the Highlands generating 685MW of power, helping to generate clean energy for 680,000 homes.







SSE Renewable's Achany Extension wind farm is proposed on land adjacent to SSE Renewables' operational Achany Wind Farm, approximately 4.5km north of the village of Rosehall and 11km north-west of Lairg. The 18 turbine, 81MW Achany Extension project (formerly known as Glencassley) was consented by Scottish Ministers in May 2023 following extensive consultation with the local community and wider stakeholders.



After a detailed feasibility study, our project team is progressing a project redesign for Achany Extension to make the project economically viable, which will include a requirement for taller turbines with up to 200m tip heights. This will require a S36C application to vary the consent, which will include a comparative EIA Report.

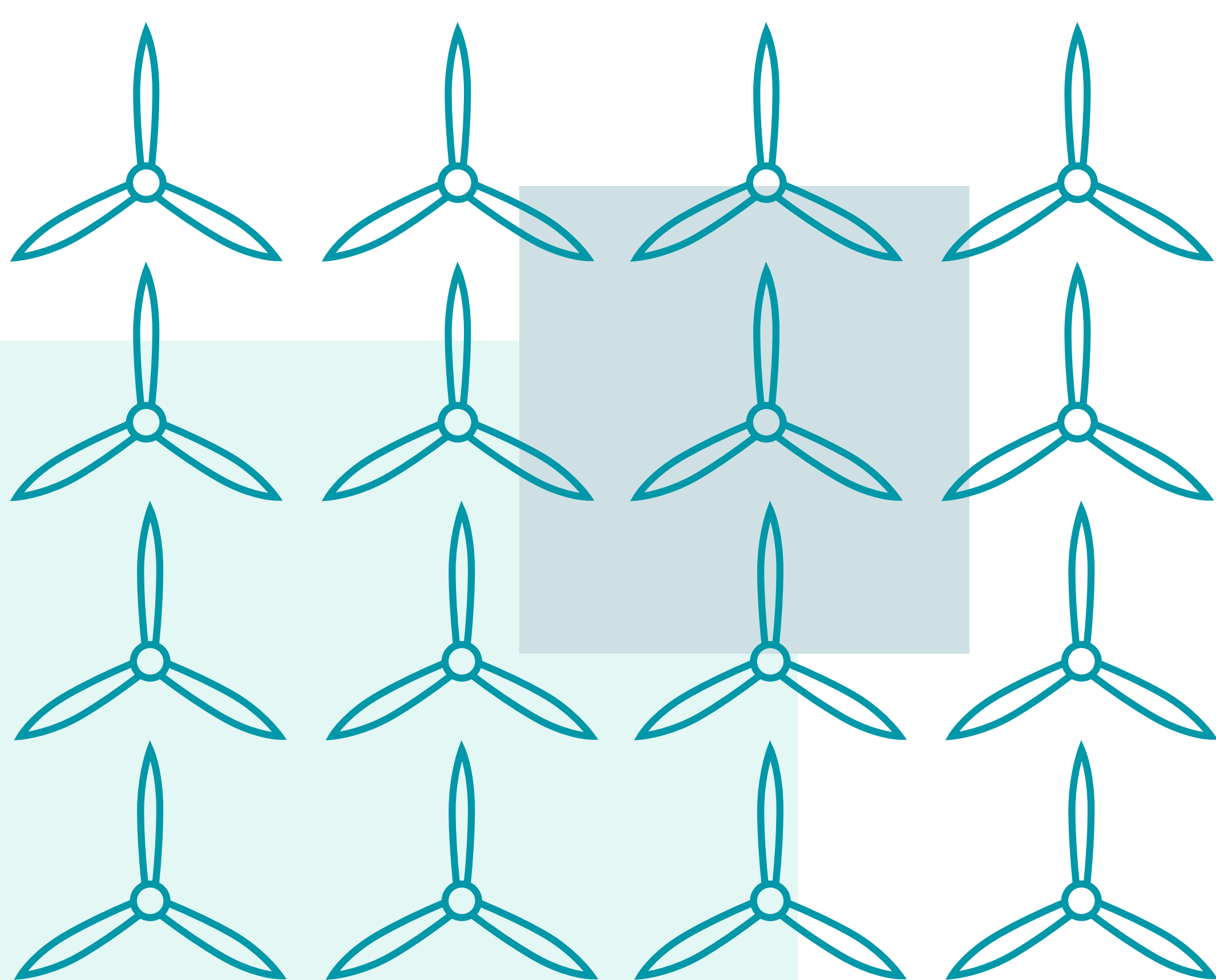
Today's consultation event will provide an opportunity to find out more about SSE Renewable's proposed re-design for Achany Extension and share feedback on our amended plans for the consented project.





# Proposed amendments to the Achany Extension consent

Scheme as consented	Proposed amendment to consent
<b>18 turbines with 18 hard stands</b>	<p>Remains 18 turbines with proposed increase to hardstanding size to meet technology and engineering requirements for the use of taller turbines (and some minimal hard stand repositioning to improve site efficiency).</p> <p>Minor changes to access track locations in line with proposed hardstands movements (resulting in a reduction in overall length of track required).</p>
<b>Up to 150m tip height</b>	Up to 200m tip height.
<b>No Turning Heads</b>	Addition of 8 turning heads proposed to accommodate turbine supplier delivery requirements.
<b>Infra-red Turbine Lighting</b>	Visible lighting solution which needs to be agreed with consultees that reflects the requirement for increased tip height triggering the need for visible aviation lighting.

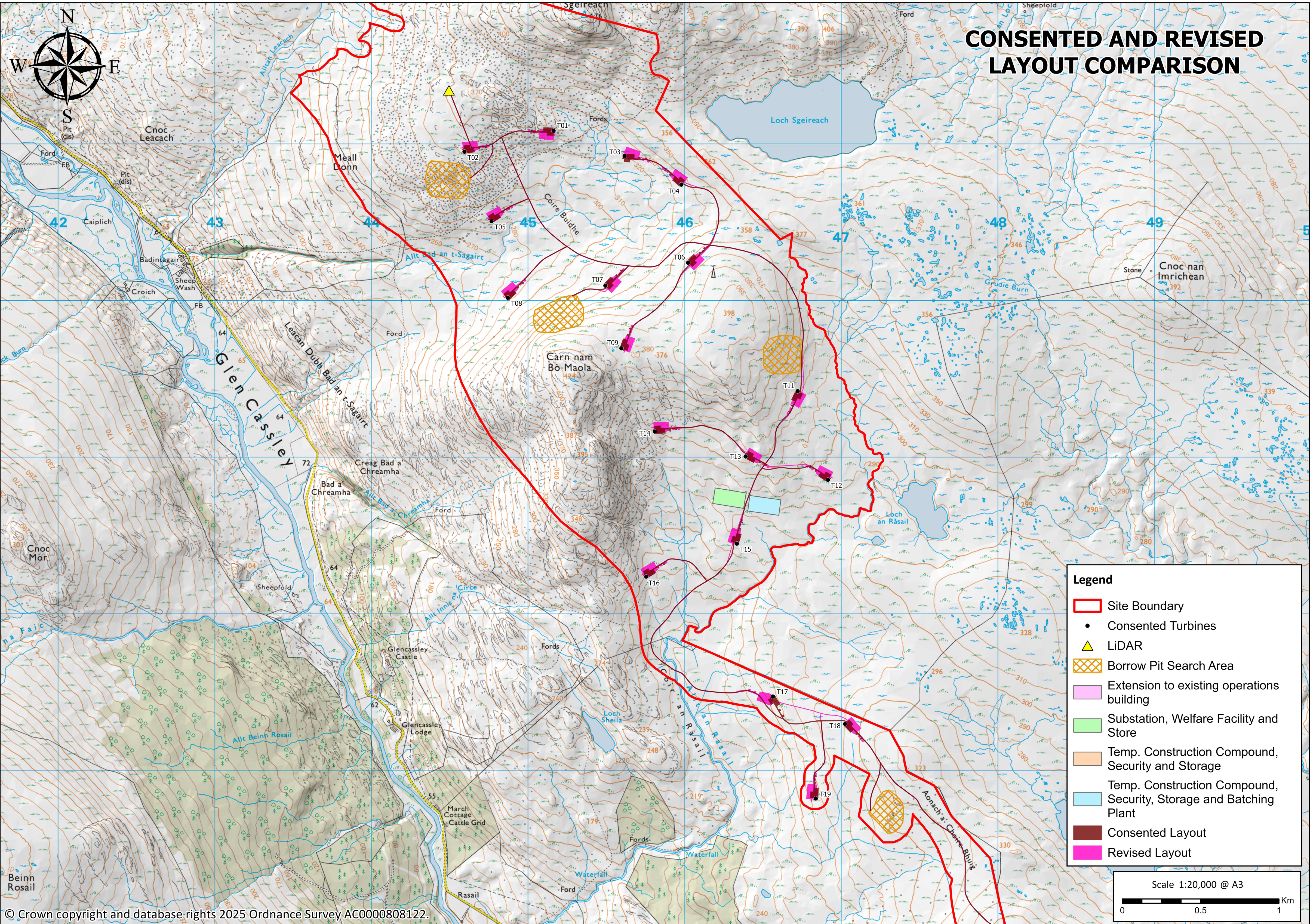
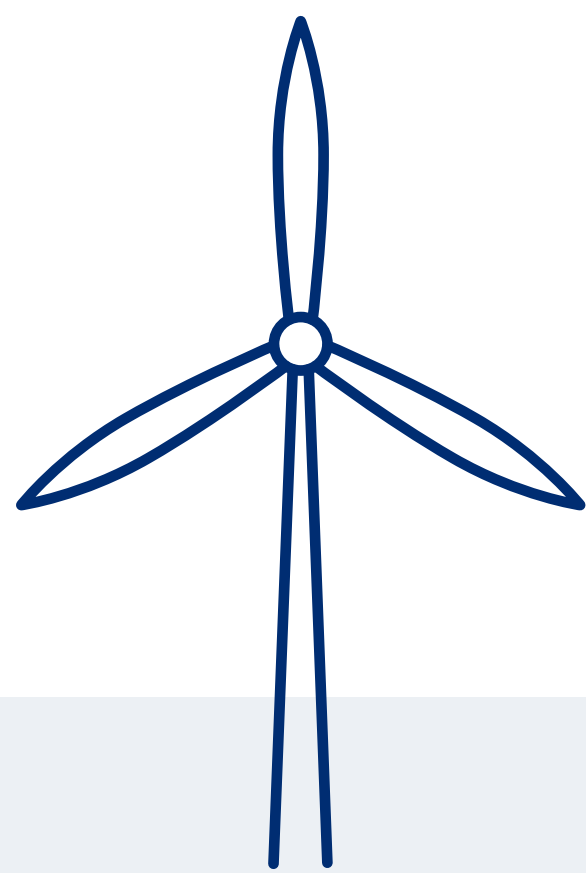






# Proposed amendments to the Achany Extension consent

The proposed update to the site layout can be viewed in the map below:





# What will stay the same

## Site boundary

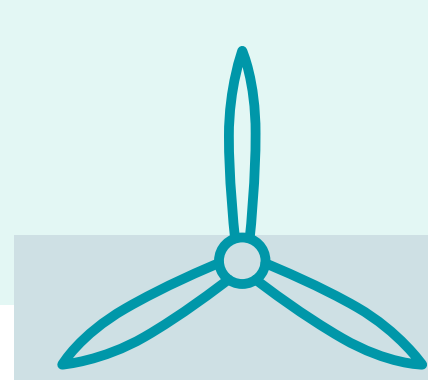
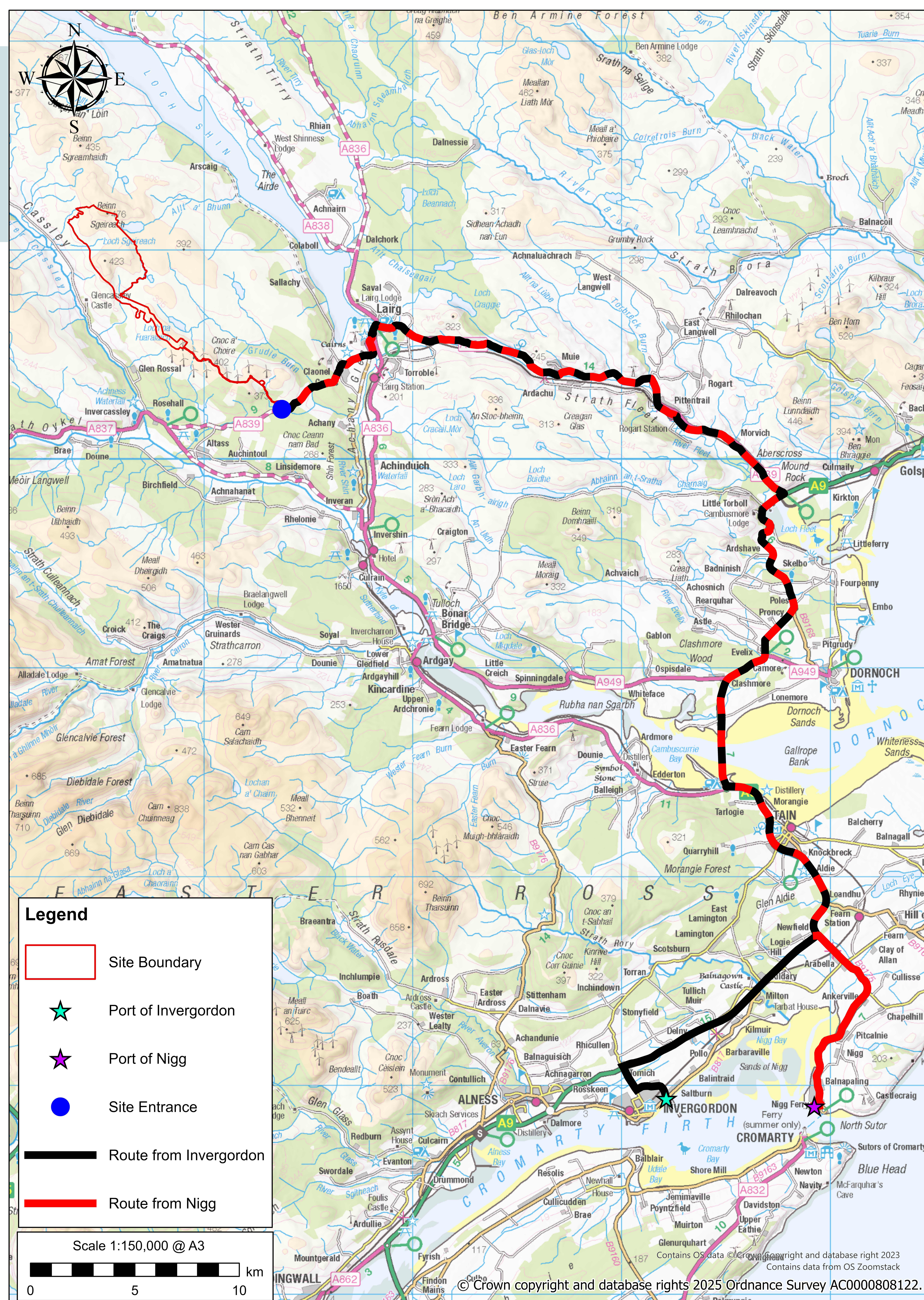
There are no changes proposed to the development site boundary of the Achany Extension site, which will remain the same as consented.

While some changes are proposed to hardstand positioning as a result of technical and engineering requirements for the proposed larger turbines, the site layout remains as close as possible to the consented layout. It is anticipated that the predicted levels of construction and decommissioning impacts will not change.

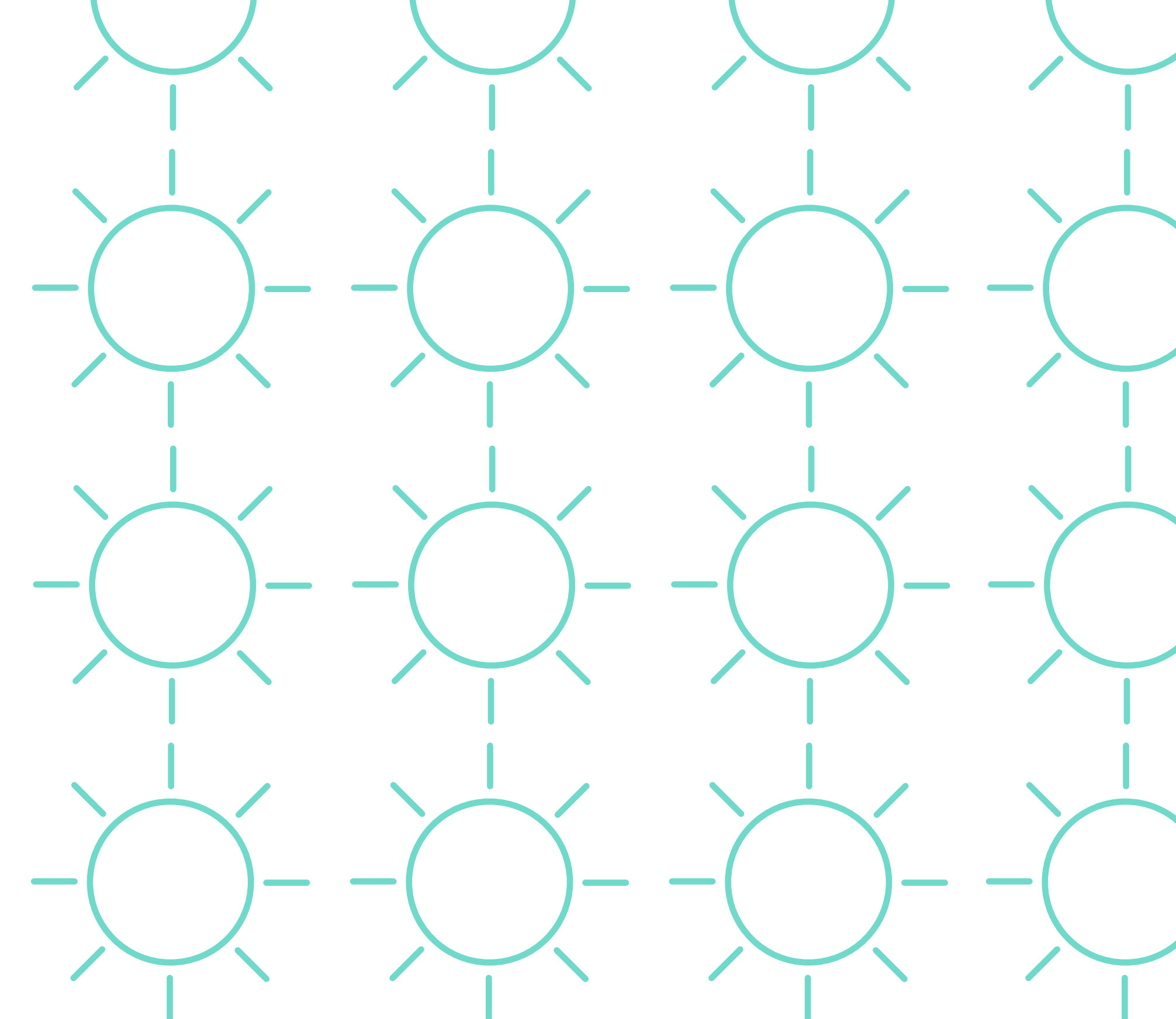
## Turbine Delivery Route

The proposed changes will have no impact on the original proposed turbine delivery route for the site.

The preferred port of entry for turbine blades is anticipated to be Nigg or Invergordon. The delivery route will follow the A9 to The Mound/A893 Junction and then follow A839, passing through Pittentrail and Lairg, before taking the A836 south and then the A839 to the Site Entrance.







# Project redesign timeline



**Achany Extension consented**  
May 2023



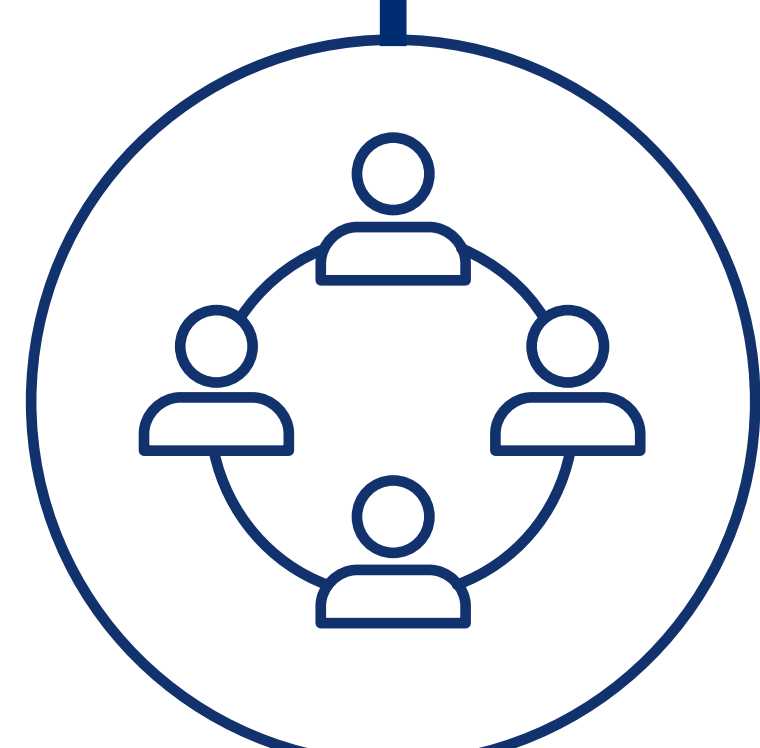
**Project redesign**  
January-May 2025



**Scoping report submitted**  
May 2025



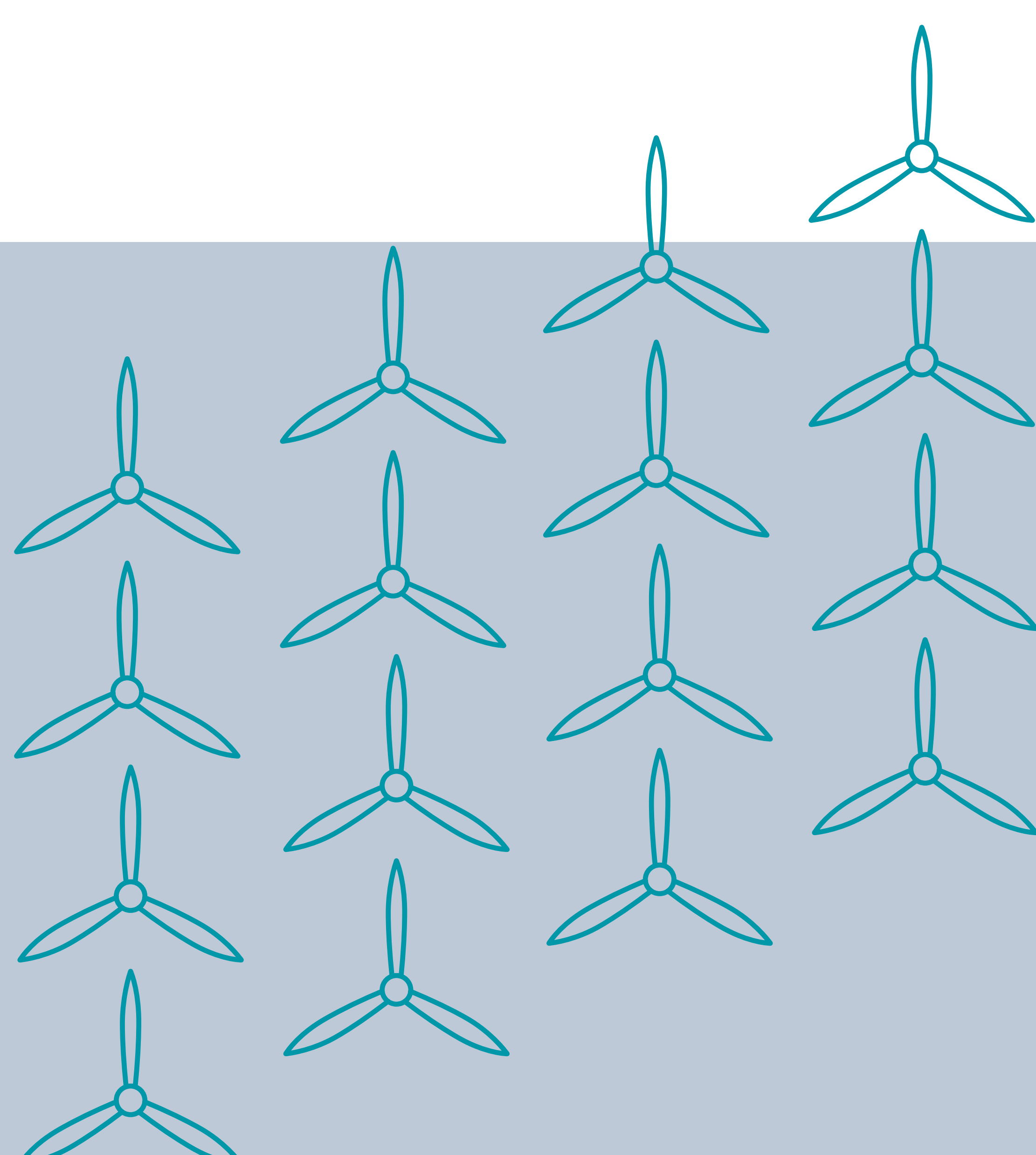
**First round of public consultation**  
June 2025



**Second round of public consultation**  
August 2025



**S36C amendment submitted to the Energy Consents Unit**  
Early Autumn 2025





# Environmental Impact Assessment (EIA)

## Scoped In

An Environmental Impact Assessment (EIA) was undertaken as part of the original application that was consented. The following areas will be impacted in such a way with the proposed design that they require an updated EIA, to verify no change to the previously reported EIA findings:

- Landscape and Visual
- Ecology
- Ornithology
- Cultural Heritage
- Aviation

## Scoped Out

The following areas have been deemed to receive no significant impact through the proposed design changes and therefore are not advised to require an updated EIA.

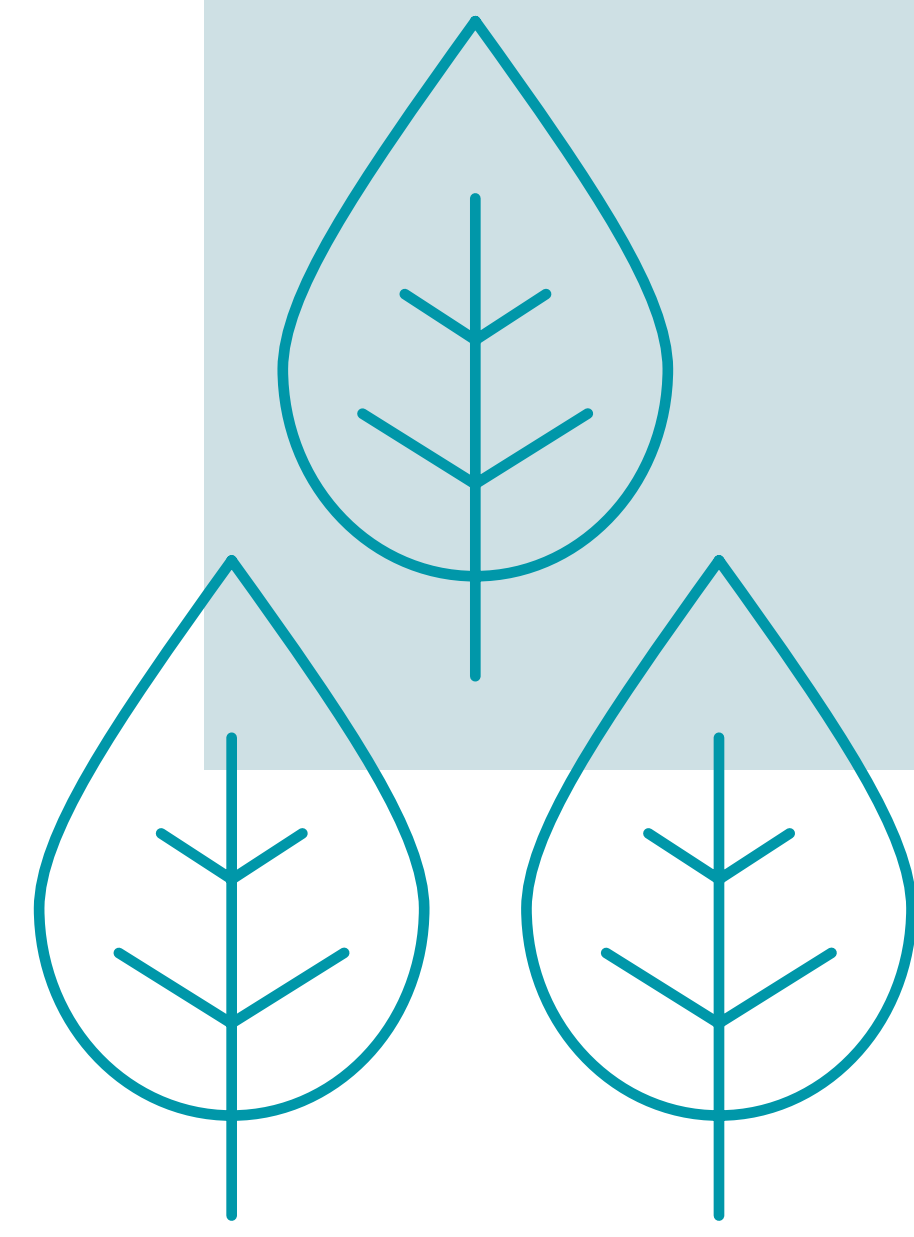
- Hydrology
- Socio-economics, Recreation & Tourism
- Noise & Vibration
- Traffic, Access & Transport
- Geology

Independent consultants will be retained to carry out technical assessments and advise on environmental issues associated with the proposed amendment. These experts will work with us during the design process; carry out the new environmental impact assessments, and prepare documentation for the comparative EIA Report.

Each subject requiring assessment under EIA Regulations will be presented as a separate chapter in the main body of the new EIA Report, or included as a technical appendix.







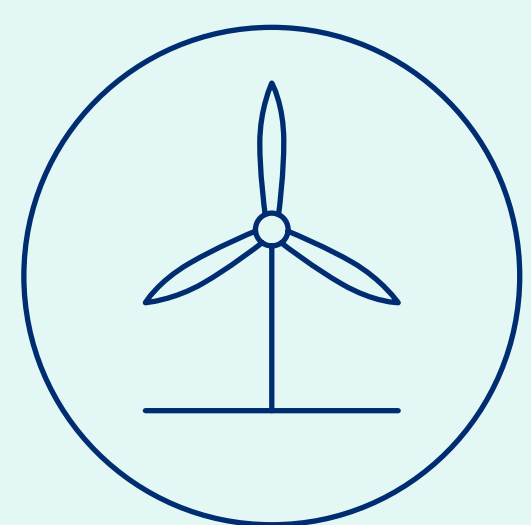
# SSE Renewables in the Highlands

## A Nature Positive approach

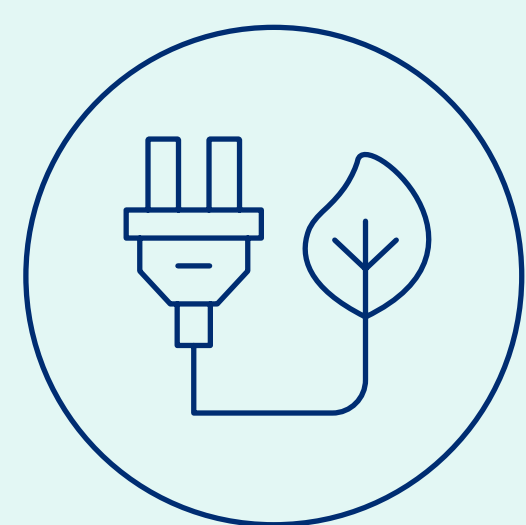
As we deliver the critical infrastructure that will be required to enable Scotland and the UK’s transition towards a decarbonised and energy secure future, we are also committed to being a responsible and sustainable developer when it comes to the natural environment.

At the core of our approach, we aim to protect and where possible enhance the natural environment to ensure that we continue to meet our legal and regulatory requirements throughout all phases of our projects’ lifecycle, from development through to asset management (operations) and decommissioning.

As part of these commitments, SSE Renewables have implemented a policy of no net biodiversity loss on all onshore sites consented from 2023 alongside a commitment to deliver biodiversity net gain on all new sites consented from 2025 onwards. By taking this approach we are ensuring that our projects provide a measurable benefit to nature conservation; demonstrated in the development of our ten-point plan for biodiversity below:



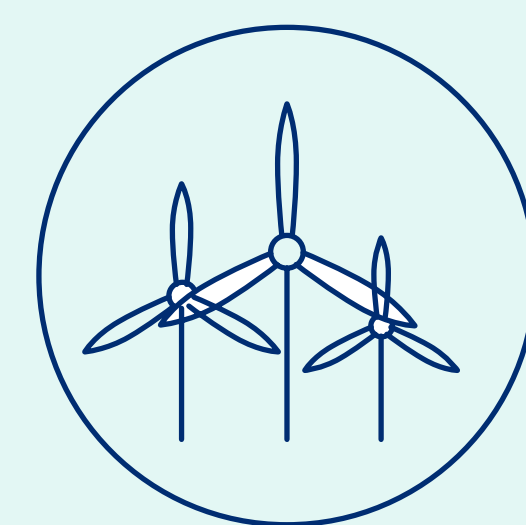
**1. Deliver Biodiversity No Net Loss on major onshore projects consented from 2023**



**2. Deliver Biodiversity Net Gain on major onshore projects consented from 2025\***



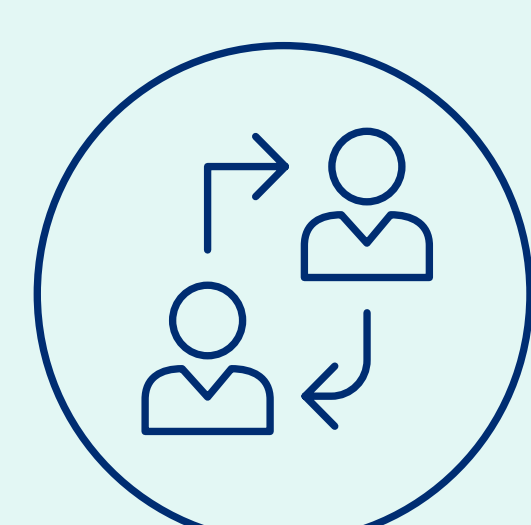
**3. Embed BNG ambitions in decision-making at each stage of all new project developments from 2023**



**4. Use our BNG Toolkit and collaborate with partners to identify biodiversity improvements on operational sites**



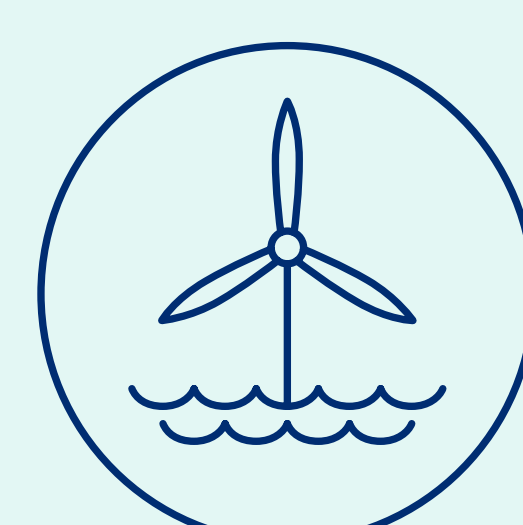
**5. Evolve our BNG Toolkit and approach to enable use in all geographies**



**6. Actively participate in industry forums to support the development of BNG across all renewable technologies**



**7. Contribute to research projects and the creation of knowledge around BNG in the renewables sector**



**8. Trial new approaches for BNG on offshore projects, including digital innovations**

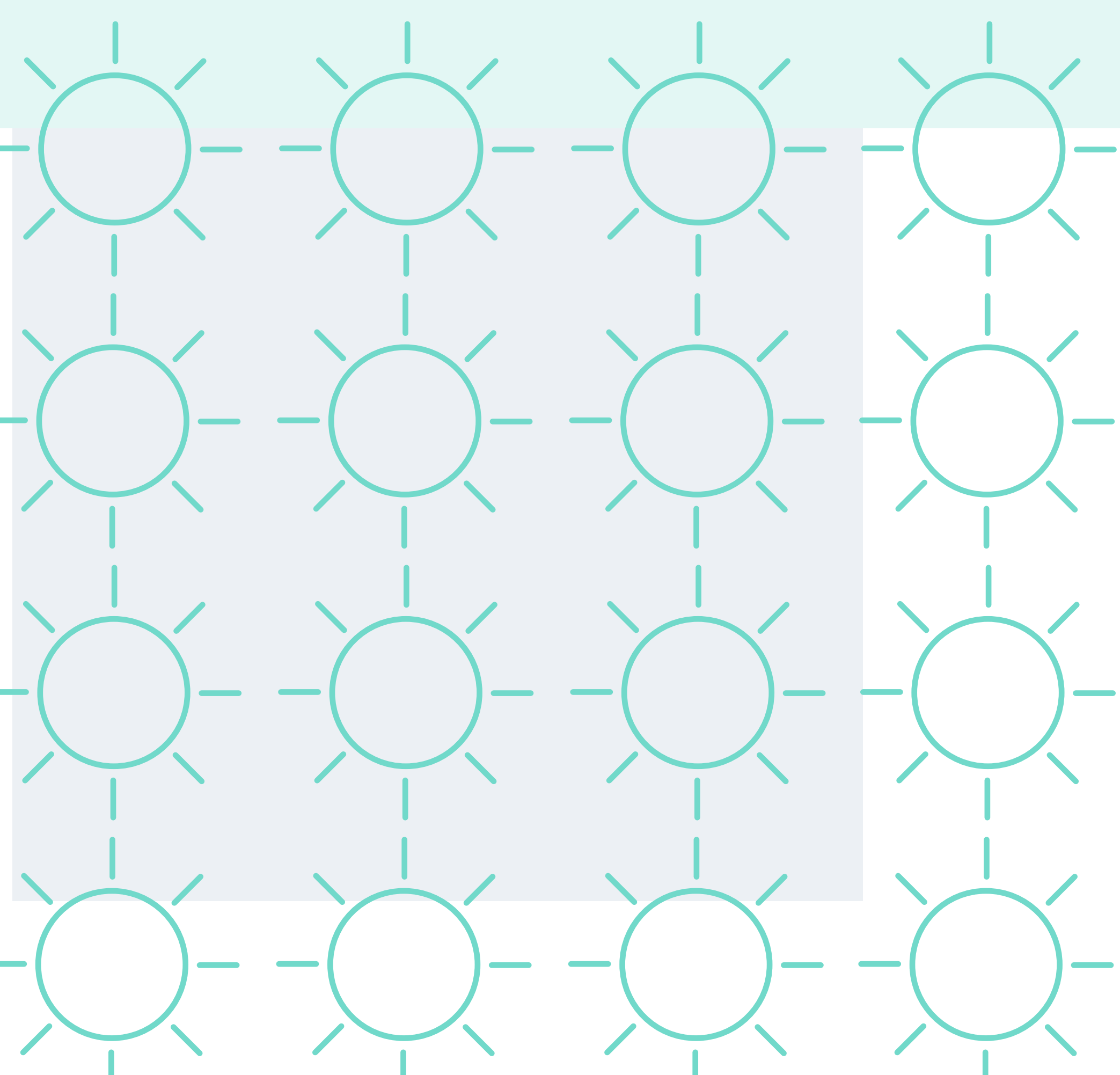


**9. Develop the concept of ‘Habitat Banks’ with a transparent methodology for applying BNG credits**



**10. Lead the BNG working group of the Powering Net Zero Pact, a collaboration of global power sector companies**

\*This includes repowering and decommissioning projects.







# Working with the Community

## Delivering benefit locally

SSE Renewables has a long-term commitment to invest in our local communities. Over the next 25 years the SSE Renewables' Community Benefit Funds will generate at least £315 million across all UK and Ireland projects with a £100 million of that being delivered across the Highlands.

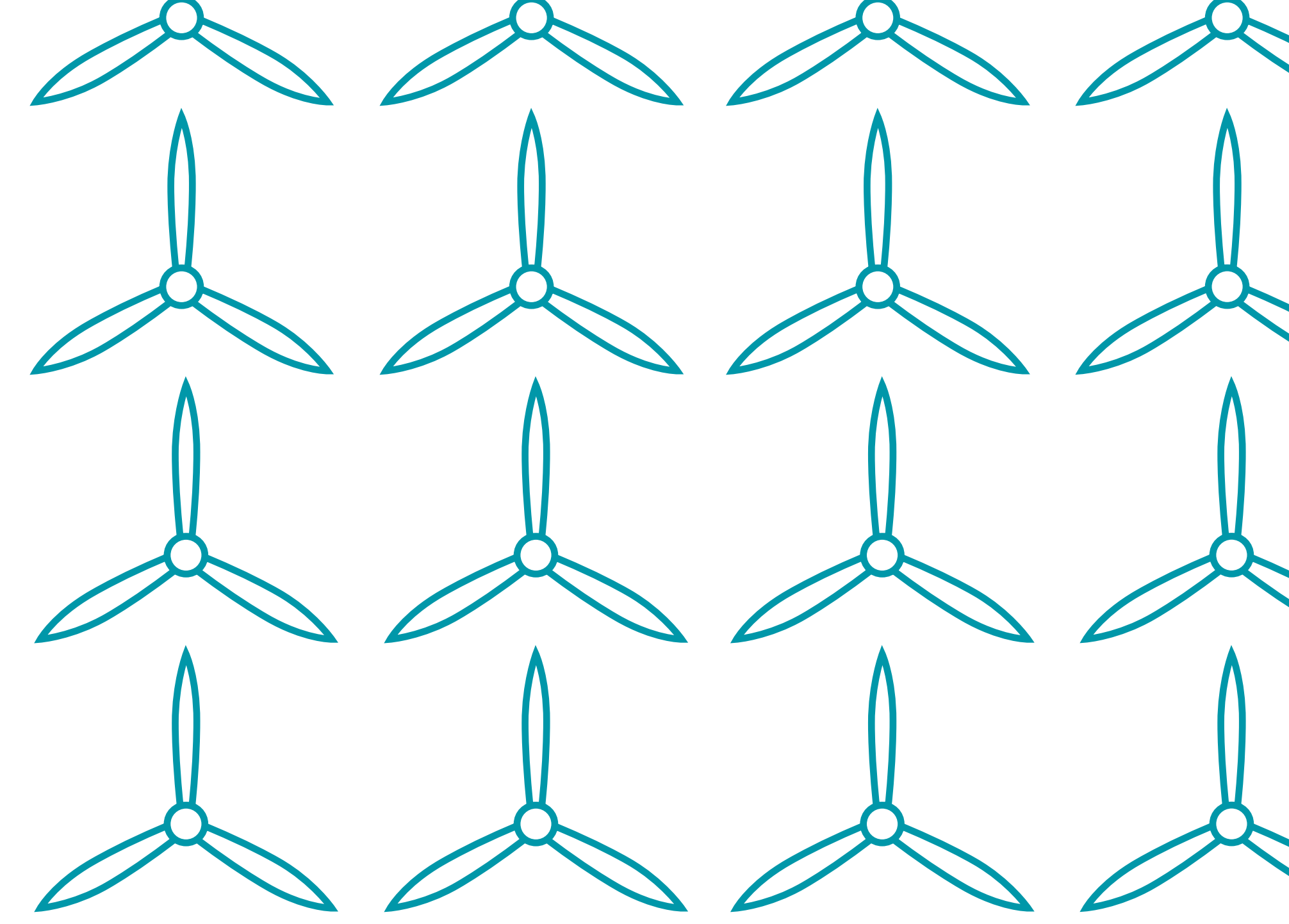
SSE Renewables is one of the world's largest developers of renewable energy. We have always believed in sharing the value of our renewable energy projects with communities, maximising the benefits of local, sustainable power.

We made a commitment in 2012 to invest in local communities. Our ambition is to make sure every single penny of that money is spent wisely; it makes a difference and reflects the priorities of local people. We think the best way to achieve this is for the grant decisions to be made by local people.

A community investment fund will be established for Achany Extension valued at £5,000 per MW, with £2.5k distributed to local communities and £2.5k to our regional Highland Sustainable Development Fund. The funds will be available once main construction starts and will be in addition to funding that is currently being delivered through the established Achany wind farm fund.







# Powering Impactful Community Projects

## What our funds are delivering locally

Through our Achany wind farm we provide around **£100,000** per year for community and charitable projects. Between 2010 and 2034, we expect to have invested around **£2.9 million** in local projects in Ardgay and District, Criech and Lairg. An additional **£19,000** per year is also made available to support the Kyle of Sutherland Apprenticeship Scheme.

### Core Funding for Local Organisations



#### Kyle of Sutherland Development Hub

A desire to reduce social isolation by providing engaging activities for local people has always been the inspiration and motivation for the Kyle of Sutherland Development Hub.

The Hub receives annual funding from SSE Renewables Achany and RWE Rosehall wind farms community benefit funds representing around 20% of total income. The money directly supports the salaries for two core staff members and underpins the Hub's ability to deliver existing activities and develop new ones.

*The unrestricted funding that the Hub receives from these funds has provided a level of financial stability that has enabled us to focus less on survival and more on growth – on continuing to meet the needs of our communities through additional projects and services*

**Hayley Bangs, Director and Chair of Kyle of Sutherland Development Trust.**

#### Lairg and District Community Initiative

LDCI is a small volunteer-led organisation that embarked on an ambitious community housing project after they became aware of an acute and growing shortage of supported accommodation for older people in the area. The homes were completed in March 2024 making them the first social housing to be delivered in Lairg since the 1990s.

This was a complex multi-agency project that took several years to deliver. The support provided by partners, particularly Kyle of Sutherland development Trust, was critical and the core funding provided by the Achany wind farm community benefits enabled this support to be provided.



### Sustainable Development Fund

The Sustainable Development Fund is in addition to our local community funds and supports strategic projects in the regions where SSE is operating. It allows the benefits of our renewable energy developments to be accessible to a wider area and is directed to projects that can achieve significant impact in local communities.

In the Highlands, we expect the fund could be worth over **£25 million** over the next 25 years. SDF celebrated 10 years of delivery in November 2023. Since its launch, **£10.7 million** has been invested in 152 Highland based community projects.

#### Highland Energy Efficiency Programme

The project, which was funded by the Highland Sustainable Development Fund and in partnership with the Highland Council, provides energy efficiency measures for households in extreme fuel poverty across the region and has now received **£1.8 million** through the Highland Sustainable Development fund.

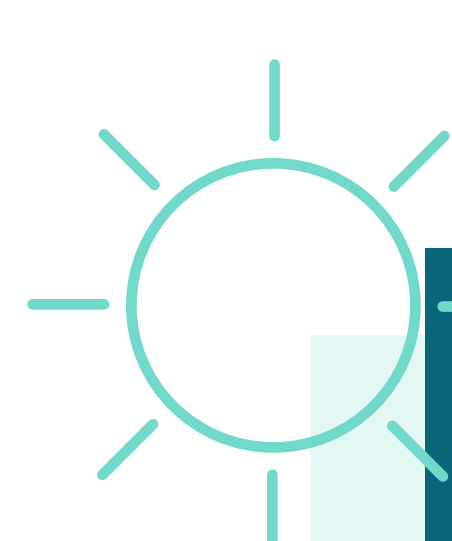






# Seeking your feedback

This exhibition is part of an ongoing conversation between SSE Renewables and stakeholders like you, who have an interest in the proposal.



## Seeking your feedback

We would very much welcome any feedback you may be willing to provide and so we have provided feedback forms which are available in the hall. Alternatively, please submit one online by using this QR code



## Next Steps for Achany Extension

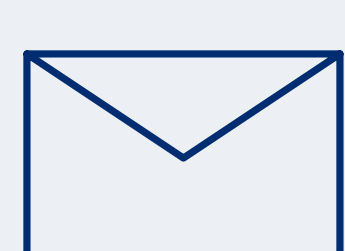
Thank you for attending the event today, and for sharing your views which will be considered by our project team.

A further consultation event will take place later this summer to provide another opportunity for feedback ahead of the submission of a final amended design to the Scottish Government's Energy Consents Unit later this year. **Dates for the second consultation round will be confirmed and publicised in due course.**

Further information on our plans, including today's exhibition boards, will also be available at:

[sserenewables.com/onshore-wind/in-development/achany-extension/](https://sserenewables.com/onshore-wind/in-development/achany-extension/)

## Keeping in touch



If you'd like to get in touch with our team to discuss Achany Extension please contact [Kirstanne.Land@sse.com](mailto:Kirstanne.Land@sse.com)

