

Legend

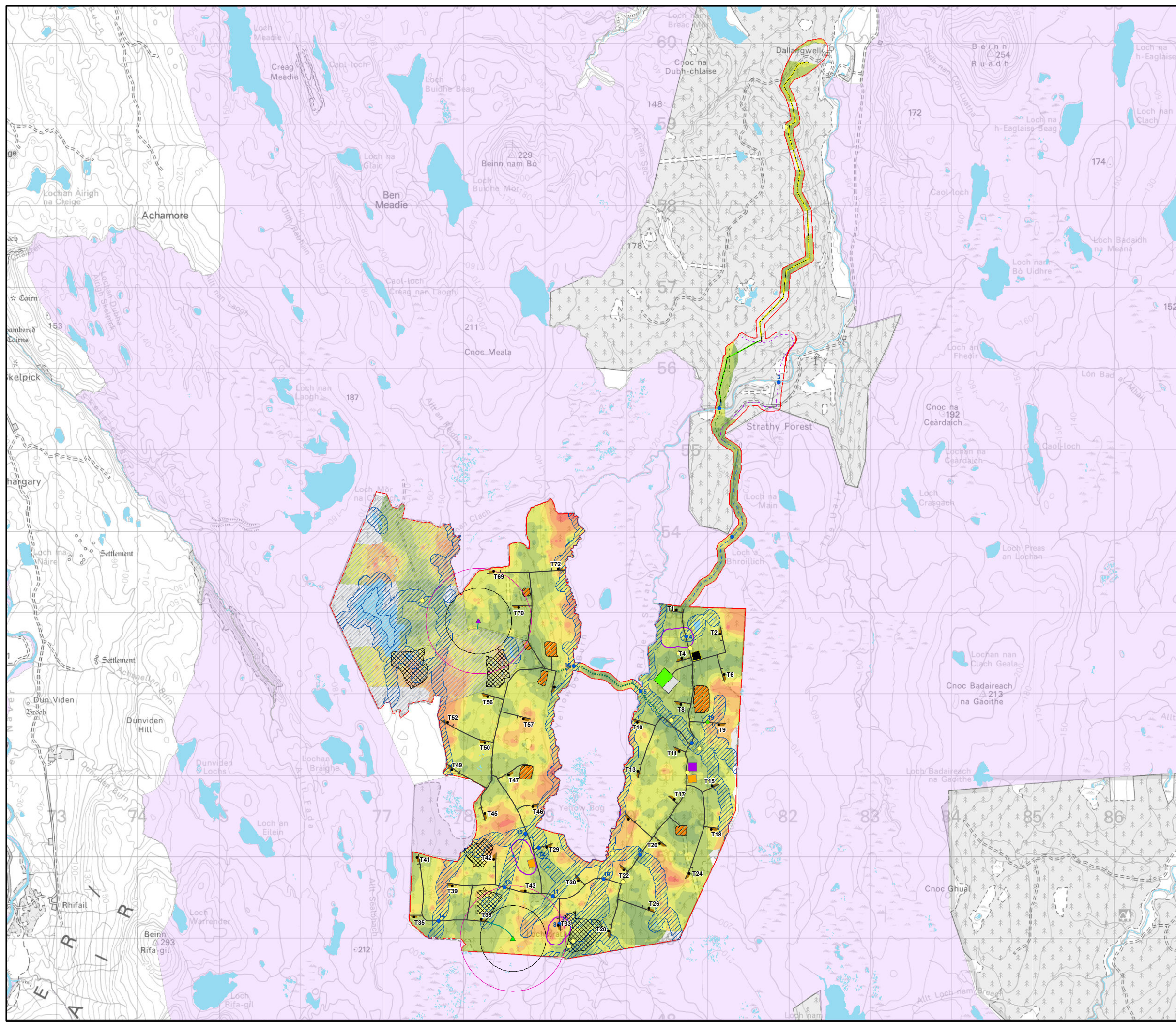
- Site Boundary
- Turbine
- Water Crossing Points**
- Water Crossing
- Water Crossing - New
- ▲ Water Abstraction Location
- LiDAR Options**
- ▲ LiDAR A
- ▲ LiDAR B
- LiDAR Track
- Access Track**
- Cut
- Floating
- Upgrade
- Potential Access**
- Preferred Access Route
- Alternative Access Route
- Common Access Route
- Indicative Cable Route**
- Details**
- Preferred Indicative Cable Route through Strathy North
- Alternative Indicative Cable Route through Strathy North
- Common Indicative Cable Route through Strathy North
- Existing Yellow Bog Track,
- Surfacing to be Upgraded and Minor Localised Widening
- Substation Temporary Laydown Area
- Construction Compound
- Site Boundary
- Substation
- Hardstand
- Batching Plant
- Amended Laydown Area
- Borrow Pit

Scale 1:30,000 @ A3



Figure 2.1
Proposed Varied Development

Strathy South Wind Farm
EIAR 2020



Legend

- Site Boundary
- Turbine
- Non-designated heritage assets
- Water Crossing Points**
 - Water Crossing
 - Water Crossing - New
 - ▲ Water Abstraction Location
- LiDAR Options**
 - ▲ LiDAR A (278609, 948990)
 - ▲ LiDAR B (278186, 952895)
 - LiDAR Track
 - Access Track
 - - - Yellow Bog
- Potential Access**
 - - - Preferred Access Route
 - - - Alternative Access Route
 - - - Common Access Route
- Indicative Cable Route**
 - Preferred Indicative Cable Route through Strathy North
 - Alternative Indicative Cable Route through Strathy North
 - Common Indicative Cable Route through Strathy North
- Other Features**
 - 405m
 - 648m
 - 70m Water Buffer based on 50k
 - GWDTE with 100m Buffer
 - UnForested Areas
 - Avoid area SNH
 - Surface Water
 - Substation Temporary Laydown
 - Construction Compound
 - Substation
 - Hardstand
 - Batching Plant
 - Amended Laydown Area
 - Borrow Pit
 - SAC/SPA
- Peat Depth**
 - 0
 - 0 - 0.5
 - 0.5 - 1
 - 1 - 1.5
 - 1.5 - 2
 - 2 - 2.5
 - 2.5 - 3.5
 - > 3.5

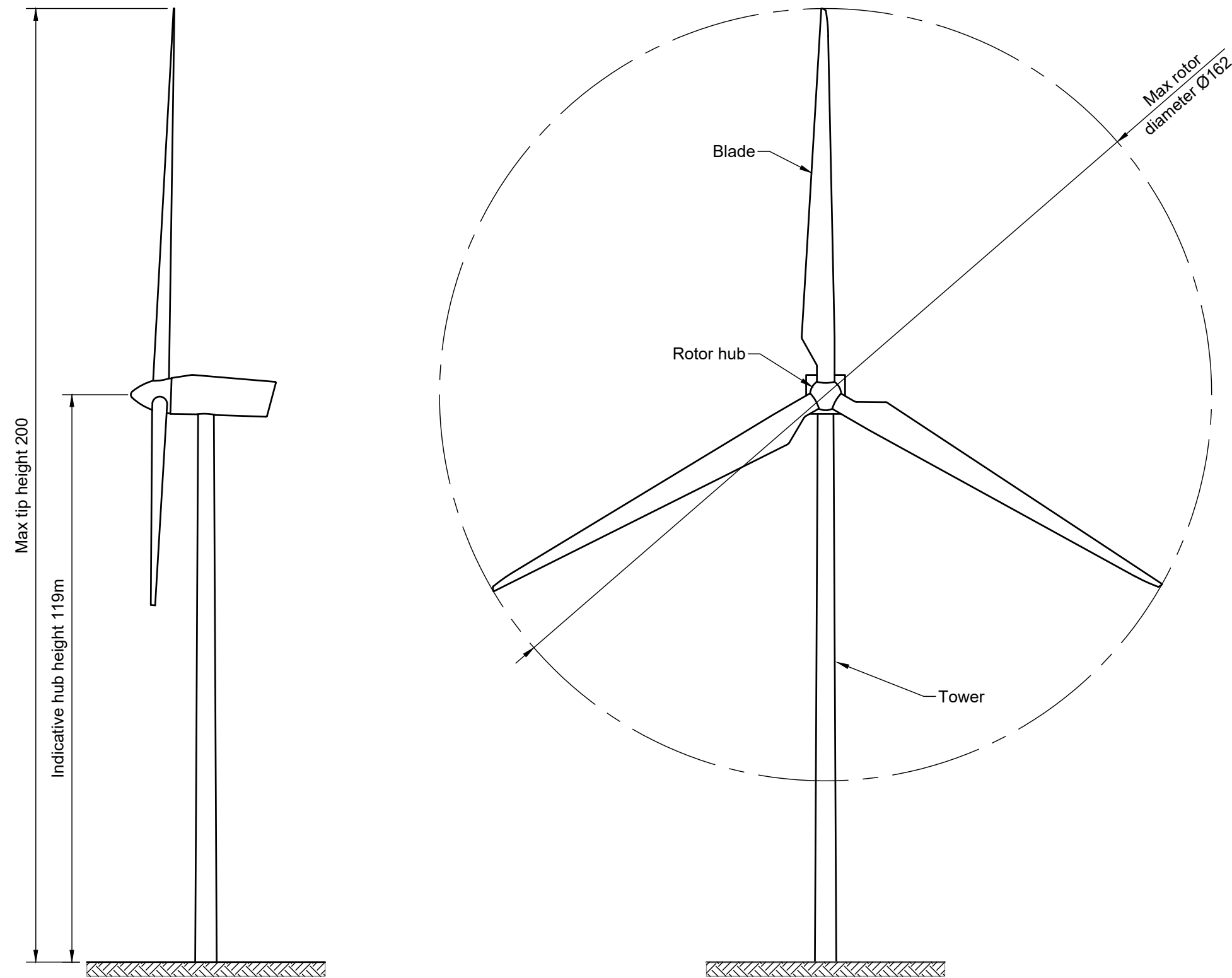
Scale 1:45,000 @ A3

0 0.5 1 Km

N

Figure 2.2
Layout Constraints

Strathy South Wind Farm
EIAR 2020



Notes

1. All dimensions are in metres

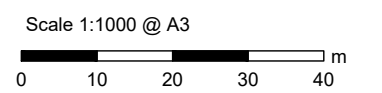
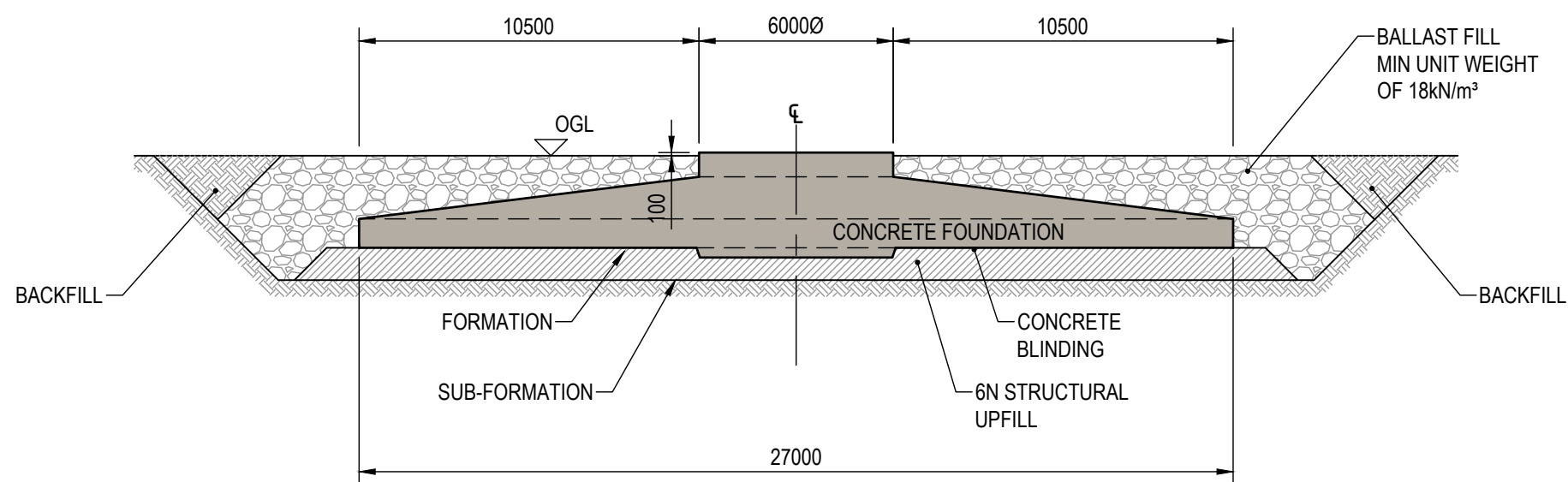


Figure 2.3
Typical Turbine Elevation

Notes

1. All dimensions are in millimetres.
2. A piled base option may be used depending upon ground conditions.
3. Dimensions shown are indicative and may be subject to change at detailed design stage.



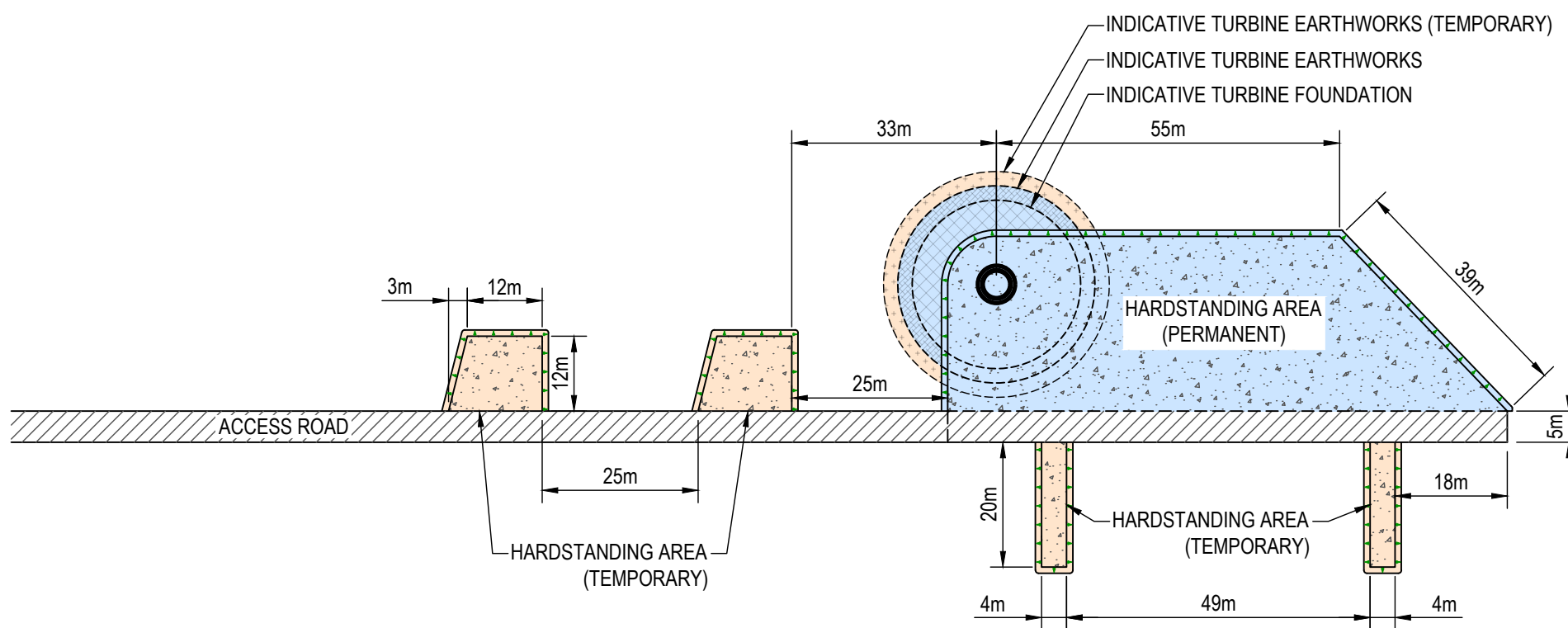
SECTION THROUGH TURBINE FOUNDATION

Scale 1:200 @ A3
0 2 4 6 m

Figure 2.4
Typical Turbine Foundation

APPROXIMATE HARDSTANDING (+INDICATIVE EARTHWORKS ENBANKMENT) AREAS:

- TEMPORARY $\approx 800\text{m}^2$
- PERMANENT $\approx 2520\text{m}^2$



Notes

1. All dimensions are in metres (m) unless stated otherwise.
2. Layout is indicative only and will be subject to change depending upon selected wind turbine generator supplier.

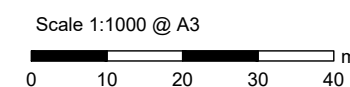
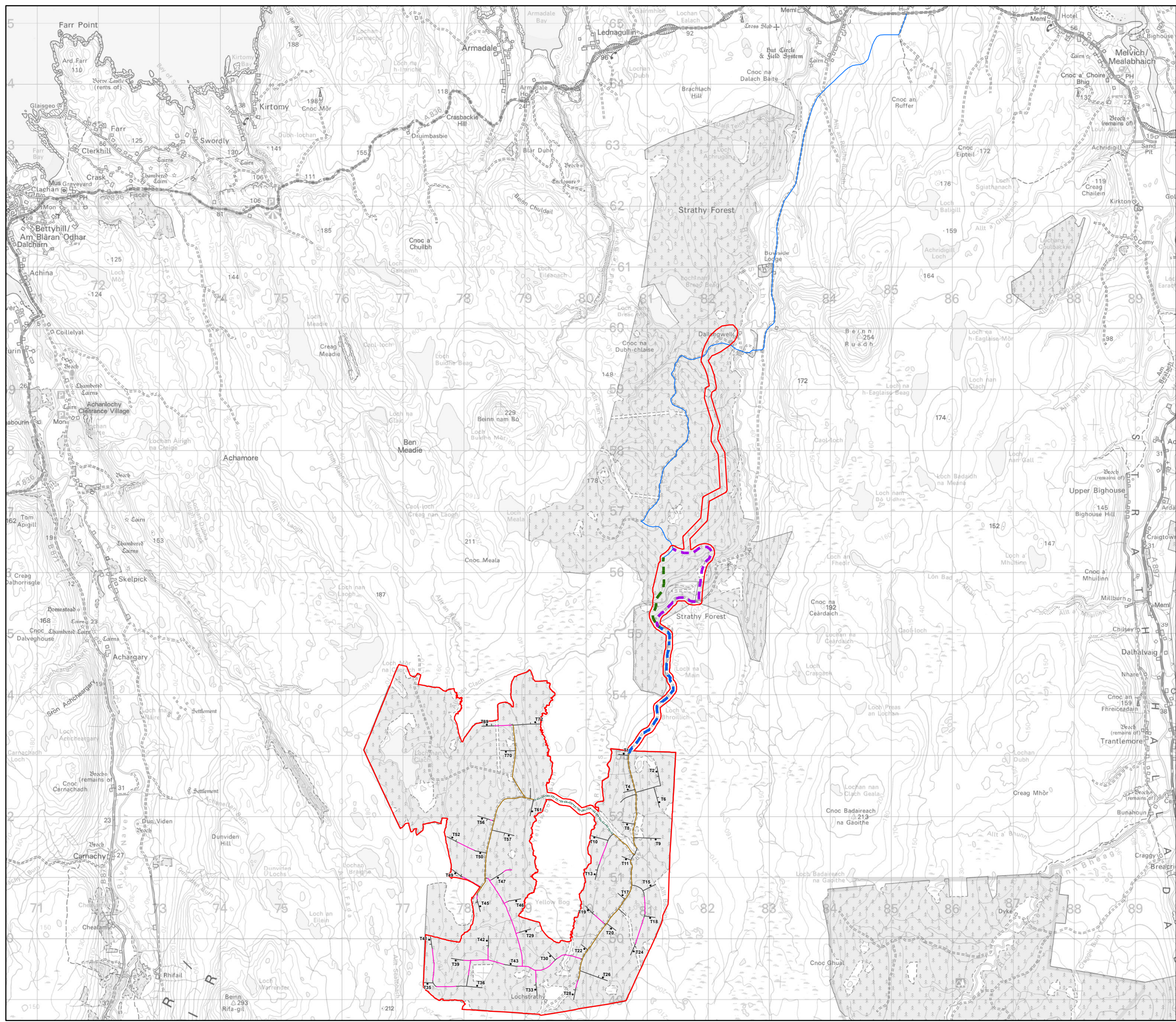


Figure 2.5
Proposed Hardstanding Area And
Crane Platform



Key

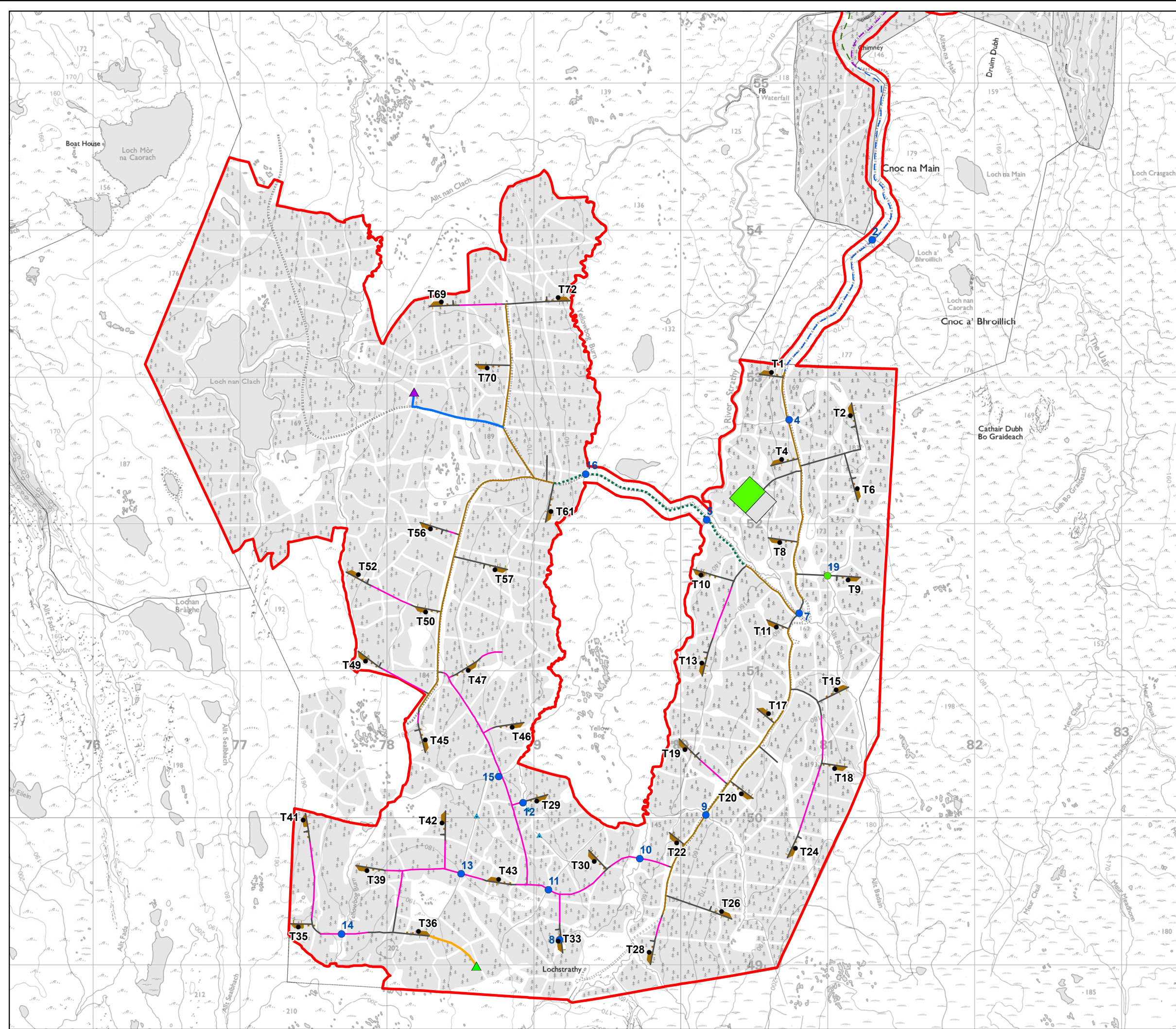
- Site Boundary
- Turbine
- Access Track**
- Cut
- Floating
- Upgrade
- Existing Yellow Bog Track, Surfacing to be Upgraded and Minor Localised Widening
- Strathy Northern Access Route
- Potential Access**
- Preferred Access Route
- Alternative Access Route
- Common Access Route

Scale 1:60,000 @ A3

N

Figure 2.6
Access Route

Strathy South Wind Farm
EIAR 2020



Legend

- Site Boundary
- Turbine
- Water Crossing Points**
- Water Crossing
- Water Crossing - New
- Water Abstraction
- LiDAR Options**
- LiDAR A
- LiDAR B
- Track to LiDAR**
- Cut
- Upgrade
- Access Track**
- Cut
- Floating
- Upgrade
- Potential Access**
- Preferred Access
- Alternative Access
- Common Access
- Existing Yellow Bog Track, Surfacing to be Upgraded and Minor Localised Widening
- Substation Temporary Laydown Area
- Substation
- Hardstand

Scale 1:25,000 @ A3

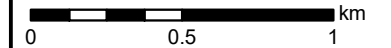
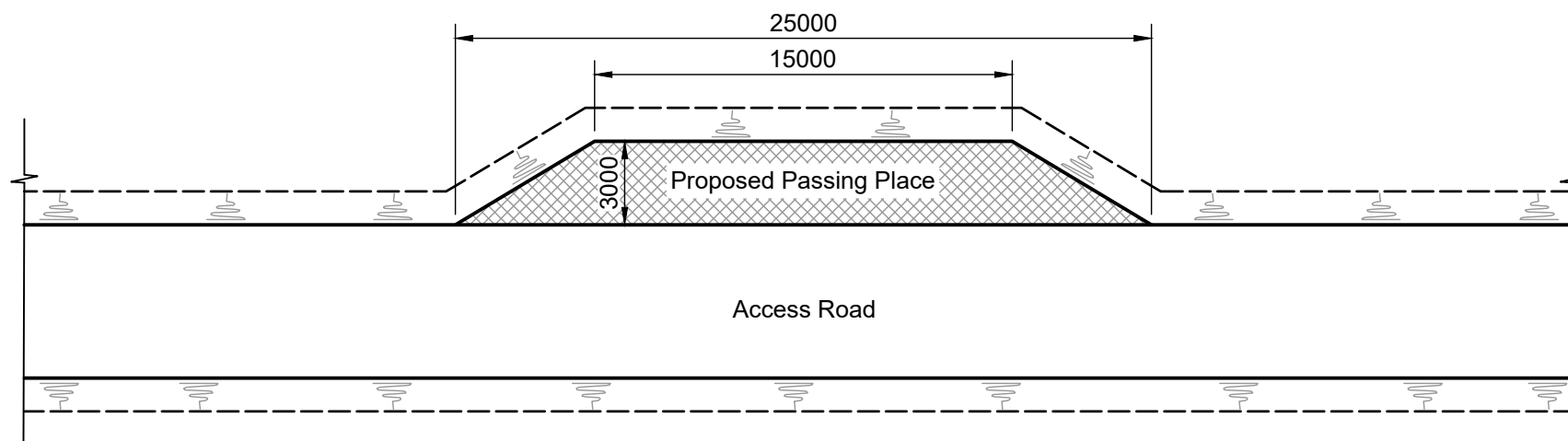
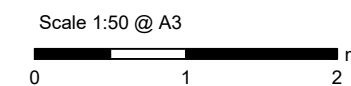
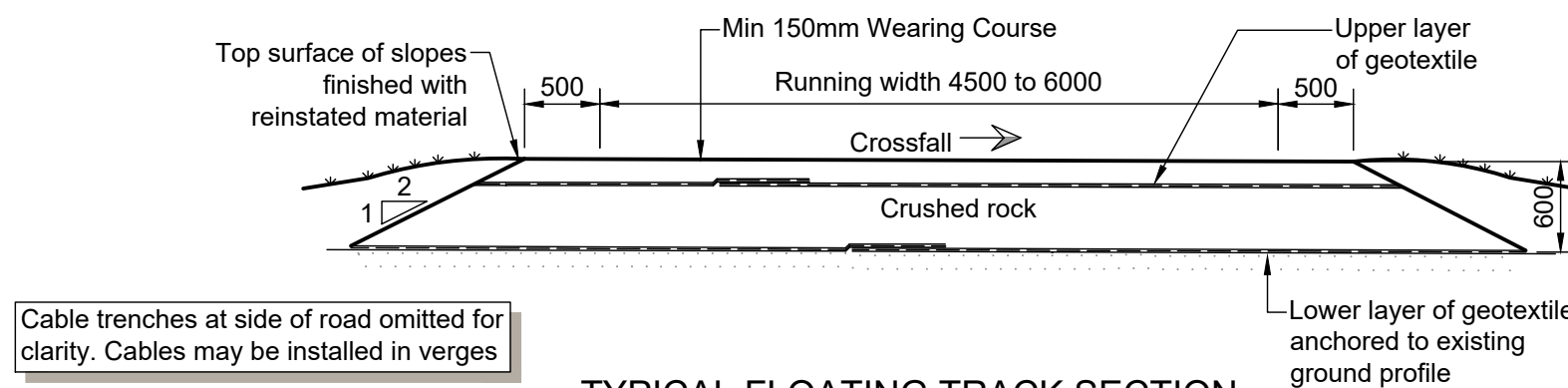
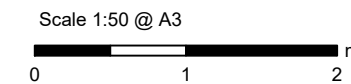
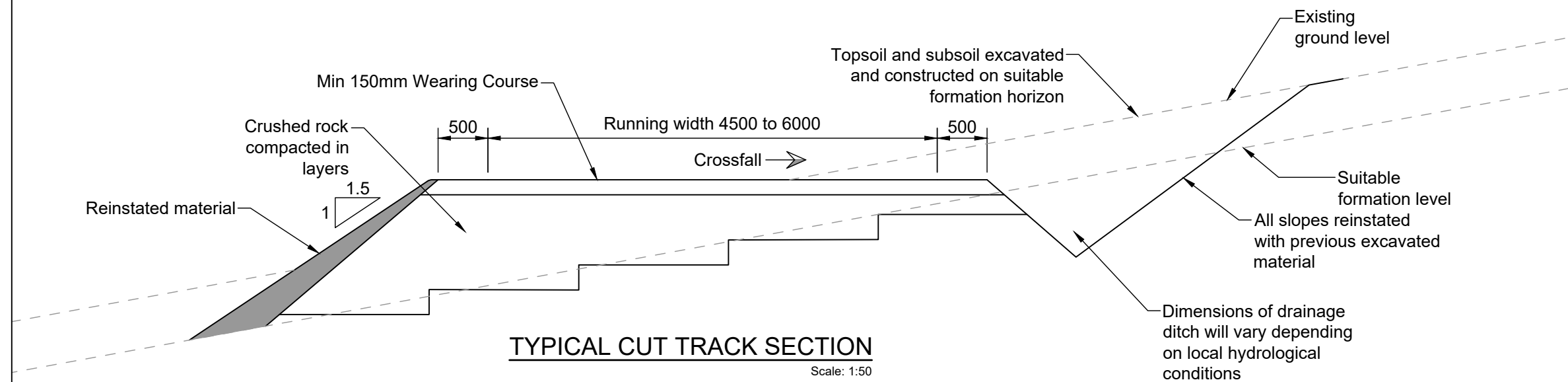


Figure 2.7
On-Site Access Track
(cut and floating and upgrades)

Strathy South Wind Farm
EIAR 2020



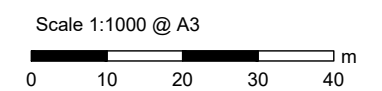
Notes

1. All dimensions are in millimetres (mm) unless stated otherwise.

Figure 2.8
Typical Access Track Cross Section

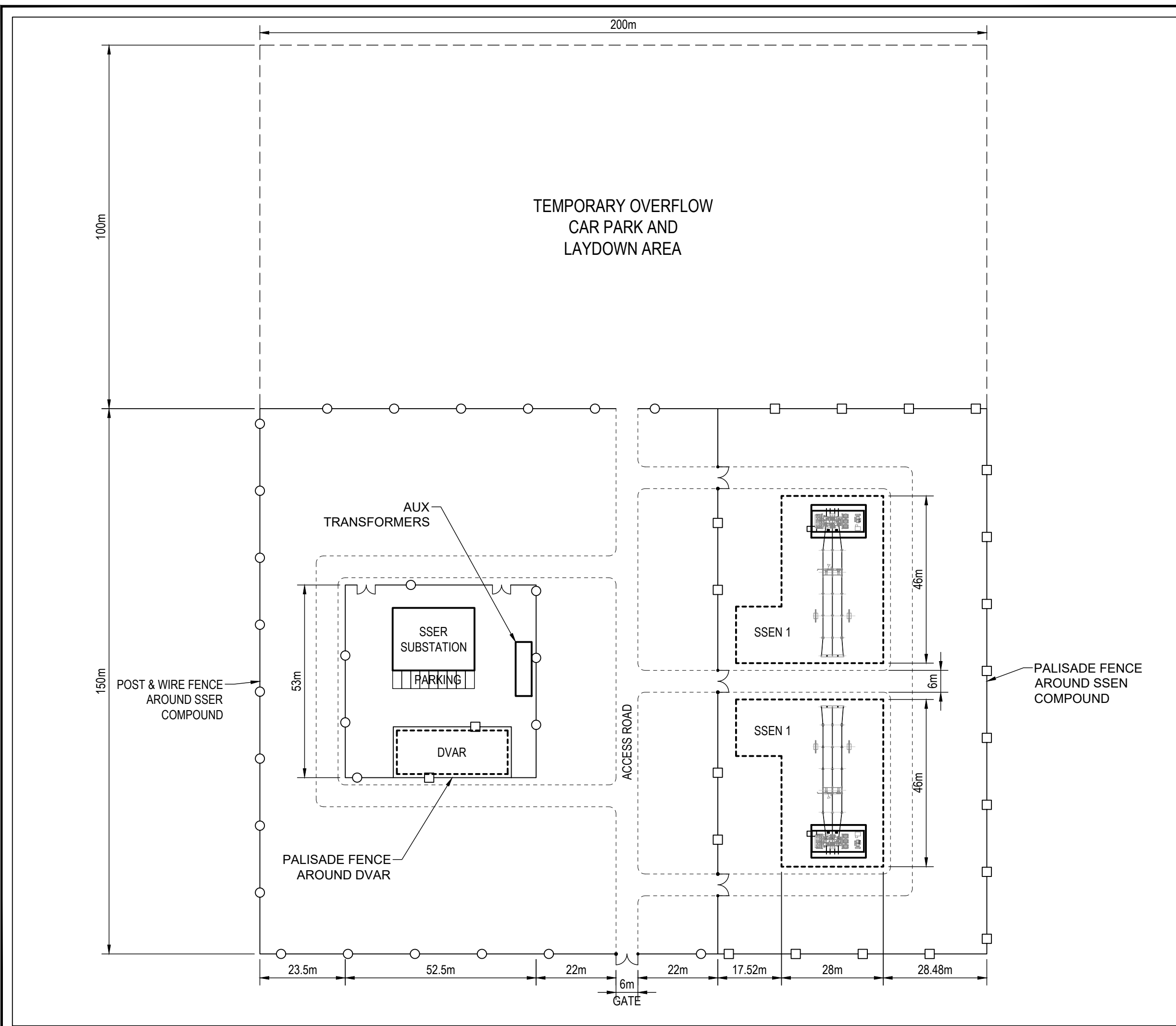
Notes

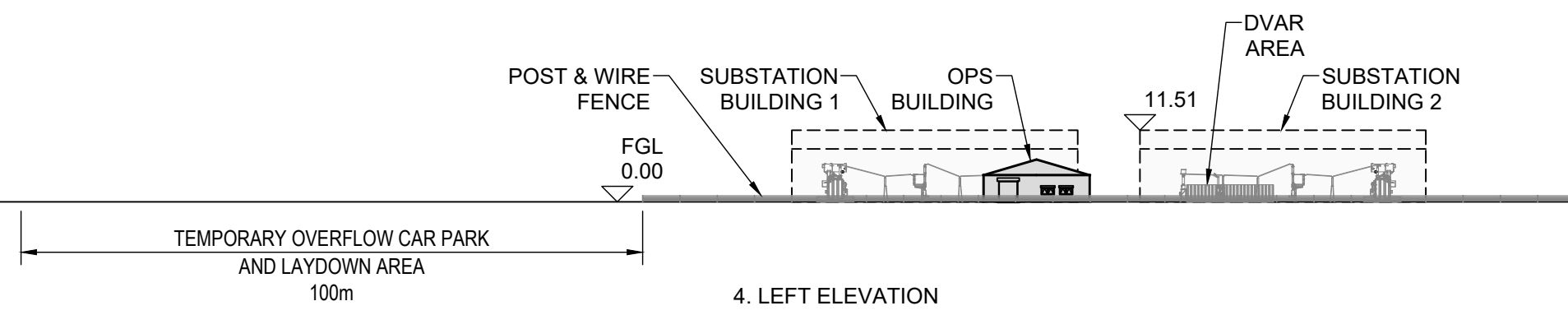
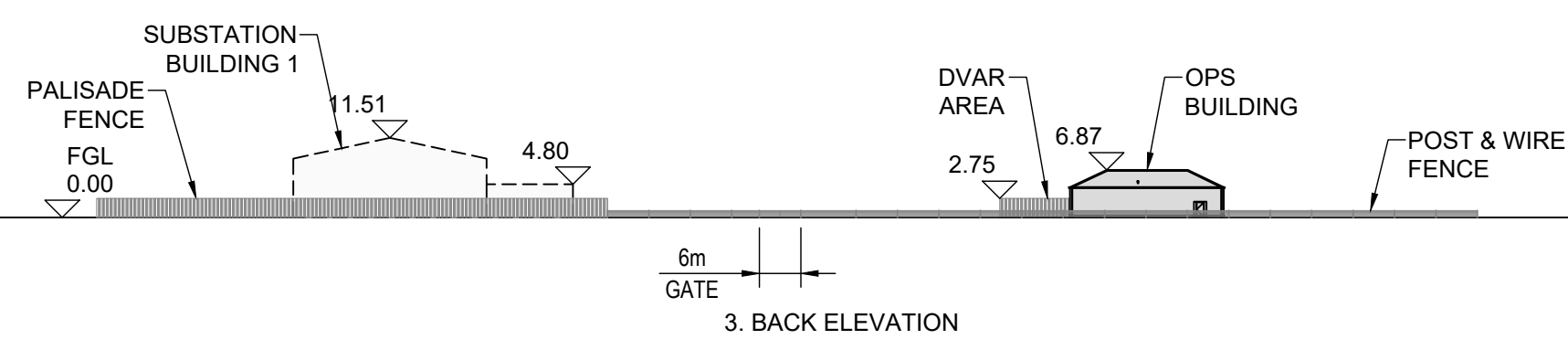
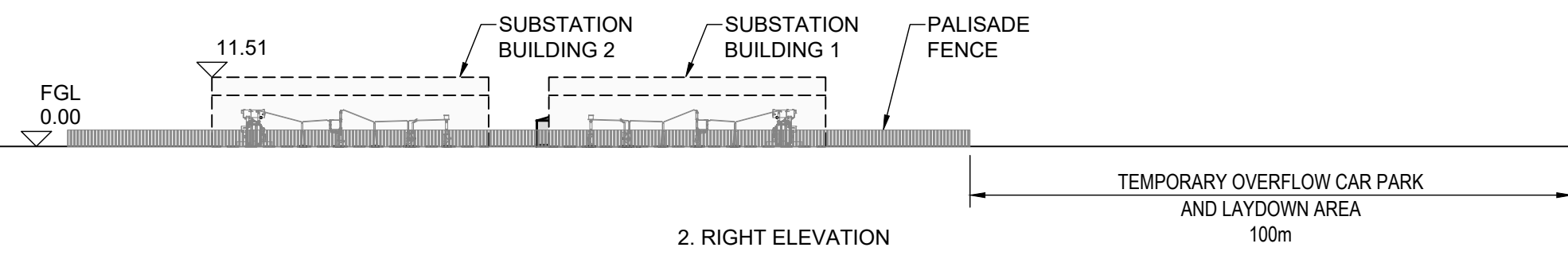
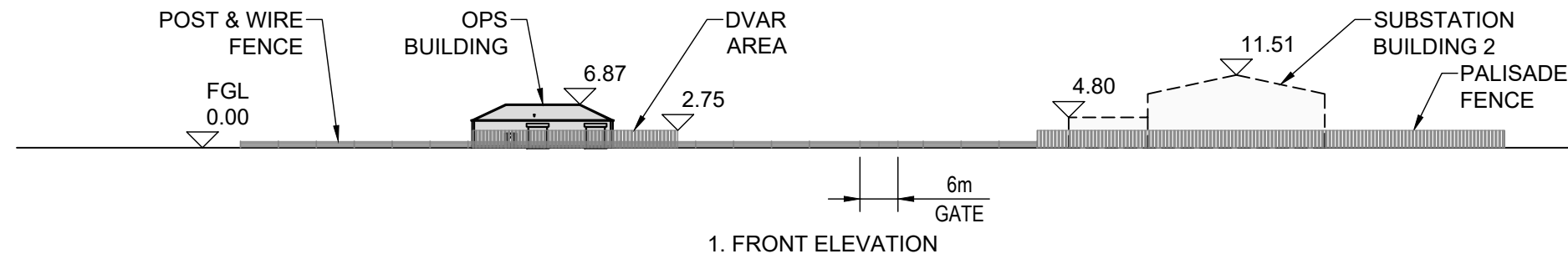
1. All dimensions are in metres (m) unless stated otherwise.
2. Layout and dimensions are indicative and are subject to change after detailed design.
3. Given site location, it is possible that "outdoor" equipment will require to be installed within buildings. These buildings are shown as a dashed line.
4. Additional transmission busbar works may be required to link the two transformers. This is dependent on the specific connection voltage and design provided by SHETL.



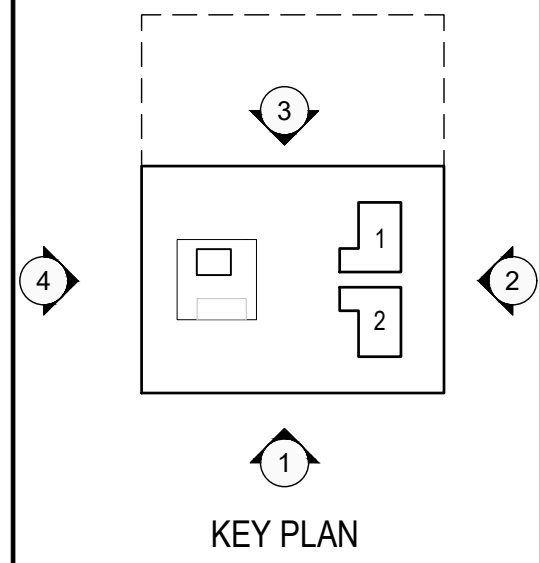
**Figure 2.9
Substation Layout - Plan**

**Strathy South Wind Farm
EIAR 2020**





- Notes**
1. All dimensions are in metres (m) unless stated otherwise.
 2. Layout and dimensions are indicative and are subject to change after detailed design.
 3. Given site location, it is possible that "outdoor" equipment will require to be installed within buildings. These buildings are shown as a dashed line.
 4. Additional transmission busbar works may be required to link the two transformers. This is dependent on the specific connection voltage and design provided by SHETL.



Scale 1:1000 @ A3

Figure 2.10
Indicative Substation
Layout - Elevations