

C:\Users\lisa.bird\AOC_Archaeology_Group\Portal - 24926\Extra_Work\20210702\Graphics\GIS\Draft_figures\AOC24926_Figure1_20210713.mxd

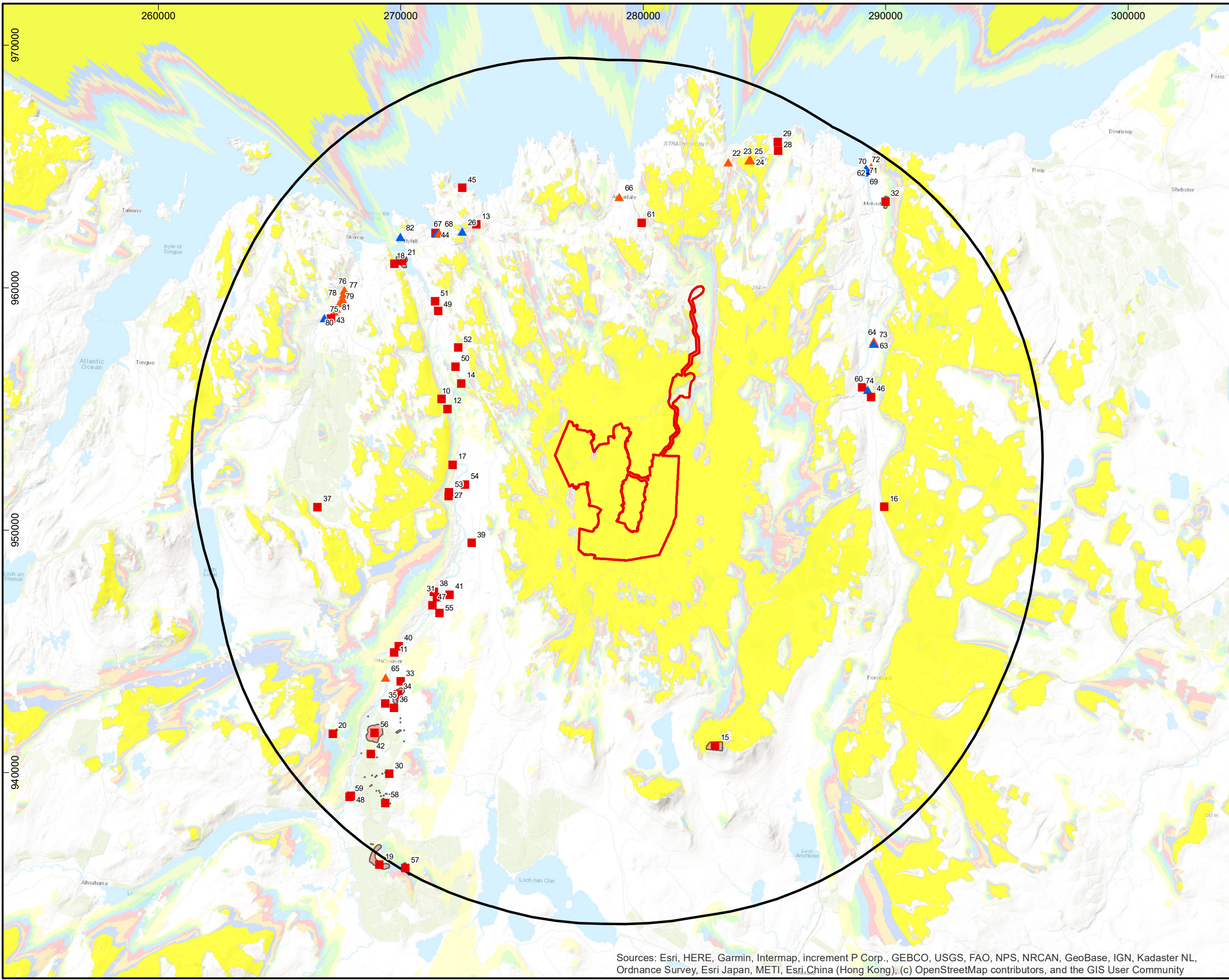


Figure	1
Designated heritage assets within 15km study area and Zone of Theoretical Visibility (ZTV)	
<p>Legend</p> <ul style="list-style-type: none"> Site Boundary 15km Study Area Scheduled Monument extent Scheduled Monument ▲ Listed Building- Category A ▲ Listed Building- Category B ▲ Listed Building- Category C No Visibility 1-5 Turbines 6-10 Turbines 11-15 Turbines 16-20 Turbines 21-25 Turbines 26-30 Turbines 31-35 Turbines 	
FOR	
SSE	
Drawn/checked:	LB/SO
DWG no:	01/24926/SUP/01/01
AOC Project No.:	24926
<p>(C) AOC Archaeology Group 2021</p>	
SYSTEM	Coordinate System: British National Grid Projection: Transverse Mercator Datum: OSGB 1936
SCALE	1:150,000@ A3
SCALE	
<p>Sources: Esri, HERE, Garmin, Intermap, increment P Corp., GEBCO, USGS, FAO, NPS, NRCAN, GeoBase, IGN, Kadaster NL, Ordnance Survey, Esri Japan, METI, Esri, China (Hong Kong), (c) OpenStreetMap contributors, and the GIS User Community</p>	