

OPERATIONS AND MAINTENANCE FACILITY

Arklow Bank Wind Park Phase 2
Public Consultation, 2021





OUR VISION

We at SSE Renewables plan to develop the first of the next generation of offshore wind parks in Ireland, through Arklow Bank Wind Park Phase 2, generating 520MW of renewable energy.

Arklow Bank Wind Park Phase 1, located off the coast of Co. Wicklow, is the first and only operational offshore wind farm in Ireland. It was constructed in 2003/04 consisting of seven wind turbines with a capacity of 25.2MW. Phase 1 is owned and operated by Arklow Energy Limited.

We propose to consolidate Co. Wicklow's position as the home of offshore wind in Ireland, through the further development of Arklow Bank Wind Park Phase 2. We plan to construct up to 62 turbines, with the capacity to generate 520MW of renewable energy, to power almost 450,000 homes and offset over half a million tonnes of carbon emissions each year.

These turbines will be built within the existing Foreshore Lease area, located 6km to 13km off the Co. Wicklow coastline, to the east of Arklow, covering an area approximately 27km long and 2.5km wide.

Jobs and Economic Contribution

The Arklow Bank Wind Park Phase 2 will create approximately 80 full time, direct local jobs. Up to 60 of these will be field based, with the balance based onshore. These roles will include site managers, supervisors, technicians, control room operators, engineers, vessel crew, stores and administration staff. The project will also support thousands of indirect and induced jobs during construction and over the project's lifetime.

The project will generate €860 million gross value-added for Ireland's economy €430 million of which will be delivered to Wicklow and north Wexford directly by supporting local businesses and supply chain in the region.

BENEFITS OF THE OPERATIONS AND MAINTENANCE FACILITY:



Regenerate Arklow Harbour South Dock



Low Impact, 'Nearly Zero Energy Building' and low carbon construction methods



Accommodate 80 jobs, created by Arklow Bank Wind Park Phase 2



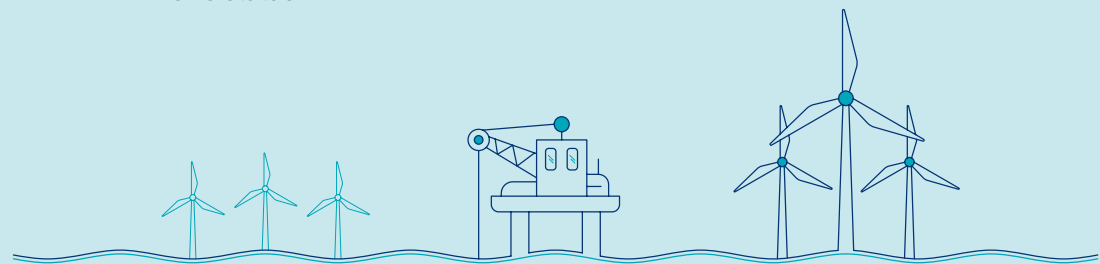
Landscaping and public paving for an enhanced public realm



Create a Sustainable Education Centre to complement Arklow's 'Decarbonisation Zone' status



Traffic and pedestrian management measures in the wider area



PUBLIC CONSULTATION OPERATIONS AND MAINTENANCE FACILITY

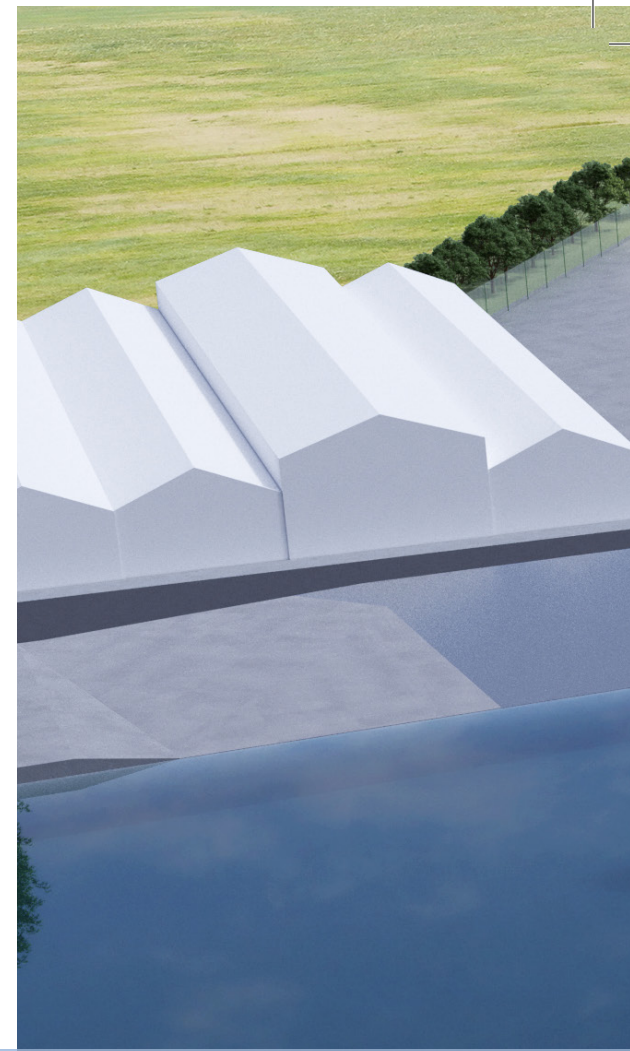
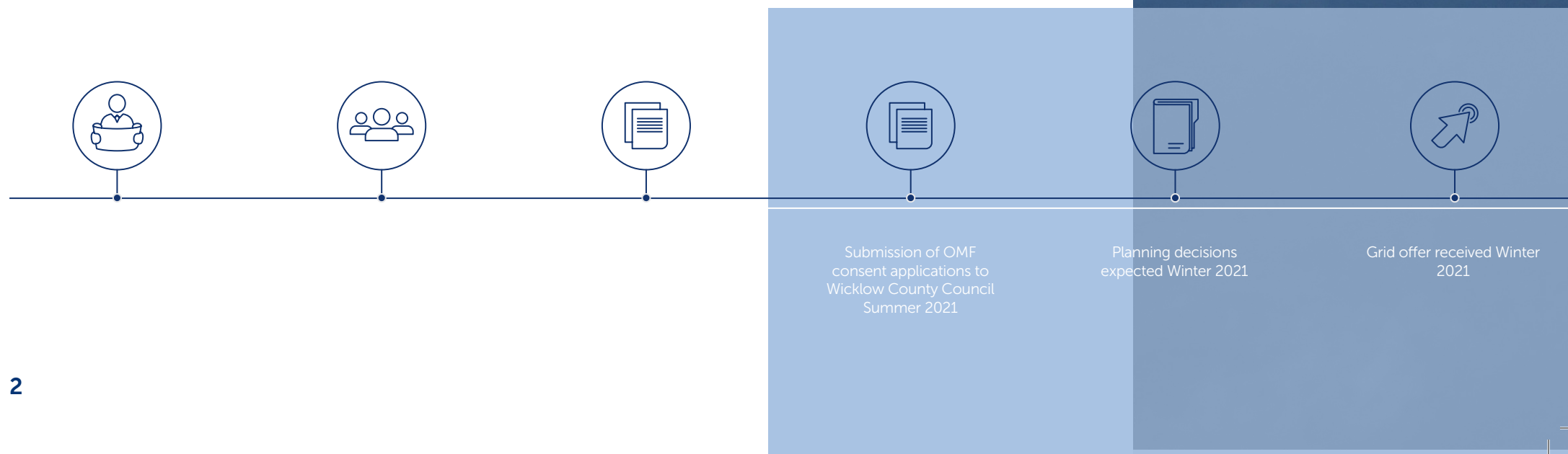
We will be running a Public Consultation over a three week period in June 2021. The purpose of this consultation is to provide the public with information about our plans for the Operations and Maintenance Facility and to invite feedback.

This booklet is designed to offer you key information about this element of Arklow Bank Wind Park Phase 2.

Feedback gathered from this phase will be used to inform our plans before a planning application is submitted to Wicklow County Council later this year.

This follows a previous Public Consultation which took place in October and November 2020 in relation to the Onshore Grid Infrastructure and Offshore Infrastructure. An application for the Onshore Grid Infrastructure planning permission has been submitted to An Bord Pleanála and an application to construct the offshore infrastructure under our existing Foreshore Lease has been made to the Department of Housing, Local Government and Heritage respectively.

ARKLOW BANK WIND PARK PHASE 2 TIMELINE





Secure Government support via Renewable Energy Support Scheme (RESS) Spring 2022



Financial Close / Greenlight to Proceed Spring 2023



Appoint contractors and hold 'Meet the Buyer' supply chain engagement event 2023



Construction 2023/2024/2025



Project Completion 2025

OPERATIONS AND MAINTENANCE FACILITY (OMF)

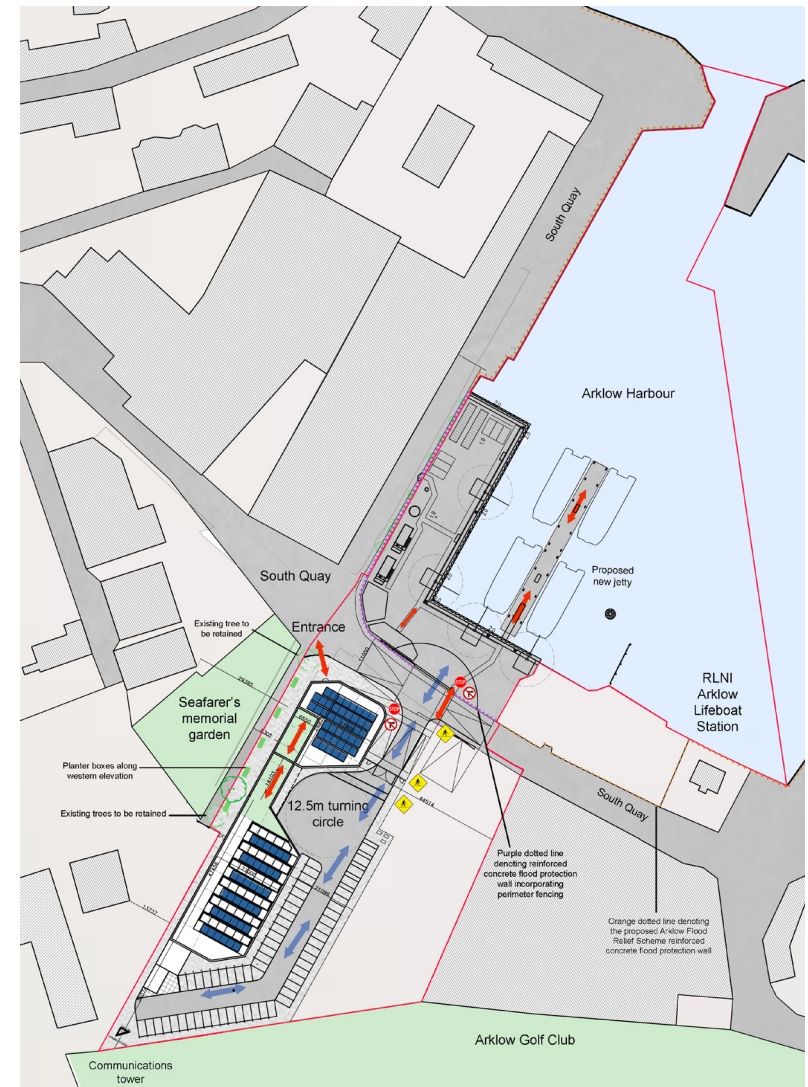
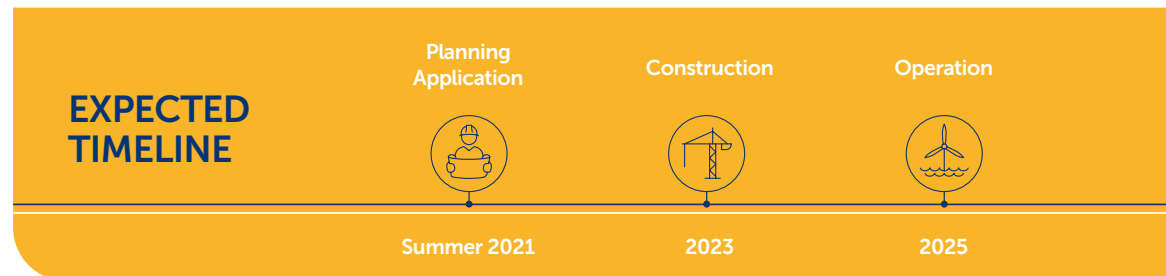
We propose to rejuvenate the South Dock in Arklow Harbour, by constructing a state-of-the-art purpose-built Operations and Maintenance Facility (OMF).

The facility will act as the support base for both the onshore and offshore elements of the Arklow Bank Wind Park Phase 2. The base will be used to control, operate and maintain the wind farm over its operational lifetime.

In keeping with Arklow town's designation as a Decarbonisation Zone, the proposed OMF has been developed through an integrated sustainable design process, focussed on social, environmental and economic benefits for users, now and into the future.

The development has been designed to be a 'Nearly Zero Energy Building' (NZEB), meaning the building will operate to a very high energy performance. The nearly zero amount of energy required to run the building will be provided from renewable sources produced on site or nearby. The design has incorporated the following measures to ensure an efficient, low impact facility is created:

- Design for ease of maintenance
- Use of materials that reduce embodied energy, recycled and renewables
- Minimise the use of water by using water efficient fittings and harvesting rainwater for use in toilets.
- Maximised opportunities for soft landscaping on roof terraces.
- High performance facades
- Optimised daylighting with thermal comforts
- Renewable energy sources (PV Panels)
- Integrated flood measures that complement the future plans for the vicinity
- Efficient flow of pedestrian and vehicular movement along the South Quay
- Landscaping and public paving area for an enhanced public realm.



The OMF comprises two primary components which will serve the wind park on a daily basis:

• **Onshore Infrastructure:**

- An office and meeting space for approximately 80 employees.
- A Sustainable Education Centre.
- Warehousing for wind farm components.
- Welfare facilities for staff.
- Secure on-site car parking for up to 60 vehicles including 10 visitor spaces, 20 bike storage and electric vehicle charging facilities.
- A communication mast, up to 40 m in height, will be placed in the south western corner of the site, behind the OMF building.
- A new crossing of South Quay Road to facilitate movements of crew and equipment between the OMF building and the quayside.
- The crossing will be integrated with the proposed Arklow Flood Relief Scheme flood defences and will assist in traffic calming on the South Quay Road.

• **Nearshore Infrastructure:**

- Designated quay and quayside berth facilities for Crew Transfer Vessels (CTVs) with access to and from the onshore infrastructure.
- Installation of a pontoon system to provide for safe boarding, loading and unloading of CTVs;
- Associated gangway for pontoon access from quayside to pontoon.
- Cranes will be used for loading and unloading of equipment to and from the CTVs.
- Fuelling and waste disposal facilities.
- Demolition and removal of an existing disused syncrolift and the removal of two sunken vessels. Approximately 95 m of the existing quay wall may also require remediation works.
- The development will require the dredging of up to 6,000 m³ of material from the nearshore area, within the South Dock to maintain navigable depth for the CTVs. The dredged material will be disposed of in accordance with environmental regulations.

SUSTAINABLE EDUCATION CENTRE

A Sustainable Education Centre will be located on the top floor of the OMF building overlooking Arklow Harbour. This centre is intended to act as a point of connection between the offshore wind farm, the operations, and the wider community.

The Sustainable Education Centre has been designed as a multi-functional space with the capacity to accommodate large groups for exhibitions, guided tours and sustainability-themed educational events. Working with an external facilitator and in collaboration with the local community, we will explore possible themes that the centre may address. It is intended that the Sustainable Education Centre will support Arklow's goals as a Decarbonisation Zone.

The site for the OMF is situated along a route that has the potential for the development of themed walking trails, for example biodiversity, which if embraced by the wider community, and supported by SSE Renewables, could ensure that the theme of sustainability is extended to wider public amenities.

We will work to establish a Community Liaison Group to explore how the operations facility can be developed in a manner that is reflective of Arklow's status as a Decarbonisation Zone, of the town's heritage, of the harbour itself, and the evolving needs of the community. Please contact our Community Engagement Manager, Deborah Coleman if you wish to get involved in this process.



SUPPORTING THE COMMUNITY

SSE Renewables is Ireland's largest generator of wind power and provides voluntary community funding to community groups near each of our onshore wind farms across the country. Since we first began community funding in Ireland in 2002, we have awarded over €10 million from our operational wind farms supporting more than 4,000 local projects. Annually we share approximately €2 million with local community projects across the island.

Wicklow Bay Sea Angling Club



Seal Rescue Ireland

We are committed to providing a multimillion, annual Community Fund for Arklow Bank Wind Park Phase 2, in accordance with Government guidelines. Our intention is that this Fund would support both onshore and maritime communities all along the coastline of Wicklow and North Wexford.

In order to progress Phase 2 of Arklow Bank Wind Park, SSE Renewables must secure the support of the Government, through the Renewable Energy Support Scheme (RESS), in 2022. As part of this process the Government will determine key parameters for a Community Fund for offshore wind.

Our support for the community doesn't wait until the wind farm commences operation. During the development phases of our projects we sponsor many local community groups, projects and organisations, especially those with a marine focus. In the last two years we have been pleased to support Seal Rescue Ireland's Virtual Education Programme, Arklow Cancer Support, Arklow, Wicklow and Courtown RNLI branches, East Coast Samaritans, Arklow Tidy Towns, Wicklow Sailing Club, Wicklow Bay Sea Angling Club, Wicklow Surf Lifesaving and Meals on Wheels in Arklow, Wicklow Town and Courtown.

We have also established a €50,000 annual Fisheries Fund which will run for the duration of the development phase and we are currently seeking suggestions from harbour users on how best to spend this fund.

Castletown Development Group



HAVE YOUR SAY

We have been engaging with local stakeholders in relation to the Arklow Bank Wind Park Phase 2 for a number of years.

We are committed to working with local communities and stakeholders to gather feedback and local information that will inform the project on an ongoing basis. Local knowledge is key to us so that we understand the issues that are important to the community and can refine our plans accordingly.

We commit to keep you informed as the project develops and will seek your feedback in relation to key project activities.

FIND OUT MORE

We have created a dedicated virtual exhibition which is accessible via our project website where you can find out more information about our vision for the next phase of Arklow Bank Wind Park.

www.sserenewables.com/arklowbank

Here you can find out more about more about:

- The Offshore Infrastructure
- The Onshore Grid Infrastructure
- Plans for our new purpose-built Operations and Maintenance Facility and Sustainable Education Centre

You will also find an interactive feedback form which you can complete online or download and return via email or post.

Write to us!

If you would like to send us a letter or post your feedback form to us mark the envelope for the attention of Deborah Coleman, Arklow Bank Wind Park, and send it to:

**SSE Renewables,
South County Business Park,
Red Oak South,
Leopardstown,
Dublin 18,
D18 W688**

FIND OUT MORE

Watch out for our leaflets:

We will deliver 15,000 leaflets to homes and retail units during this consultation phase. These leaflets will summarise the full project brochure. Hard copies of this brochure are available on request.

Join our project team for an Online Community Briefing:

Ordinarily, we would like to host a public event at a local venue to brief you on this project in person. Unfortunately under Covid-19 restrictions we are not permitted to do this, so we have planned an online webinar where members of our project team we will offer a briefing.

We invite you to join this live event on Wednesday, 16th June at 7pm via srenewables.com/arklowbank. You will be able to meet the team, hear more about plans for Arklow Bank Wind Park Phase 2 and be able to ask questions you may have.

Self-guided public exhibition and information point:

You can find out more about the project by visiting our public exhibition space at Bridgewater Centre, Arklow and information outlet at Main Street, Courtown.

Project brochures and feedback forms will be available to the public at the exhibition throughout this Public Consultation or via post from Community Engagement Manager Deborah Coleman.

Call, text, or email our Community Engagement Manager:

Deborah Coleman is our dedicated Community Engagement Manager for Arklow Bank Wind Park. Locally-based, Deborah is available Monday to Friday between the hours of 9am and 5pm, or alternatively by appointment outside of these hours.

Deborah is available on **087 1457603**, or by email at Deborah.coleman2@sse.com

YOUR TEAM



Barry Kilcline
Head of
Offshore,
Ireland



James O'Hara
Project
Manager



Jason Cooke
Head of
Communications
and Brand



Kaj Christiansen
Development
Package
Manager



Louise Glennon
Head of External
Affairs, Ireland



Deborah Coleman
Community
Engagement
Manager



Brendan Dillon
Fisheries Liaison
Officer



Matthew Vesey
Consent
Manager



John O'Sullivan
Environmental
Advisor

ABOUT SSE RENEWABLES

We're SSE Renewables, a leading developer, owner and operator of renewable energy across Ireland and the UK.

Through our sister company SSE Airtricity, the wind energy we produce here supplies more Irish homes and businesses than any other company.

Now, through our plans to develop the next phase of Arklow Bank Wind Park, we're leading Ireland's drive to generate the offshore wind energy we need to fight climate change and create local jobs as part of a green recovery.

BENEFITS OF ARKLOW BANK WIND PARK PHASE 2



Reduce Ireland's annual carbon emissions by around 1% - offsetting over half a million tonnes of harmful CO2 per annum*



Capital investment of up to €2bn to power our green recovery



Generate 520MW of electricity - enough to power almost 450,000 homes with green energy*



Deliver €870 million gross value-added nationally, €430 million of which will be delivered locally across Wicklow and North Wexford.



Contribute to Ireland's Climate Action Plan target of 1GW of offshore wind by 2025



Create around 80 full-time direct local jobs, and thousands of indirect jobs during construction and over the project's lifetime



Contribute millions of euro annually in Community Benefit Funding and local commercial rates



*433,829 homes powered based on projected capacity, typical projected wind load factor of 40%, and typical annual consumption (4,200kWh). Quoted 530,225 tonnes of carbon emissions abated based on projected annual MWh output and average CO2 Emissions (0.291t/MWh) in the All-Island Single Electricity Market, and published by the CRU in its Fuel Mix Disclosure and CO2 Emissions for 2018, September 2019.



SSE Renewables, South County Business Park, Red Oak South, Leopardstown, Dublin 18, D18 W688.