

Key

- Site Boundary
- Turbine
- LIDAR
- Compound Location
- Floated Track
- Founded/Cut Track
- ▭ Substation, Welfare Facility and Store
- Temp. Construction
- ▨ Compound, Security, Storage and Batching Plant
- Hardstanding
- ▨ Borrow Pit Search Area
- Bedrock Geology**
- ▭ Morar Group - Psammite *Morr-psamm*



Scale 1:20,080 @ A3
0 0.2 0.4 Km

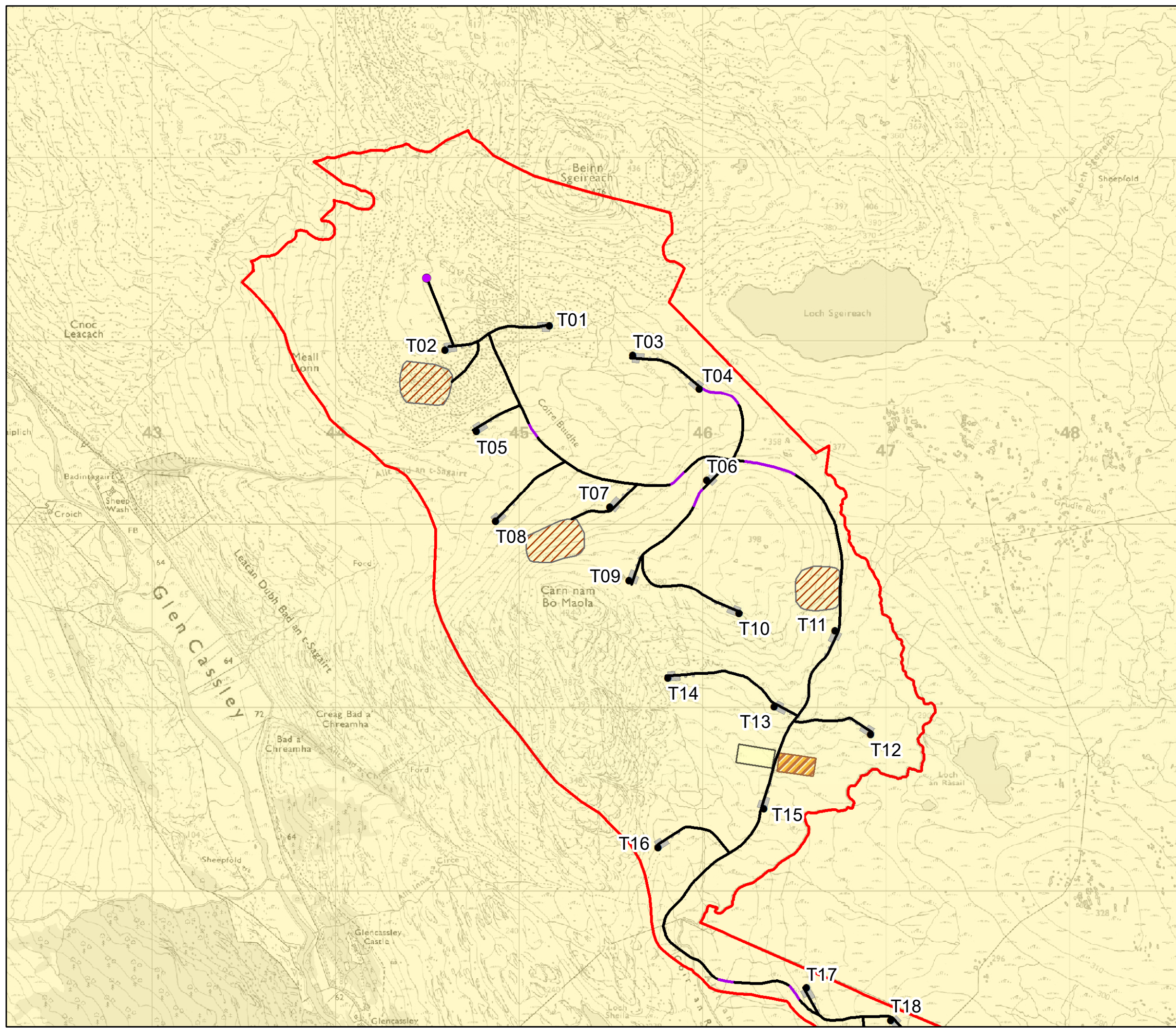
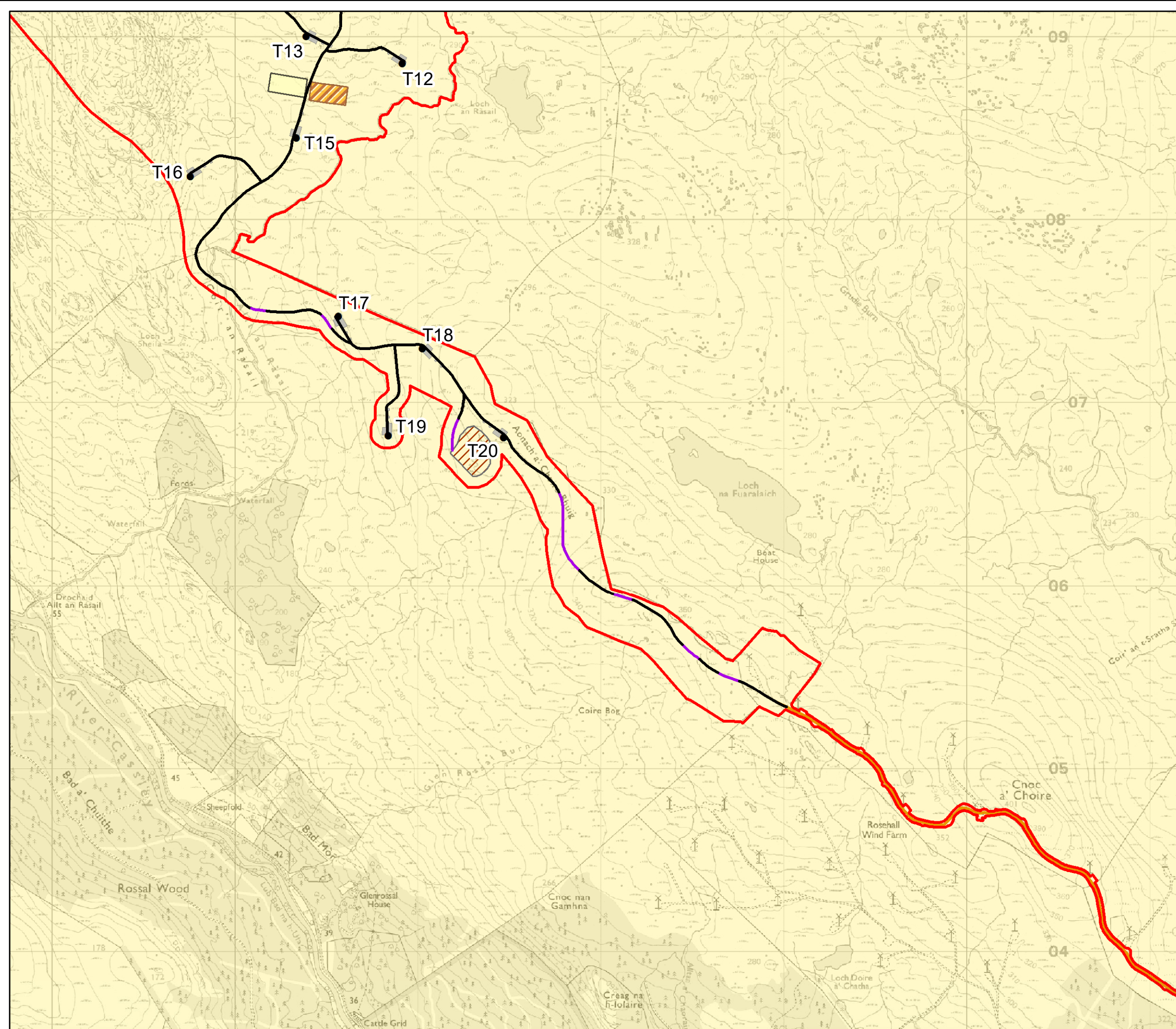
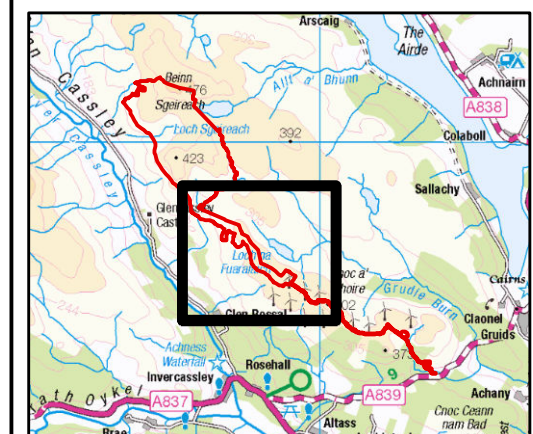


Figure 10.1.1a
Bedrock Geology



Key

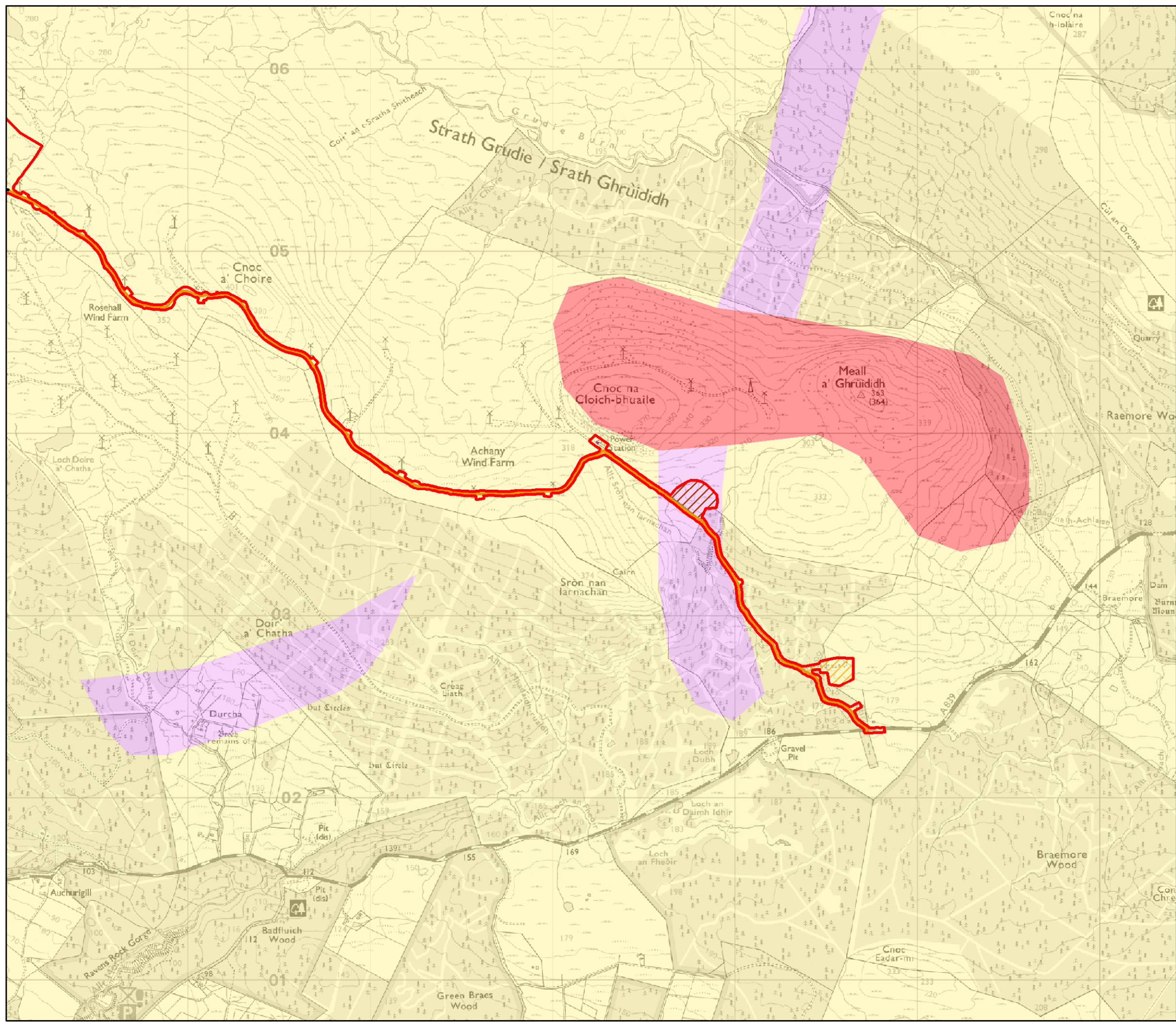
- Site Boundary
- Turbine
- Floated Track
- Founded/Cut Track
- Existing Track to be Upgraded
- Substation, Welfare Facility and Store
- Temp. Construction Compound, Security, Storage and Batching Plant
- Hardstanding
- Borrow Pit Search Area
- Bedrock Geology**
Morar Group - Psammite *Morr-psamm*



Scale 1:20,080 @ A3
0 0.2 0.4 Km



Figure 10.1.1b
Bedrock Geology



Key

- Site Boundary
- Founded/Cut Track
- Existing Track to be Upgraded
- Extension to existing operations building
- Temp. Construction Compound, Security and Storage
- Borrow Pit Search Area

Bedrock Geology

- Unnamed Igneous Intrusion, Late Silurian To Early Devonian - Felsic-Rock *Uisd-felsr*
- Morar Group - Psammite *Morr-psamm*
- Lewisian Complex - Gneiss *L-gnss*



Scale 1:20,080 @ A3
0 0.2 0.4 Km



Figure 10.1.1c
Bedrock Geology