



Glencassley Wind Farm proposal

Public Exhibition



Welcome

Glencassley Wind Farm proposal

Welcome

Thank you for taking time to come along to today's exhibition on the proposed Glencassley Wind Farm.

It is important to us that we hear and understand your views, so we welcome your feedback. Please feel free to chat with us or just take a feedback form if you prefer.

Project Overview

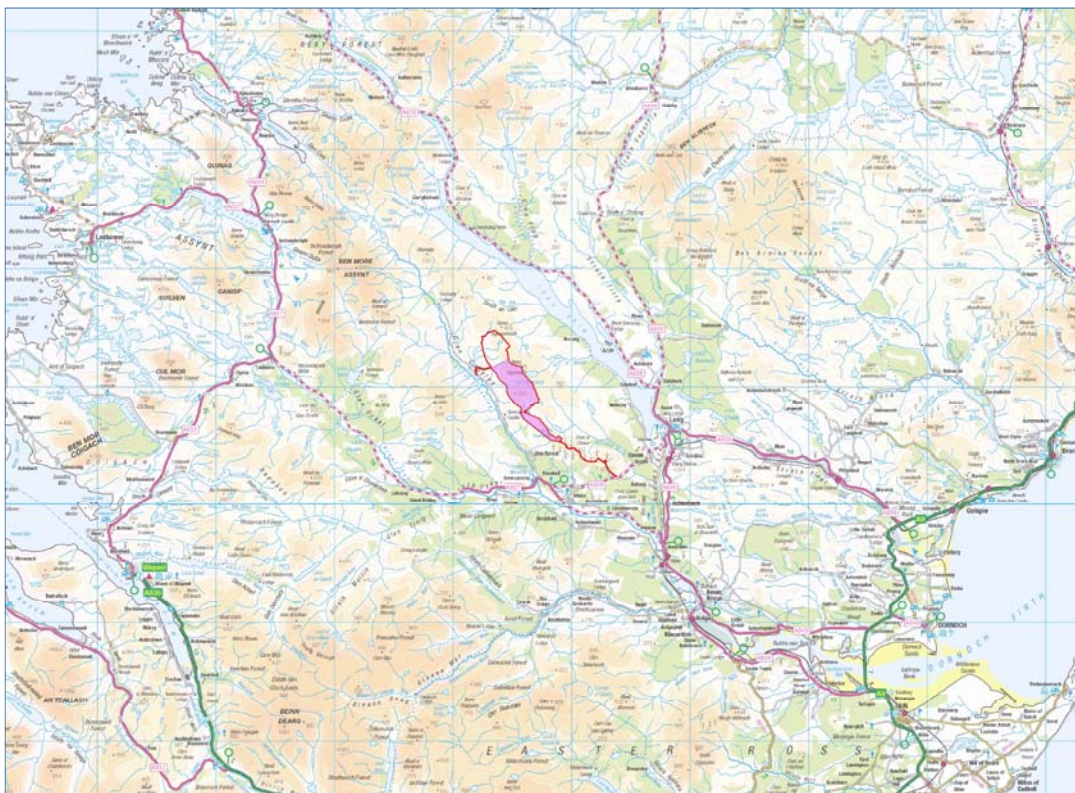
This exhibition presents proposals to construct and operate a wind farm on Glencassley and Glenrossal Estates (close to Achany), near Lairg, Sutherland.

A previous application submitted in 2012 for a 26 turbine site with a tip height of 126.5m was supported by The Highland Council, but was ultimately refused by Scottish Ministers in 2015 due to impacts on the National Scenic Area and Wild Land.

Due to increased demand for renewable energy and the requirement to reduce carbon emissions further, the opportunities for renewable energy generation at Glencassley are being revisited, taking into account previous concerns.



Site Location Plan





Key Distances:

- 7 km north of Rosehall
- 11.8 km to Oykel Bridge
- 12 km west of Lairg
- 22.5 km from Bonar Bridge
- 23 km from Ardgay



Key

-  2012 Site Boundary
-  Proposed Development Area

Glencassley Wind Farm proposal

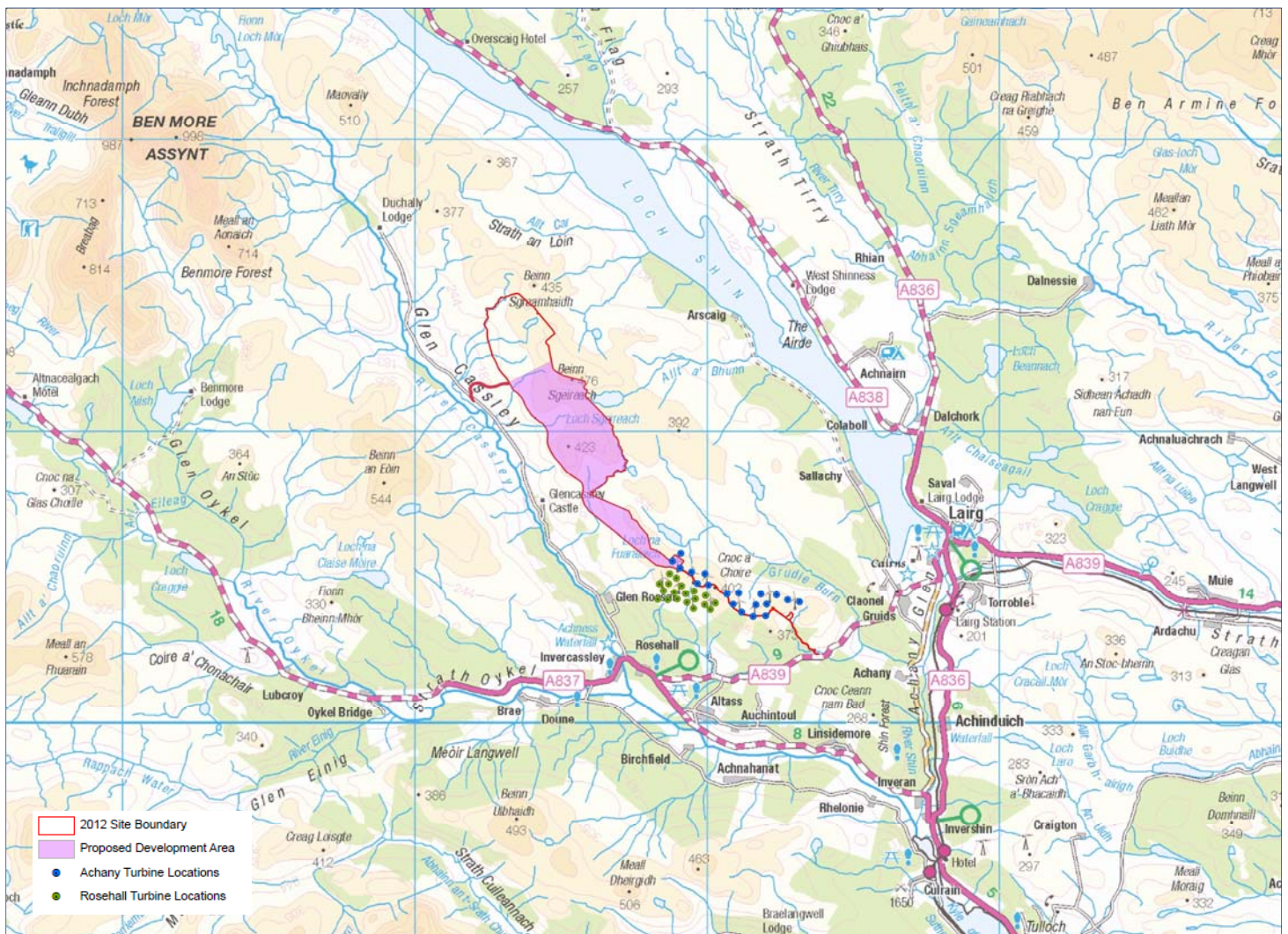
The Project

The site offers excellent potential for a wind farm development due to its wind resource and proximity to the neighbouring wind developments at Achany and Rosehall.

The project team are in the process of reviewing the previous design to optimise the layout for the wind turbines which are currently available, whilst taking into consideration the concerns previously raised about the prominence and proximity of turbines in views from the nearby Assynt Coigach National Scenic Area (NSA) and to core areas of wild land.

It is anticipated that turbines of between 150m and 200m tip height and an installed capacity in excess of 50 MW could be achieved in the proposed development. This would be subject to further technical and environmental review throughout the Environmental Impact Assessment (EIA) process.

The Proposed Development Area



Glencassley Wind Farm proposal

Environmental Assessments

A team of independent consultants will be employed to carry out technical assessments and to advise on the environmental issues associated with the Proposed Development. These experts will work with us during the design process, carry out environmental impact assessments and will prepare the documentation (chapters, technical appendices, maps and visualisations etc) for the EIA Report.

Each subject which requires being assessed under EIA regulations will be presented as a separate chapter in the main body of the EIA Report, or included as a technical appendix.

The core environmental study areas are:

- Ecology, Biodiversity and Nature Conservation
- Landscape
- Ornithology
- Hydrology, Geology and Hydrogeology
- Cultural Heritage
- Traffic, Access and Transport
- Noise and Vibration
- Aviation
- Carbon Assessment
- Socio Economics



Water Vole



Red Grouse

Grid

Turbines would be connected via underground cables to the on site substation, potentially at Achany, which would convert the electricity generated into an appropriate voltage for onward transmission into the National Grid at Shin Power Station.

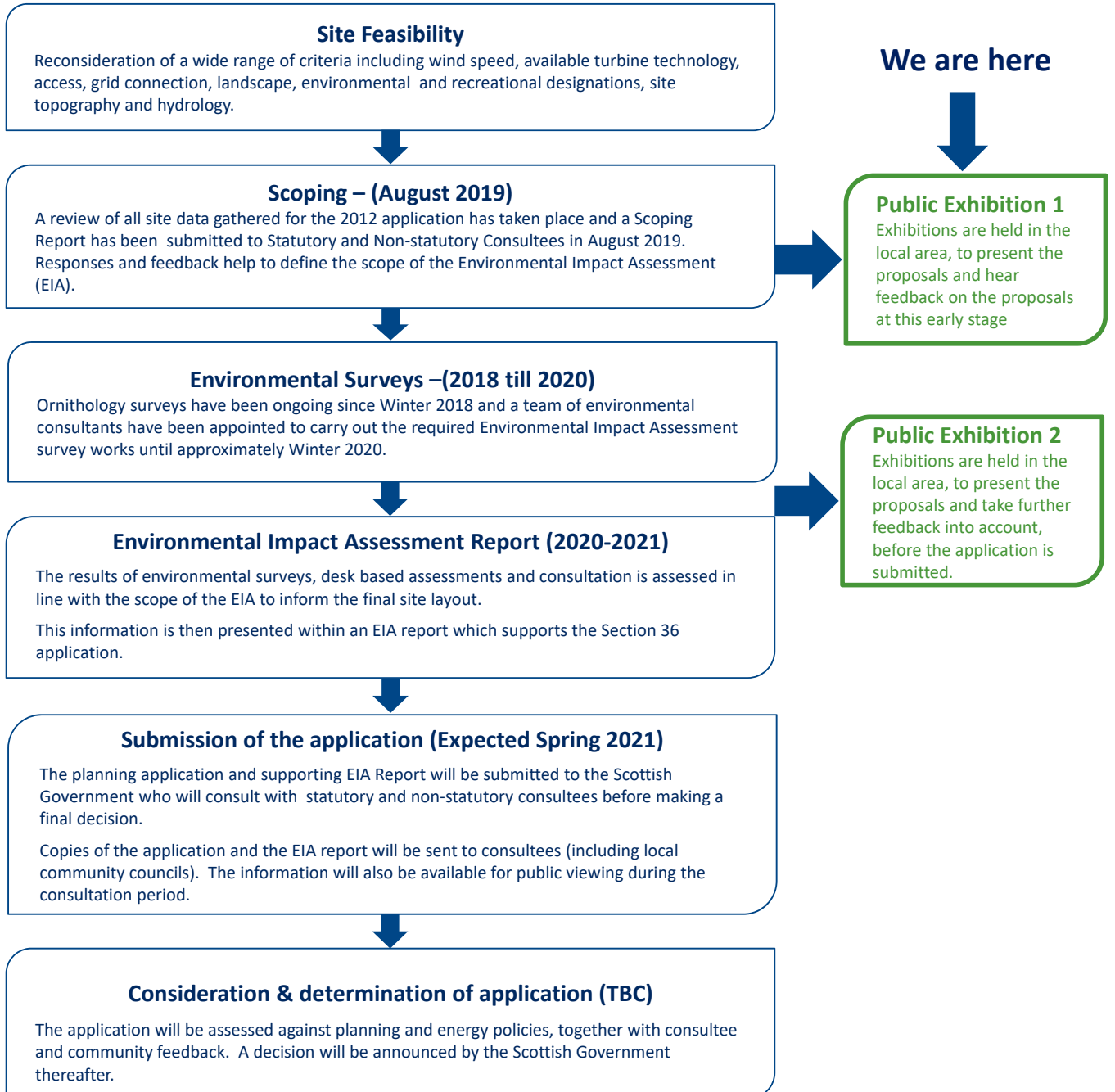
The site connection to the National Grid falls under a separate application process.



Shin Power Station

Glencassley Wind Farm proposal

The Development Process and Indicative Timeframes



Achany Wind Farm

Glencassley Wind Farm proposal

SSE Renewables - Who we are



Headquartered in Perth, SSE employs around 20,000 people across the UK and our aim is to provide the energy people need in a reliable and sustainable way. SSE delivers energy to customers through a diverse range of renewable energy generation comprising around 3,309MW of renewable capacity with 2,731MW of this in GB:

Hydro:
1,150MW

Onshore
wind:
2144MW

Offshore
wind:
932MW

Pumped
storage:
300MW

Biomass:
37MW

In November 2018, SSE brought together the development, operation and ownership of its renewable energy assets in the UK and Ireland under a single entity to be known as SSE Renewables.



Achany Wind Farm

Our 2030 Goals

SSE's approach to sustainability is centred around our four 2030 goals. These are aligned to the United Nations Sustainable Development Goals (SDGs) which provides a shared blueprint for global co-operation to tackle some of humanity's biggest challenges by 2030, such as poverty, biodiversity loss, inequality and climate change.



Cut our carbon intensity by 50%

Reduce the carbon intensity of electricity generated by 50% by 2030, compared to 2018 levels, to around 150gCO₂/kWh.



Help accommodate 10m electric vehicles

Build electricity network flexibility and infrastructure that helps accommodate 10 million electric vehicles in GB by 2030.



Treble renewable energy output

Develop and build by 2030 more renewable energy to contribute renewable output of 30TWh a year.



Champion Fair Tax and a real Living Wage

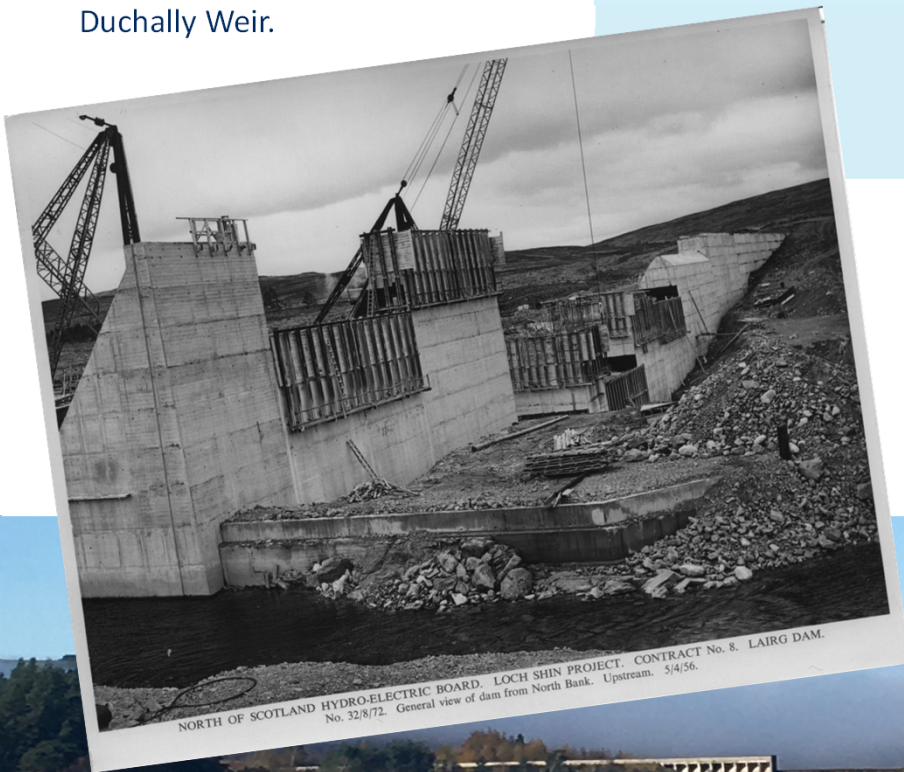
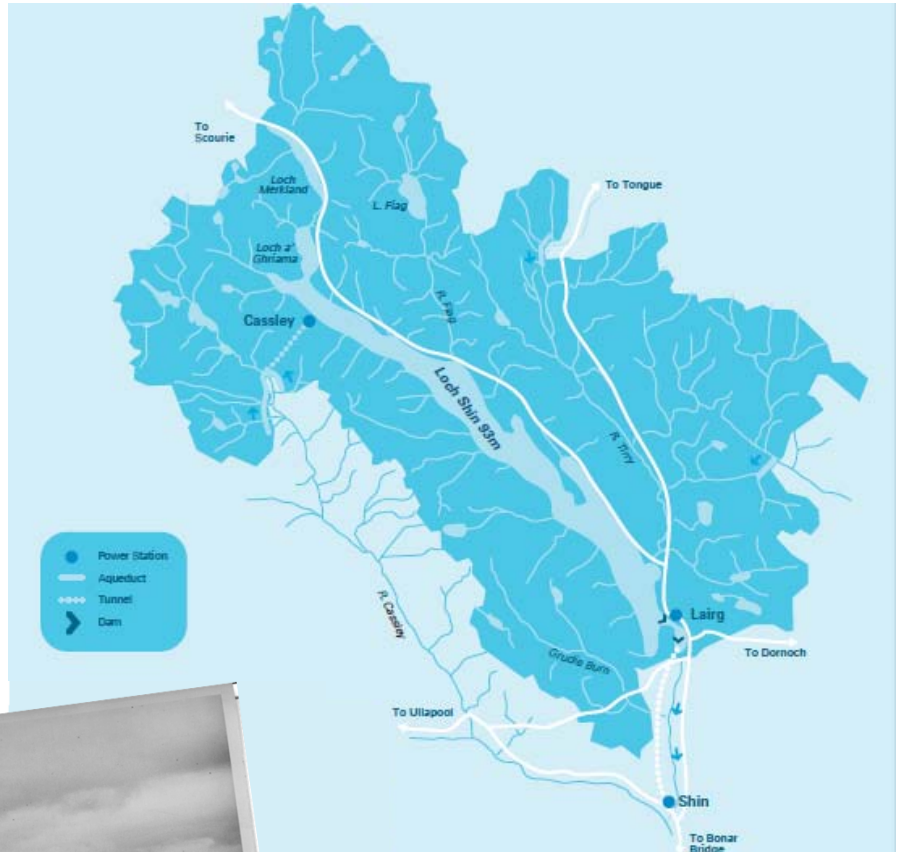
Be the leading company in the UK and Ireland championing Fair Tax and a real Living Wage.

Glencassley Wind Farm proposal

Our Hydro Heritage

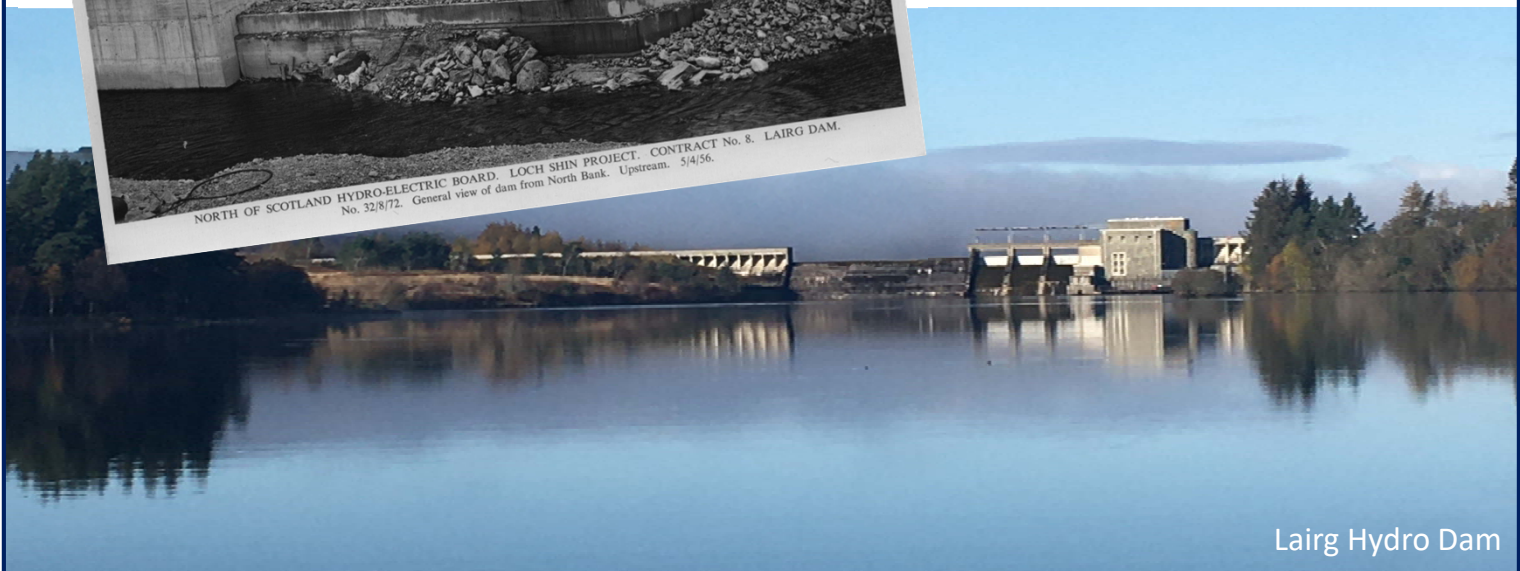
December 2018 marked 70 years since the switch-on of the first hydro power stations developed by the North of Scotland Hydro Electric Board - a monumental moment in the company's hydro history.

Close to Glencassley is Shin hydro electric scheme, (just over 32 MW of total installed capacity). The hydro scheme utilises water collected from the River Cassley by two aqueducts and diverted into a head-pond at Duchally where it drives two small turbines in the power station within Duchally Weir.



	Gross head* (metres)	Installed capacity (megawatts)	Average annual output (million units)
Cassley	113	10	26
Lairg	10	3.5	12
Shin	81	18.6	125

* The 'head' is the difference in height between the water supply feeding the power station and the turbines.

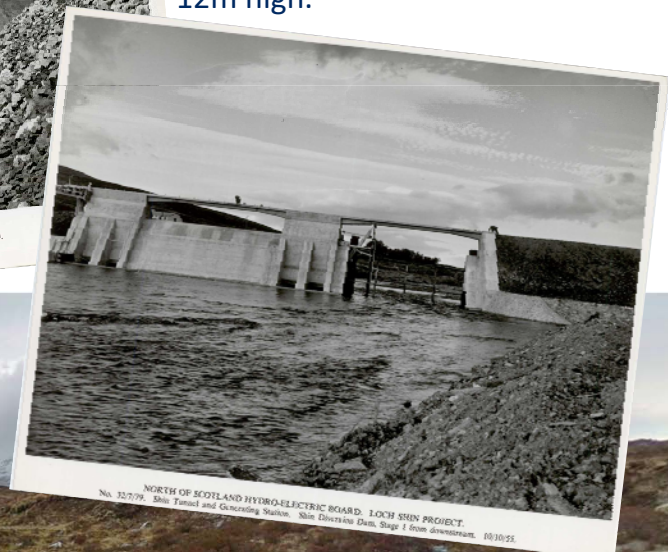


Glencassley Wind Farm proposal

Our Hydro Heritage



From Duchally Weir, the water flows through a tunnel to the 10 MW Cassley Power Station on the western shore of Loch Shin. The water level in Loch Shin, the main storage reservoir, was raised by about 11m by the construction of the Lairg Dam. This concrete embankment is 427m long and 12m high.



Glencassley Wind Farm proposal

Working with communities

Since Glencassley's neighbouring Achany Wind Farm was constructed, many local and Highland wide community initiatives have been brought to life as a result of the community fund which has awarded or committed to spend £809,543.20 since March 2010. Between 2010 and 2035 we expect to invest **£2.5million** in local projects.

£6.6m

invested in 2018/19

increase of

30% from 17/18

413 Projects
Funded

decrease of

11% from 17/18

Average award of

£16,080

increase of

43% from 17/18



Kyle of Sutherland Hub

£29,148 awarded to the multi use family and community hub. The centre is used by the Creich, Ardgay and Lairg areas and aims to address issues of geographic disadvantage and social isolation. There is also a bespoke space for after school and holiday clubs, a soft play area and café.

Falls of Shin Visitor Centre

£55,037 was granted to the Kyle of Sutherland Development Trust, to help with the re-build of the Falls of Shin visitor centre.



For more information on the Achany community fund please contact:

FIONA MORRISON

Community Investment Manager

Tel: 01463 728376

Email: fiona.morrison@sse.com



Kyle of Sutherland Apprenticeship Scheme



The Achany Community Investment Fund offers an apprenticeship scheme as part of its efforts to ensure wide ranging and long lasting impact.

An apprenticeship scheme grant helps with costs involved in business support, travel accommodation and training of an apprentice

The scheme has supported more than 19 people, with 7 of these currently active



Bradbury Centre

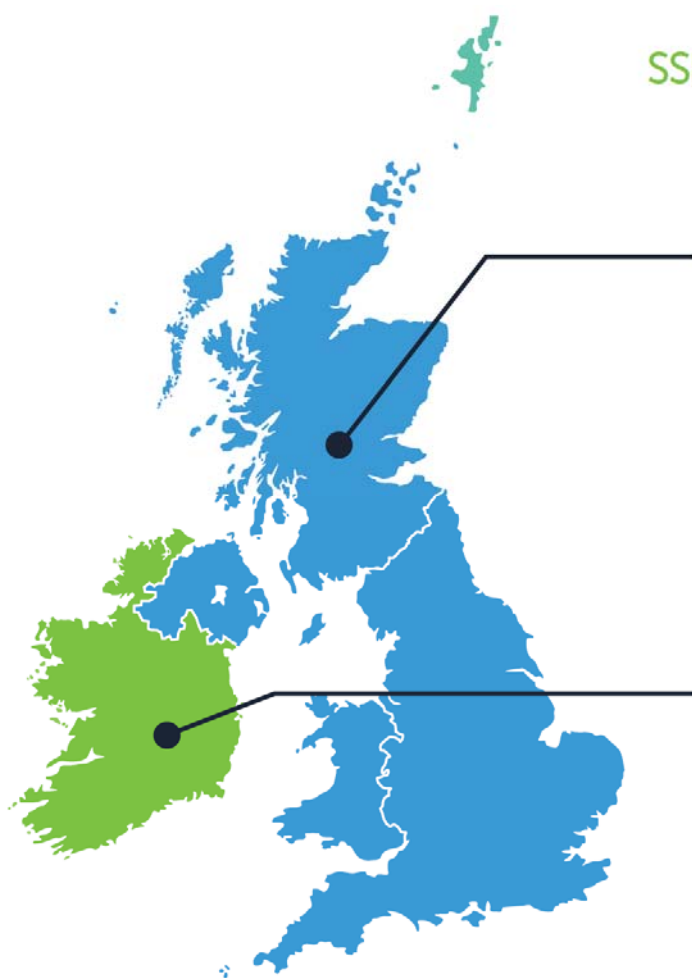
£9296 was awarded to Creich Croick & Kincardine District Day Care Association to enable the purchase of new furniture to accommodate an increase in client numbers.

Glencassley Wind Farm proposal

Why do we need renewable energy?

SSE is committed to investing in low carbon infrastructure and the next five years are critical if the UK is to take climate action and help to deliver challenging targets.

Renewables are a key part of SSE's existing hydro heritage and future growth plans. It has a wind development pipeline of over 8GW, including an onshore wind pipeline of over 1GW of potential new-build projects and an offshore wind development pipeline of over 7GW. SSE believes this pipeline of new assets will play a critical role in helping the UK and Ireland achieve their decarbonisation goals, and contribute to the ultimate goal of zero carbon electricity.



SSE'S 2018/19 ECONOMIC CONTRIBUTION

£8.9bn

Contribution to UK GDP (of which £1.6bn was contributed to Scottish GDP)



€689m

Contribution to Irish GDP



£3.9bn

Investment in renewable energy since 2010

8GW

Onshore and offshore wind development pipeline

Sharing Economic Value

Contributing to GDP and jobs Investment in low-carbon infrastructure contributes to the value SSE creates for the UK and Irish economies. SSE remains one of the few companies to publish its contribution to GDP alongside its financial results, understanding that the wider economic contribution it makes goes beyond profits. Since 2011/12, SSE has contributed a total of £75.2bn and €6.8bn (in 2018/19 prices) to UK and Irish GDP respectively. Of this contribution to UK GDP, £8.6bn was in Scotland.

Glencassley Wind Farm proposal

What happens next?

Once the assessments are completed the EIA Report will be prepared, however, this is anticipated to take around a further year.

During this time, we would be happy to stay in touch and provide project updates, or attend local meetings to answer questions. Please let us know if this would be of interest to you. We have feedback forms available and we would welcome any comments.

For further information, please contact our Project Liaison Manager:



murray.west@sse.com



sse.com/glencassley



07741 355 461



SSE – Murray West
1 Waterloo Street
Glasgow
G2 6AY



[@SSER_Highlands](https://twitter.com/SSER_Highlands)

