

Key

- Site Boundary
 - Turbine
 - LiDAR Compound Location
 - Floated Track
 - Founded/Cut Track
 - Substation, Welfare Facility and Store
 - Temp. Construction Compound, Security, Storage and Batching Plant
 - Hardstanding
 - Borrow Pit Search Area
 - Ephemeral Stream
 - Natural Watercourse
- Hydrological Assessment of GWDTE Potential**
- Not likely to be highly groundwater dependent

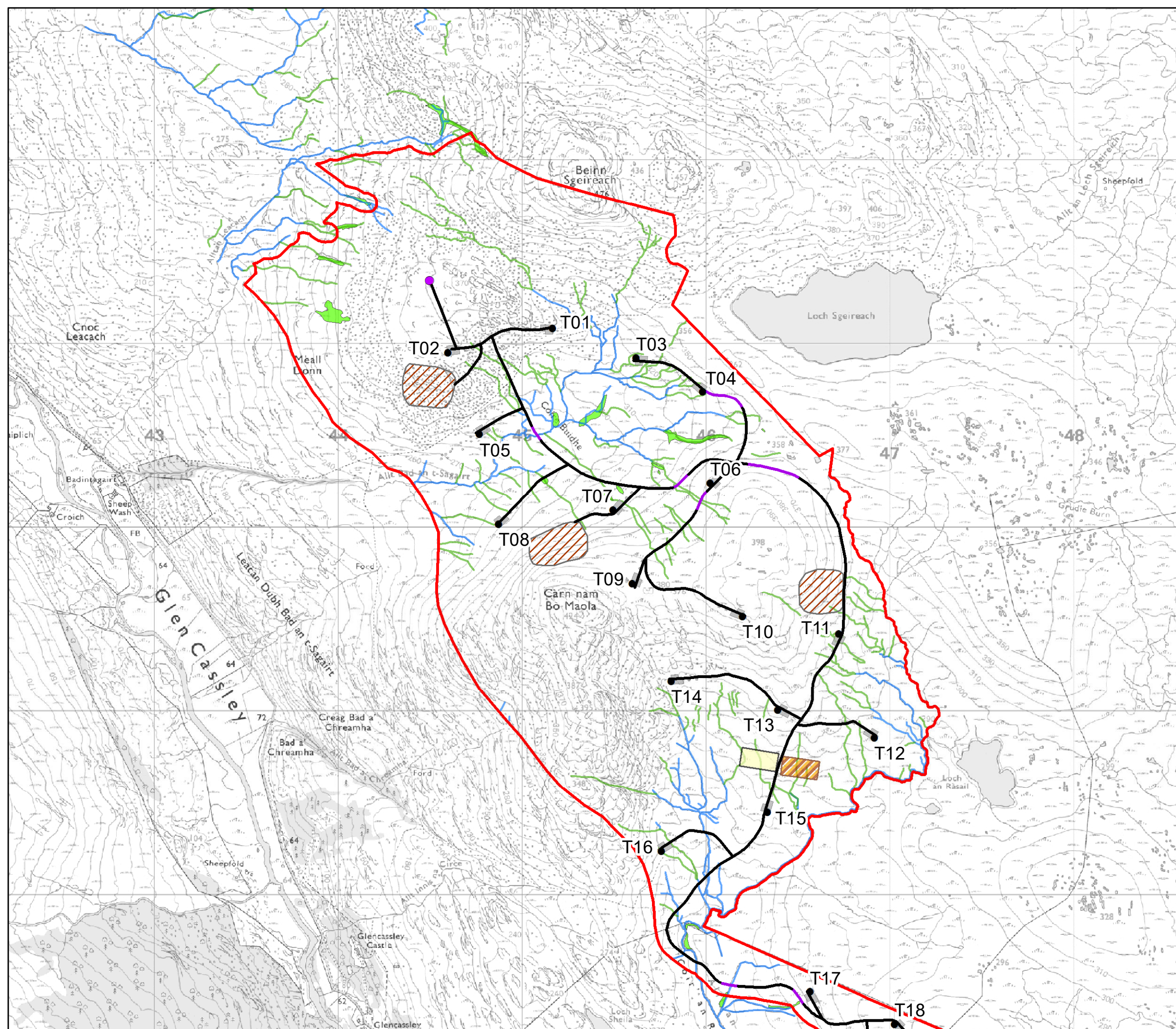


Scale 1:20,080 @ A3
0 0.2 0.4 Km



Figure 10.1.7a
Hydrological Assessment of GWDTE Potential

Achany Extension Wind Farm
EIA Report



Key

- Site Boundary
- Turbine
- Floated Track
- Founded/Cut Track
- Existing Track to be Upgraded
- Substation, Welfare Facility and Store
- Temp. Construction Compound, Security, Storage and Batching Plant
- Hardstanding
- Borrow Pit Search Area
- Ephemeral Stream
- Natural Watercourse

Hydrological Assessment of GWDTE Potential

- Not likely to be highly groundwater dependent

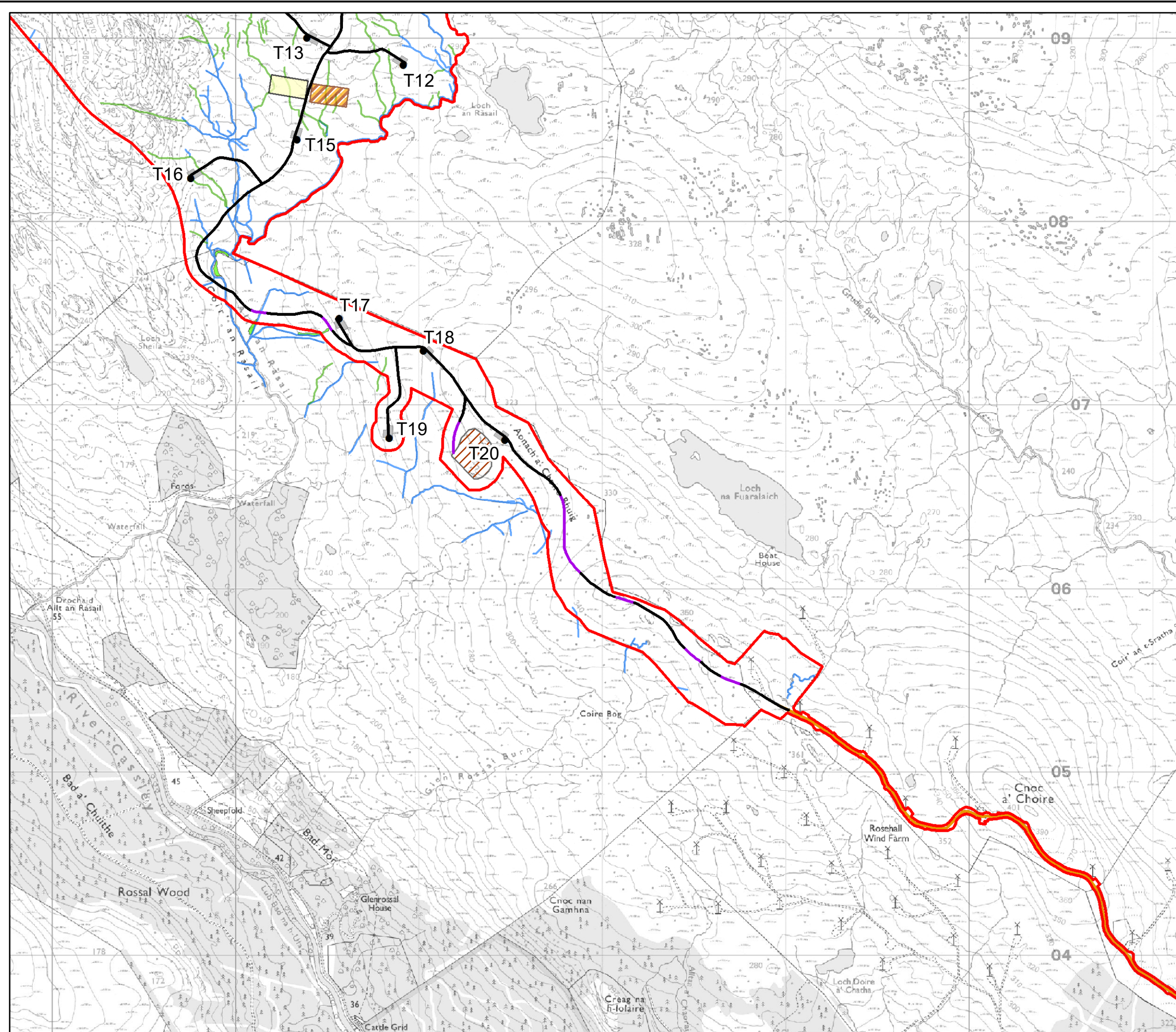


Scale 1:20,080 @ A3
0 0.2 0.4 Km



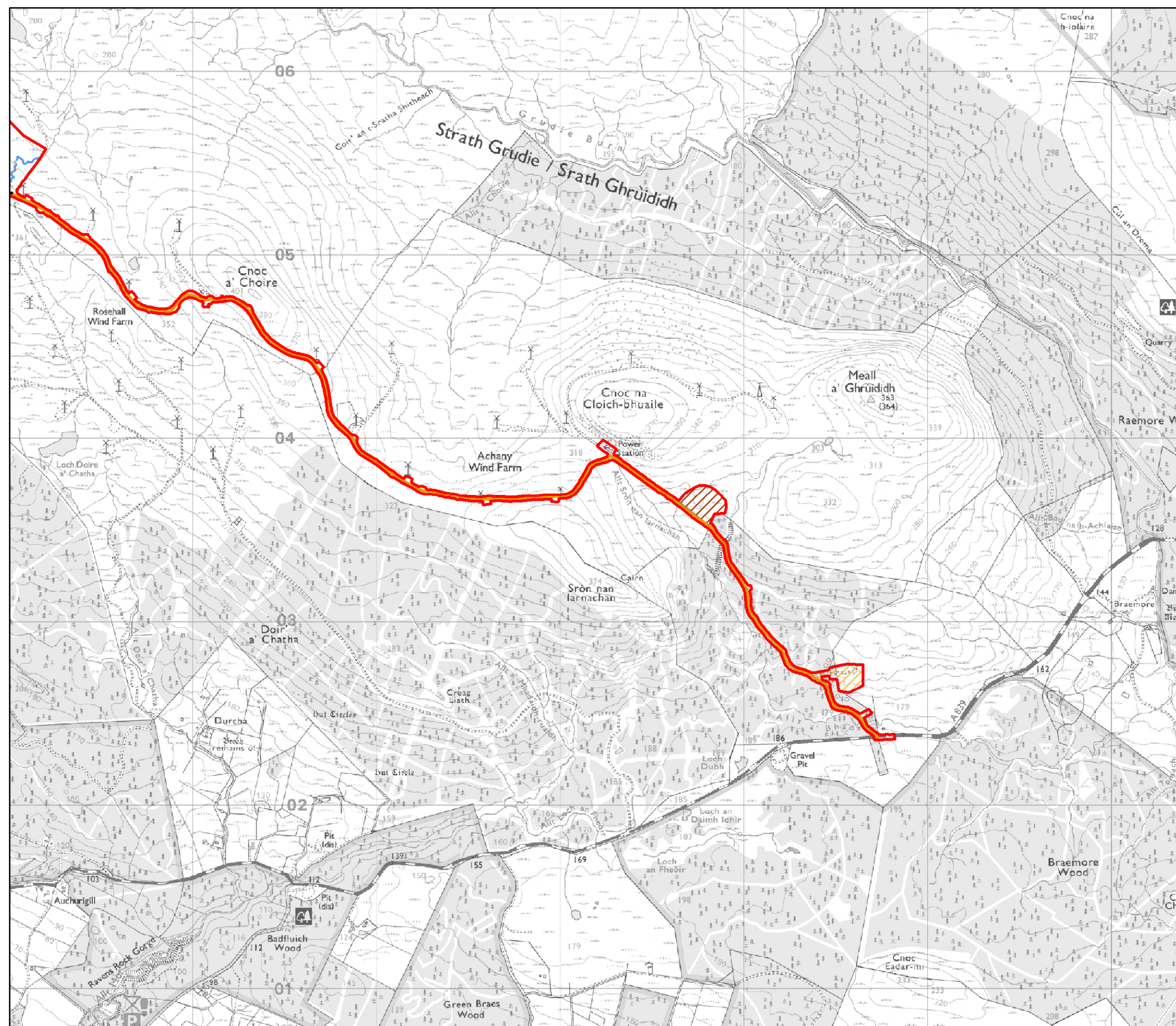
Figure 10.1.7b
Hydrological Assessment of GWDTE Potential

Achany Extension Wind Farm
EIA Report



Key

- Site Boundary
- Founded/Cut Track
- Existing Track to be Upgraded
- Extension to existing operations building
- Temp. Construction Compound, Security and Storage
- Borrow Pit Search Area
- Natural Watercourse



Scale 1:20,080 @ A3
0 0.2 0.4 Km



Figure 10.1.7c
Hydrological Assessment of GWDTE
Potential

Achany Extension Wind Farm
EIA Report