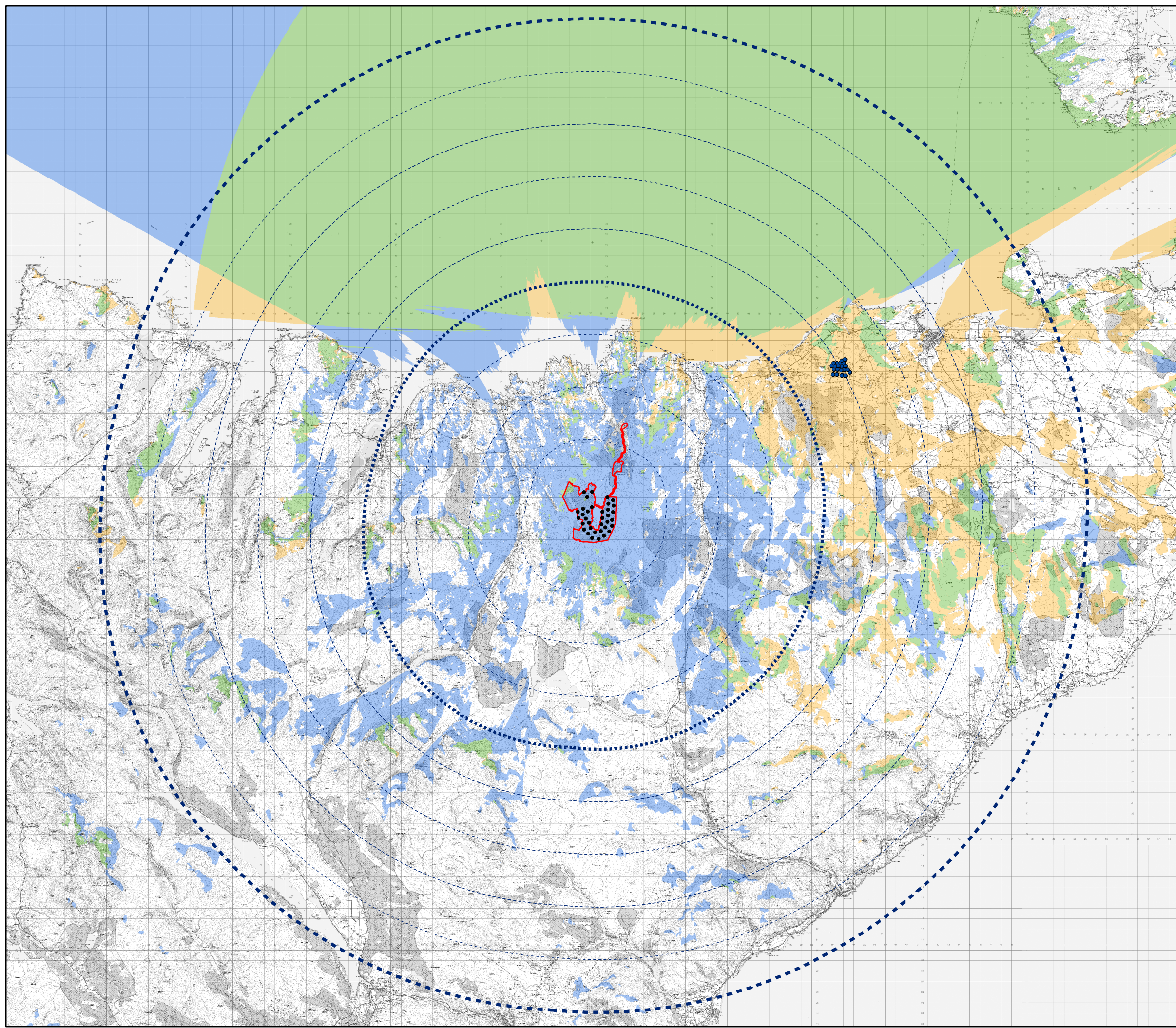
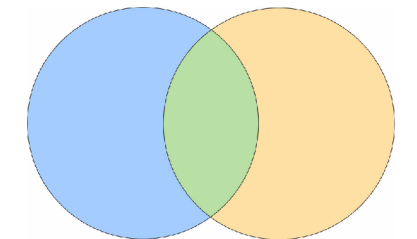


Key

- Site Boundary
- Proposed Turbine
- Baillie Wind Farm (Operational)
- 45 km Wider Study Area
- 20 km Detailed Study Area
- 5 km Distance Radii

Zone of Theoretical Visibility:
Wind Farm Development Theoretically Visible

Strathy South 35 Turbine
Proposed Varied Development Baillie Wind Farm



Scale 1:350,000@ A3



Figure 4.5c
Baillie Wind Farm Cumulative ZTV

Strathy South
Supplementary Information